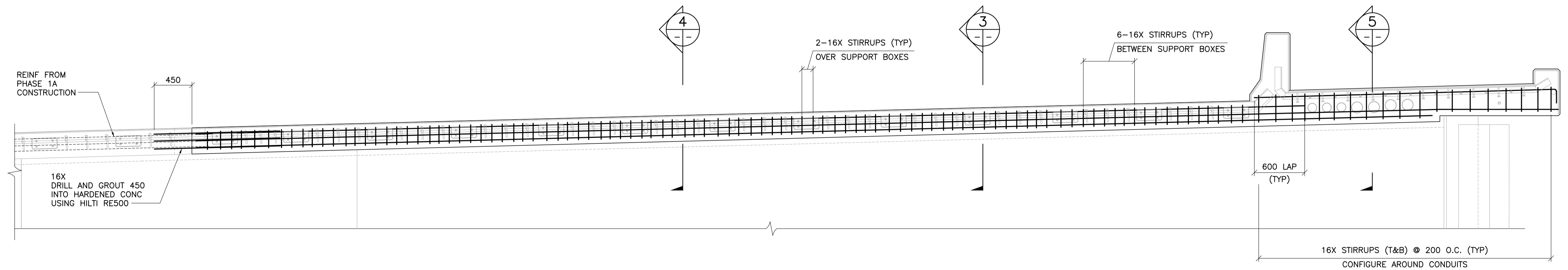
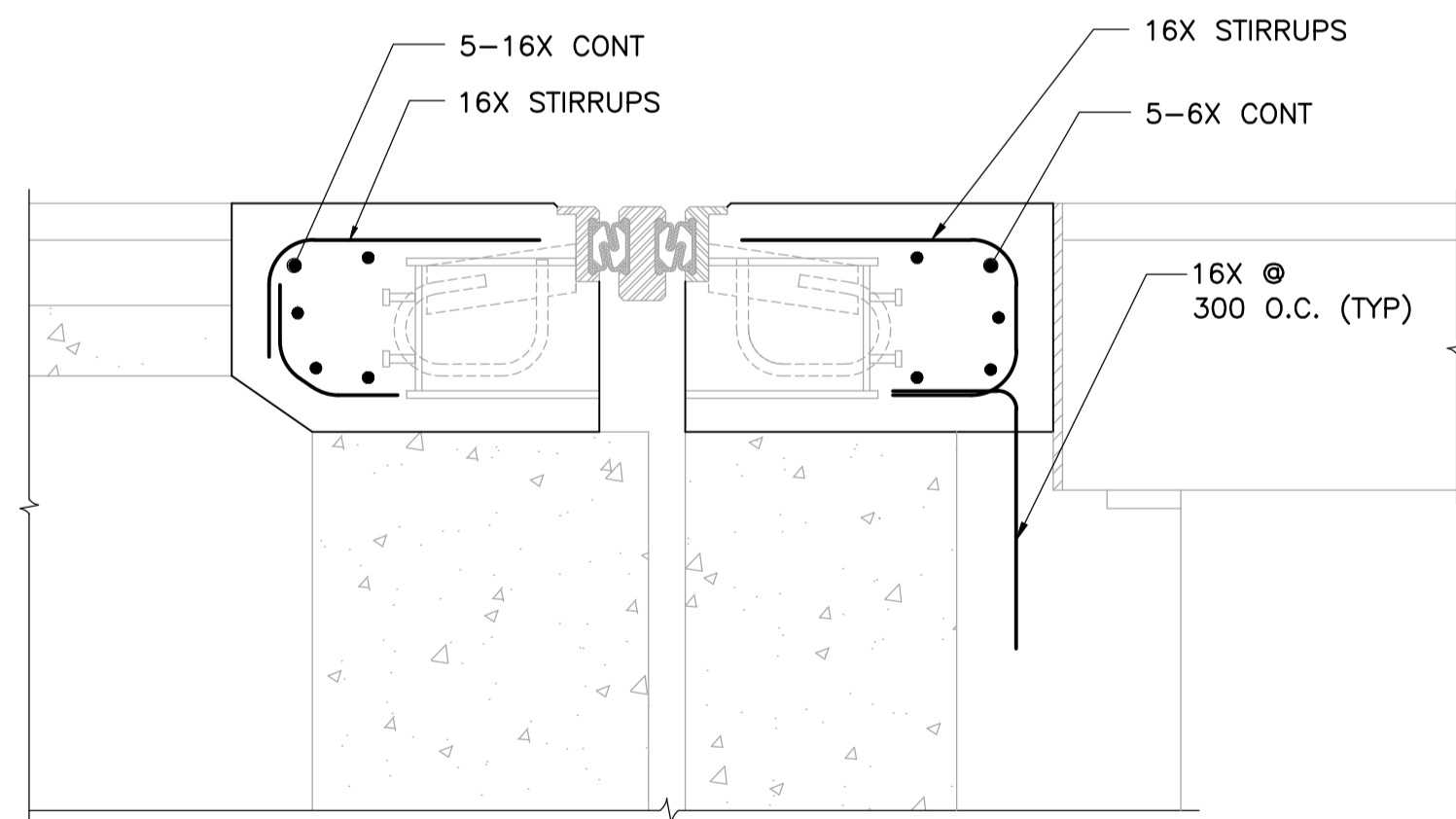


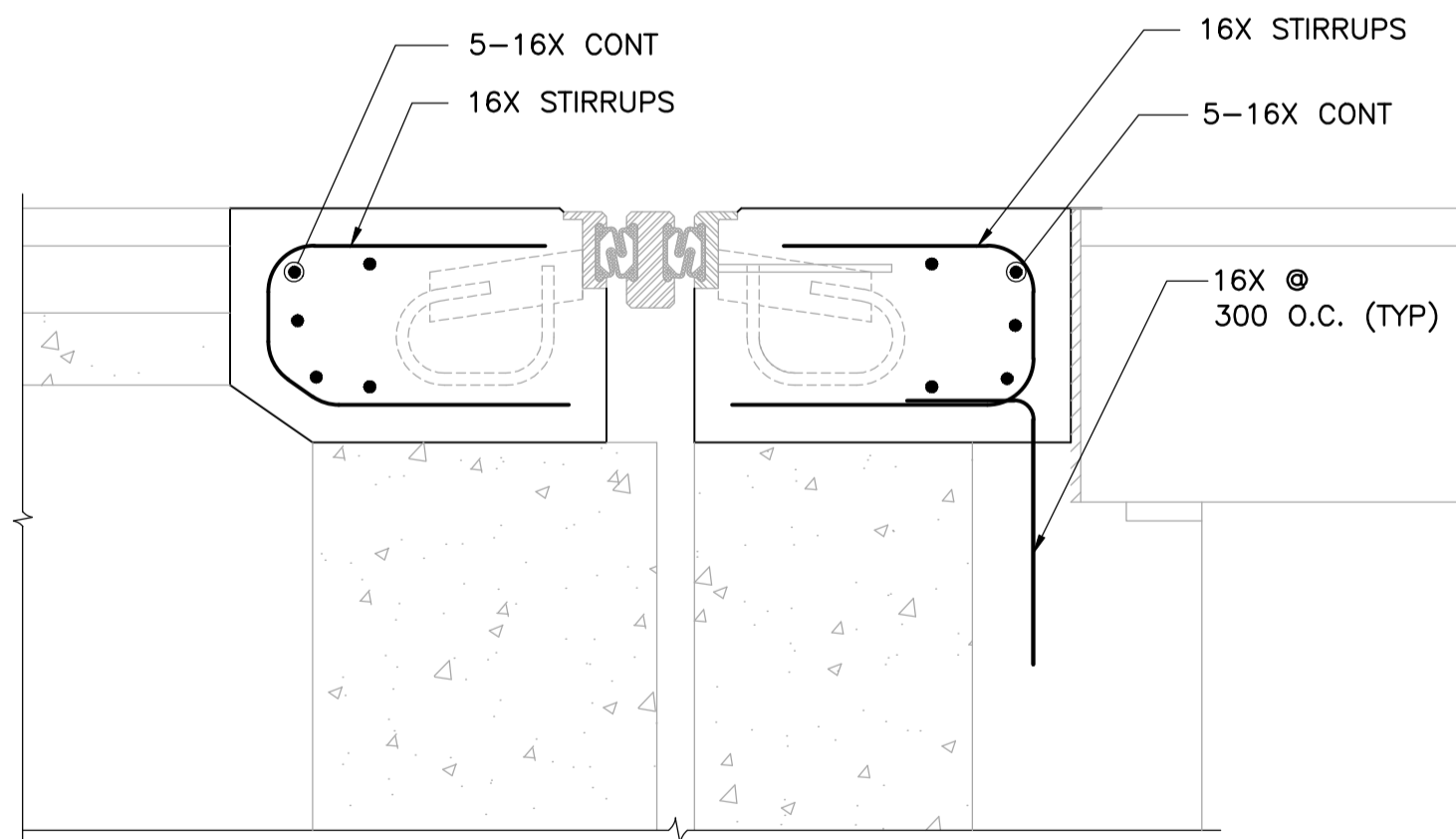
1 PLAN - EXPANSION JOINT AT SOUTH ABUTMENT - PHASE 2 REINFORCING
1 : 25



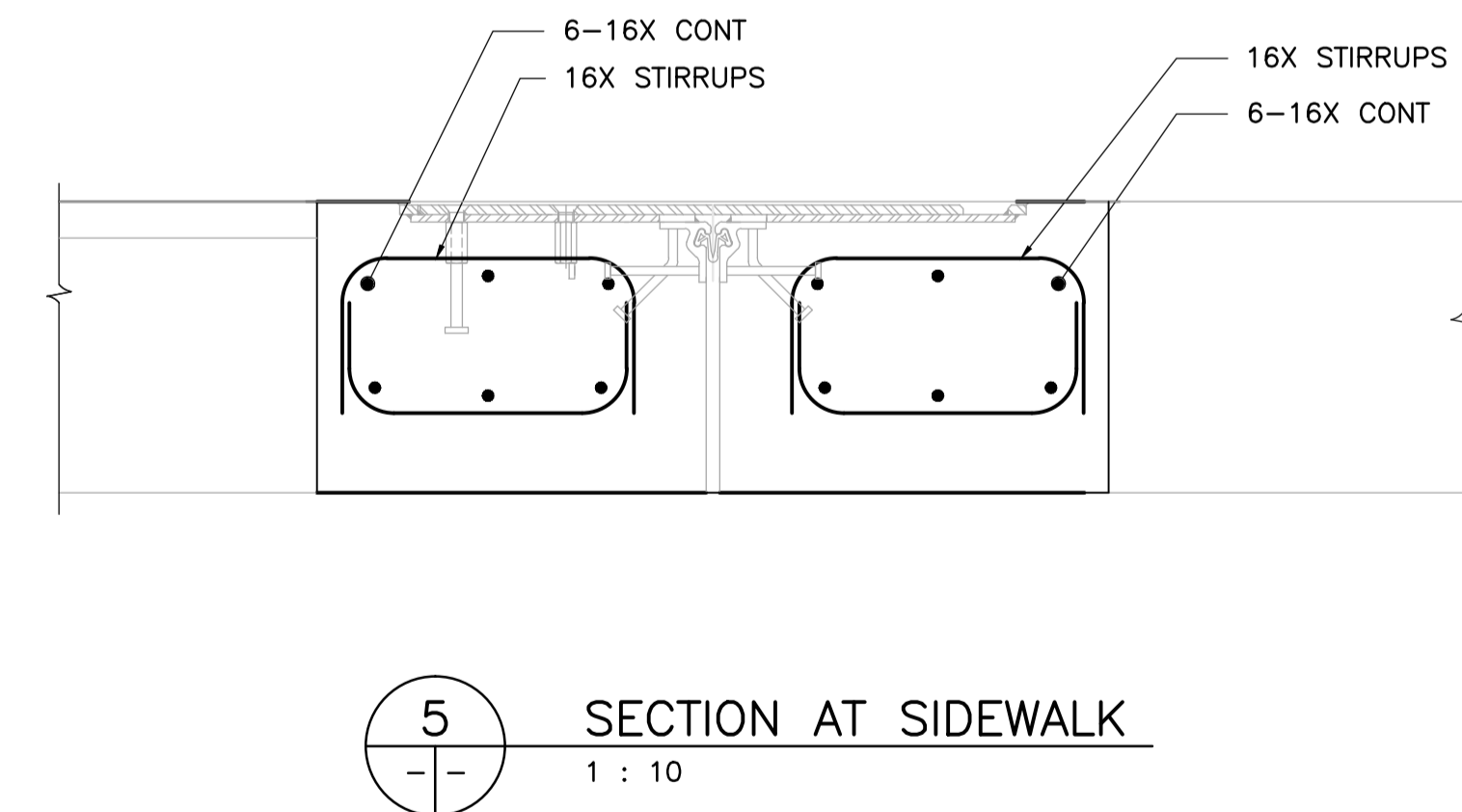
2 ELEVATION - EXPANSION JOINT AT SOUTH ABUTMENT - PHASE 2 REINFORCING
1 : 25



3 SECTION AT EXPANSION JOINT BOXES
1 : 10



4 SECTION BETWEEN EXPANSION JOINT BOXES
1 : 10



5 SECTION AT SIDEWALK
1 : 10



B.M. ELEV.	F.B.	WARDROP <small>ATETRA TECH COMPANY</small>		
		DESIGNED BY: K.Y.	CHECKED BY: V.B.	
		DRAWN BY: E.M.M.	APPROVED BY: R.H.W.	
		HOR. SCALE: AS NOTED	RELEASED FOR CONSTRUCTION DATE: 11.02.18	
			VERTICAL: AS NOTED	ORIGINAL SIGNED: 11.02.18
				CONSULTANT DRAWING NO. 0900070502-DWG-S0106
				MATT CRISLETT, P. ENG. BRIDGE PROJECTS ENGINEER
00	ISSUED FOR TENDER	11.02.18	VB	
	NO. REVISIONS	DATE	BY	
				DATE: 10.12.03



THE CITY OF WINNIPEG PUBLIC WORKS DEPARTMENT ENGINEERING DIVISION		CITY DRAWING NUMBER
OSBORNE STREET BRIDGE REHABILITATION & RELATED WORKS		B109-11-111
SOUTH EXPANSION JOINT PHASE 2 REINFORCING		SHEET 106 OF 131
		106