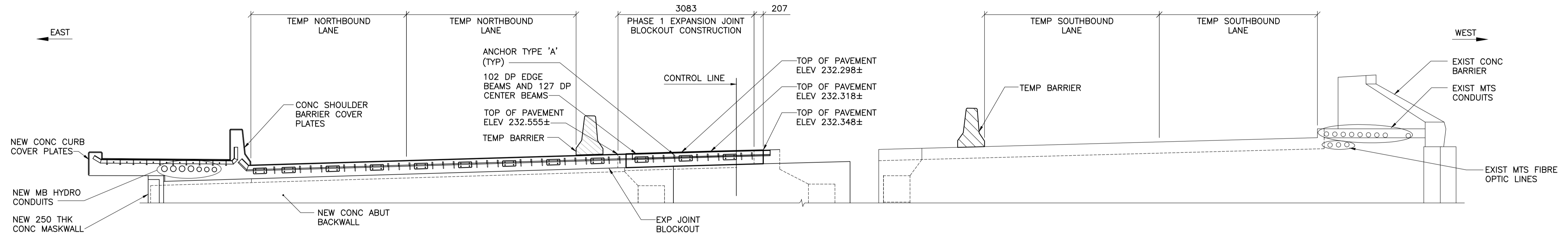
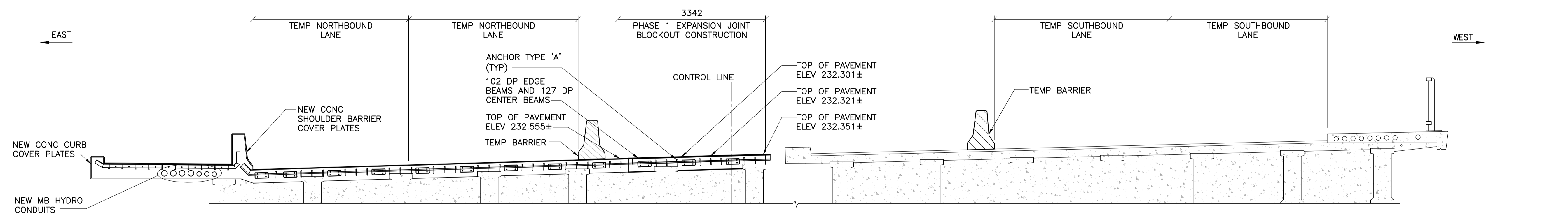


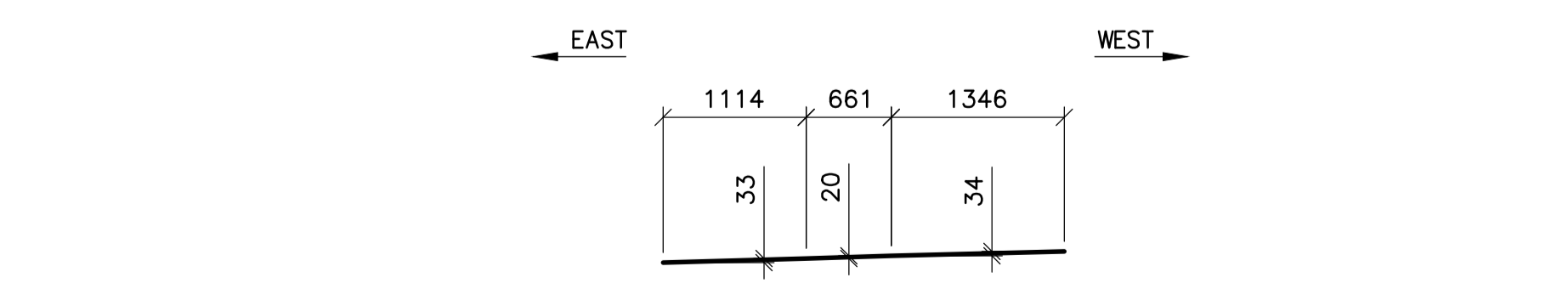
1 EXPANSION JOINT AT SOUTH ABUTMENT - PHASE 1A
1 : 50



2 ELEVATION - SOUTH ABUTMENT PHASE 1A CONSTRUCTION
1 : 50



3 ELEVATION - BRIDGE SECTION PHASE 1A
1 : 50



4 PROFILE DETAIL - EDGE AND CENTRE BEAMS - PHASE 1A
1 : 50

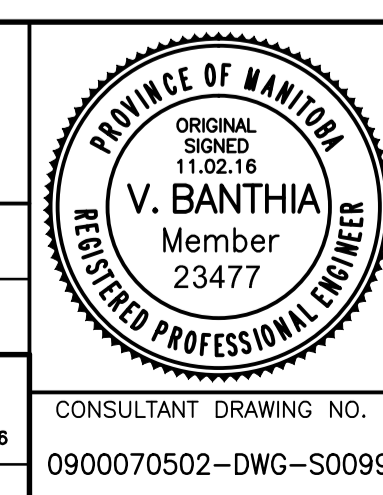


B.M. ELEV.	F.B.	DATE	BY
00	ISSUED FOR TENDER	11.02.18	VB
NO.	REVISIONS	DATE	BY
		10.12.03	

WARDROP
ATETRA TECH COMPANY

DESIGNED BY: K.Y.	CHECKED BY: V.B.
DRAWN BY: E.M.M.	APPROVED BY: R.H.W.
HOR. SCALE: AS NOTED	RELEASED FOR CONSTRUCTION DATE: 11.02.18
VERTICAL: AS NOTED	ORIGINAL SIGNED DATE: 11.02.18
DATE: 10.12.03	DATE: 10.12.03

MAIT OHSLETT, P.ENG
BRIDGE PROJECTS ENGINEER



THE CITY OF WINNIPEG
PUBLIC WORKS DEPARTMENT
ENGINEERING DIVISION

OSBORNE STREET BRIDGE
REHABILITATION & RELATED WORKS

SOUTH EXPANSION JOINT -
PHASE 1A CONSTRUCTION

CITY DRAWING NUMBER
B109-11-104
SHEET 99 OF 131

CONSULTANT DRAWING NO.
0900070502-DWG-S0099

99