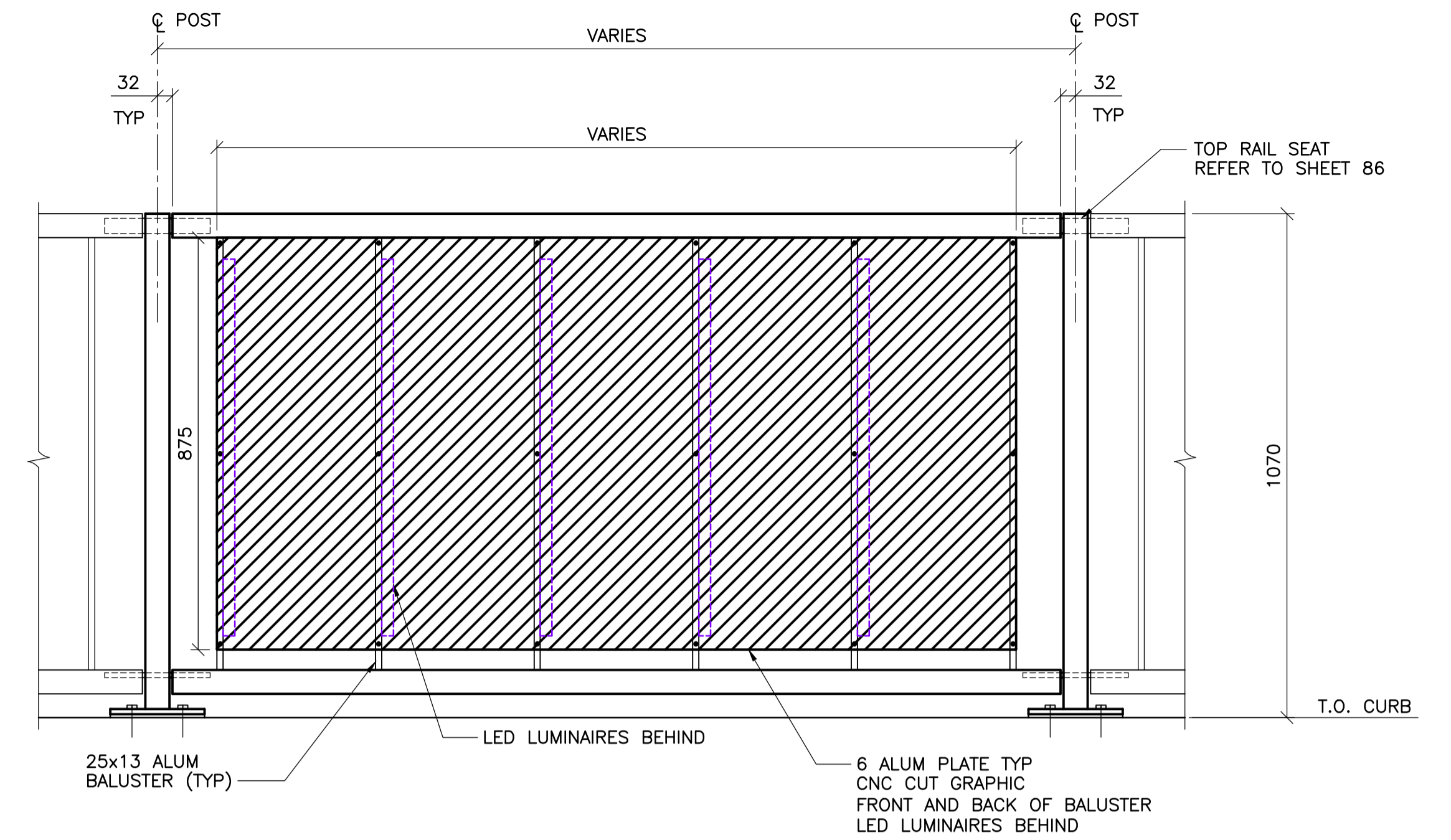
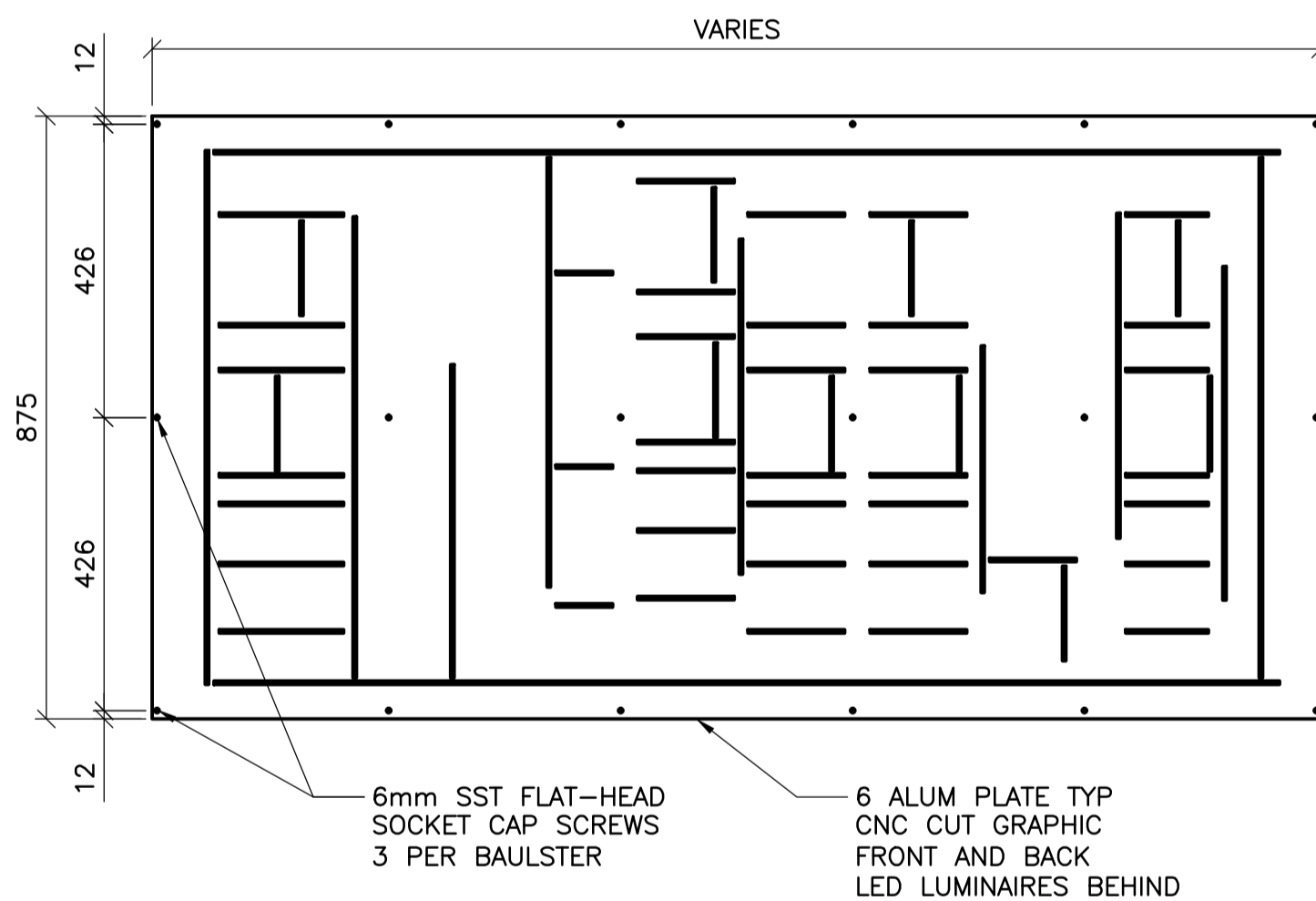


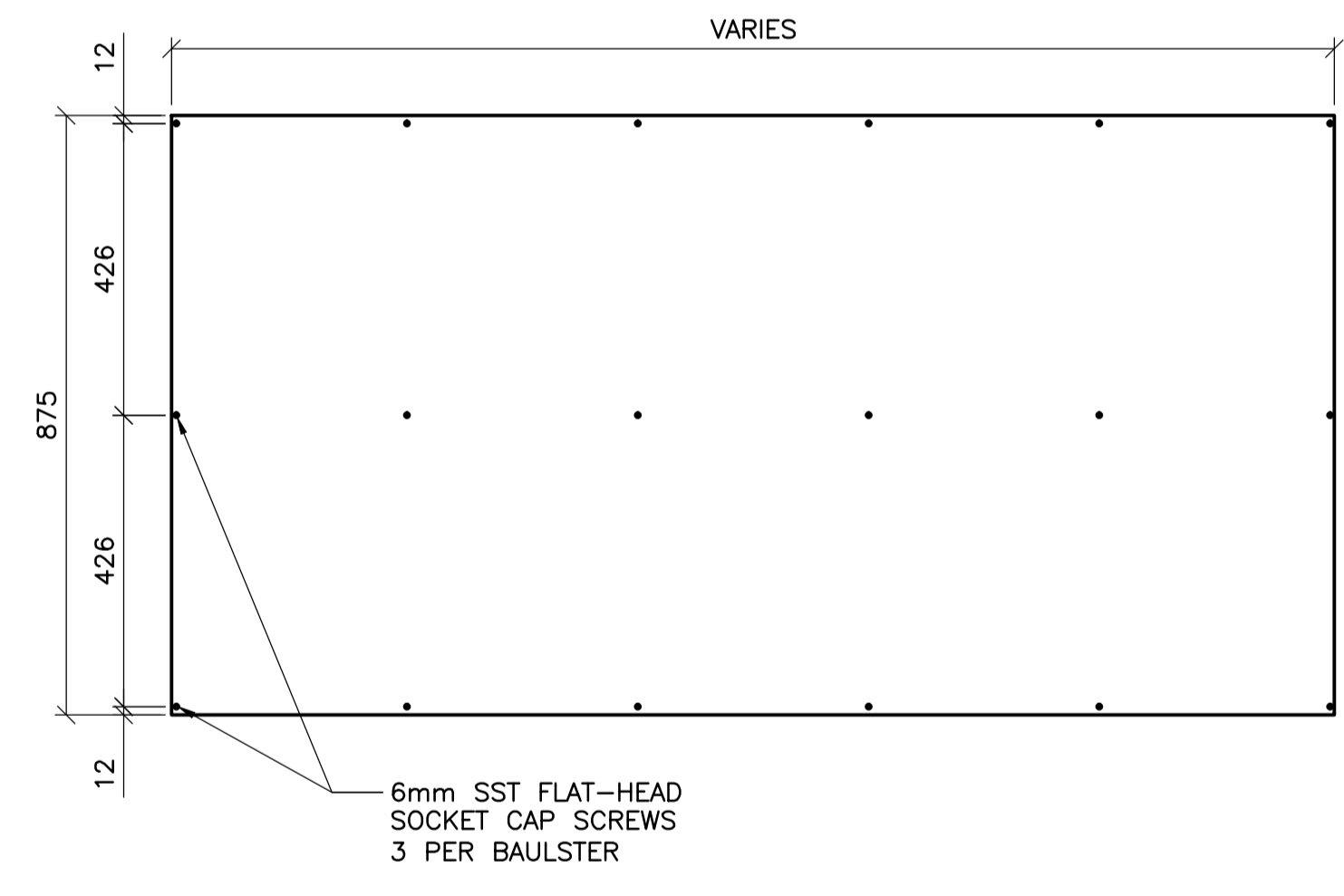
1 ELEVATION - ART GATEWAY PANEL - TYPICAL  
1 : 10



2 ELEVATION - ART GATEWAY PANEL - TYPICAL  
1 : 10



3 ELEVATION - ART GATEWAY PLATE - GRAPHIC EXAMPLE  
1 : 10  
- 14 ART GATEWAY GRAPHIC PLATES



4 ELEVATION - ART GATEWAY PLATE  
1 : 10  
- 2 ART GATEWAY PLATES RIVER SIDE AT SOUTHWEST CORNER ONLY

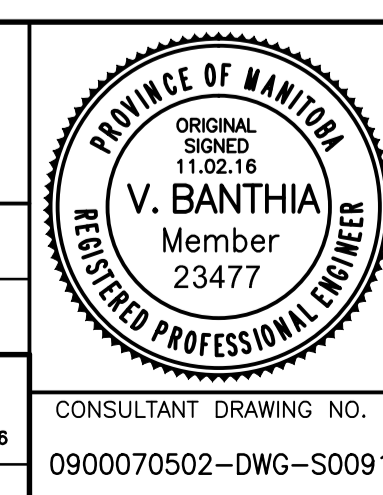
**NOTES:**

1. ALUMINUM EXTRUSIONS SHALL CONFORM TO ASTM B221 ALLOY 6351-T6. ALUMINUM PLATES SHALL CONFORM TO ASTM B221 ALLOY 5083.
2. THE M.J.G. PROCESS OF WELDING SHALL BE USED.
3. SST DENOTES STAINLESS STEEL.
4. RAIL POSTS AND BALUSTERS SHALL BE SET VERTICAL.
5. PLACE NEOPRENE PAD UNDER EACH POST BETWEEN BASE PLATE/ OR SHIM AND CONCRETE SURFACE. ALUMINUM SHIMS MAY BE REQUIRED FOR VERTICAL ALIGNMENT.
6. HANDRAIL ANCHOR INSERTS SHALL BE ACROW-RICHMOND TYPE DGRS-1.
7. NUMBER OF ART GATEWAYS = 8.
8. THE BACK OF PANELS FOR THE ALUMINUM ART GATEWAY PANELS SHALL NOT BE CUT FOR THE TWO PANELS AT THE SOUTHWEST CORNER OF THE BRIDGE TO PREVENT ANY LIGHT FROM PASSING THROUGH THE RIVER SIDE OF THE PANEL.
9. GRAPHIC FOR EACH (8) ART GATEWAY AS PER TABLE E24.1 IN THE SPECIFICATIONS



B.M. ELEV.	F.B.	DATE	BY
00	ISSUED FOR TENDER	11.02.18	VB
NO.	REVISIONS	DATE	BY

<b>WARDROP</b> ATETRA TECH COMPANY	
DESIGNED BY V.B.	CHECKED BY V.B.
DRAWN BY E.M.M./G.I.	APPROVED BY R.H.W.
HOR. SCALE: AS NOTED	RELEASED FOR CONSTRUCTION DATE 11.02.18
VERTICAL: AS NOTED	ORIGINAL SIGNED 11.02.18
DATE 10.12.03	DATE 10.12.03



<b>THE CITY OF WINNIPEG</b> PUBLIC WORKS DEPARTMENT ENGINEERING DIVISION	
OSBORNE STREET BRIDGE REHABILITATION & RELATED WORKS	CITY DRAWING NUMBER B109-11-096 SHEET 91 OF 131
ALUMINUM PEDESTRIAN HANDRAIL ART DETAILS	91