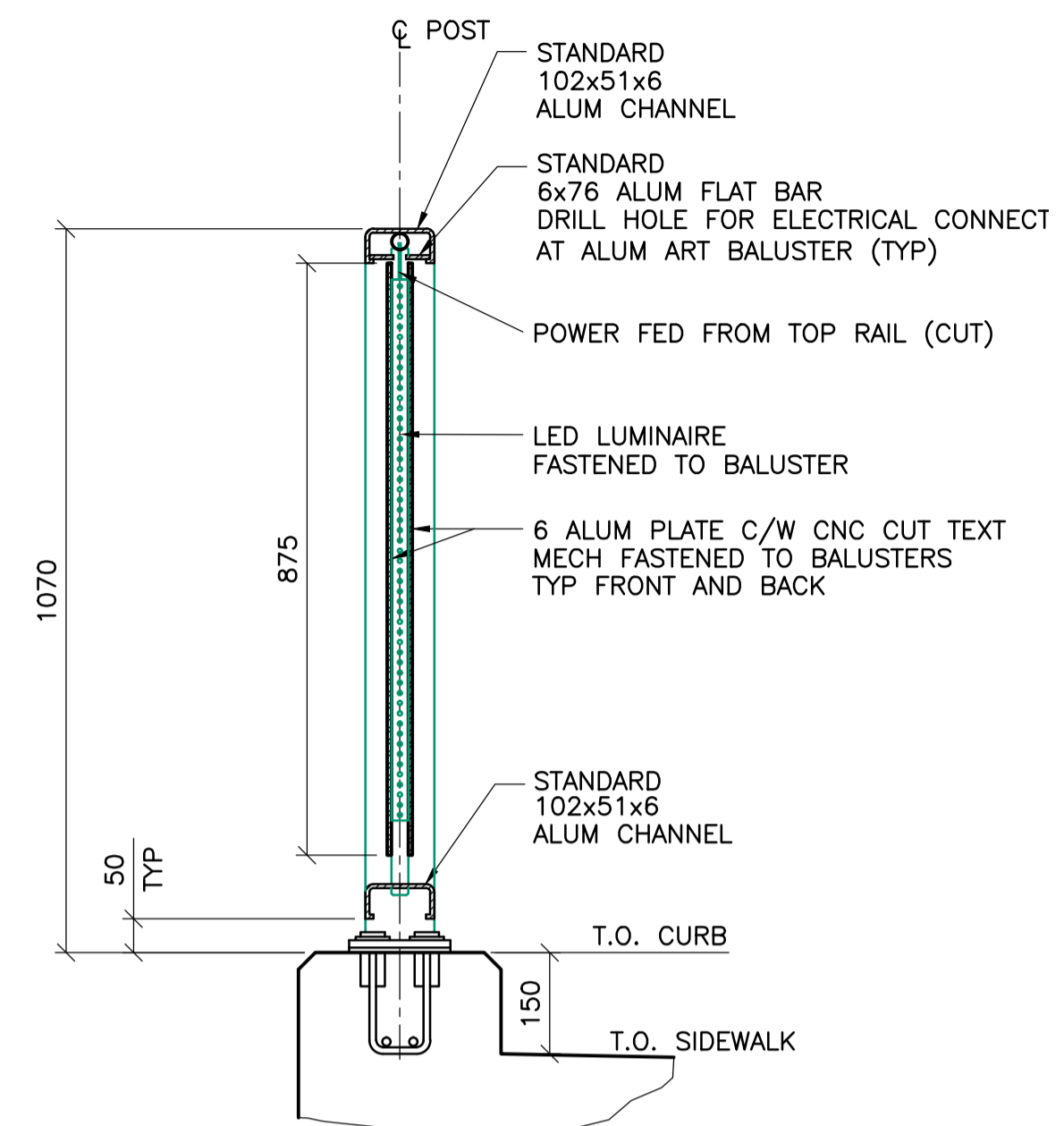
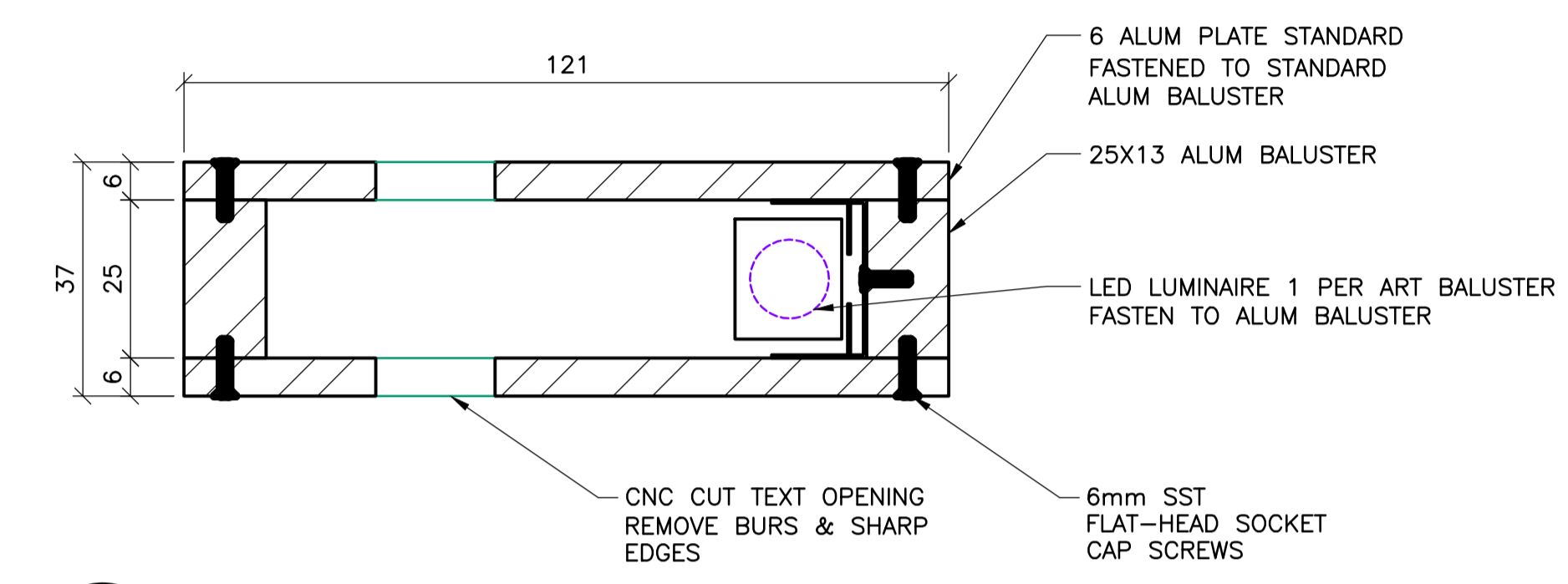


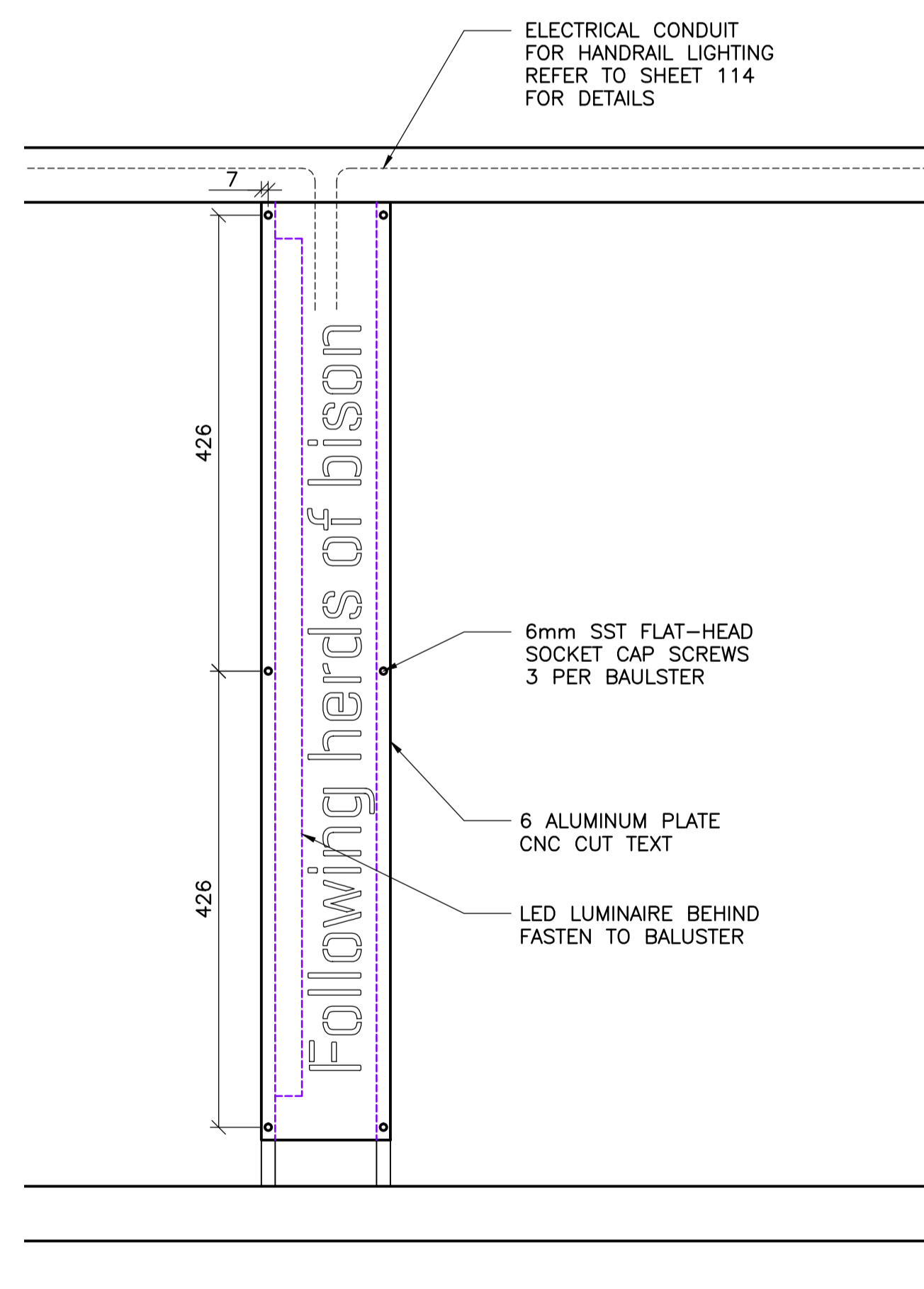
1 ELEVATION - INTERMEDIATE PANEL Mk. 'A' - ART BALUSTER (TYP)
1 : 10



2 SECTION
1 : 10



3 PLAN - ART BALUSTER - TYPICAL
1 : 1



4 ELEVATION - ART BALUSTER
1 : 5

NOTES:

1. ALUMINUM EXTRUSIONS SHALL CONFORM TO ASTM B221 ALLOY 6351-T6. ALUMINUM PLATES SHALL CONFORM TO ASTM B221 ALLOY 5083.
2. SST DENOTES STAINLESS STEEL.
3. PROVIDE HOLES IN THE SIDE OF EACH POST TO ACCOMMODATE ELECTRICAL CONNECTIONS AT ALUMINUM ART BALUSTERS
4. LOCATION OF ART BALUSTER VARIES PER Mk.A PANEL
5. NUMBER OF ART BALUSTER VARIES PER Mk.A PANEL
6. TOTAL NUMBER OF ART BALUSTERS = 100 50 PER SIDE
7. FONT TO BE USED FOR CNC TEXT = GEOGROTESQUE STENCIL TEXT UPPER AND LOWER CASE.
8. REFER TO ALUMINUM PEDESTRIAN HANDRAIL DRAWINGS ON SHEETS 84 TO 87.

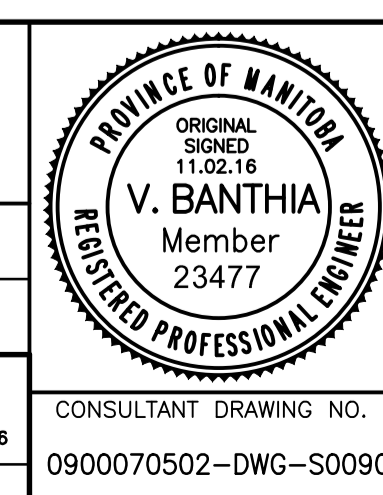


B.M. ELEV.	F.B.	DATE	BY
00	ISSUED FOR TENDER	11.02.18	VB
	REVISIONS	DATE	BY
		10.12.03	

WARDROP
ATETRA TECH COMPANY

DESIGNED BY V.B.	CHECKED BY V.B.
DRAWN BY E.M.M./G.I.	APPROVED BY R.H.W.
HOR. SCALE: AS NOTED	RELEASED FOR CONSTRUCTION DATE 11.02.18
VERTICAL: AS NOTED	ORIGINAL SIGNED

MAIT OHSLETT, P. ENG. BRIDGE PROJECTS ENGINEER



THE CITY OF WINNIPEG
PUBLIC WORKS DEPARTMENT
ENGINEERING DIVISION

OSBORNE STREET BRIDGE
REHABILITATION & RELATED WORKS

ALUMINUM PEDESTRIAN HANDRAIL
ART LAYOUT

CITY DRAWING NUMBER
B109-11-095
SHEET OF
90 131

CONSULTANT DRAWING NO.
0900070502-DWG-S0090

90