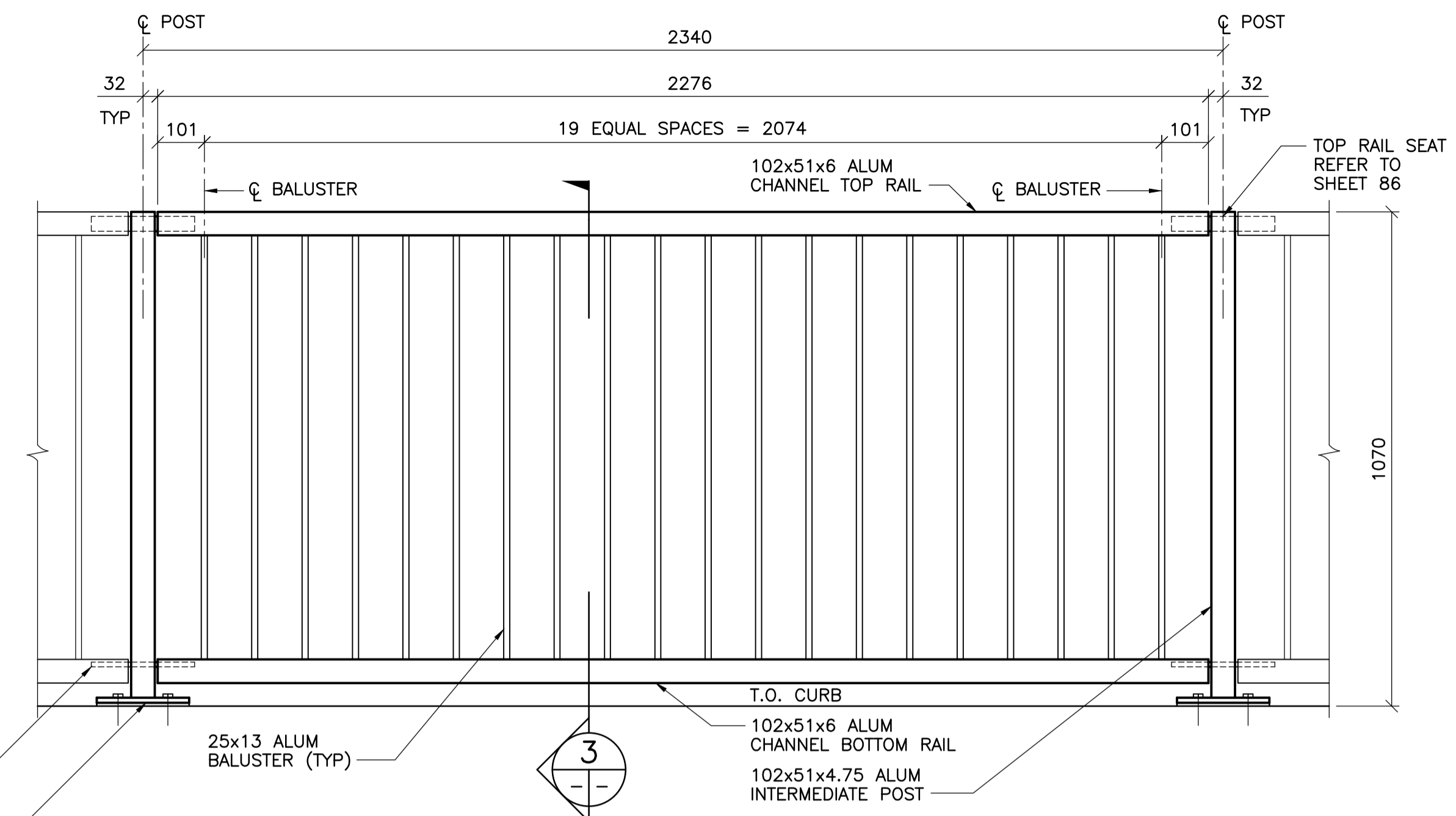
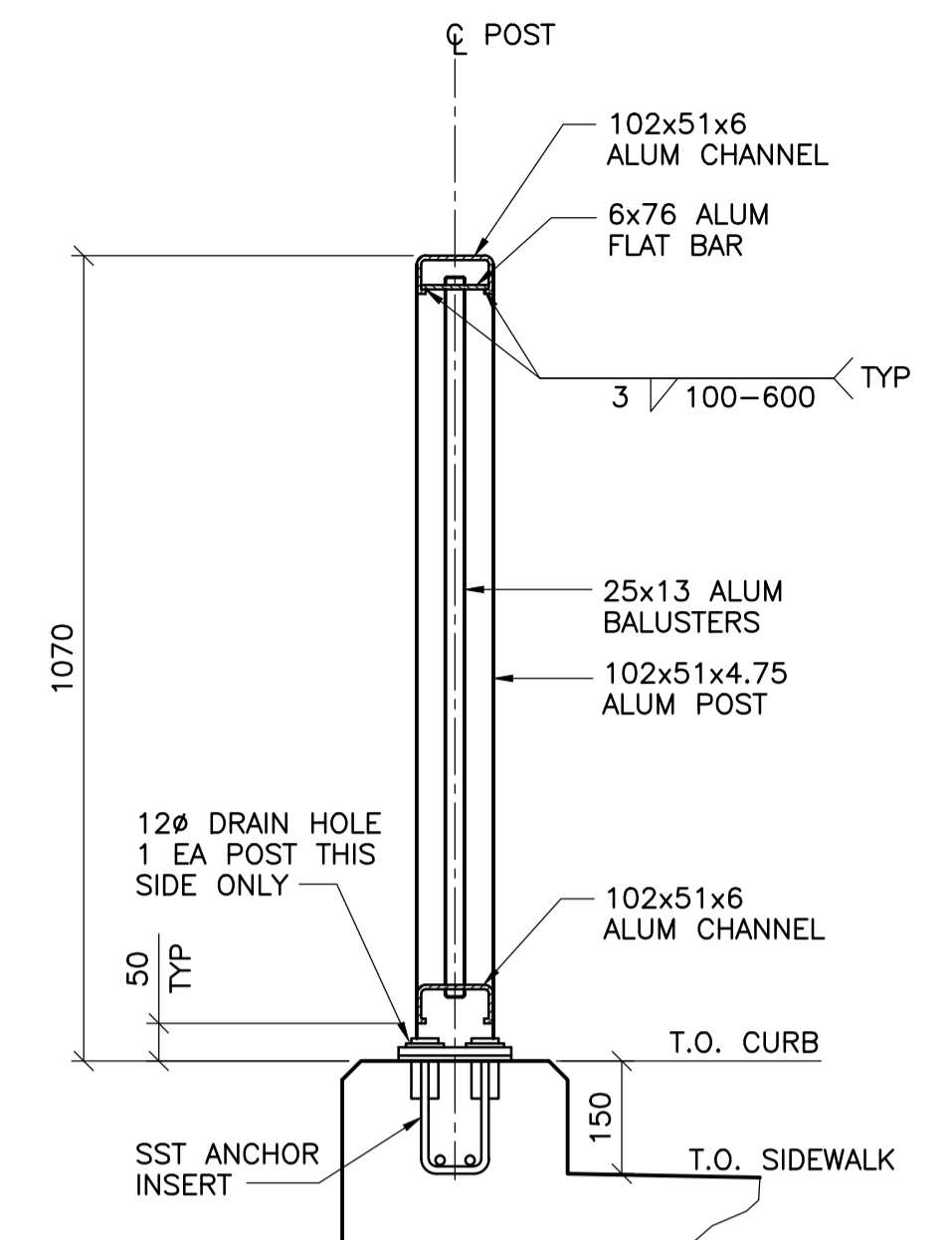


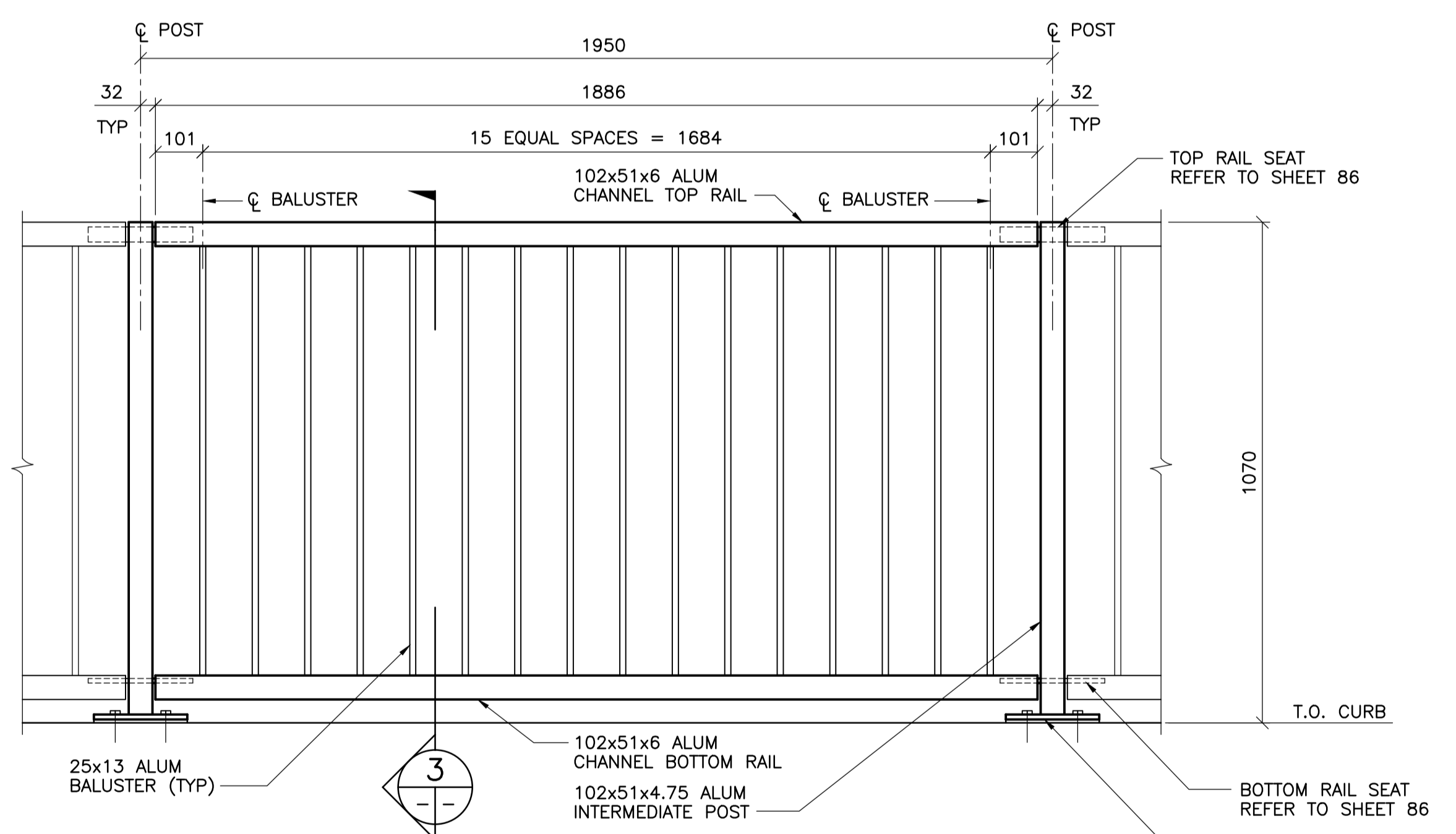
**1** ELEVATION - INTERMEDIATE PANEL Mk. 'A'  
 1 : 10  
 - 4 INTERMEDIATE PANELS Mk. 'A' TO HAVE ART GATEWAY PANEL  
 REFER TO SHEET 89 FOR DETAILS.



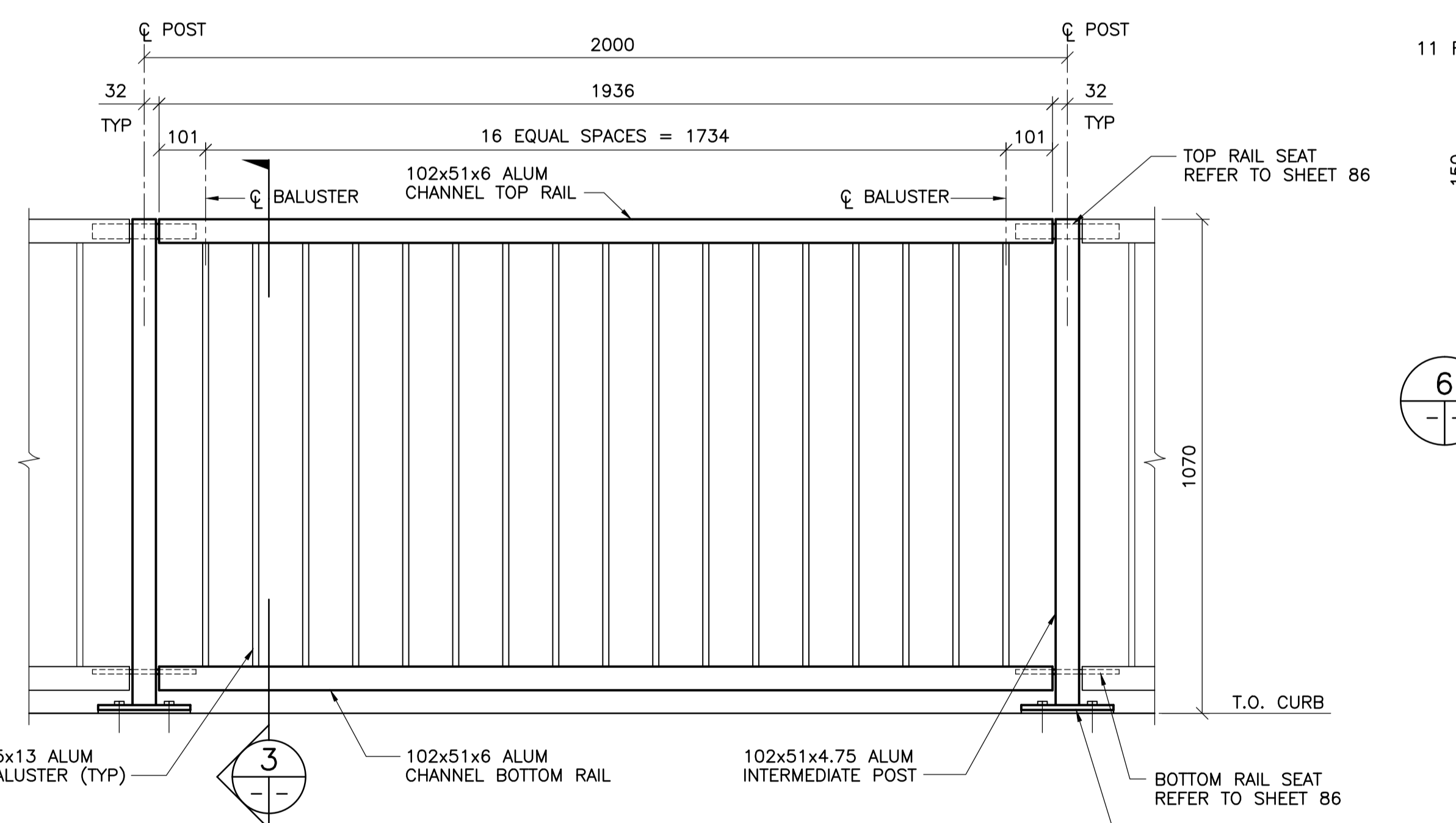
**2** ELEVATION - INTERMEDIATE PANEL Mk. 'C'  
 1 : 10  
 - 2 INTERMEDIATE PANELS Mk. 'C' TO HAVE ART GATEWAY PANEL  
 REFER TO SHEET 89 FOR DETAILS.



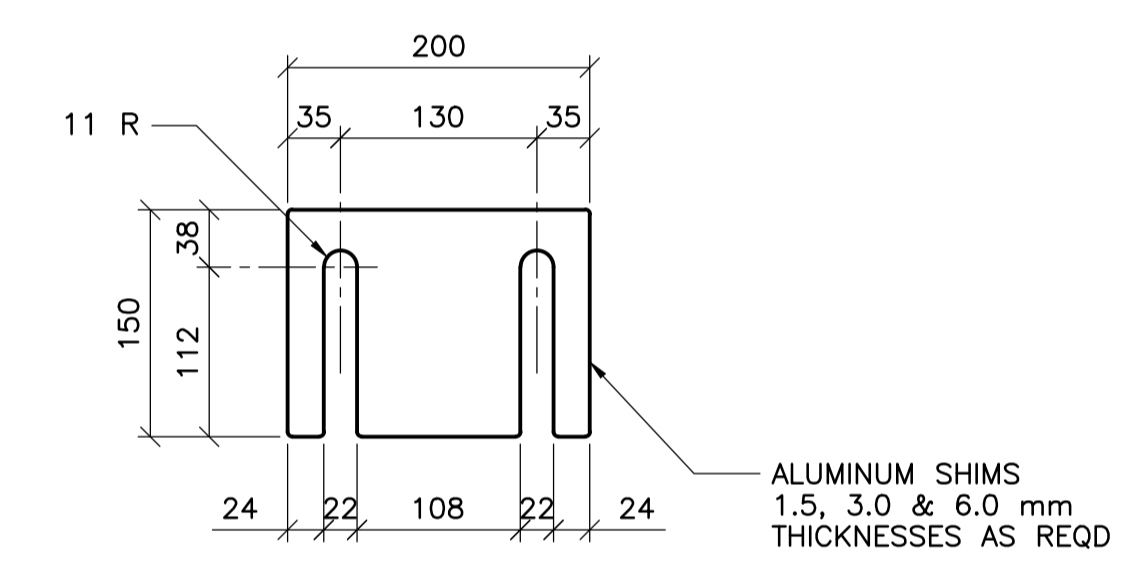
**3** SECTION  
 1 : 10



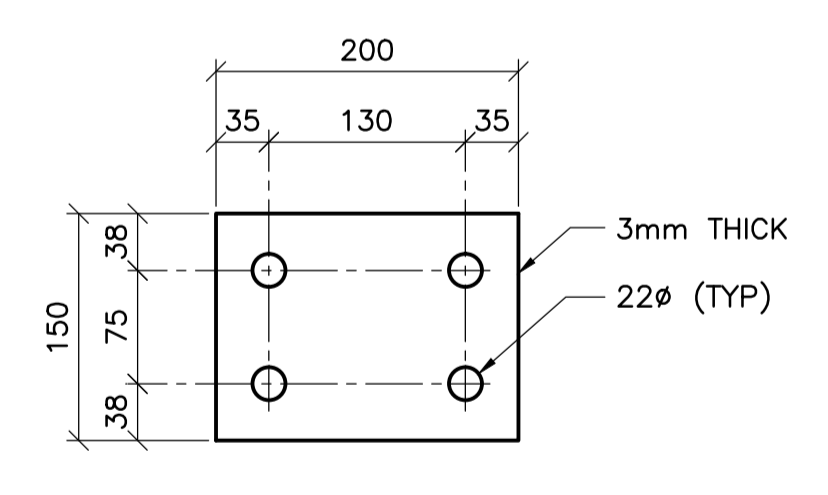
**4** ELEVATION - INTERMEDIATE PANEL Mk. 'D'  
 1 : 10  
 - 2 INTERMEDIATE PANELS Mk. 'D' TO HAVE ART GATEWAY PANEL  
 REFER TO SHEET 89 FOR DETAILS.



**5** ELEVATION - INTERMEDIATE PANEL Mk. 'E'  
 1 : 10



**6** SHIM DETAIL  
 1 : 5  
 - TYP AT ALL INTERMEDIATE POST



**7** NEOPRENE PAD DETAIL  
 1 : 5  
 - TYP AT ALL INTERMEDIATE POST

- NOTES:**
- ALUMINUM EXTRUSIONS SHALL CONFORM TO ASTM B221 ALLOY 6351-T6. ALUMINUM PLATES SHALL CONFORM TO ASTM B221 ALLOY 5083.
  - THE M.I.G. PROCESS OF WELDING SHALL BE USED.
  - SST DENOTES STAINLESS STEEL.
  - RAIL POSTS AND BALUSTERS SHALL BE SET VERTICAL. PLACE NEOPRENE PAD UNDER EACH POST BETWEEN BASE PLATE / OR SHIM AND CONC SURFACE.
  - ALUMINUM SHIMS MAY BE REQUIRED FOR VERTICAL ALIGNMENT.
  - HANDRAIL ANCHOR INSERTS SHALL BE ACROW-RICHMOND TYPE DGRS-1.

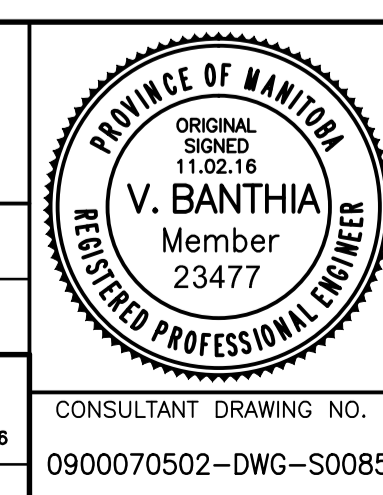


B.M. ELEV.	F.B.	DATE	BY
00	ISSUED FOR TENDER	11.02.18	VB
	NO. REVISIONS	DATE	BY
		10.12.03	

**WARDROP**  
 ATETRA TECH COMPANY

DESIGNED BY V.B.	CHECKED BY V.B.
DRAWN BY E.M.M./G.I.	APPROVED BY R.H.W.
HOR. SCALE: AS NOTED	RELEASED FOR CONSTRUCTION DATE 11.02.18
VERTICAL: AS NOTED	ORIGINAL SIGNED DATE 11.02.18
DATE 10.12.03	DATE 10.12.03

MAIT OHSLETT, P.ENG. BRIDGE PROJECTS ENGINEER



**THE CITY OF WINNIPEG**  
 PUBLIC WORKS DEPARTMENT  
 ENGINEERING DIVISION

**OSBORNE STREET BRIDGE**  
 REHABILITATION & RELATED WORKS

ALUMINUM PEDESTRIAN HANDRAIL  
 ELEVATIONS, SECTIONS AND DETAILS

CITY DRAWING NUMBER  
**B109-11-090**  
 SHEET OF  
**85** OF **131**

CONSULTANT DRAWING NO.  
 0900070502-DWG-S0085

**85**