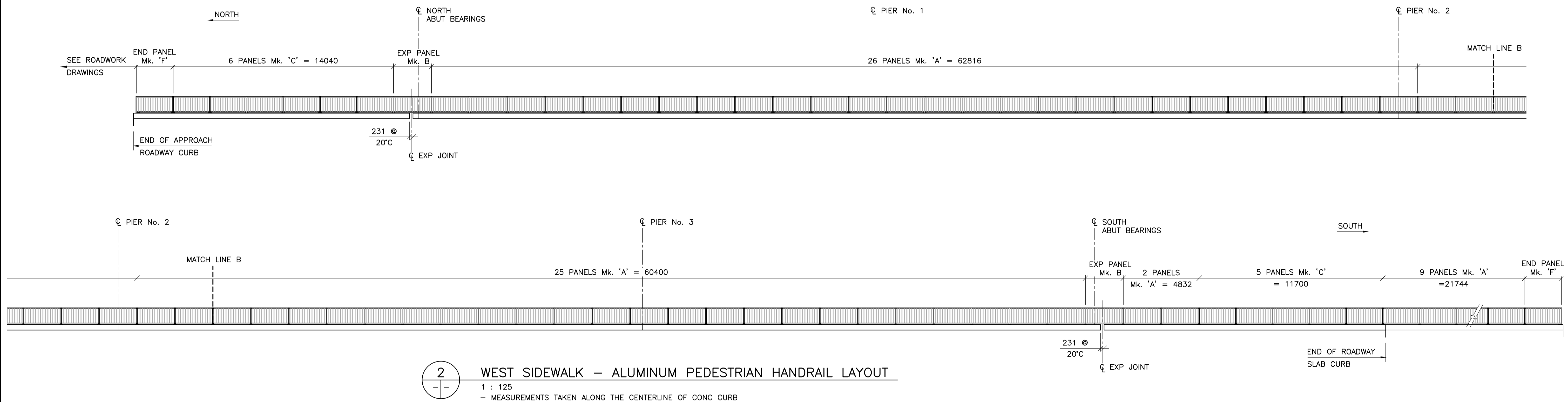


1 EAST SIDEWALK - ALUMINUM PEDESTRIAN HANDRAIL LAYOUT
 1 : 125
 - MEASUREMENTS TAKEN ALONG THE CENTERLINE OF CONC CURB



2 WEST SIDEWALK - ALUMINUM PEDESTRIAN HANDRAIL LAYOUT
 1 : 125
 - MEASUREMENTS TAKEN ALONG THE CENTERLINE OF CONC CURB

ALUMINUM PEDESTRIAN HANDRAIL/BICYCLE RAIL PANEL DATA			
PANEL	No. REQ'D	POST SPACING	REMARKS
A	115	2416	INTERMEDIATE PANEL
B	4	2416	EXPANSION PANEL
C	13	2340	INTERMEDIATE PANEL
D	5	1950	INTERMEDIATE PANEL
E	2	2000	INTERMEDIATE PANEL
F	4	2340	END PANEL
TOTAL = 143 PANELS			



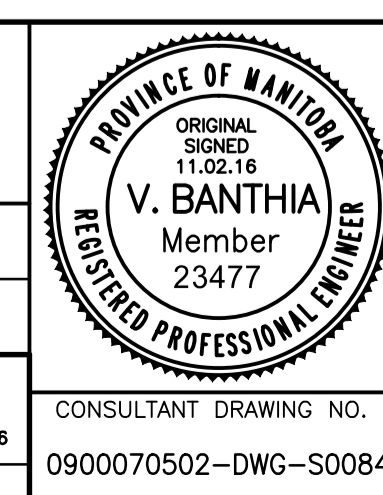
B.M. ELEV.	F.B.	DATE	BY
		11.02.18	VB
		10.12.03	

WARDROP
 ATETRA TECH COMPANY

DESIGNED BY: V.B. CHECKED BY: V.B.
 DRAWN BY: E.M.M./G.I. APPROVED BY: R.H.W.

HOR. SCALE: AS NOTED DATE: 11.02.18
 VERTICAL: ORIGINAL SIGNED

00 ISSUED FOR TENDER 11.02.18 VB
 NO. REVISIONS DATE BY



THE CITY OF WINNIPEG
 PUBLIC WORKS DEPARTMENT
 ENGINEERING DIVISION

OSBORNE STREET BRIDGE
 REHABILITATION & RELATED WORKS

ALUMINUM PEDESTRIAN HANDRAIL LAYOUT

CITY DRAWING NUMBER: B109-11-089
 SHEET 84 OF 131

CONSULTANT DRAWING NO.: 0900070502-DWG-S0084

84