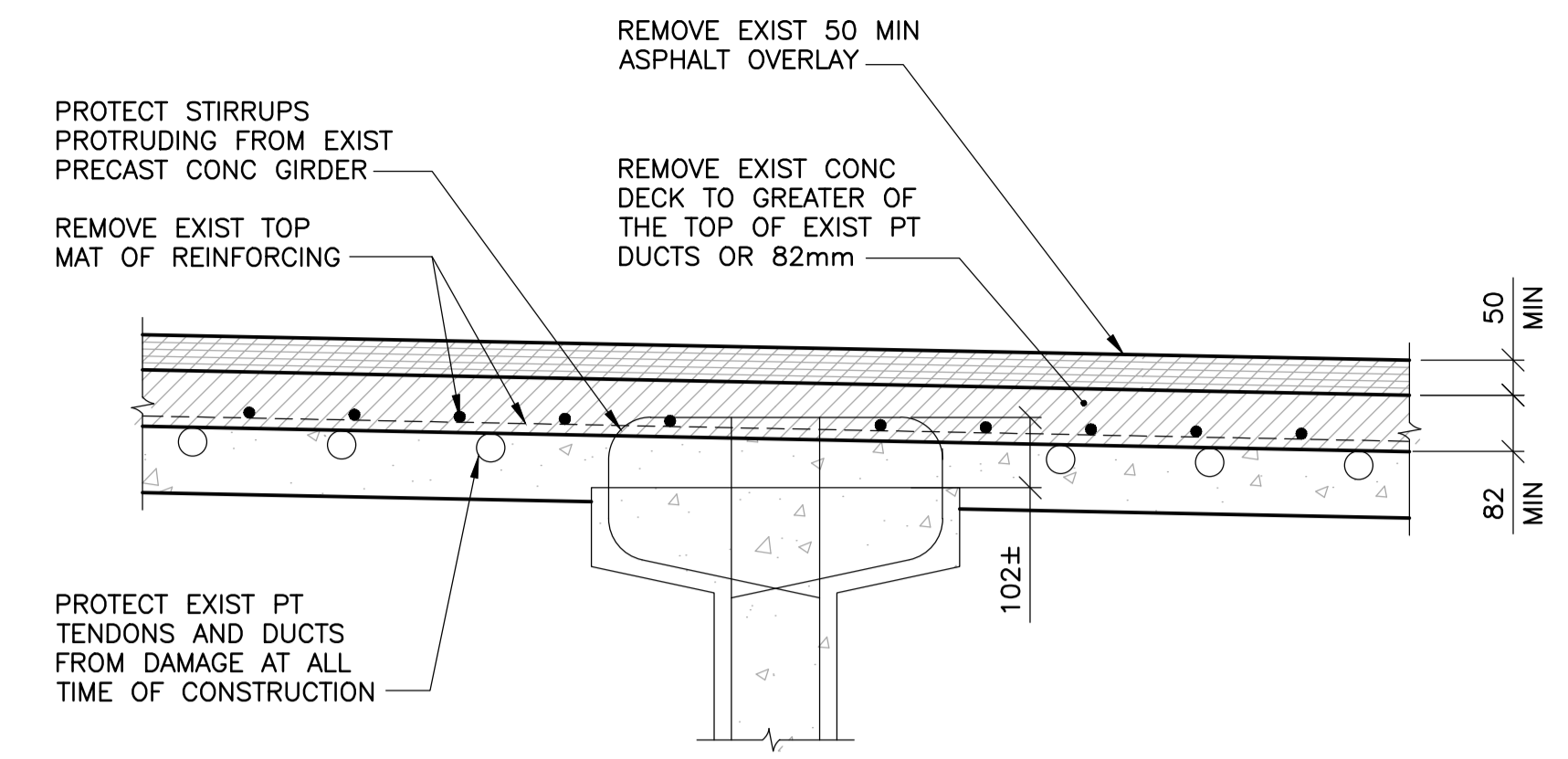
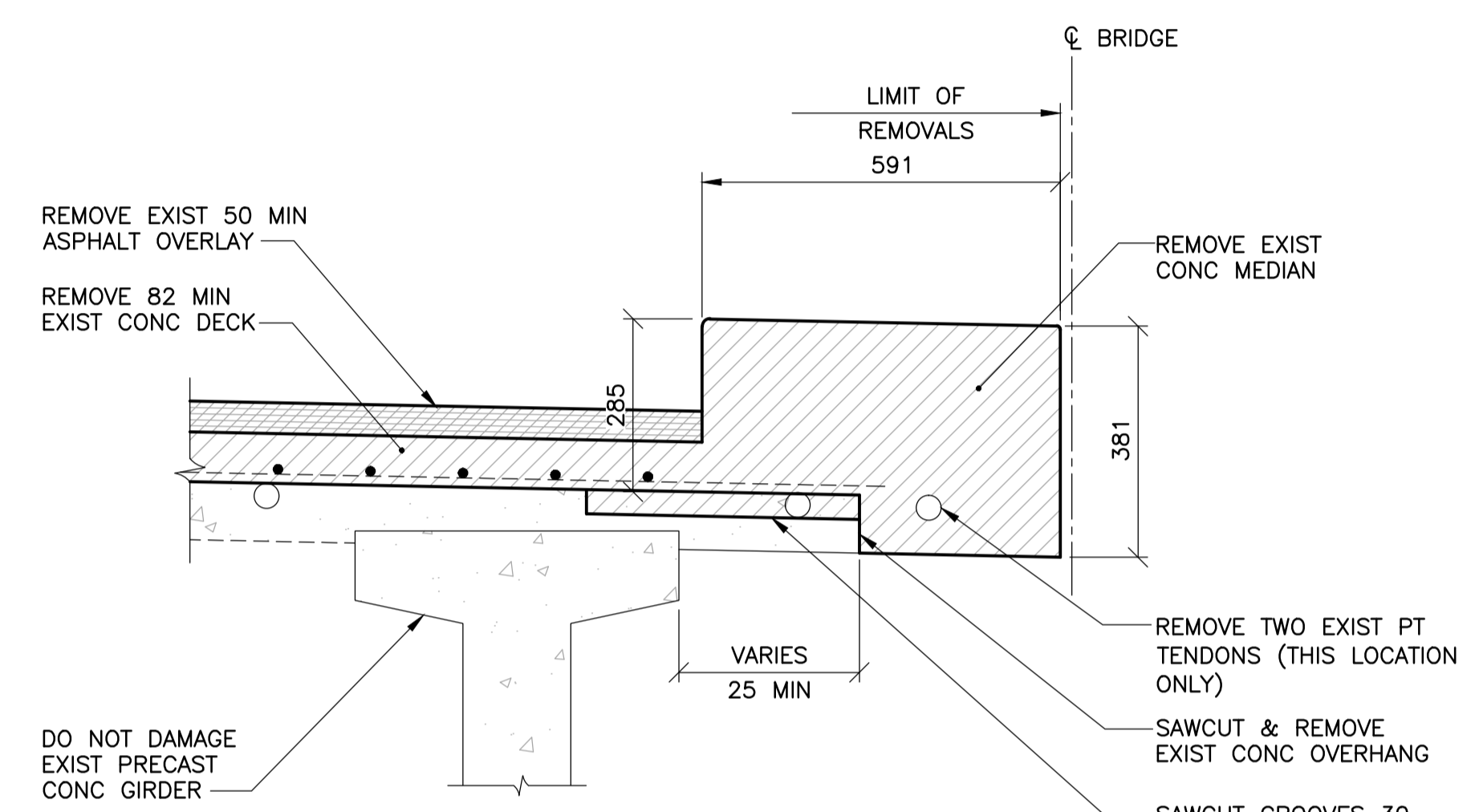


1 DETAIL
68 | 69 1 : 10

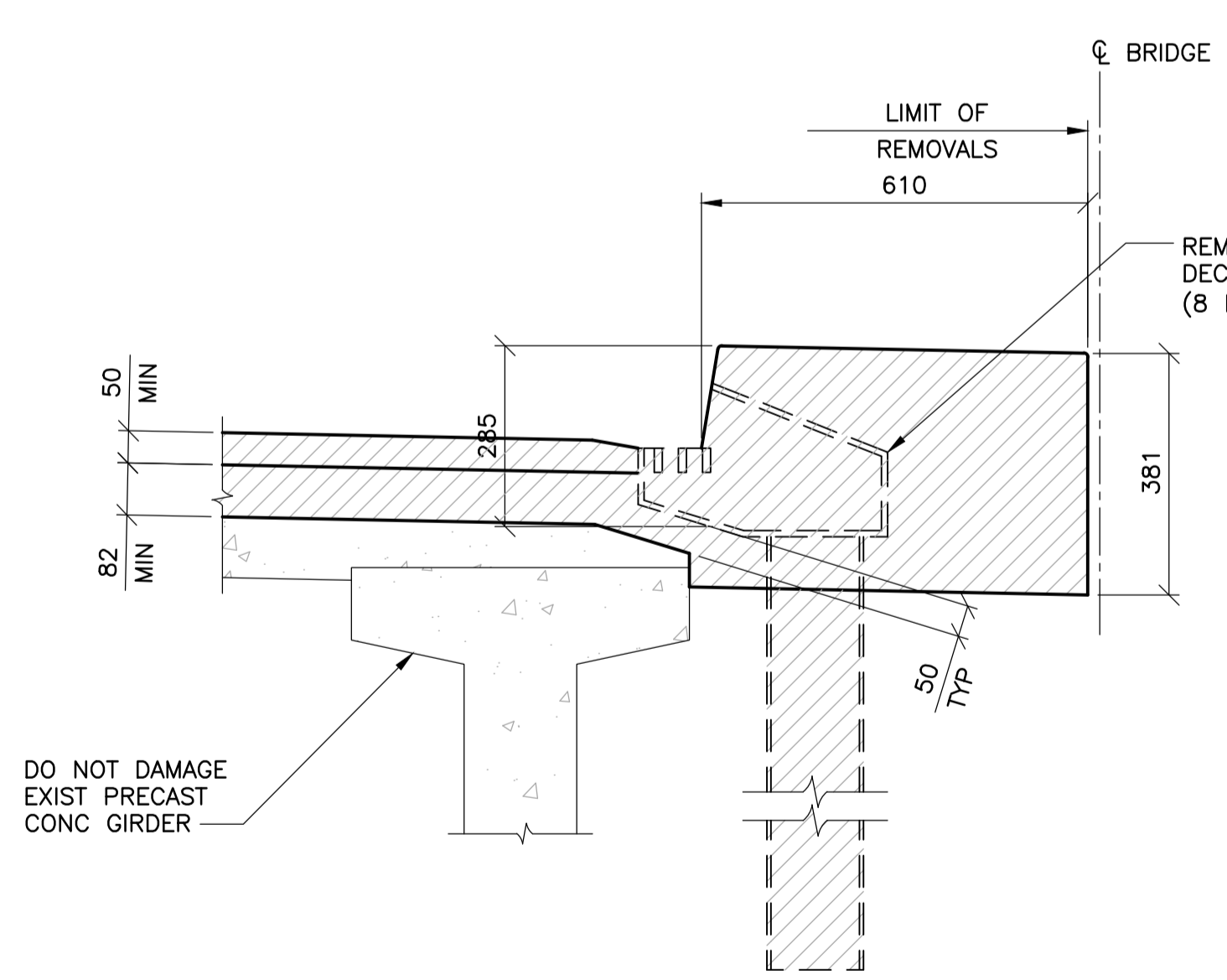


2 DETAIL
68 | 69 1 : 10

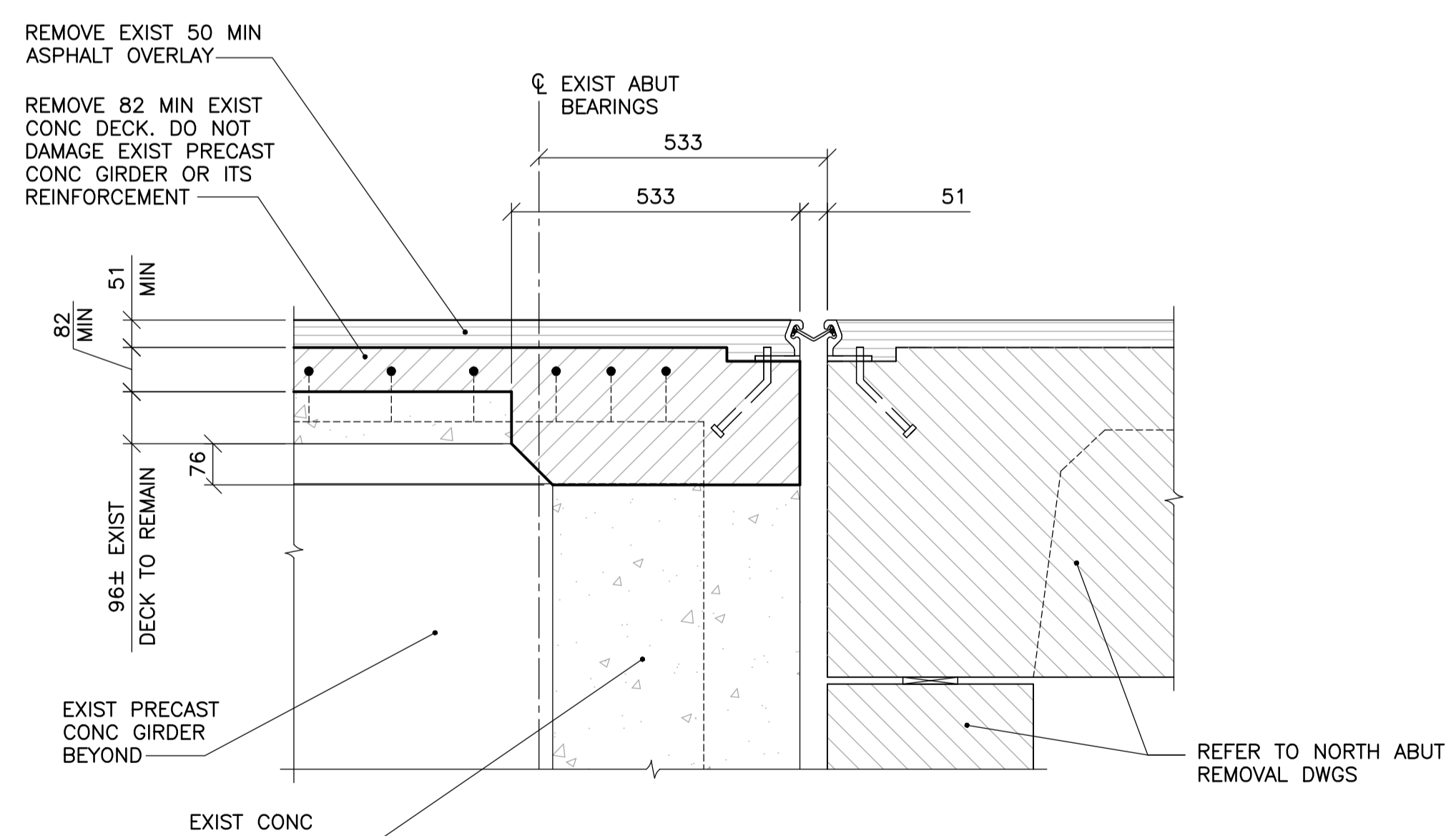
* ENSURE THAT CONCRETE REMOVAL IS SUFFICIENT TO REMOVE EXIST TOP MAT OF REINFORCING COMPLETELY.



3 DETAIL
68 | 69 1 : 10

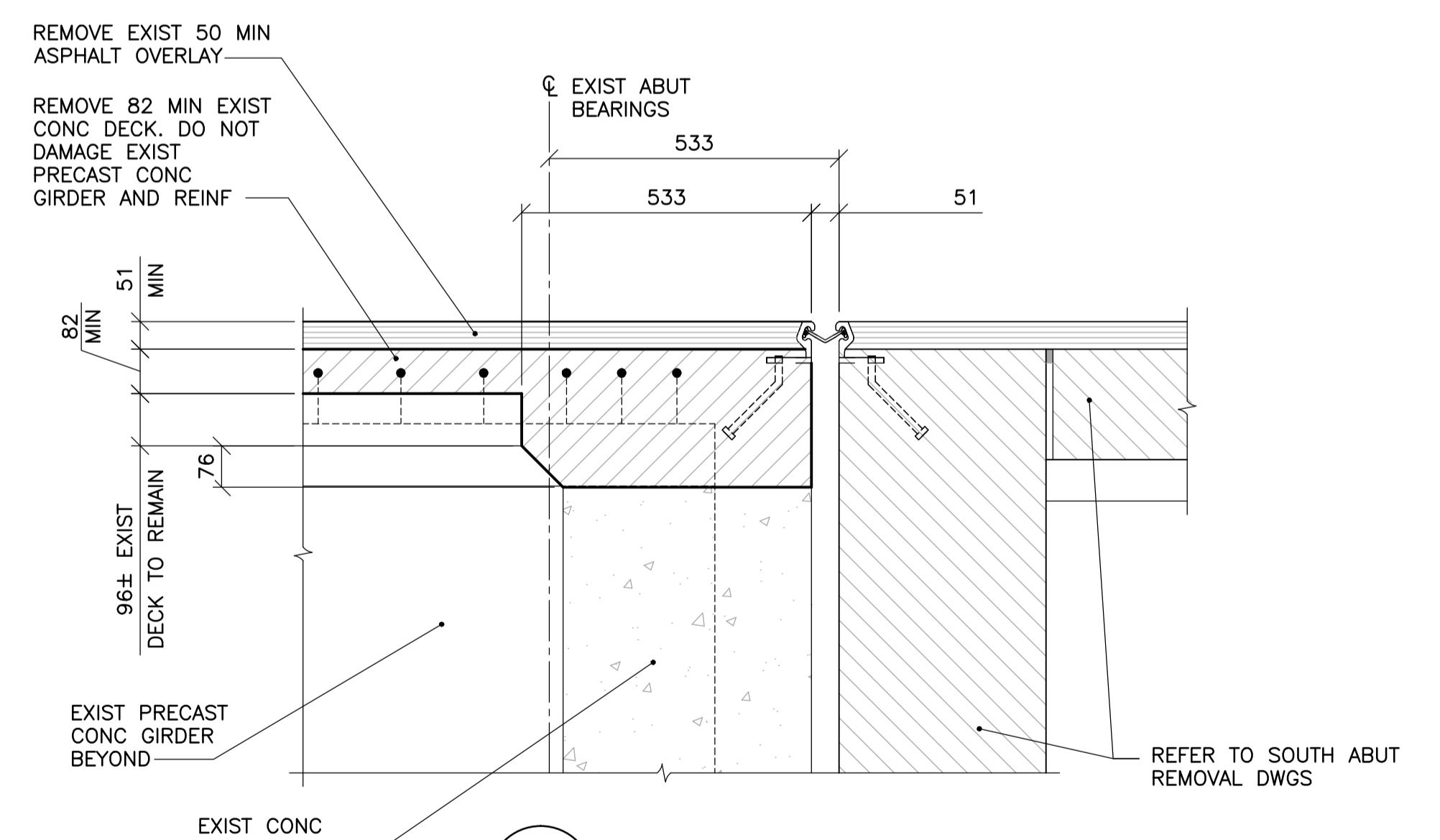


4 DETAIL
68 | 69 1 : 10



5 SECTION
68 | 69 1 : 10

EXIST PRECAST CONC GIRDER TO BE PROTECTED FROM DAMAGE



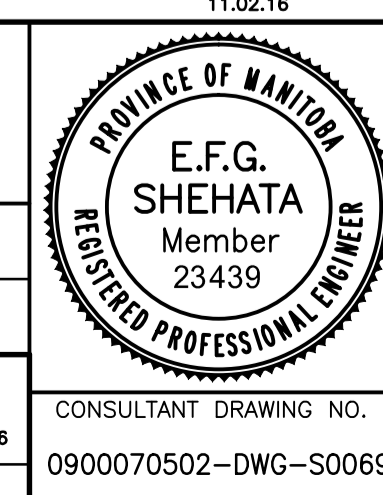
6 SECTION
68 | 69 1 : 10

EXIST PRECAST CONC GIRDER TO BE PROTECTED FROM DAMAGE



B.M. ELEV.	F.B.	DATE	BY
		11.02.18	EFS
		10.10.13	

WARDROP ATETRA TECH COMPANY	
DESIGNED BY V.B.	CHECKED BY E.F.S.
DRAWN BY B.M.	APPROVED BY R.H.W.
HOR. SCALE: AS NOTED	RELEASED FOR CONSTRUCTION DATE 11.02.18
VERTICAL: AS NOTED	ORIGINAL SIGNED 11.02.18
00 ISSUED FOR TENDER	DATE 11.02.18 BY EFS
NO. REVISIONS	DATE 10.10.13 BY



THE CITY OF WINNIPEG PUBLIC WORKS DEPARTMENT ENGINEERING DIVISION	
OSBORNE STREET BRIDGE REHABILITATION & RELATED WORKS	CITY DRAWING NUMBER B109-11-074 SHEET 69 OF 131
BRIDGE DECK PHASE 2 REMOVAL	9900070502-DWG-S0069
69	