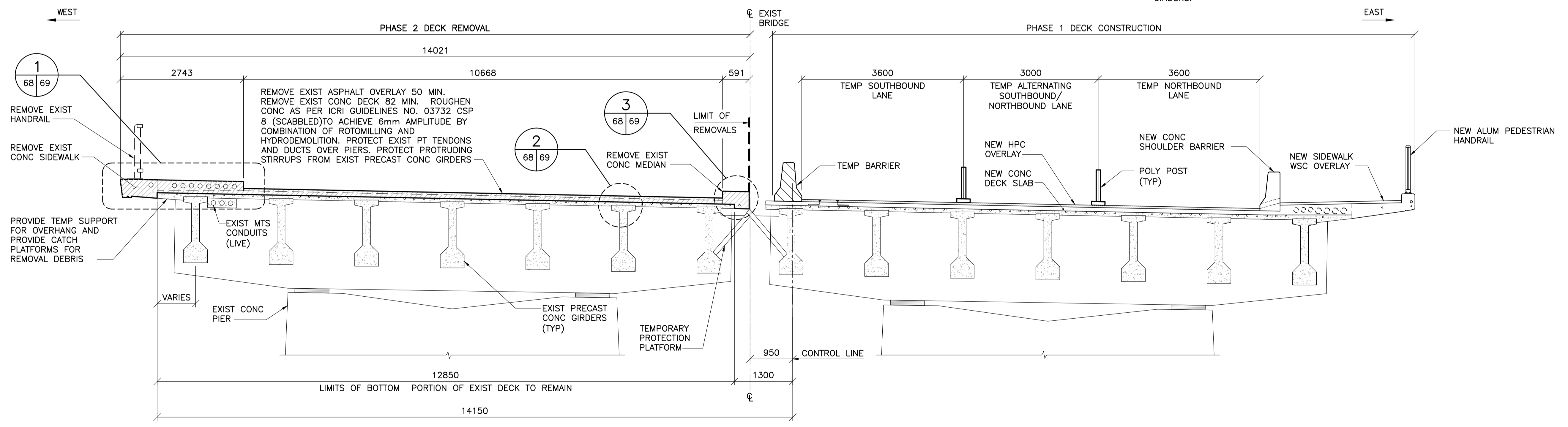


1 PLAN - PHASE 2 DECK REMOVAL
1 : 250



2 SECTION - PHASE 2 DECK REMOVAL
1 : 50

NOTES:
REFER TO SHEET 5 FOR PROCEDURE AND SEQUENCE OF STRUCTURAL REMOVALS FOR DECK REMOVAL.



B.M. ELEV.	F.B.	DATE	BY
		11.02.18	EFS
		10.10.13	

WARDROP
ATETRA TECH COMPANY

DESIGNED BY V.B.	CHECKED BY E.F.S.
DRAWN BY B.M.	APPROVED BY R.H.W.
HOR. SCALE: AS NOTED	RELEASED FOR CONSTRUCTION DATE 11.02.18
VERTICAL: AS NOTED	ORIGINAL SIGNED DATE 11.02.18

00 ISSUED FOR TENDER 11.02.18 EFS
NO. REVISIONS DATE BY

ORIGINAL SIGNED 11.02.18

E.F.G. SHEHATA
Member 23439
REGISTERED PROFESSIONAL ENGINEER
PROVINCE OF MANITOBA

THE CITY OF WINNIPEG
PUBLIC WORKS DEPARTMENT
ENGINEERING DIVISION

OSBORNE STREET BRIDGE
REHABILITATION & RELATED WORKS

BRIDGE DECK
PHASE 2 REMOVAL

CITY DRAWING NUMBER B109-11-073
SHEET 68 OF 131

94