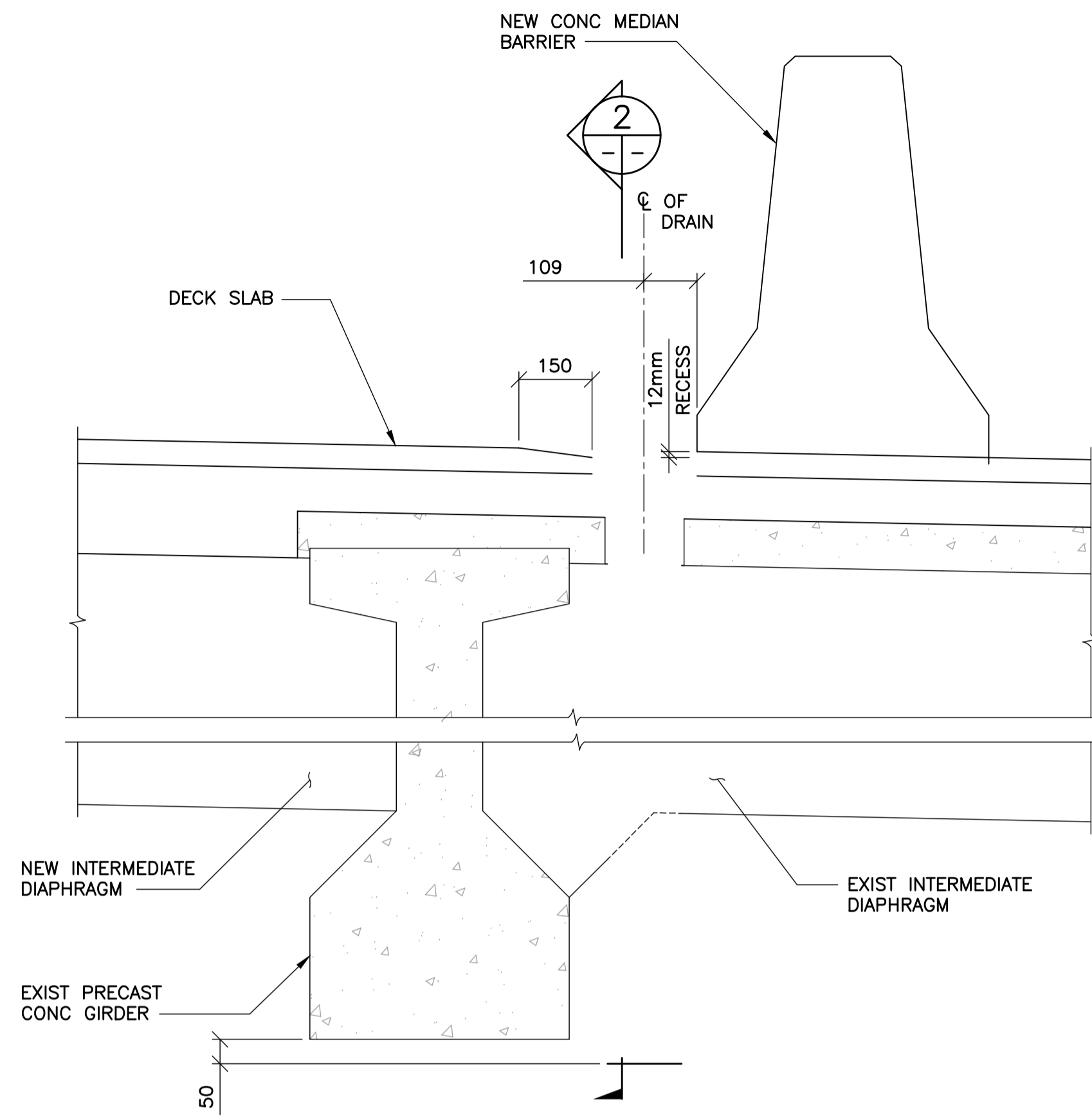
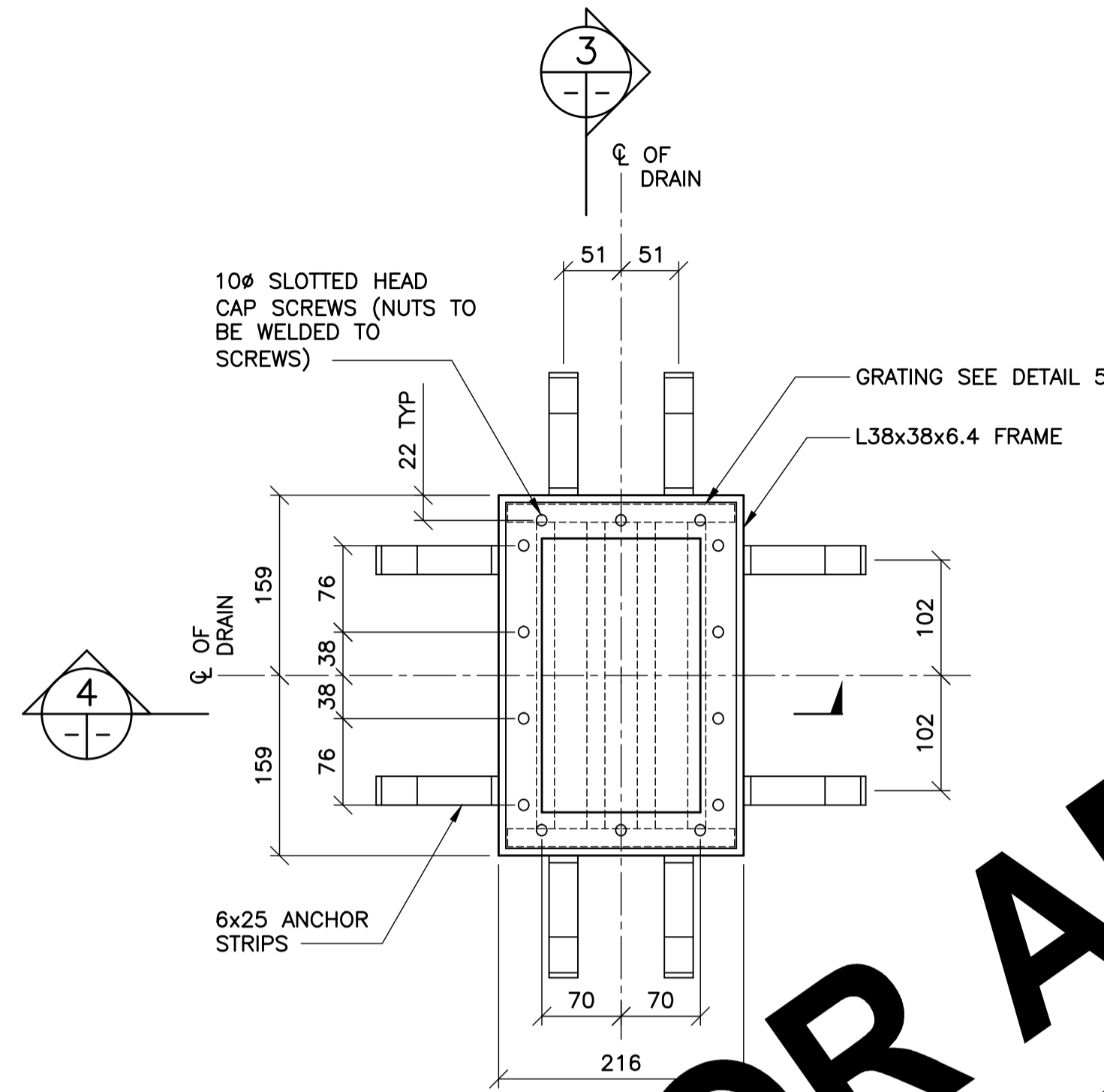


DECK DRAINS - BILL OF MATERIALS

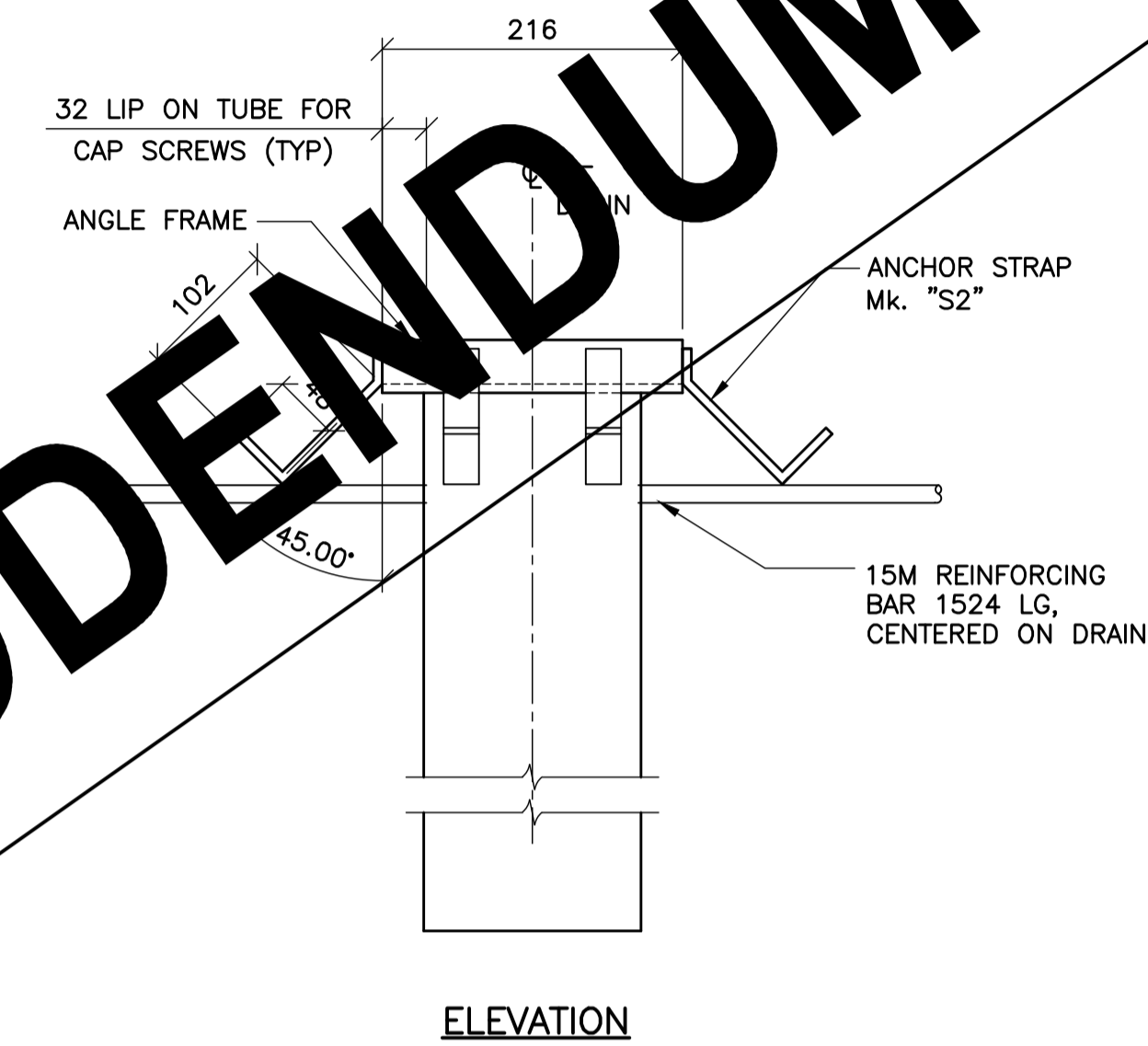
No.	DESCRIPTION	SIZE	COMPONENT MASS	MASS PER UNIT	TOTAL MASS
2	DECK DRAIN (COMPLETELY GALVANIZED)				120.68
	EACH UNIT TO BE FABRICATED FROM:				
	ANGLES FRAME	1 - 38x38x6.4 ANGLES SEE DETAIL	3.42	3.42	
	RECTANGULAR STEEL PIPE	1 - 254x156, 10Ga, 2057 LONG	45.91	45.91	
	DRAIN GRATING	1 - SEE DETAIL	6.01	6.01	
	ANCHOR STRAPS Mk. "S2"	8 - 25x6 PLATE, SEE DETAIL	0.227	1.82	
	REINFORCING BARS	2 - 15M REINFORCING BAR x1524 LONG	1.51	3.02	
	SLOTTED HEAD CAP SCREWS	14 - 9.5#x19 LONG WITH HEX NUT	0.02	0.16	
				60.34	



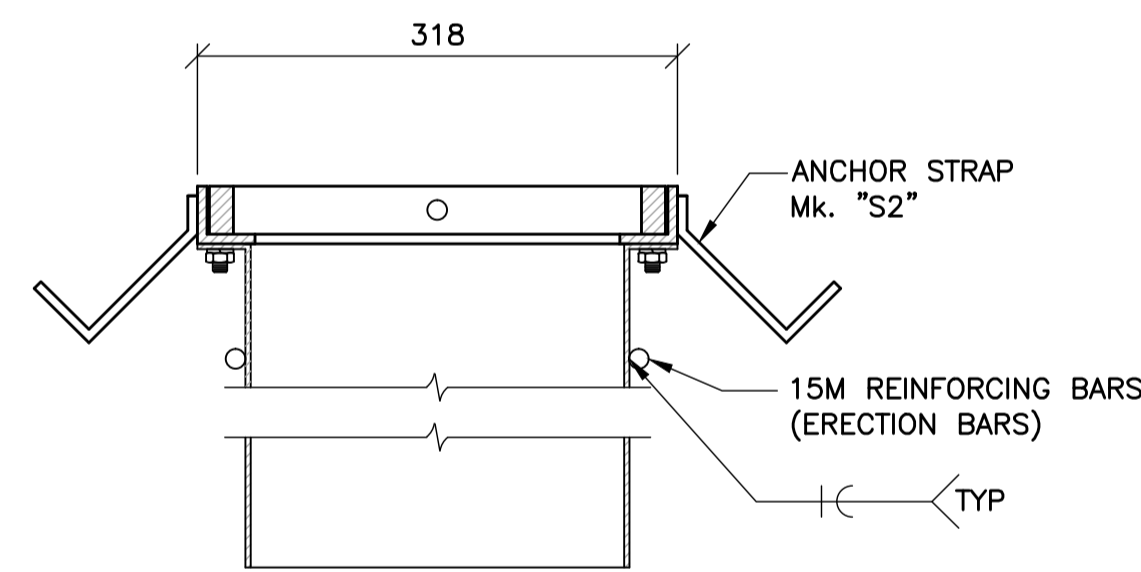
1 DECK DRAIN
1 : 10



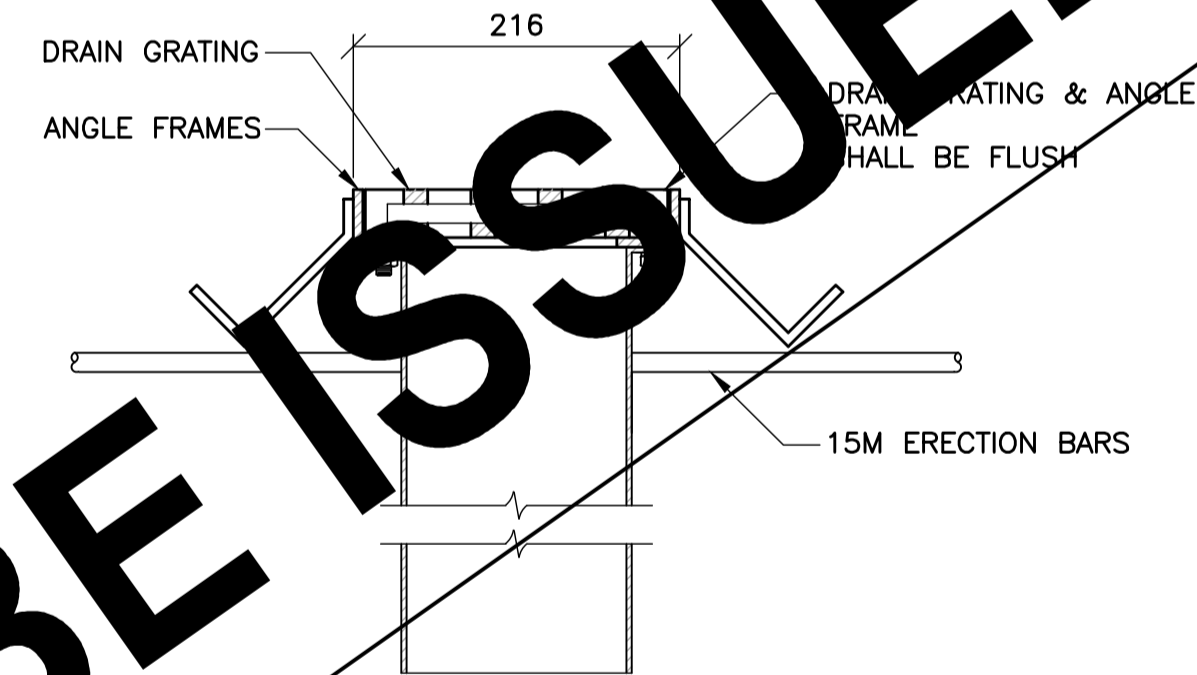
3 DECK DRAIN
1 : 5



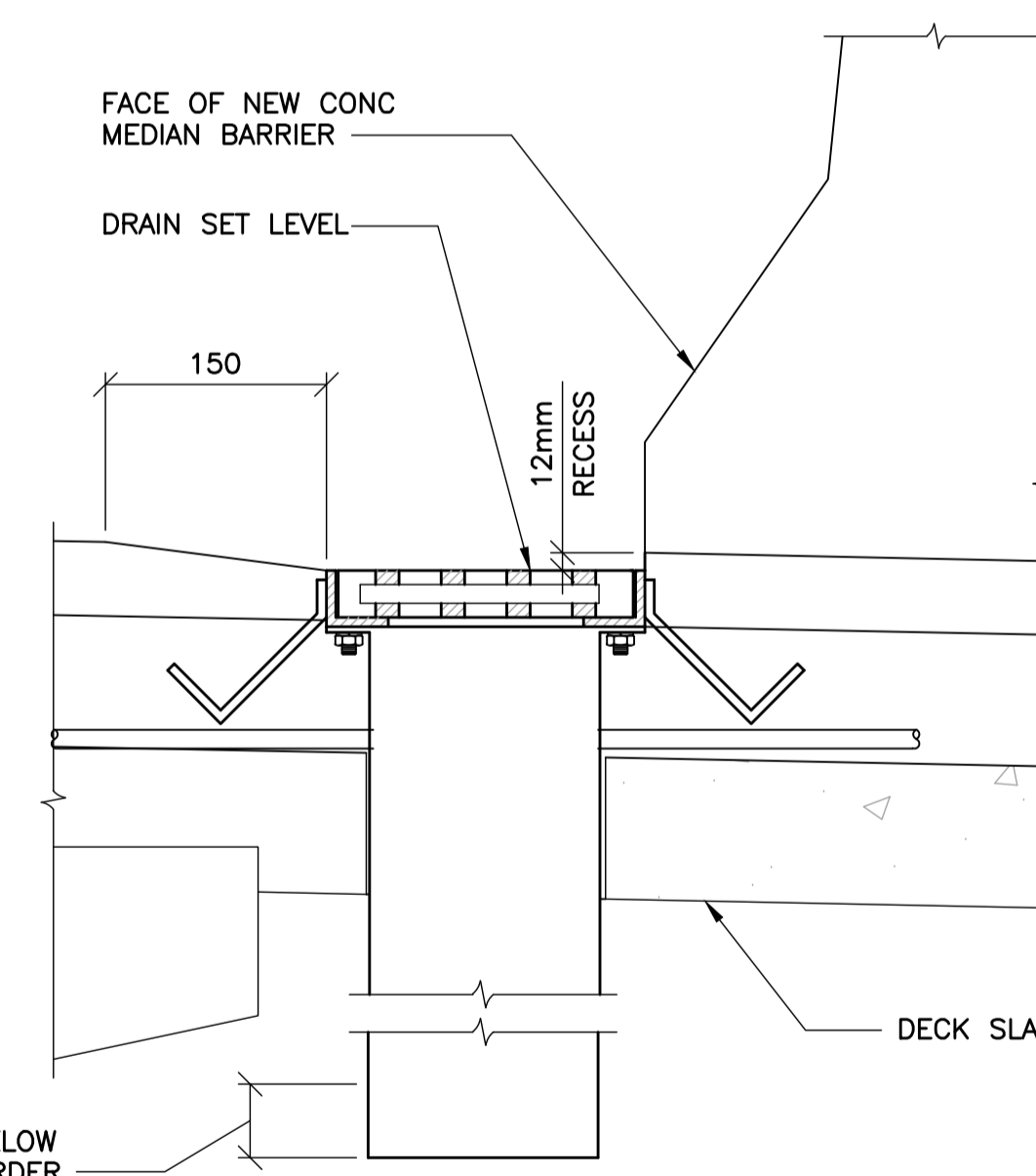
ELEVATION



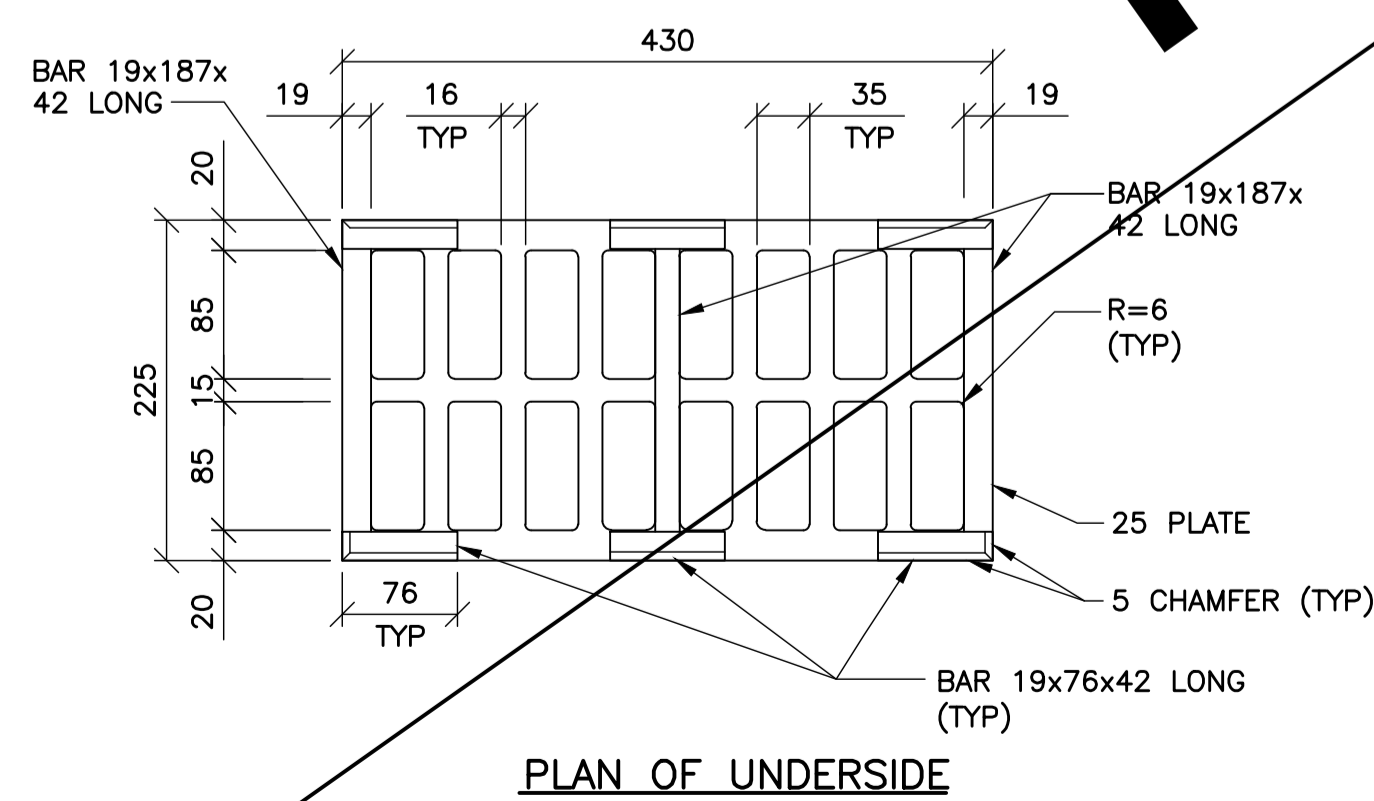
3 SECTION
1 : 5



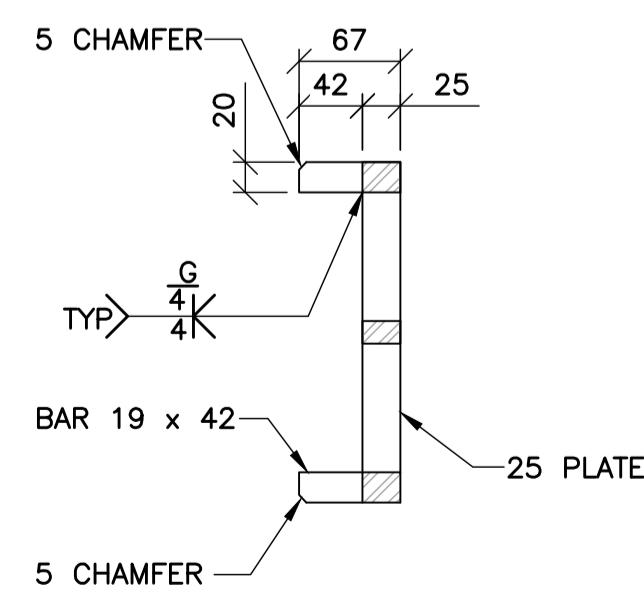
4 SECTION
1 : 5



7 DECK DRAIN
1 : 5



PLAN OF UNDERSIDE



SECTION

5 GRATING DETAIL
1 : 5

ERECTION NOTES

- BOTH DRAIN UNITS SHALL BE ERECTED BEFORE PLACING ANY REINFORCING STEEL ON THE DECK SLAB.
- AT EACH DRAIN UNIT ONE MAIN REINFORCING BAR & ONE DISTRIBUTION REINFORCING BAR IN TOP & BOTTOM LAYER WILL BE REQUIRED TO BE CUT WITHIN ONE INCH OF THE DRAIN.
- THE CONTRACTOR SHALL NOT DO ANY CUTTING OR BENDING WITHOUT THE CONTRACT ADMINISTRATOR'S APPROVAL FOR LAYOUT OF DECK DRAINS, SEE SHEET No. 42.



B.M. ELEV.	F.B.	WARDROP A TETRA TECH COMPANY		THE CITY OF WINNIPEG PUBLIC WORKS DEPARTMENT ENGINEERING DIVISION	
		DESIGNED BY V.B.	CHECKED BY E.F.S.	OSBORNE STREET BRIDGE REHABILITATION & RELATED WORKS	
		DRAWN BY B.M.	APPROVED BY R.H.W.	CITY DRAWING NUMBER B109-11-068	
		HOR. SCALE: AS NOTED	RELEASED FOR CONSTRUCTION ORIGINAL SIGNED	SHEET 63 OF 131	
		VERTICAL: AS NOTED	DATE 11.02.16	DECK DRAIN DETAILS	
00	ISSUED FOR TENDER	11.02.18	EFS	CONSULTANT DRAWING NO. 0900070502-DWG-S0063	
NO.	REVISIONS	DATE	BY	DATE 10.10.13	
				MATT CHISLETT, P.ENG BRIDGE PROJECTS ENGINEER	