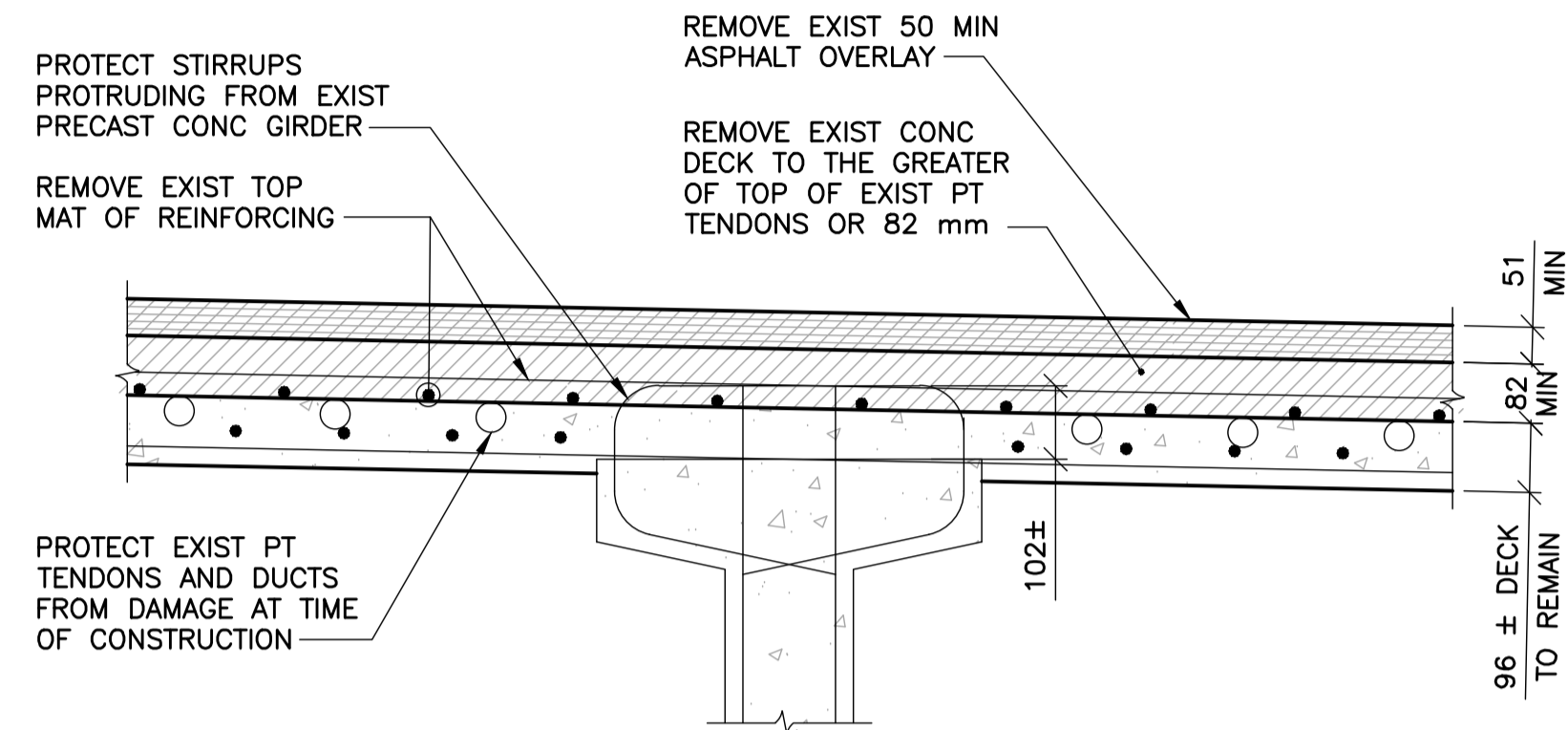
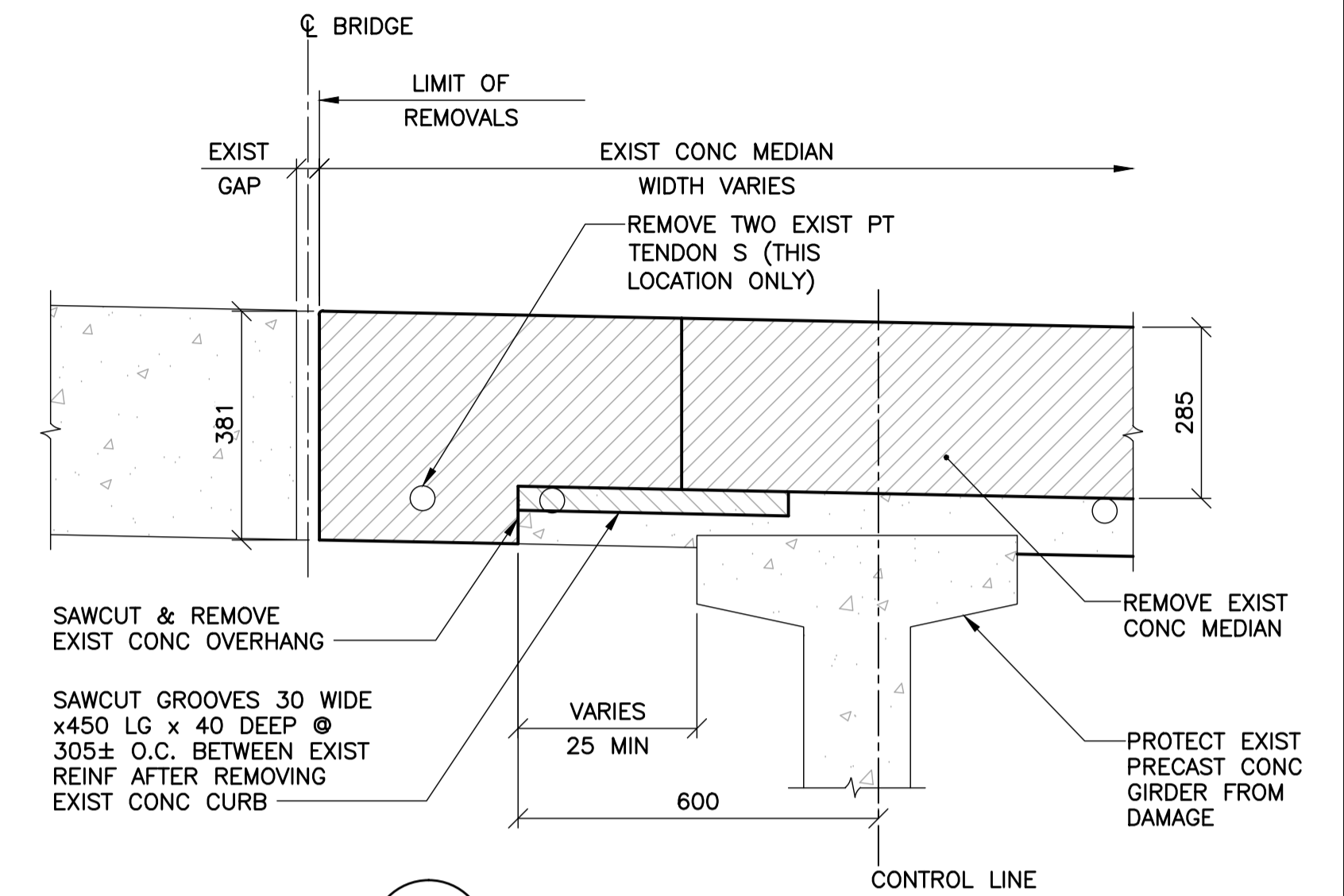


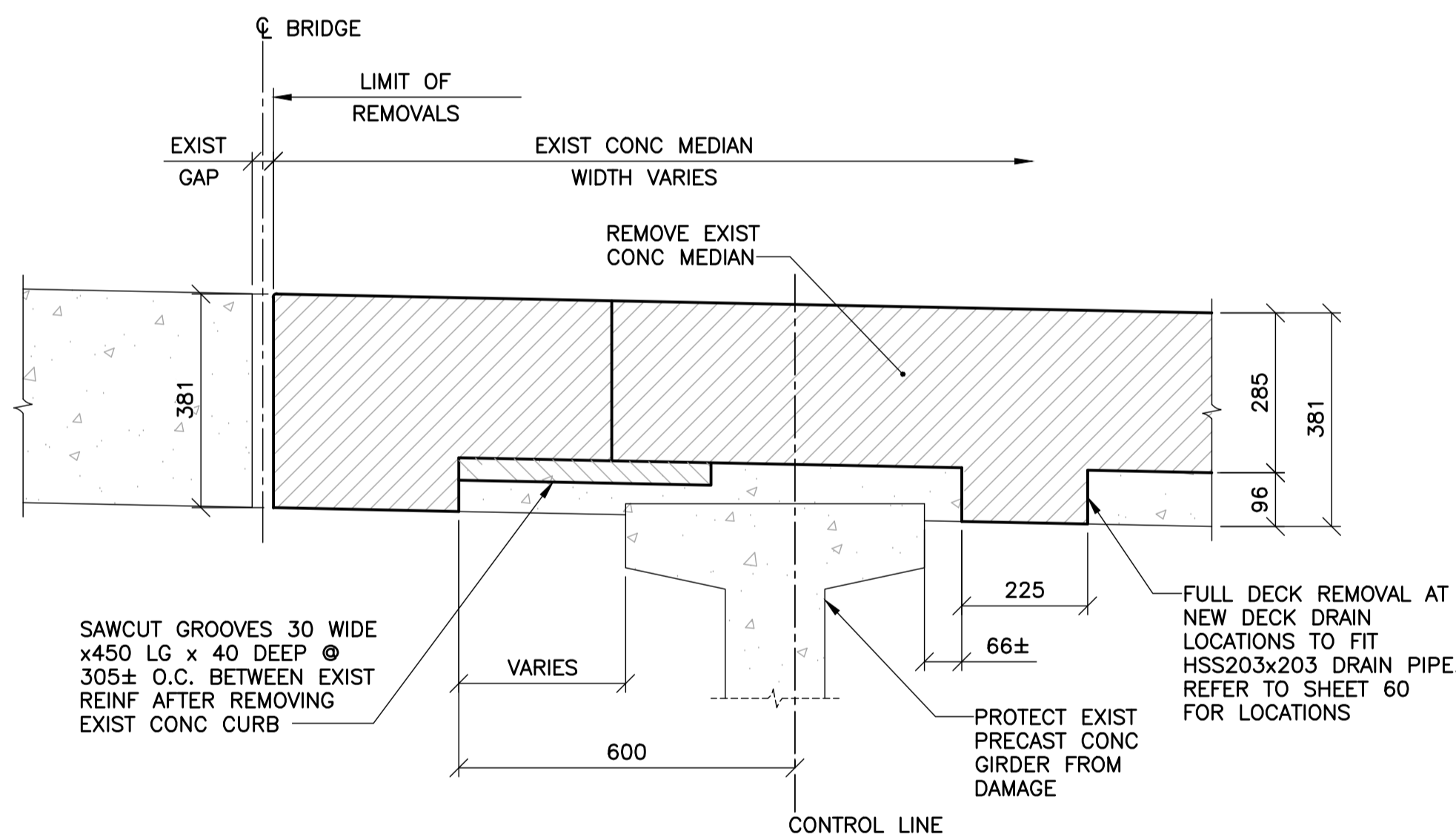
1 DETAIL
56 57 1 : 10



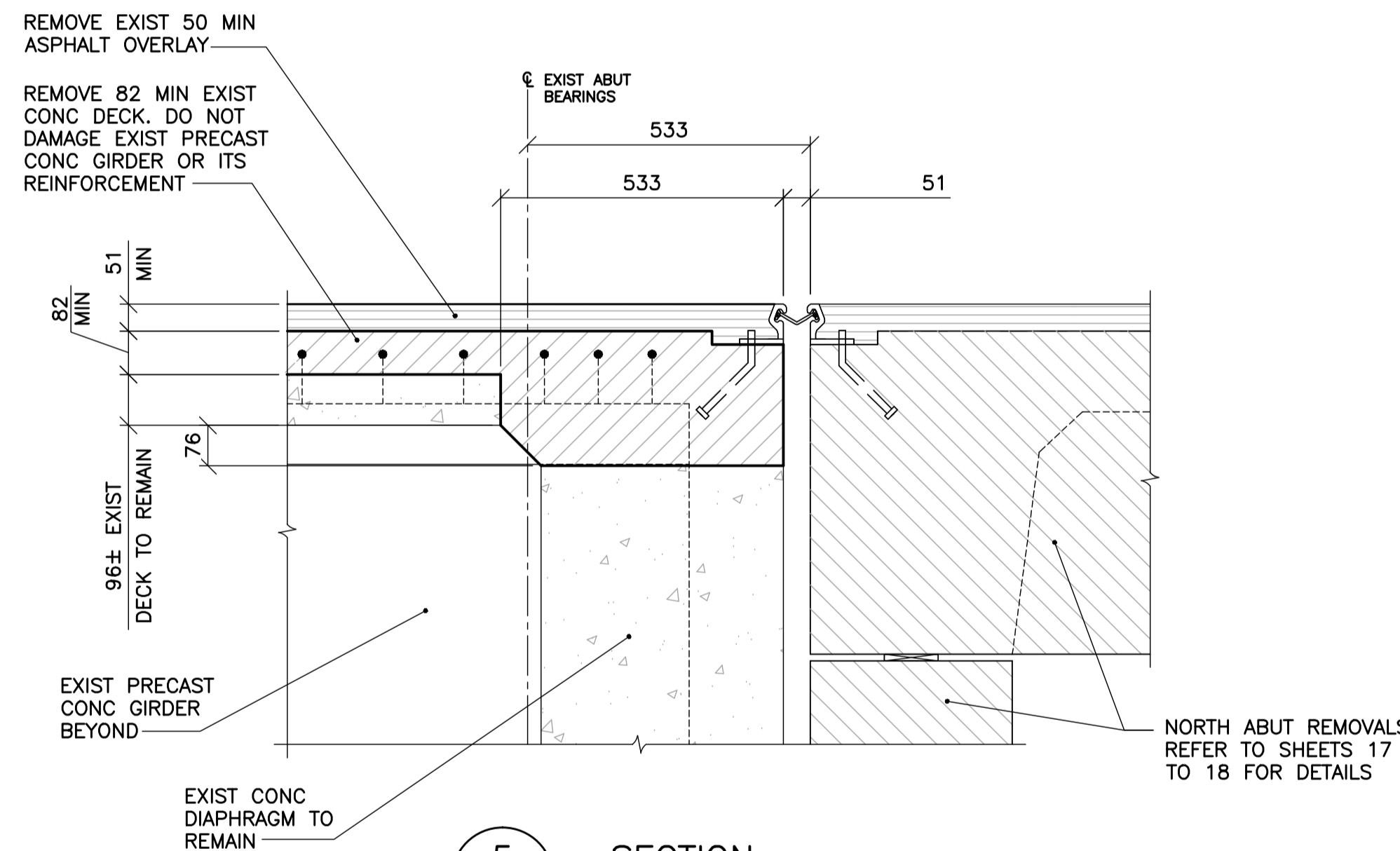
2 DETAIL
56 57 1 : 10
* ENSURE THAT CONCRETE REMOVAL IS SUFFICIENT TO COMPLETELY REMOVE TOP MAT OF EXIST REINFORCING



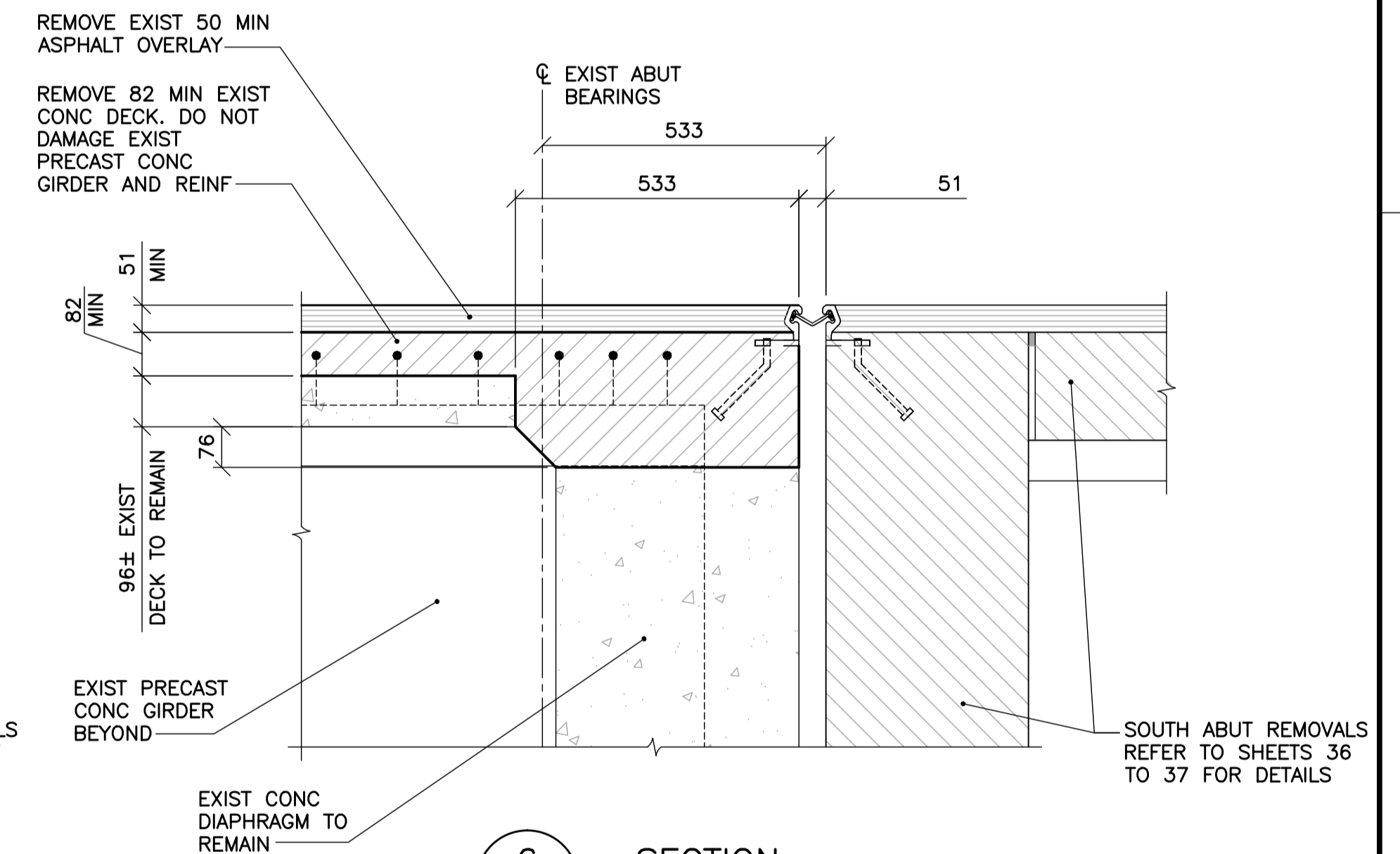
3 DETAIL
56 57 1 : 10



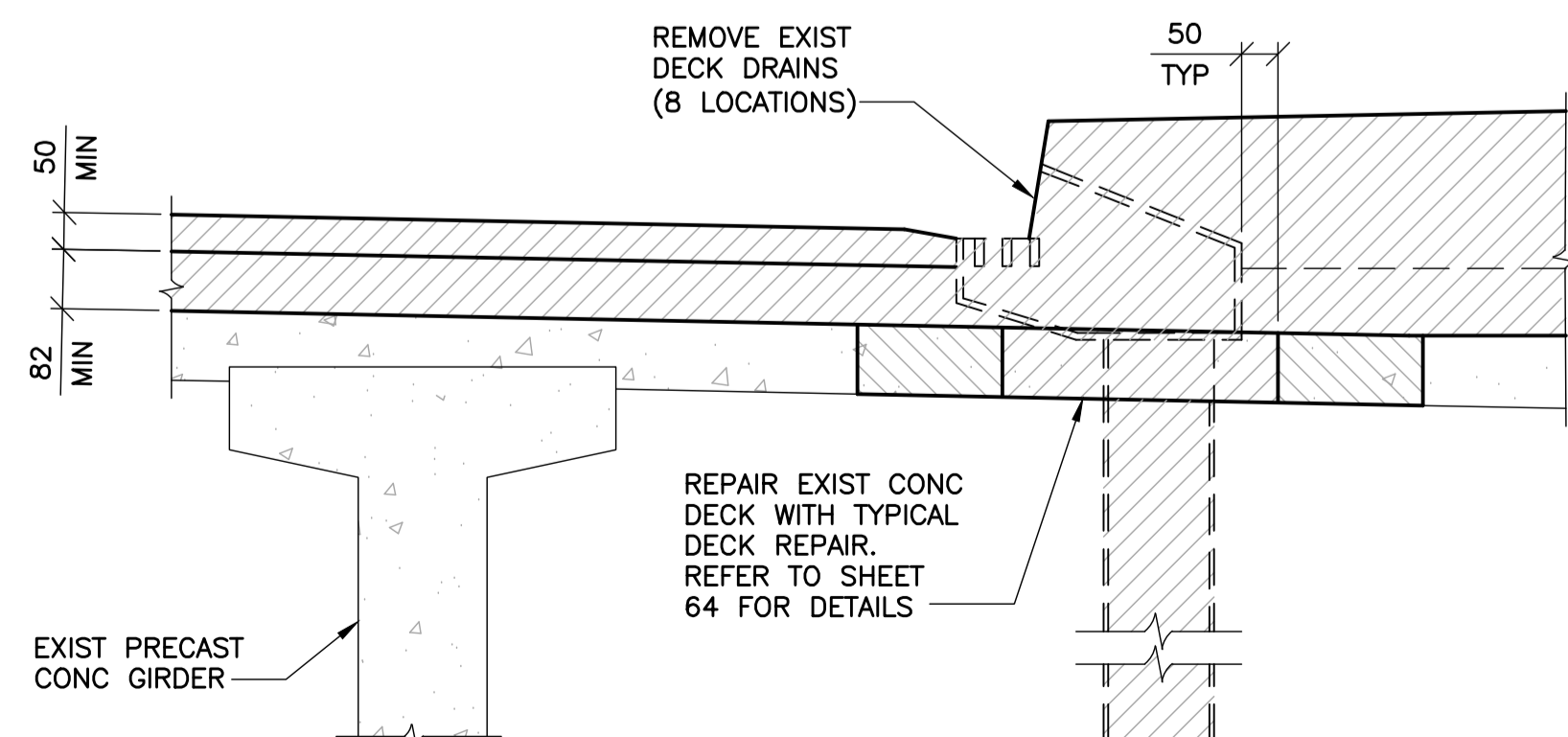
4 FULL DEPTH REMOVAL
56 57 1 : 10



5 SECTION
56 57 1 : 10
EXIST PRECAST CONC GIRDER TO BE PROTECTED FROM DAMAGE



6 SECTION
56 57 1 : 10
EXIST PRECAST CONC GIRDER TO BE PROTECTED FROM DAMAGE

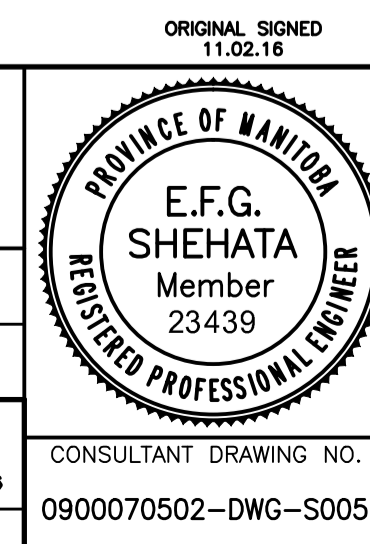


7 DETAIL
56 57 1 : 10



B.M. ELEV.	F.B.		
00	ISSUED FOR TENDER	11.02.18	EFS
NO.	REVISIONS	DATE	BY

WARDROP A TETRA TECH COMPANY	
DESIGNED BY V.B.	CHECKED BY E.F.S.
DRAWN BY B.M.	APPROVED BY R.H.W.
HOR. SCALE: AS NOTED	RELEASED FOR CONSTRUCTION DATE 11.02.16
VERTICAL: AS NOTED	ORIGINAL SIGNED DATE 11.02.16
DATE 10.10.13	MATT CHISLETT, P. ENG. BRIDGE PROJECTS ENGINEER



THE CITY OF WINNIPEG PUBLIC WORKS DEPARTMENT ENGINEERING DIVISION	
OSBORNE STREET BRIDGE REHABILITATION & RELATED WORKS	CITY DRAWING NUMBER B109-11-062 SHEET 57 OF 131
BRIDGE DECK PHASE 1 REMOVAL	57