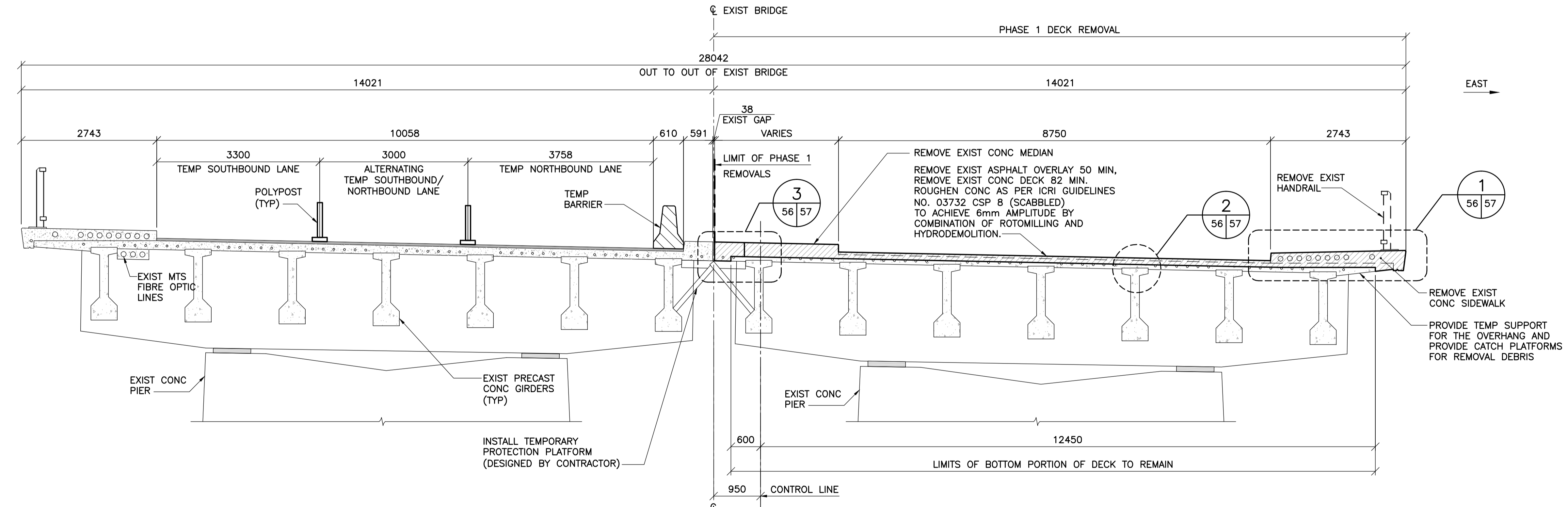


1 PLAN - PHASE 1 DECK REMOVAL
1 : 250

REMOVE EXIST ASPHALT OVERLAY 50 MIN. REMOVE EXIST CONC DECK 82 MIN. ROUGHEN CONC AS PER ICRI GUIDELINES NO. 03732 CSP 8 (SCABBLED) TO ACHIEVE 6mm AMPLITUDE BY COMBINATION OF ROTOMILLING AND HYDRODEMOLITION. PROTECT EXIST PT TENDONS AND DUCTS OVER PIERS. PROTECT STIRRUPS PROTRUDING ON EXIST PRECAST CONC GIRDERS.



2 SECTION - PHASE 1 DECK REMOVAL
1 : 50

NOTES:
REFER TO SHEET 5 FOR PROCEDURE AND SEQUENCE OF STRUCTURAL REMOVALS FOR DECK REMOVALS.



B.M. ELEV.	F.B.	WARDROP A TETRA TECH COMPANY		DESIGNED BY: V.B. CHECKED BY: E.F.S. DRAWN BY: B.M. APPROVED BY: R.H.W. HOR. SCALE: AS NOTED VERTICAL: AS NOTED	DATE: 11.02.18 DATE: 10.10.13	MATT CHESLETT, P. ENG. BRIDGE PROJECTS ENGINEER	ORIGINAL SIGNED 11.02.18	PROVINCE OF MANITOBA E.F.G. SHEHATA Member 23439 REGISTERED PROFESSIONAL ENGINEER	THE CITY OF WINNIPEG PUBLIC WORKS DEPARTMENT ENGINEERING DIVISION	OSBORNE STREET BRIDGE REHABILITATION & RELATED WORKS	CITY DRAWING NUMBER B109-11-061 SHEET 56 OF 131