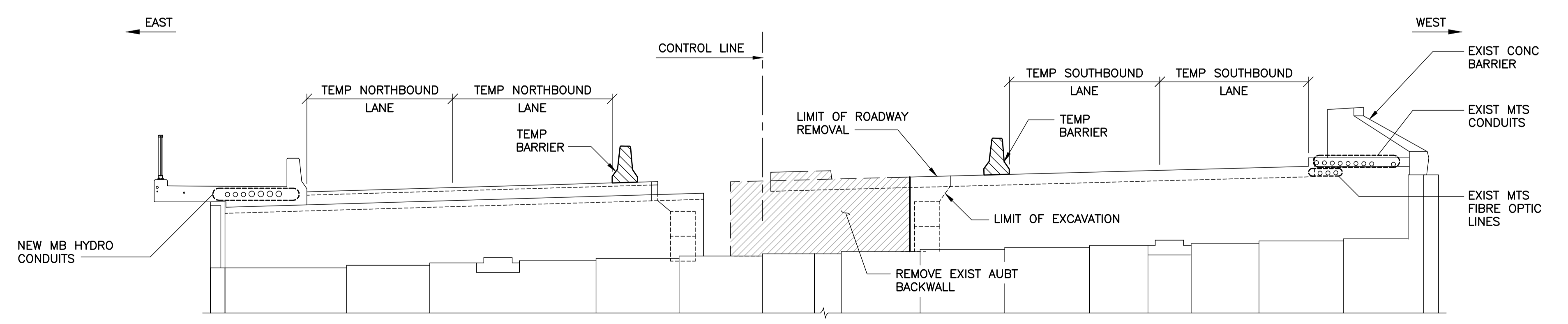


1 PLAN - SOUTH ABUTMENT PHASE 1A REMOVAL
1 : 75



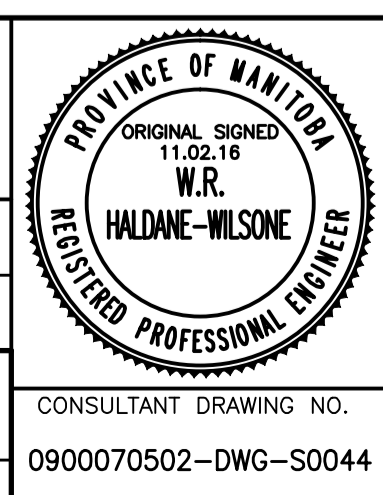
2 ELEVATION - SOUTH ABUTMENT PHASE 1A REMOVAL
1 : 75



B.M. ELEV.	F.B.	DATE	BY
00	ISSUED FOR TENDER	11.02.18	RHW
NO.	REVISIONS	DATE	BY

WARDROP
A TETRA TECH COMPANY

DESIGNED BY S.Y.	CHECKED BY R.H.W.
DRAWN BY B.M.	APPROVED BY R.H.W.
HOR. SCALE: AS NOTED	RELEASED FOR CONSTRUCTION DATE 11.02.16
VERTICAL: AS NOTED	ORIGINAL SIGNED DATE 11.02.16
DATE 10.10.20	MATT CHISLETT, P. ENG. BRIDGE PROJECTS ENGINEER



THE CITY OF WINNIPEG
PUBLIC WORKS DEPARTMENT
ENGINEERING DIVISION

OSBORNE STREET BRIDGE
REHABILITATION & RELATED WORKS

SOUTH ABUTMENT AND APPROACH SLAB
PHASE 1A REMOVAL

CITY DRAWING NUMBER	B109-11-049
SHEET	44 OF 131
	44

CONSULTANT DRAWING NO. 0900070502-DWG-S0044