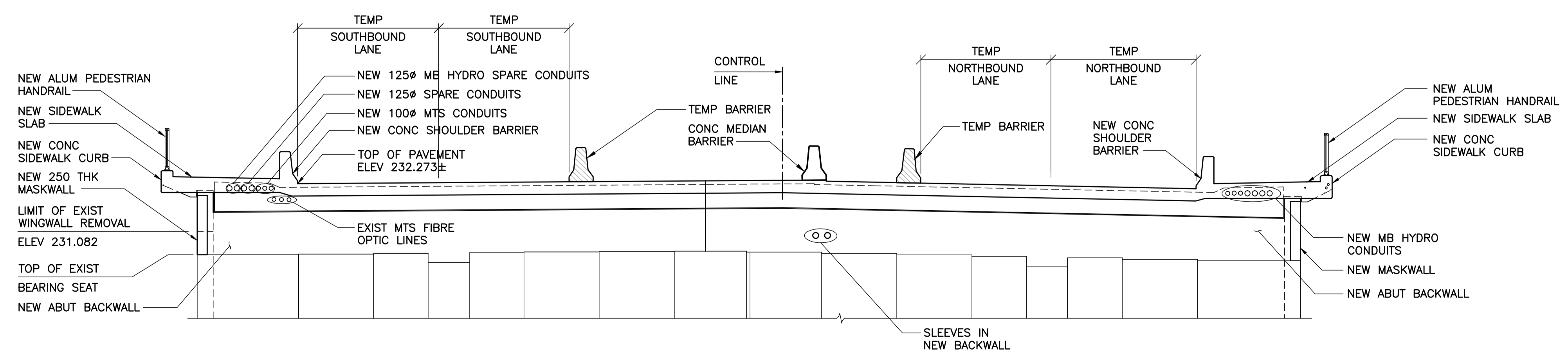


1 PLAN - NORTH ABUTMENT PHASE 2A CONSTRUCTION
1 : 75

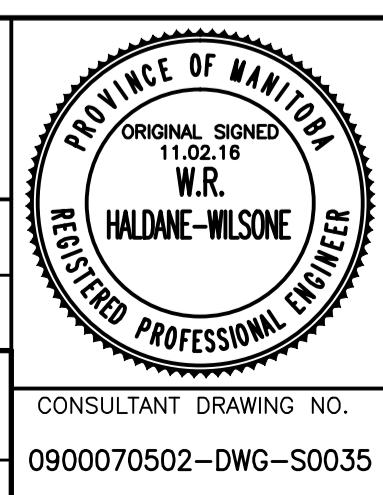
3 SECTION @ APPROACH & ROADWAY SLAB
1 : 25



2 NORTH ELEVATION - PHASE 2A CONSTRUCTION
1 : 75
- EXIST GIRDERS NOT SHOWN FOR CLARITY



| | | | |
|----------------------|--------------|--|---|
| B.M. ELEV. | F.B. | WARDROP A TETRA TECH COMPANY | |
| | | DESIGNED BY S.Y. | CHECKED BY R.H.W. |
| | | DRAWN BY B.M. | APPROVED BY R.H.W. |
| | | HOR. SCALE: AS NOTED | RELEASED FOR CONSTRUCTION DATE 11.02.16 |
| | | VERTICAL: AS NOTED | ORIGINAL SIGNED 11.02.16 |
| 00 ISSUED FOR TENDER | 11.02.18 RHW | DATE 10.10.20 | MATT CHISLETT, P. ENG. BRIDGE PROJECTS ENGINEER |
| NO. REVISIONS | DATE | BY | |



THE CITY OF WINNIPEG
PUBLIC WORKS DEPARTMENT
ENGINEERING DIVISION

OSBORNE STREET BRIDGE
REHABILITATION & RELATED WORKS

NORTH ABUTMENT AND APPROACH SLAB
PHASE 2A CONSTRUCTION

CITY DRAWING NUMBER
B109-11-040
SHEET 35 OF 131

CONSULTANT DRAWING NO.
0900070502-DWG-S0035

35