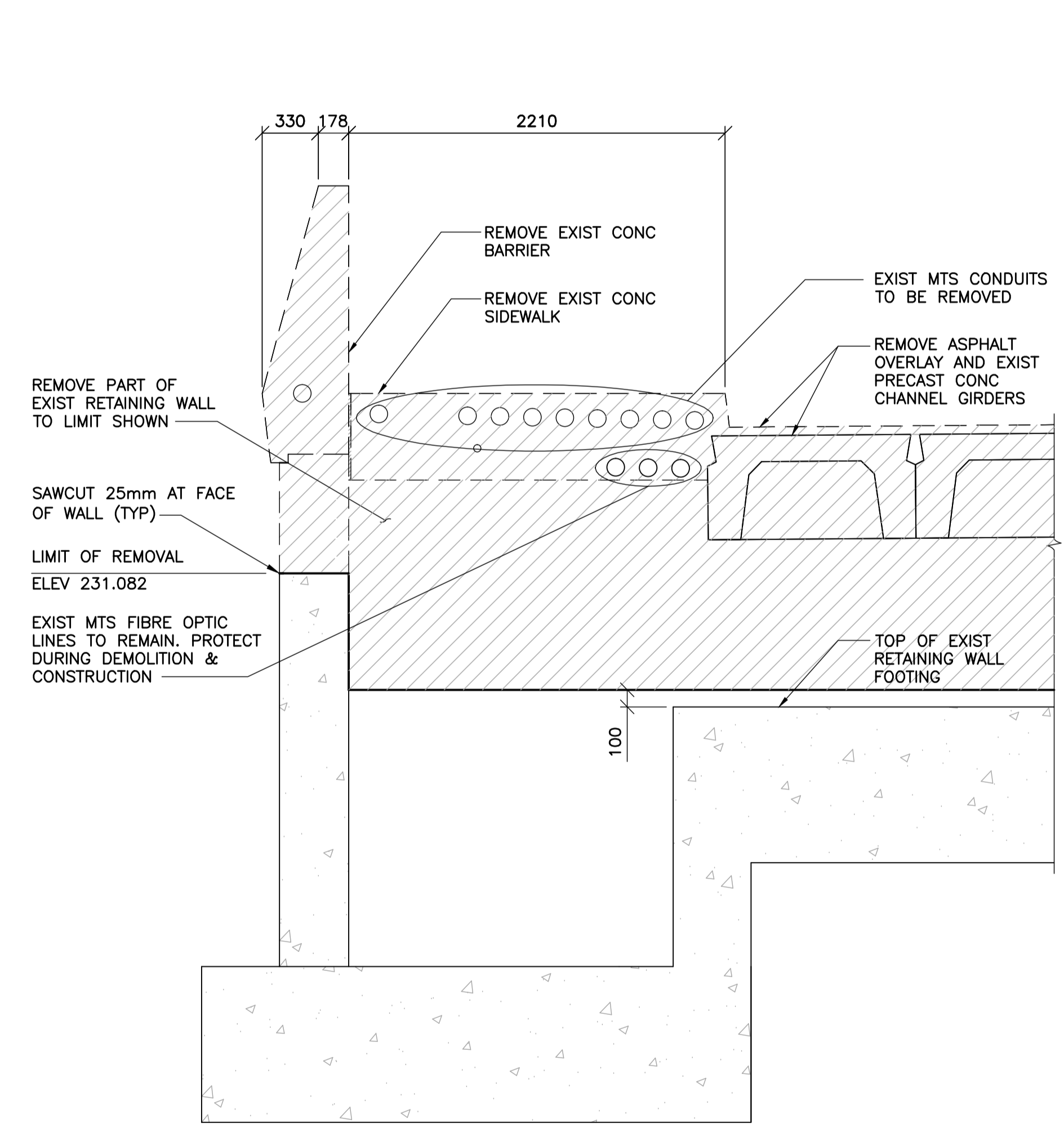
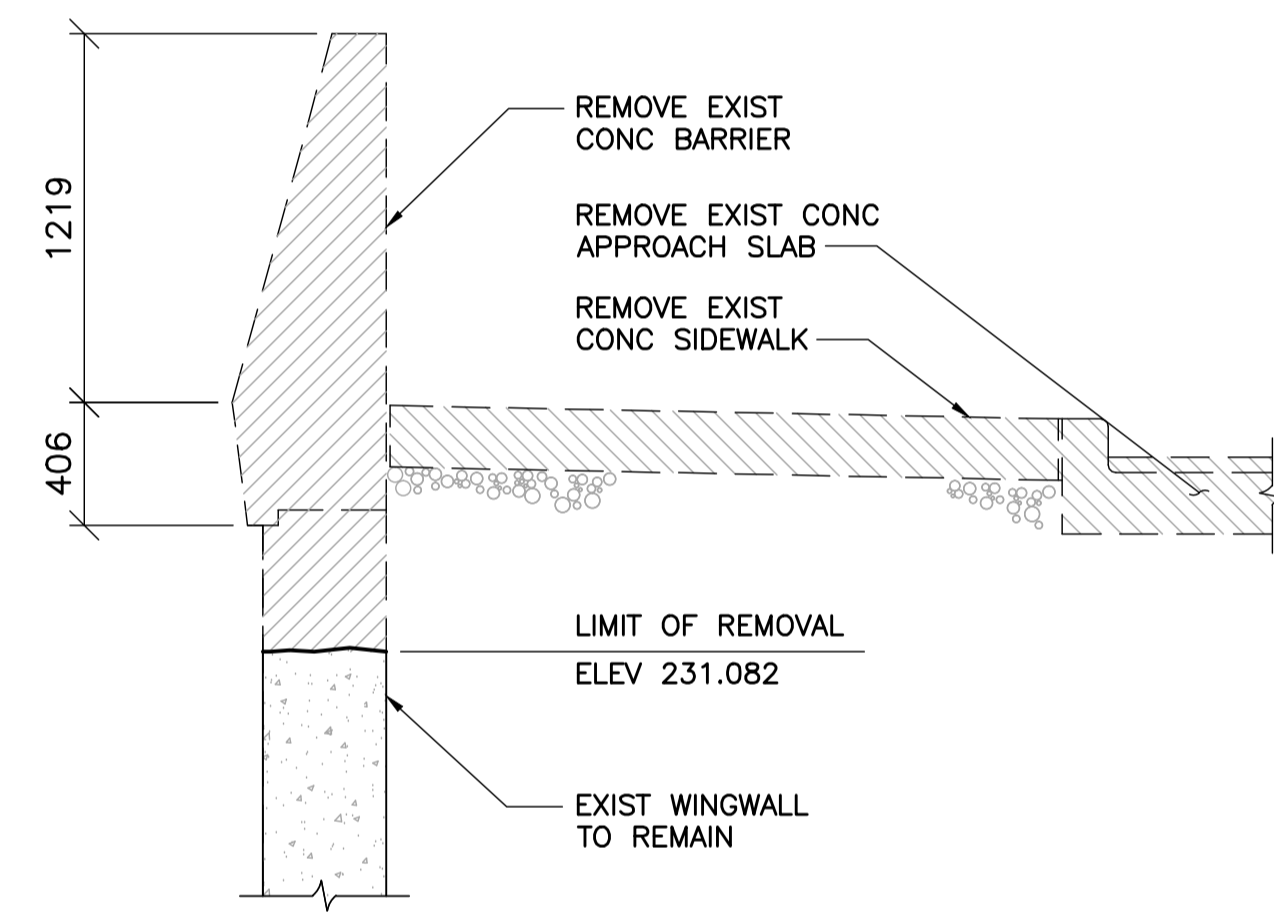


1 NORTHWEST WING WALL - ELEVATION
1 : 75

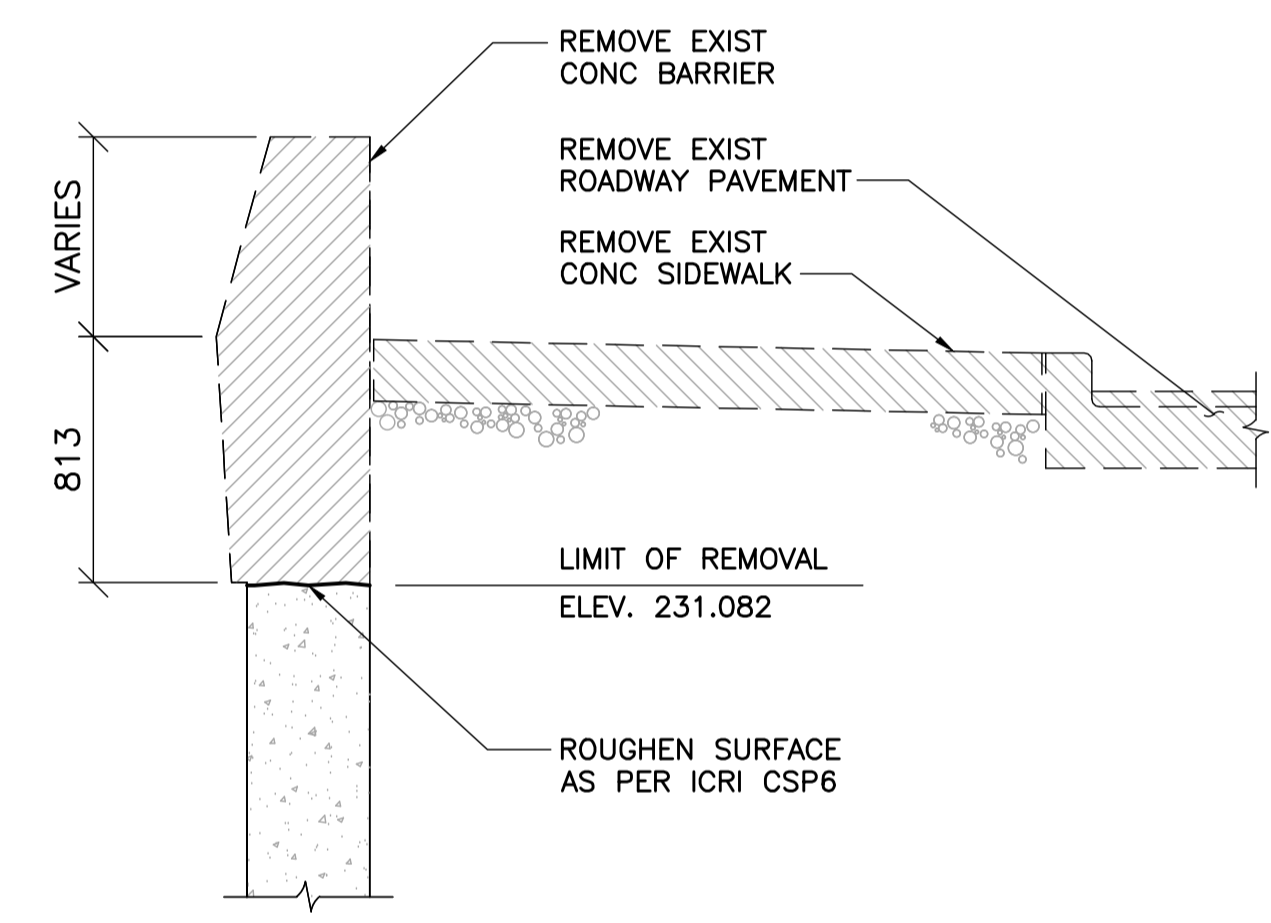
2 SECTION
1 : 50



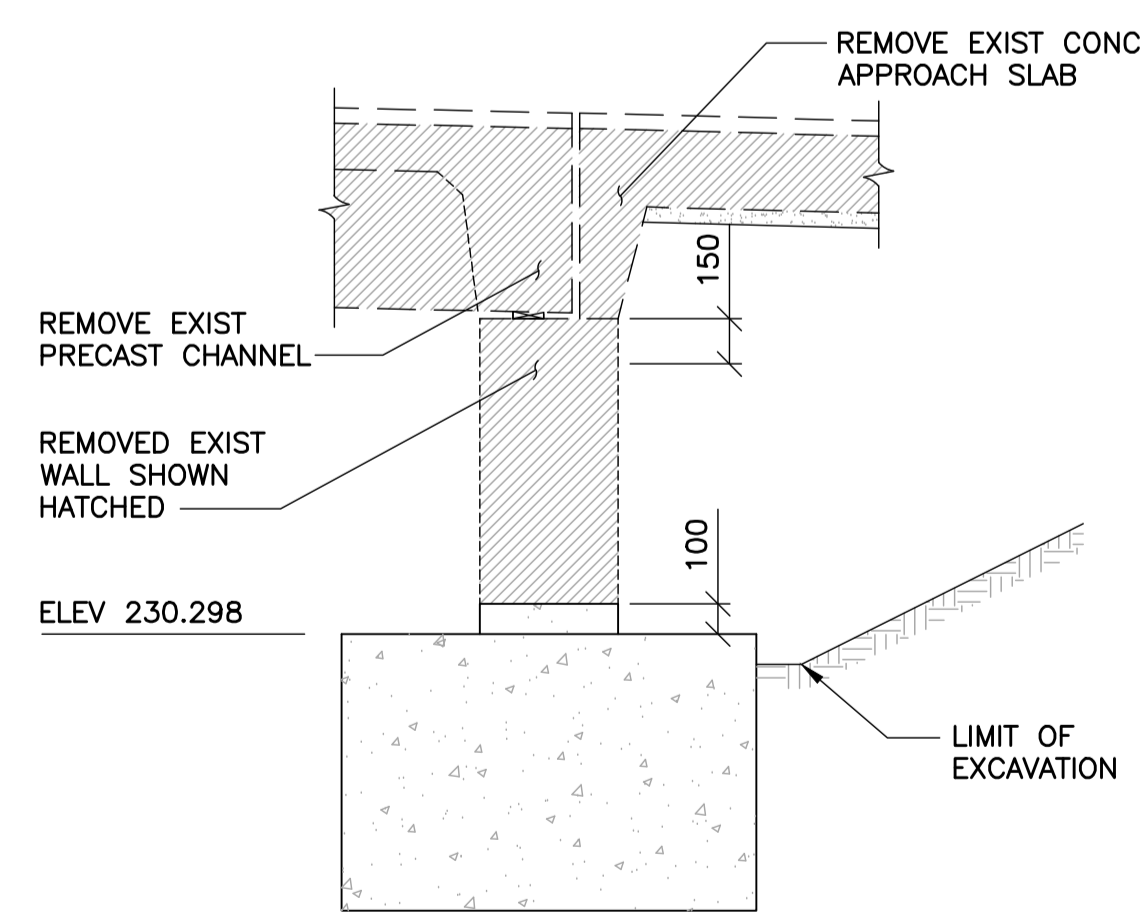
3 SECTION
1 : 25



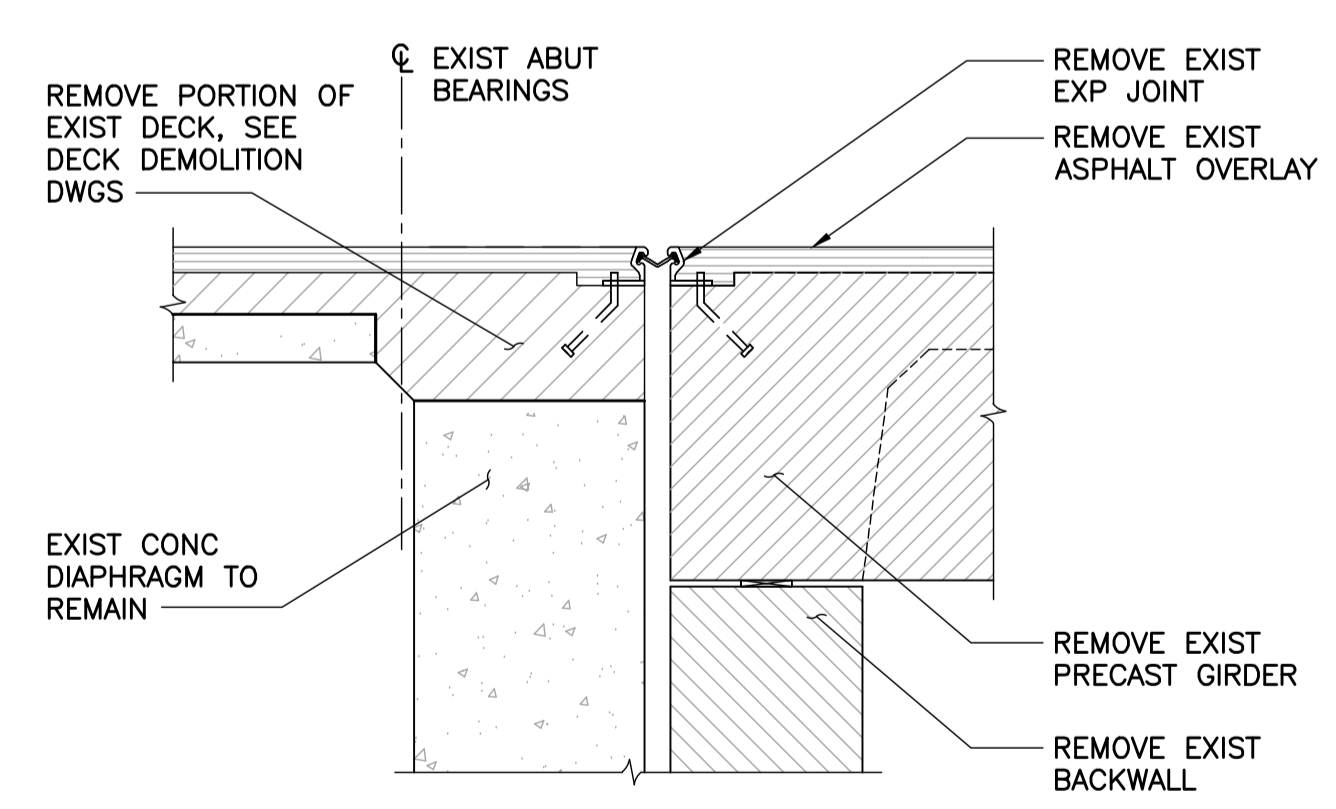
4 SECTION
1 : 25



5 SECTION
1 : 25



6 DETAIL
1 : 25

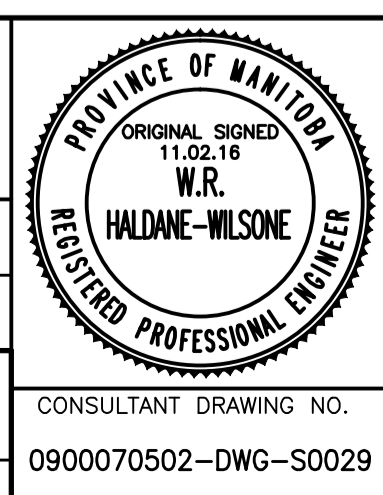


7 DETAIL
1 : 15



B.M. ELEV.	F.B.		
00	ISSUED FOR TENDER	11.02.18	RHW
NO.	REVISIONS	DATE	BY

WARDROP A TETRA TECH COMPANY	
DESIGNED BY S.Y.	CHECKED BY R.H.W.
DRAWN BY B.M.	APPROVED BY R.H.W.
HOR. SCALE: AS NOTED	RELEASED FOR CONSTRUCTION DATE 11.02.16
VERTICAL: AS NOTED	ORIGINAL SIGNED DATE 11.02.16
DATE 10.10.20	MATT CHISLETT, P. ENG. BRIDGE PROJECTS ENGINEER



THE CITY OF WINNIPEG PUBLIC WORKS DEPARTMENT ENGINEERING DIVISION	
OSBORNE STREET BRIDGE REHABILITATION & RELATED WORKS	
NORTH ABUTMENT AND APPROACH SLAB PHASE 2 REMOVAL	
CITY DRAWING NUMBER B109-11-034	SHEET 29 OF 131
99	