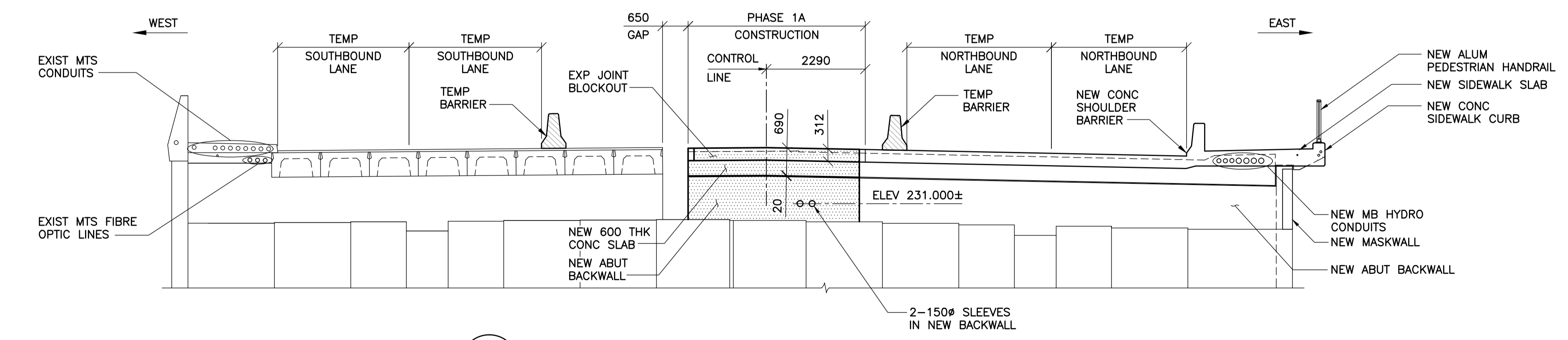
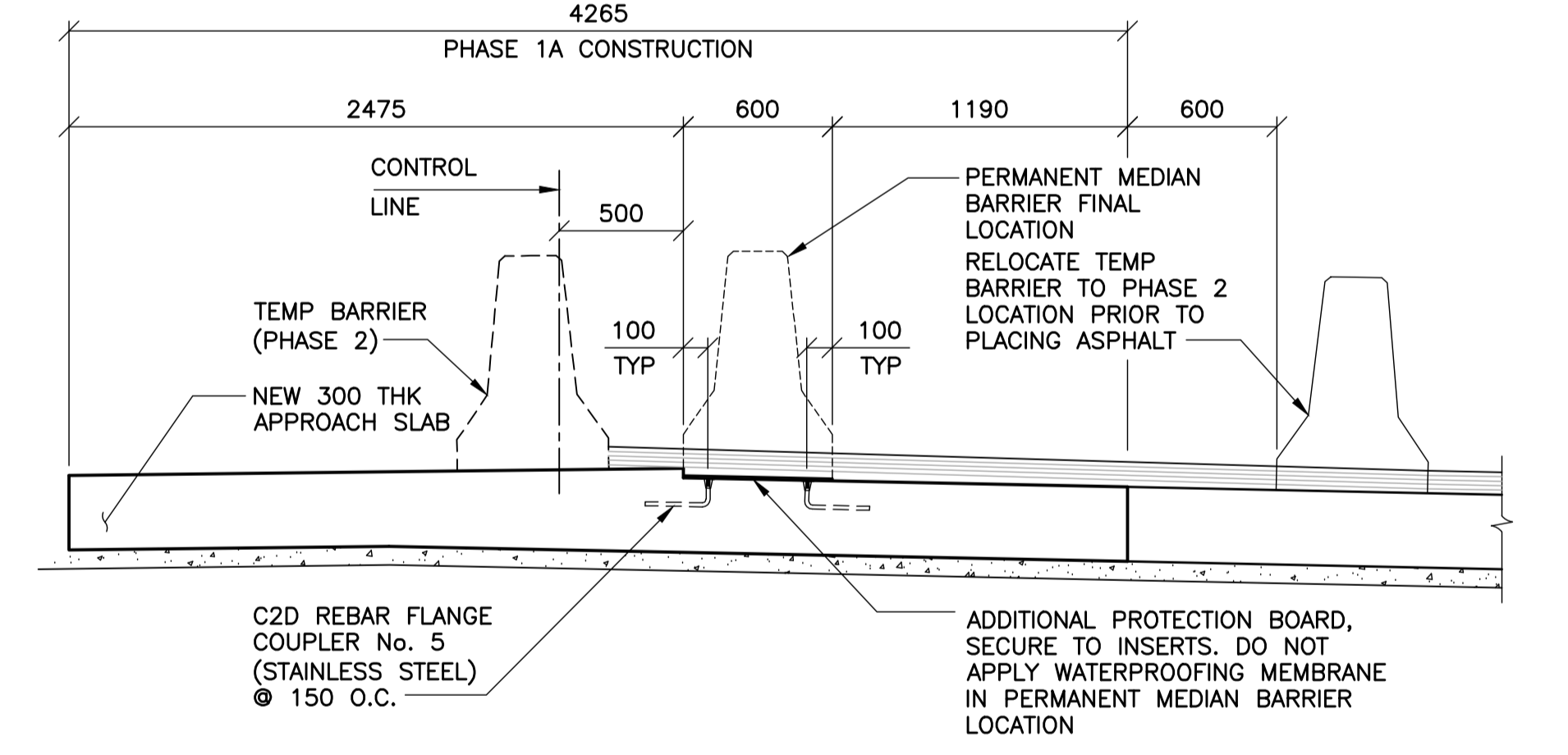
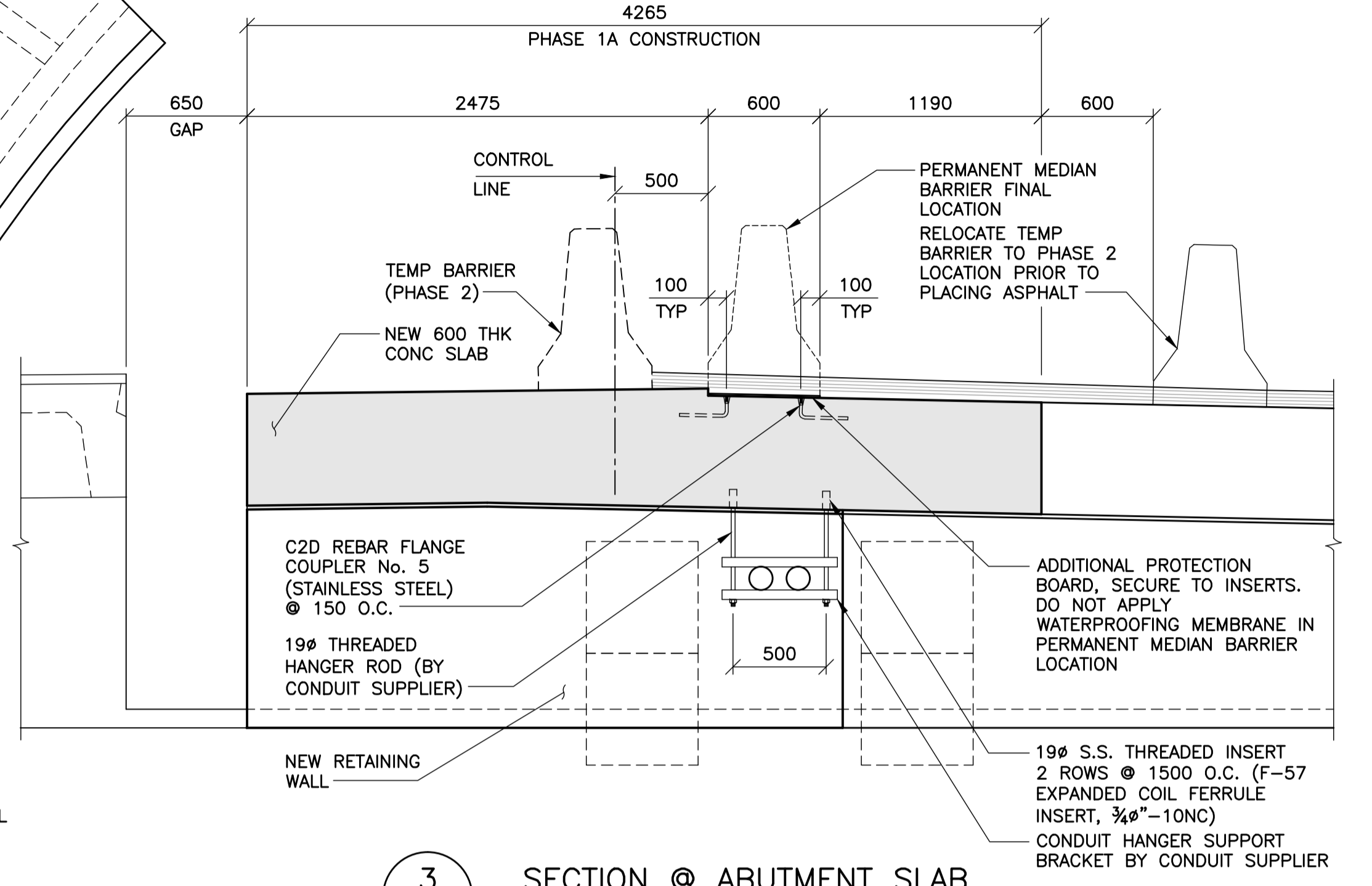


**1** PLAN - NORTH ABUTMENT PHASE 1A CONSTRUCTION  
1 : 75



**2** NORTH ELEVATION - PHASE 1A CONSTRUCTION  
1 : 75  
EXIST GIRDERS NOT SHOWN FOR CLARITY

**APGN**  
Certificate of Authorization  
Wardrop Engineering Inc.  
No. 195 Date: April 30, 2011

B.M. ELEV.	F.B.	<b>WARDROP</b> A TETRA TECH COMPANY DESIGNED BY S.Y. CHECKED BY R.H.W. DRAWN BY B.M. APPROVED BY R.H.W. HOR. SCALE: AS NOTED VERTICAL: AS NOTED 10.10.20	RELEASED FOR CONSTRUCTION DATE 11.02.16 ORIGINAL SIGNED 11.02.16 DATE 11.02.16 CONSULTANT DRAWING NO. 0900070502-DWG-S0026
00 ISSUED FOR TENDER	11.02.18	RHW	
NO. REVISIONS	DATE	BY	

**PROVINCE OF MANITOBA**  
ORIGINAL SIGNED 11.02.16  
W.R.  
HALDANE-WILSON  
REGISTERED PROFESSIONAL ENGINEER

**THE CITY OF WINNIPEG**  
PUBLIC WORKS DEPARTMENT  
ENGINEERING DIVISION

**OSBORNE STREET BRIDGE**  
REHABILITATION & RELATED WORKS

**NORTH ABUTMENT AND APPROACH SLAB**  
PHASE 1A CONSTRUCTION

CITY DRAWING NUMBER B109-11-031  
SHEET 26 OF 131

26