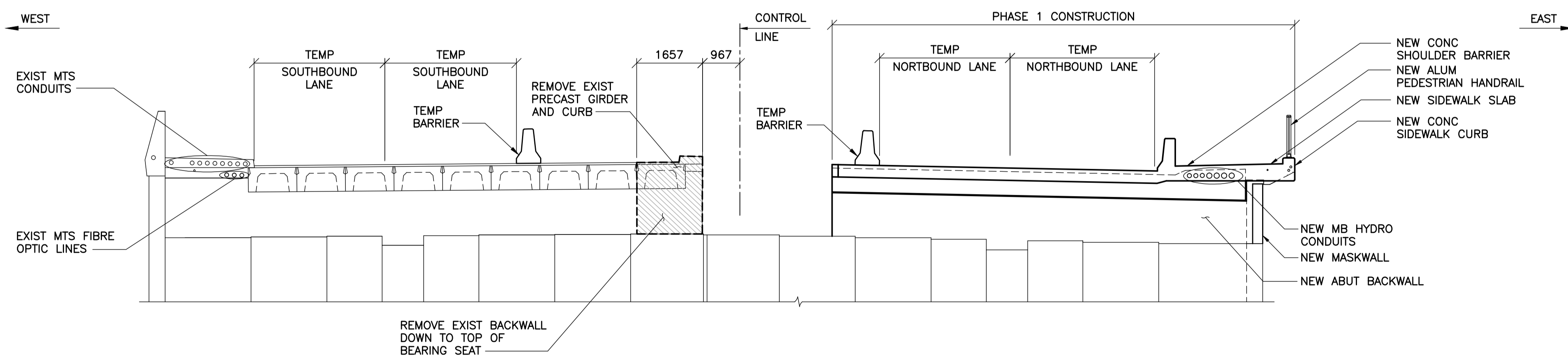


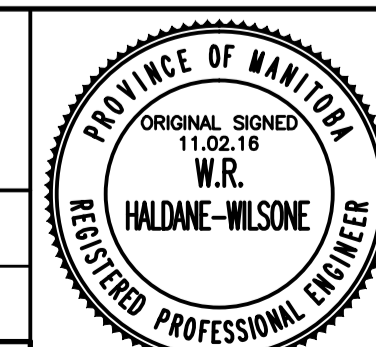
**1**  
PLAN - NORTH ABUTMENT PHASE 1A REMOVAL  
1 : 75



**2**  
NORTH ELEVATION - PHASE 1A REMOVAL  
1 : 75  
- EXIST GIRDERS NOT SHOWN FOR CLARITY



B.M. ELEV.		F.B.	
DESIGNED BY	S.Y.	CHECKED BY	R.H.W.
DRAWN BY	B.M.	APPROVED BY	R.H.W.
HOR. SCALE:	AS NOTED	RELEASED FOR CONSTRUCTION	DATE 11.02.16
VERTICAL:		ORIGINAL SIGNED	11.02.16
00 ISSUED FOR TENDER	11.02.18	RHW	
NO. REVISIONS	DATE	BY	
	10.10.20		



CONSULTANT DRAWING NO.  
0900070502-DWG-S0025

**THE CITY OF WINNIPEG**  
PUBLIC WORKS DEPARTMENT  
ENGINEERING DIVISION

**OSBORNE STREET BRIDGE**  
REHABILITATION & RELATED WORKS

CITY DRAWING NUMBER  
B109-11-030  
SHEET 25 OF 131

**NORTH ABUTMENT AND APPROACH SLAB**  
PHASE 1A REMOVAL

25