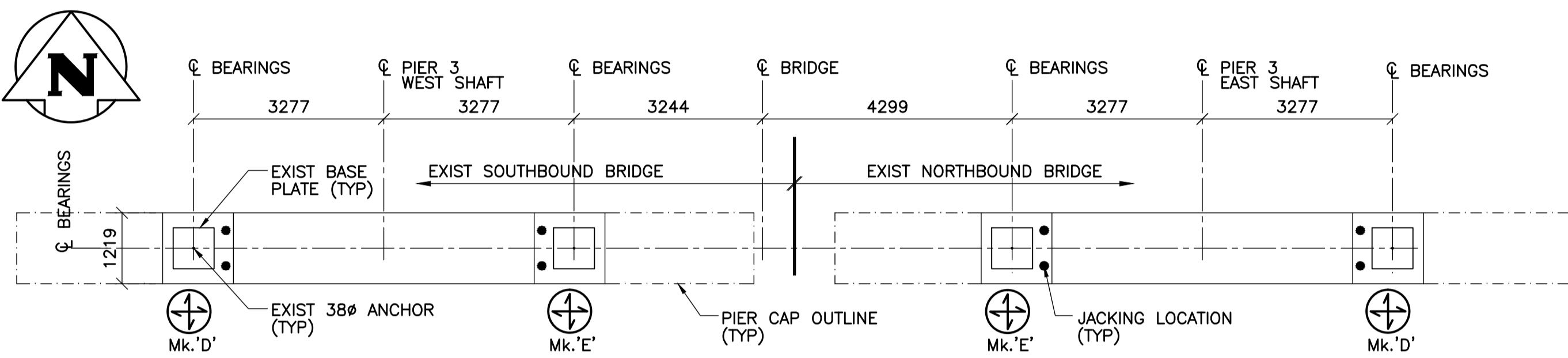
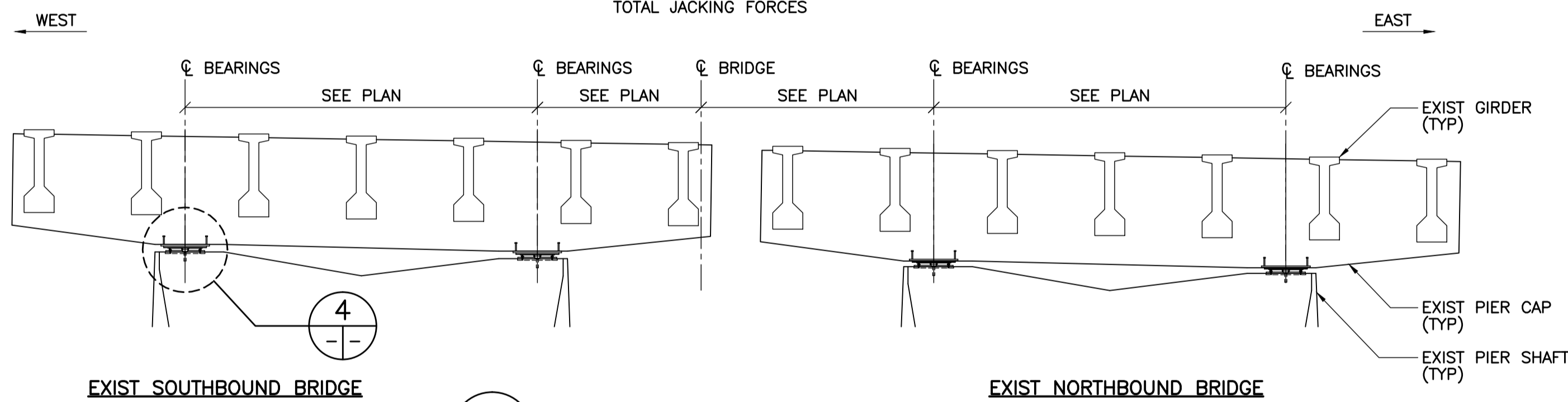


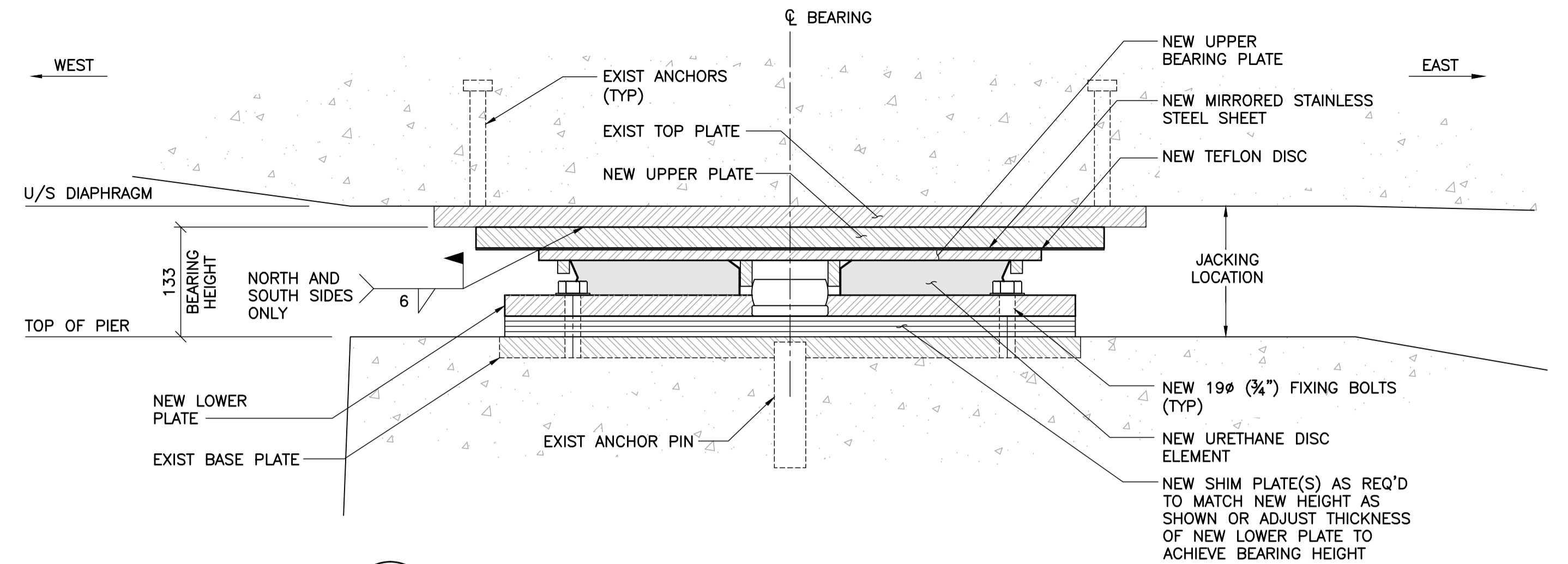
1 BEARING LAYOUT - PIER 1
 1 : 75
 - SHOWING BASE PLATE ON TOP OF PIER
 - MULTI DIRECTIONAL DISC BEARING
 - REFER TO SHEET 13 FOR TOTAL JACKING FORCES



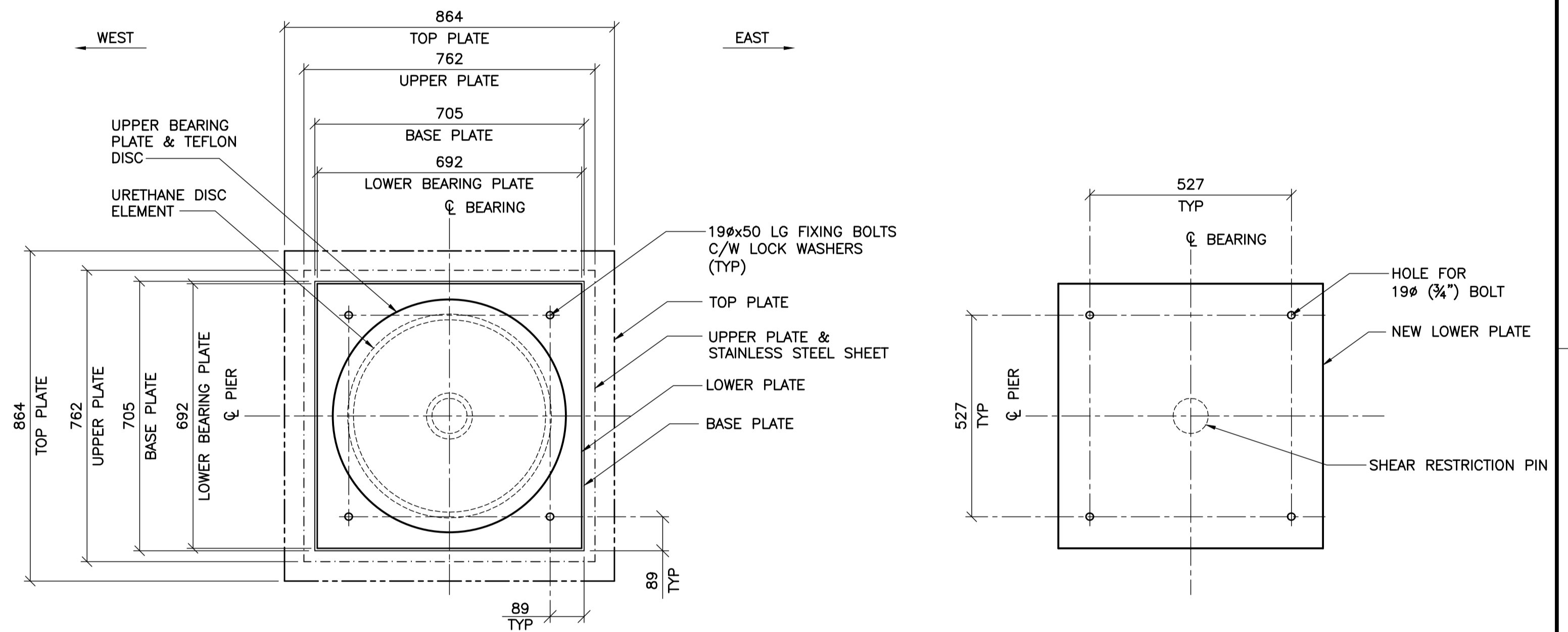
2 BEARING LAYOUT - PIER 3
 1 : 75
 - SHOWING BASE PLATE ON TOP OF PIER
 - MULTI DIRECTIONAL DISC BEARING
 - REFER TO SHEET 13 FOR TOTAL JACKING FORCES



3 ELEVATION PIER 1 & 3
 1 : 75
 - LOOKING NORTH

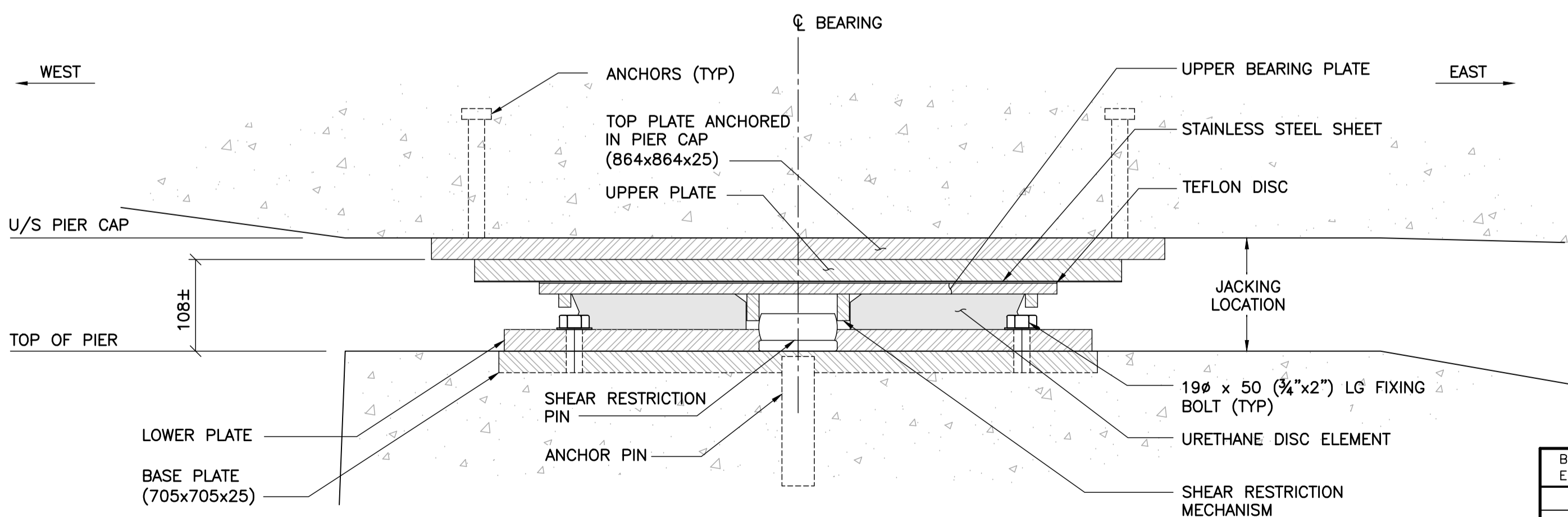


6 NEW MULTI DIRECTIONAL DISC BEARING - SECTION
 1 : 5
 - FIELD WELDING OF NEW LOWER PLATE TO EXISTING BASE PLATE MAY BE REQUIRED DEPENDING UPON ACTUAL BEARING SUPPLY OR AT THE DISCRETION OF THE CONTRACT ADMINISTRATOR



5 EXIST MULTI DIRECTIONAL DISC BEARING - PLAN
 1 : 10

7 BOLT PATTERN FOR NEW LOWER PLATE
 1 : 10
 - BEARING SUPPLIER TO UTILIZE EXIST BOLT PATTERN FOR NEW FIXING BOLTS AND BEARING DESIGN
 - OVERSIZE NEW FIXING BOLT HOLES BY 2mm IN NEW LOWER PLATE

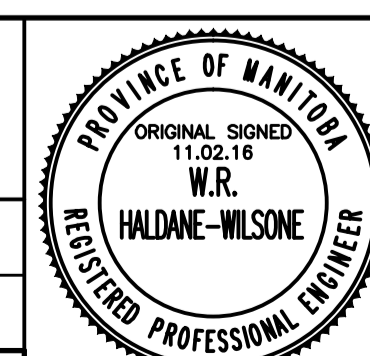


4 EXIST MULTI DIRECTIONAL DISC BEARING - SECTION
 1 : 5
 - U/S OF DIAPHRAGM TO BE RAISED 25mm PERMANENTLY
 - REMOVE EXISTING BEARINGS
 - DO NOT DAMAGE EXISTING TOP AND BASE PLATES
 - EXIST TOP PLATE AND BASE PLATE TO BE SHOT BLASTED AND COATED WITH 6 mil (0.152mm) OF ZINC METALIZING



B.M. ELEV.	F.B.	DESIGNED BY	CHECKED BY	DATE
		R.H.W.	E.F.S.	
		G.I.	R.H.W.	
00 ISSUED FOR TENDER		11.02.18	RHW	
NO. REVISIONS		DATE	BY	

WARDROP A TETRATECH COMPANY	
DESIGNED BY: R.H.W.	CHECKED BY: E.F.S.
DRAWN BY: G.I.	APPROVED BY: R.H.W.
HOR. SCALE: AS NOTED	RELEASED FOR CONSTRUCTION DATE: 11.02.16
VERTICAL: AS NOTED	ORIGINAL SIGNED: 11.02.16
DATE: 10.10.20	MATT CHISLETT, P. ENG. BRIDGE PROJECTS ENGINEER



THE CITY OF WINNIPEG PUBLIC WORKS DEPARTMENT ENGINEERING DIVISION		CITY DRAWING NUMBER B109-11-020
OSBORNE STREET BRIDGE REHABILITATION & RELATED WORKS		SHEET 15 OF 131
PIER 1 & 3 - BEARING DETAILS		15