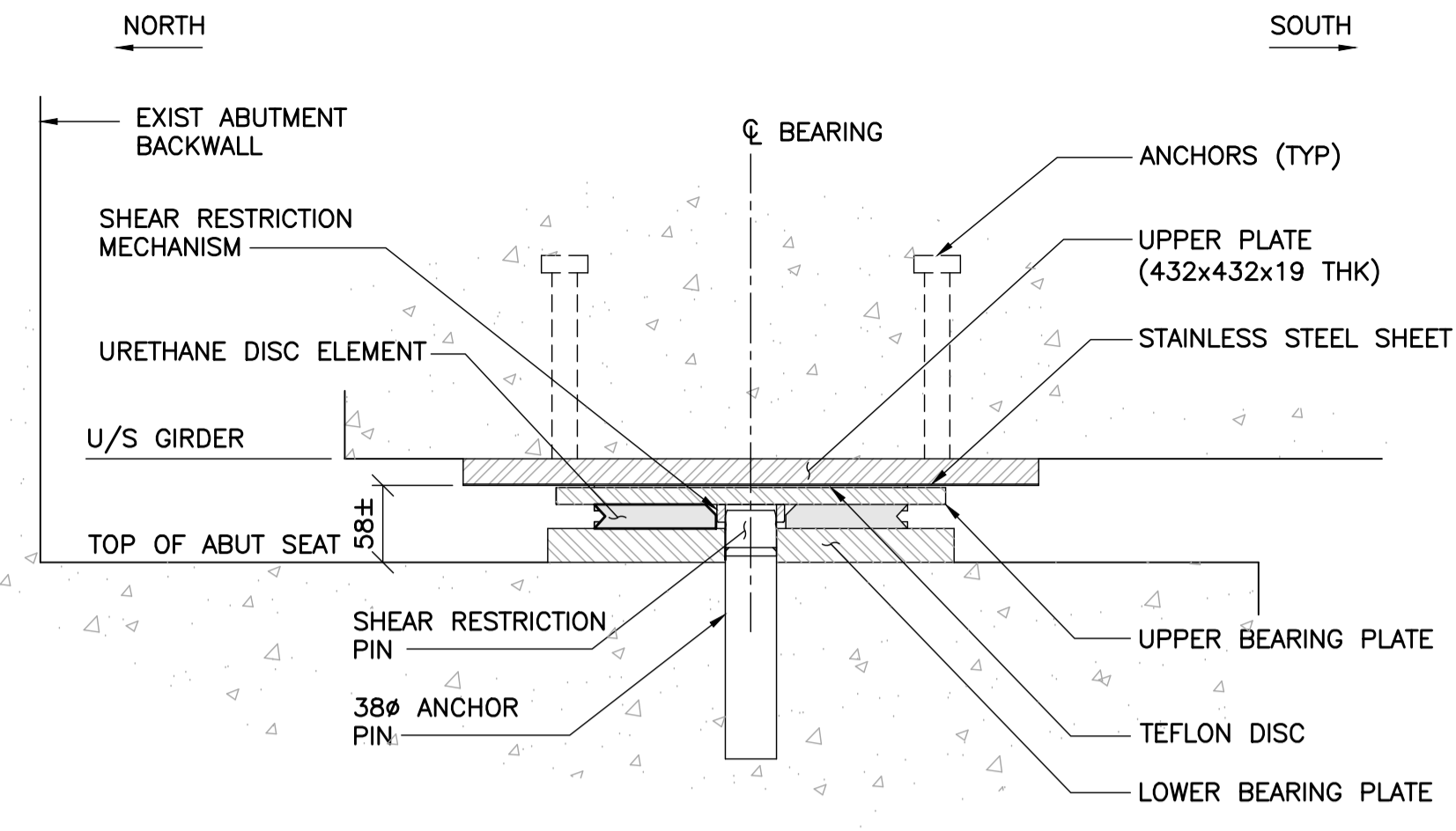
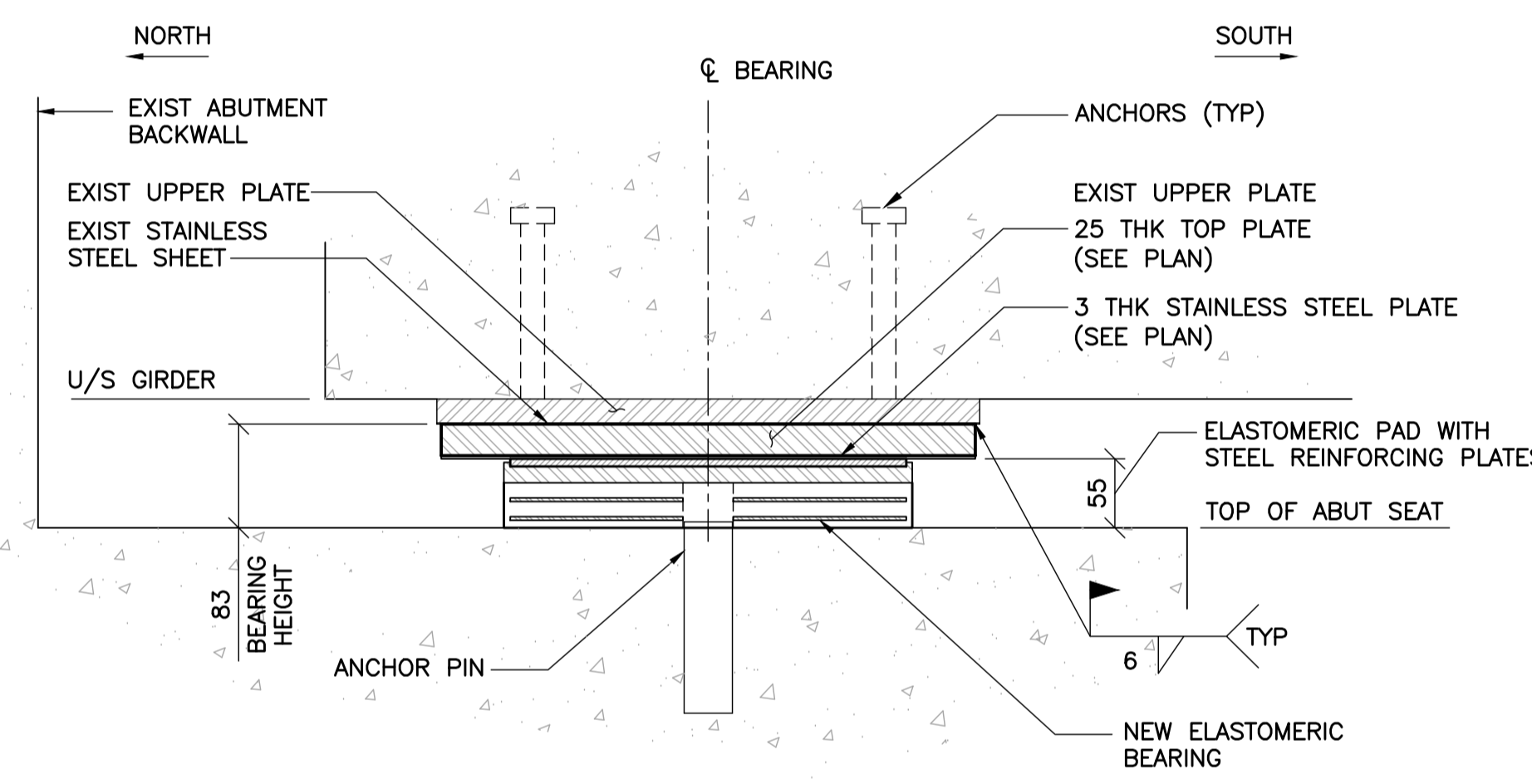


1
BEARING LAYOUT - NORTH ABUTMENT
1 : 75
- JACKING LOCATIONS SHOWN ●
- REFER TO SHEET 13 FOR TOTAL JACKING FORCE

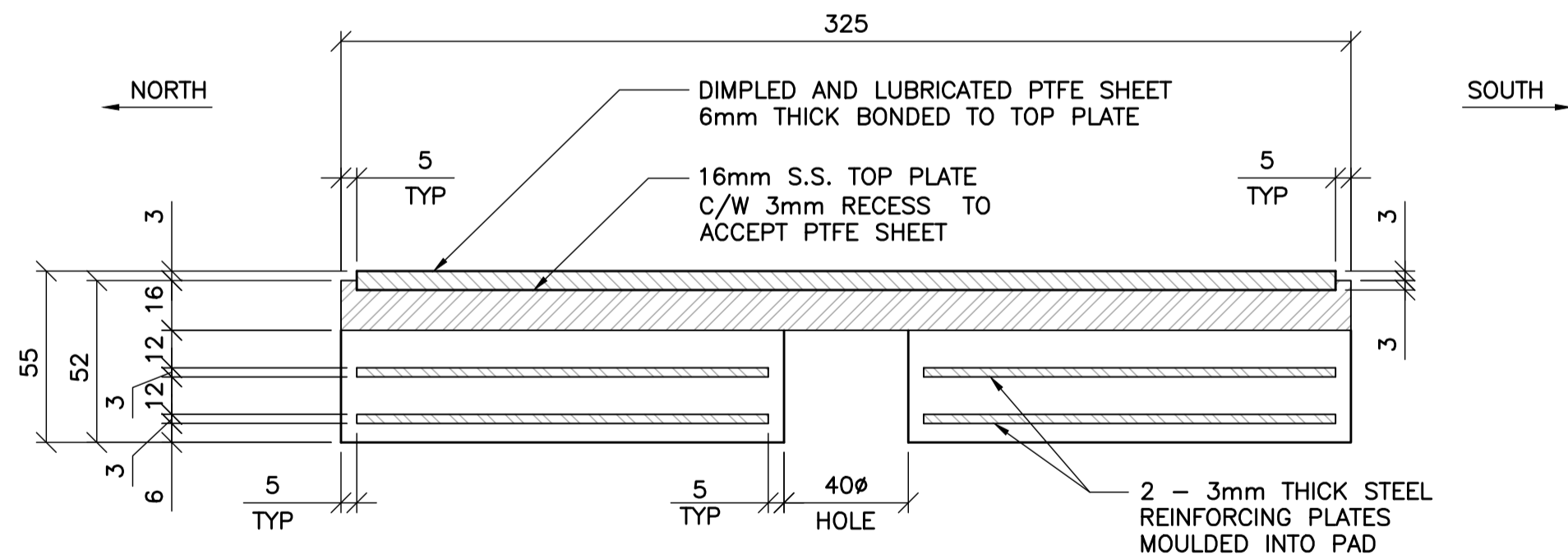
2
BEARING LAYOUT - SOUTH ABUTMENT
1 : 75
- JACKING LOCATIONS SHOWN ●
- REFER TO SHEET 13 FOR TOTAL JACKING FORCE



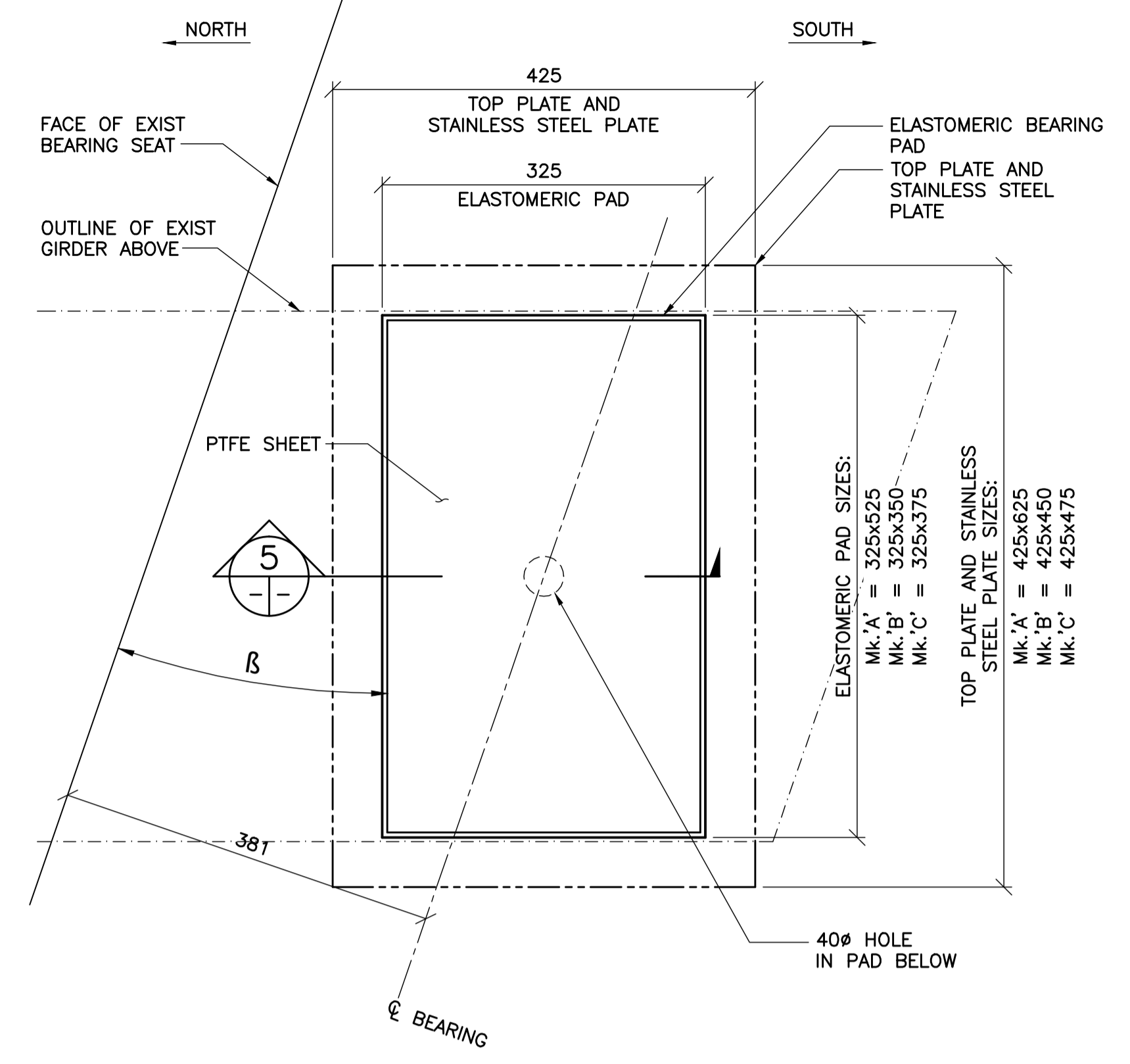
3
EXIST MULTI DIRECTIONAL BEARING - SECTION
1 : 5
- U/S OF GIRDER TO BE RAISED 25mm PERMANENTLY
- REMOVE EXISTING BEARING
- DO NOT DAMAGE UPPER PLATE
- EXIST UPPER PLATE AND ANCHOR PIN TO BE SHOT BLASTED AND COATED WITH 6 mil ZINC METALIZING
- EXIST ABUTMENT SEAT AND ANCHOR PIN TO BE SHOT BLASTED AND CLEANED PRIOR TO BEARING INSTALLATION



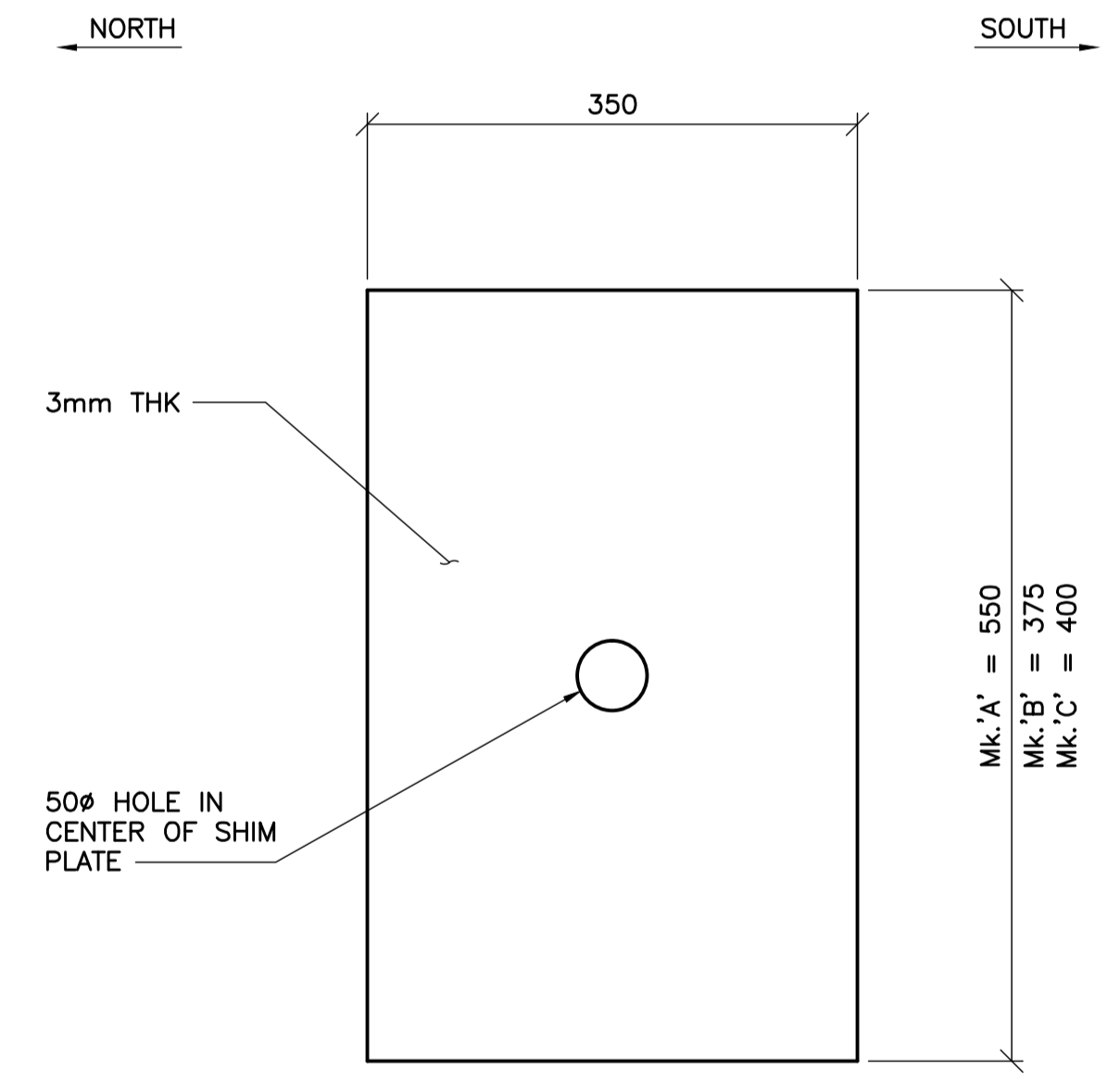
4
NEW MULTI DIRECTIONAL ELASTOMERIC BEARING - SECTION
1 : 5



5
NEW ELASTOMERIC BEARING PAD - SECTION
1 : 2

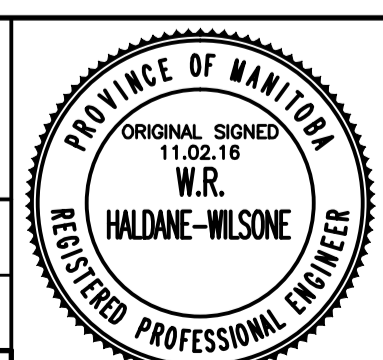


6
NEW MULTI DIRECTIONAL ELASTOMERIC BEARING - PLAN
1 : 5
- SOUTH ABUTMENT $b = 19'03"$
- NORTH ABUTMENT $b = 2'45"$



7
NEW STAINLESS STEEL SHIM PLATES
1 : 5
- MANUFACTURER TO PROVIDE ONE 3mm THICK STAINLESS STEEL SHIM PLATE FOR EACH BEARING. (SIZES AS NOTED)

B.M. ELEV.	F.B.	WARDROP A T E R A T E C H C O M P A N Y	
		DESIGNED BY R.H.W.	CHECKED BY E.F.S.
		DRAWN BY G.I.	APPROVED BY R.H.W.
		HOR. SCALE: AS NOTED	RELEASED FOR CONSTRUCTION DATE 11.02.16
		VERTICAL: AS NOTED	ORIGINAL SIGNED DATE 11.02.16
00	ISSUED FOR TENDER	11.02.18	RHW
NO.	REVISIONS	DATE	BY
		10.10.20	MATT CHISLETT, P.ENG BRIDGE PROJECTS ENGINEER



THE CITY OF WINNIPEG
PUBLIC WORKS DEPARTMENT
ENGINEERING DIVISION

OSBORNE STREET BRIDGE
REHABILITATION & RELATED WORKS

NORTH & SOUTH ABUTMENTS
BEARING DETAILS

CITY DRAWING NUMBER: B109-11-019
SHEET 14 OF 131

CONSULTANT DRAWING NO.: 0900070502-DWG-S0014

14