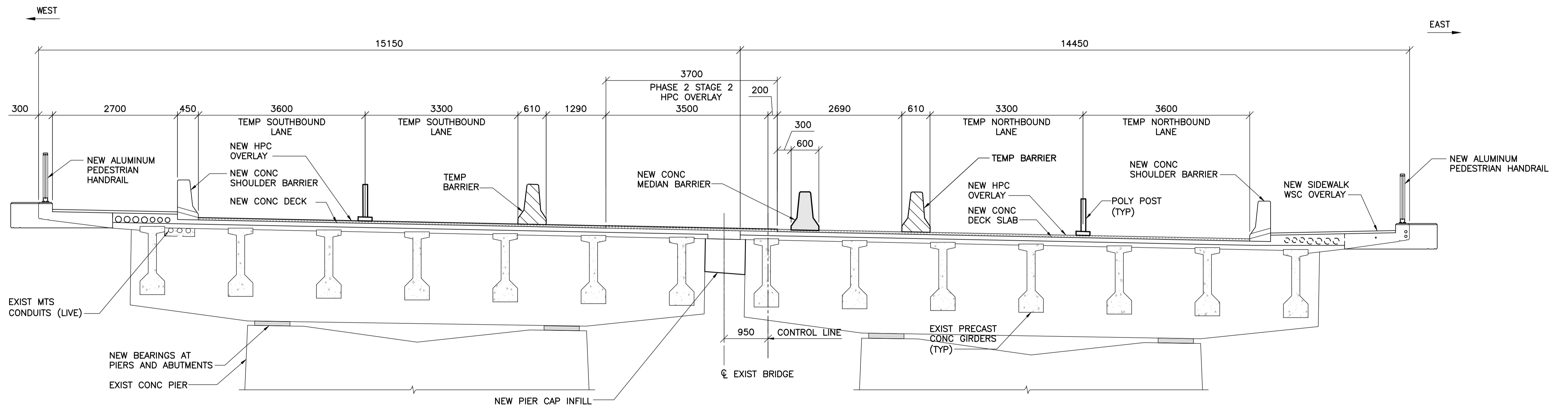


1 PHASE 2 - CONSTRUCTION 2012
1 : 50



2 PHASE 2A - CONSTRUCTION 2012
1 : 50

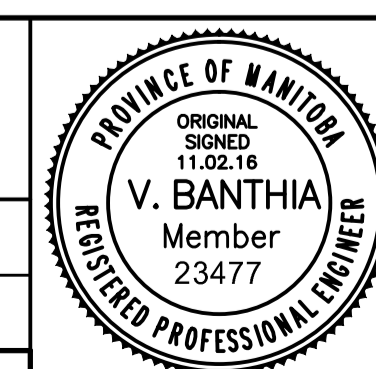
NOTES:

1. TEMPORARY FALSEWORK TO BE DESIGNED AND INSTALLED BY THE CONTRACTOR TO WITHSTAND A LOAD OF 15kN/m.
2. THE CONTRACTOR SHALL EXERCISE EXTREME CARE WHEN WORKING NEAR THE HYDRO AND MTS DUCTS.



B.M. ELEV.	F.B.		
00	ISSUED FOR TENDER	11.02.18	VB
NO.	REVISIONS	DATE	BY

WARDROP A TETRA TECH COMPANY	
DESIGNED BY S.Y.	CHECKED BY V.B.
DRAWN BY B.M.	APPROVED BY R.H.W.
HOR. SCALE: AS NOTED	RELEASED FOR CONSTRUCTION DATE 11.02.16
VERTICAL: AS NOTED	ORIGINAL SIGNED DATE 11.02.16
DATE 10.10.20	MATT CHISLETT, P. ENG. BRIDGE PROJECTS ENGINEER



THE CITY OF WINNIPEG PUBLIC WORKS DEPARTMENT ENGINEERING DIVISION	CITY DRAWING NUMBER B109-11-017
OSBORNE STREET BRIDGE REHABILITATION & RELATED WORKS	SHEET 12 OF 131
CONSTRUCTION STAGING PHASE 2 & PHASE 2A CONSTRUCTION - 2012	12