

DECK DRAINS - BILL OF MATERIALS

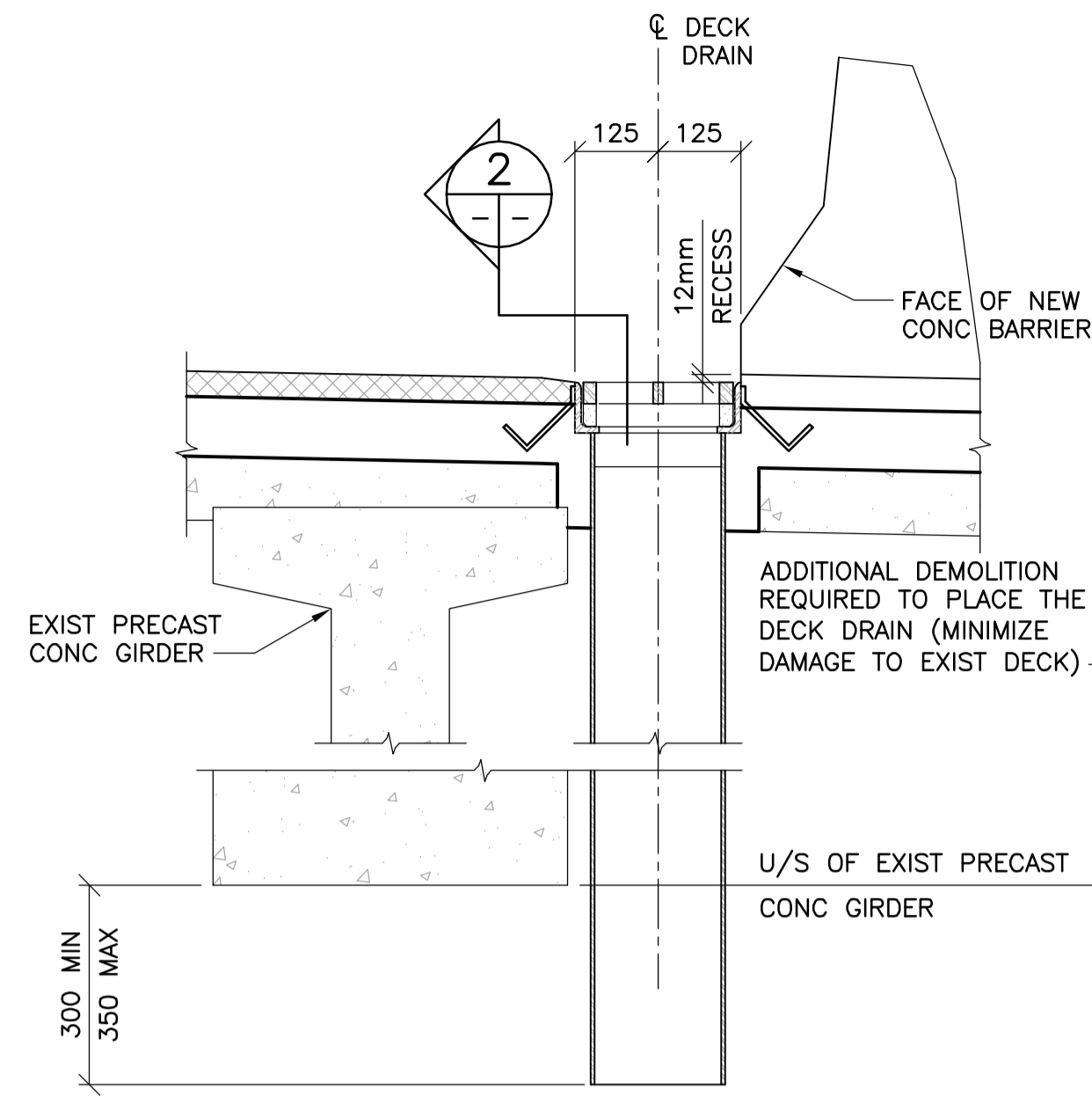
No.	DESCRIPTION	SIZE	COMPONENT MASS	MASS PER UNIT	TOTAL MASS
11	DECK DRAIN Mk. "D1" (COMPLETELY GALV) EACH UNIT TO BE FABRICATED FROM:				1134.98
	ANGLES FRAME	1 - L76x35x9.5 CUT FROM L76x76x9.5, SEE DETAIL	9.60	9.60	
	RECTANGULAR STEEL PIPE	1 - HSS203x203x6.4, 1750 LONG	65.98	65.98	
	TOP PART OF RECTANGULAR STEEL PIPE	1 - 6.4 PLATE, SEE DETAIL	9.62	9.62	
	DRAIN GRATING	1 - SEE DETAIL	15.71	15.71	
	NELSON ANCHOR Mk. "S1"	10 - 25x6 PLATE, SEE DETAIL	0.227	2.27	
				103.18	
6	DECK DRAIN Mk. "D2" (COMPLETELY GALV) EACH UNIT TO BE FABRICATED FROM:				688.2
	ANGLES FRAME	1 - L76x35x9.5 CUT FROM L76x76x9.5, SEE DETAIL	9.60	9.60	
	RECTANGULAR STEEL PIPE	1 - HSS203x203x6.4, 1800 LONG	67.87	67.87	
	TOP PART OF RECTANGULAR STEEL PIPE	1 - 6.4 PLATE, SEE DETAIL	19.25	19.25	
	DRAIN GRATING	1 - SEE DETAIL	15.71	15.71	
	NELSON ANCHOR Mk. "S1"	7 - 25x6 PLATE, SEE DETAIL ON SHEET 63	0.227	1.59	
	NELSON ANCHOR Mk. "S2"	3 - 25x6 PLATE, SEE DETAIL	0.227	0.68	
				114.70	

NOTES:

- QUANTITIES SHOWN ARE BOTH LANES (NORTHBOUND AND SOUTHBOUND).
- DECK DRAINS AND GRATING ARE HOT-DIP GALVANIZED AFTER FABRICATION.
- GALVALLOY APPLIED TO FIELD WELDS AND AREAS OF DAMAGED GALVANIZING.

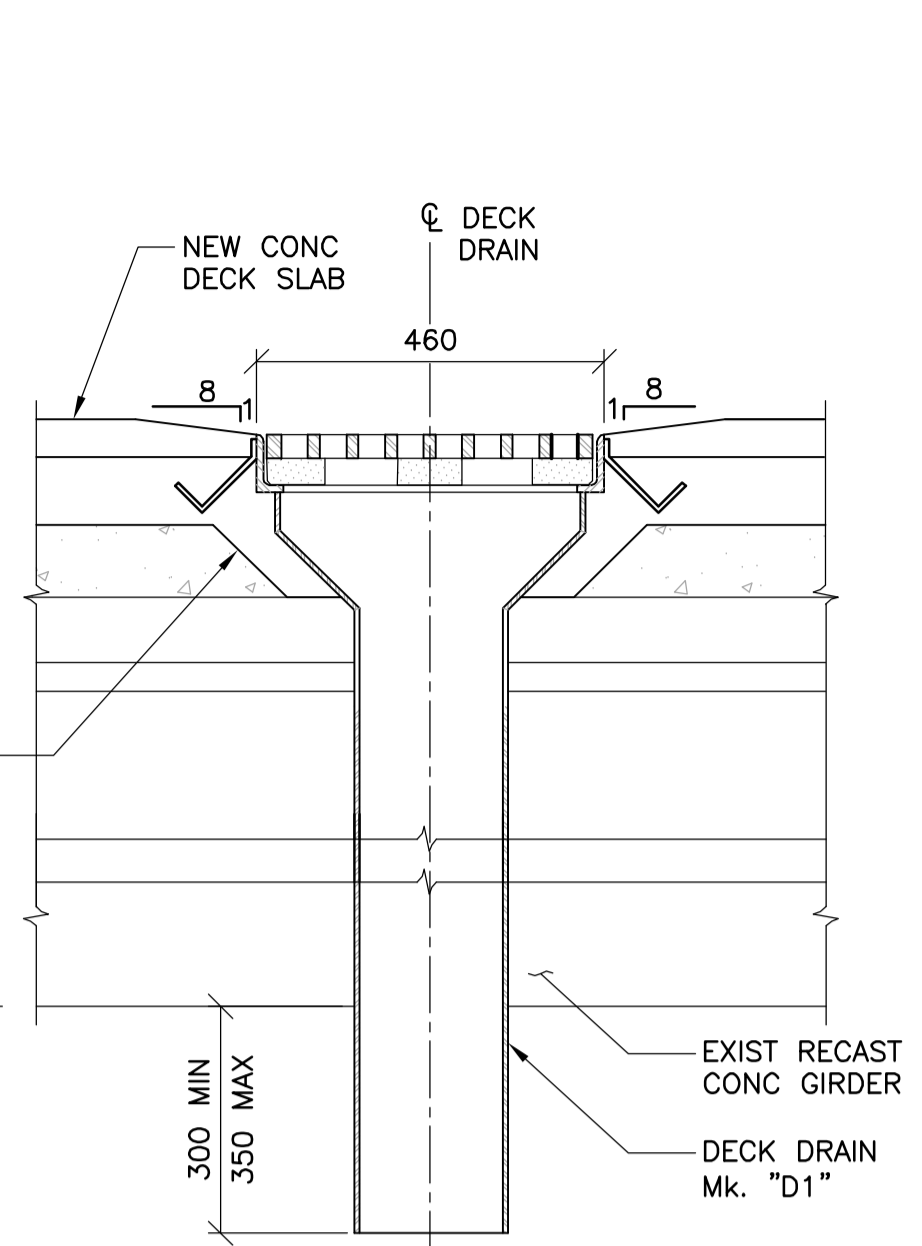
ERECTION NOTES

- BOTH DRAIN UNITS SHALL BE ERECTED BEFORE PLACING ANY REINFORCING STEEL ON THE DECK SLAB.
- AT EACH DRAIN UNIT TWO MAIN REINFORCING BAR & ONE DISTRIBUTION REINFORCING BAR IN TOP & BOTTOM LAYER WILL BE REQUIRED TO BE CUT WITHIN ONE INCH OF THE DRAIN.
- THE CONTRACTOR SHALL NOT DO ANY CUTTING OR BENDING WITHOUT THE CONTRACT ADMINISTRATOR'S APPROVAL FOR LAYOUT OF DECK DRAINS, SEE SHEETS 60 & 74.



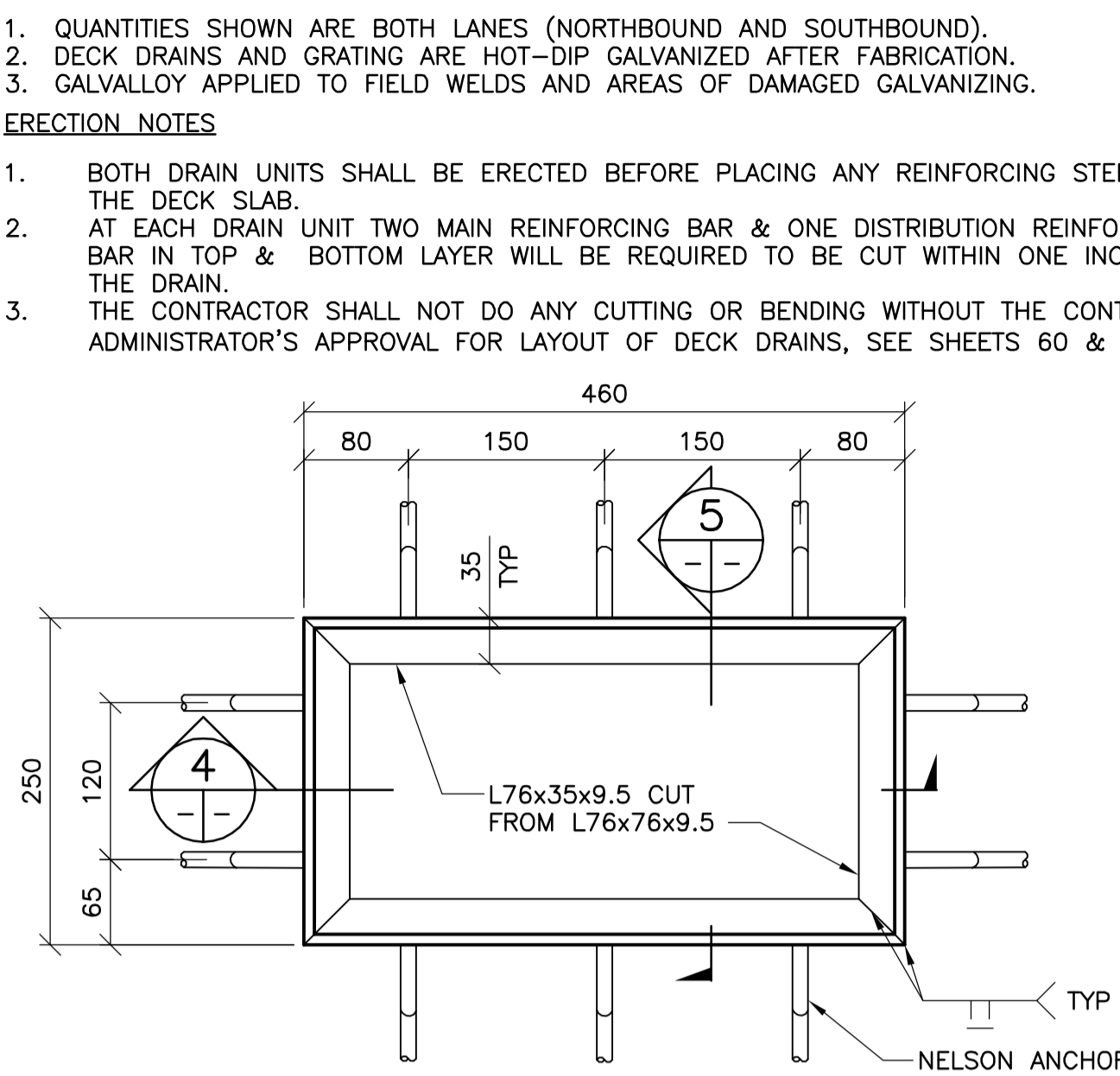
1 DECK DRAIN Mk. "D1"

- 1 : 10
- REFER TO SHEETS 60 AND 74 FOR LOCATIONS
 - 1 LOCATION ALONG MEDIAN BARRIER
 - 8 LOCATIONS ALONG EAST CONC SHOULDER BARRIER
 - 2 LOCATIONS ALONG WEST CONC SHOULDER BARRIER



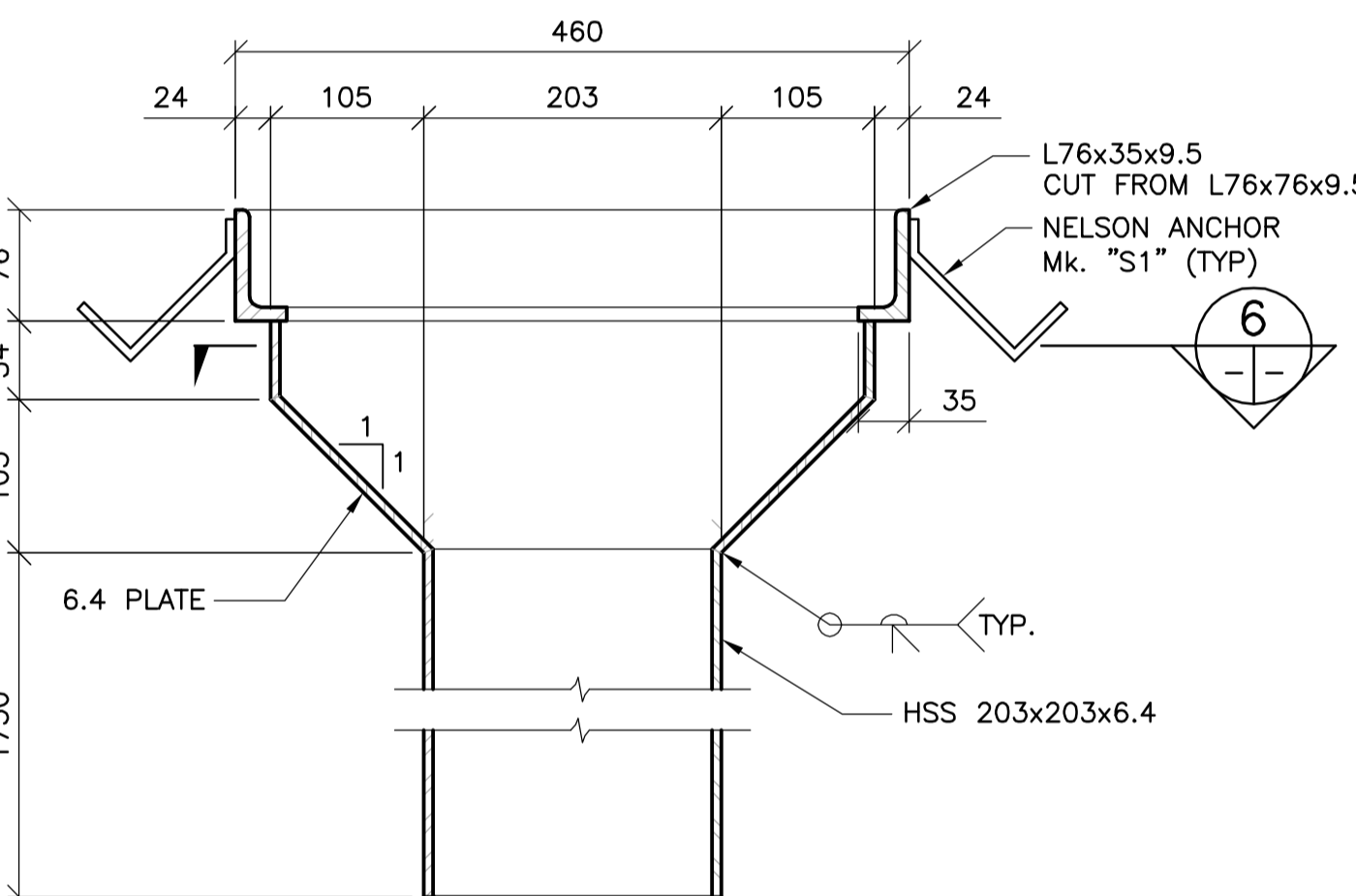
2 SECTION

1 : 10



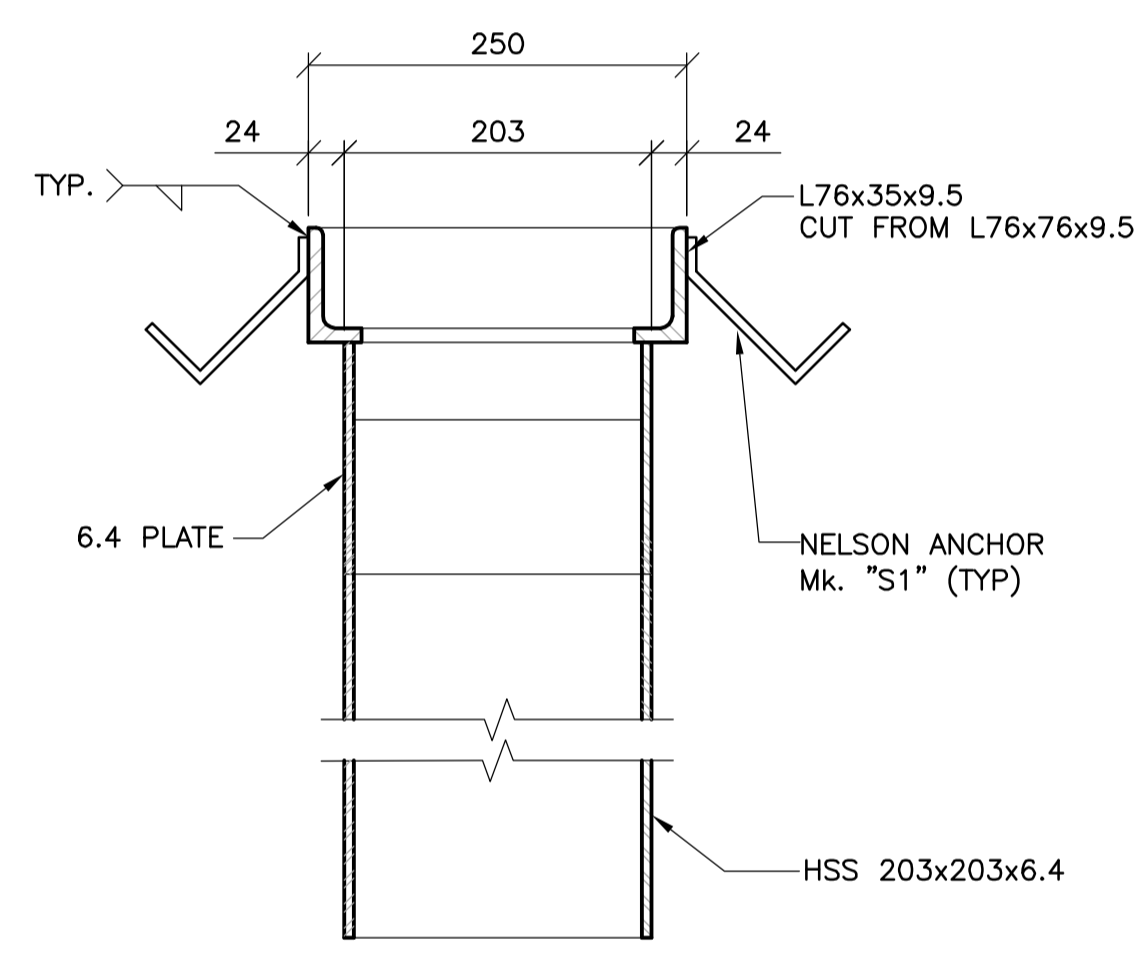
3 PLAN - DECK DRAIN Mk. "D1"

1 : 5



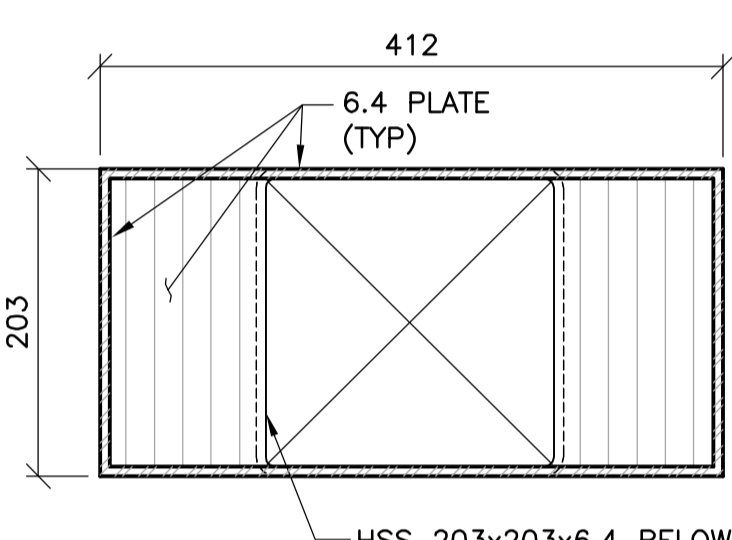
4 SECTION

1 : 5



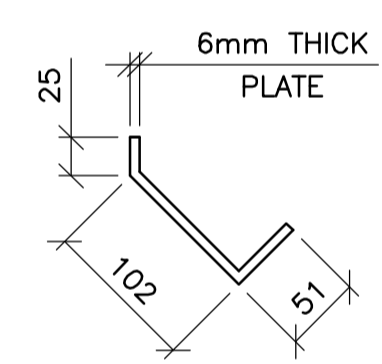
5 SECTION

1 : 5



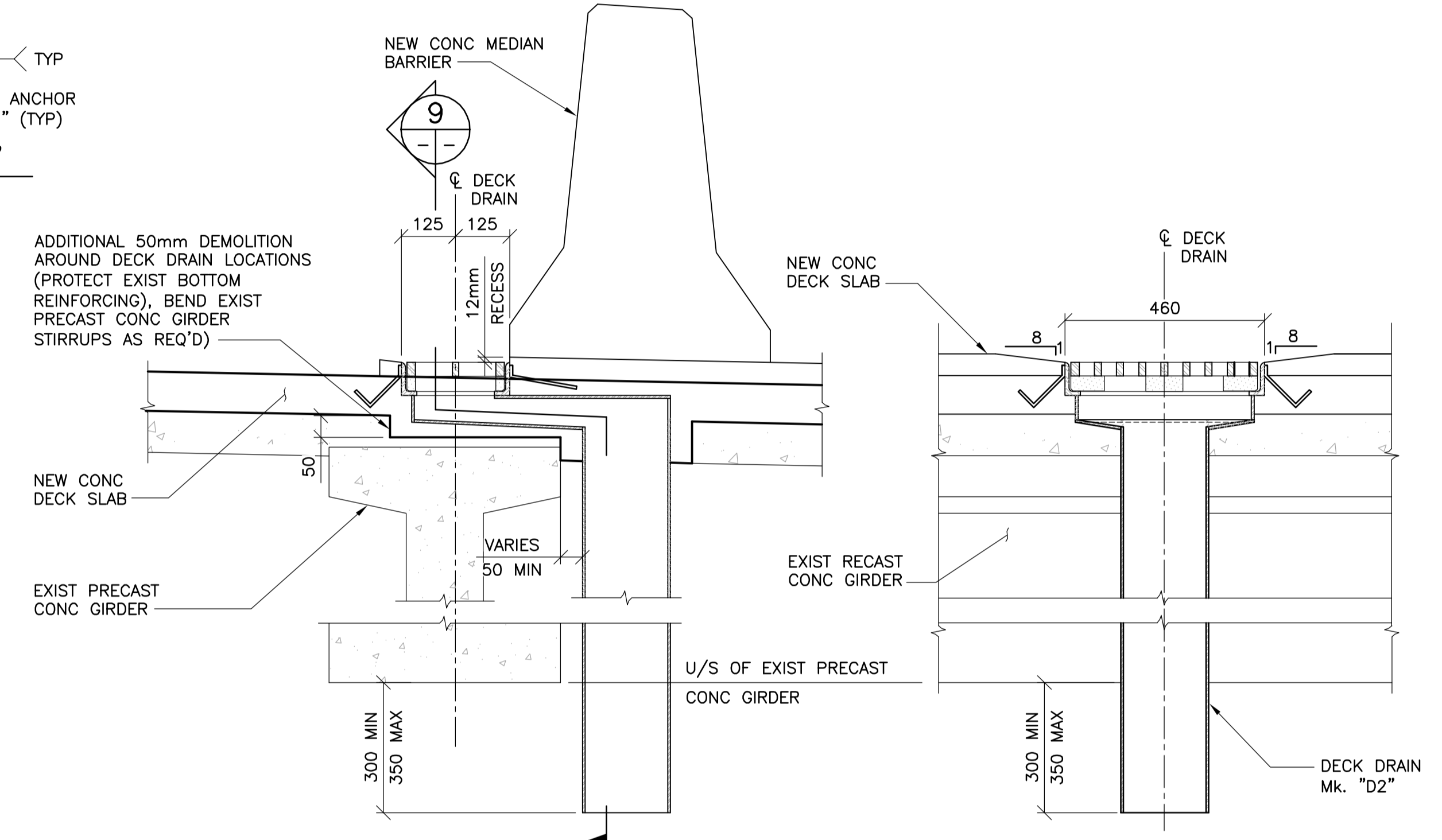
6 SECTION

1 : 5



7 NELSON ANCHOR Mk. "S1"

1 : 5



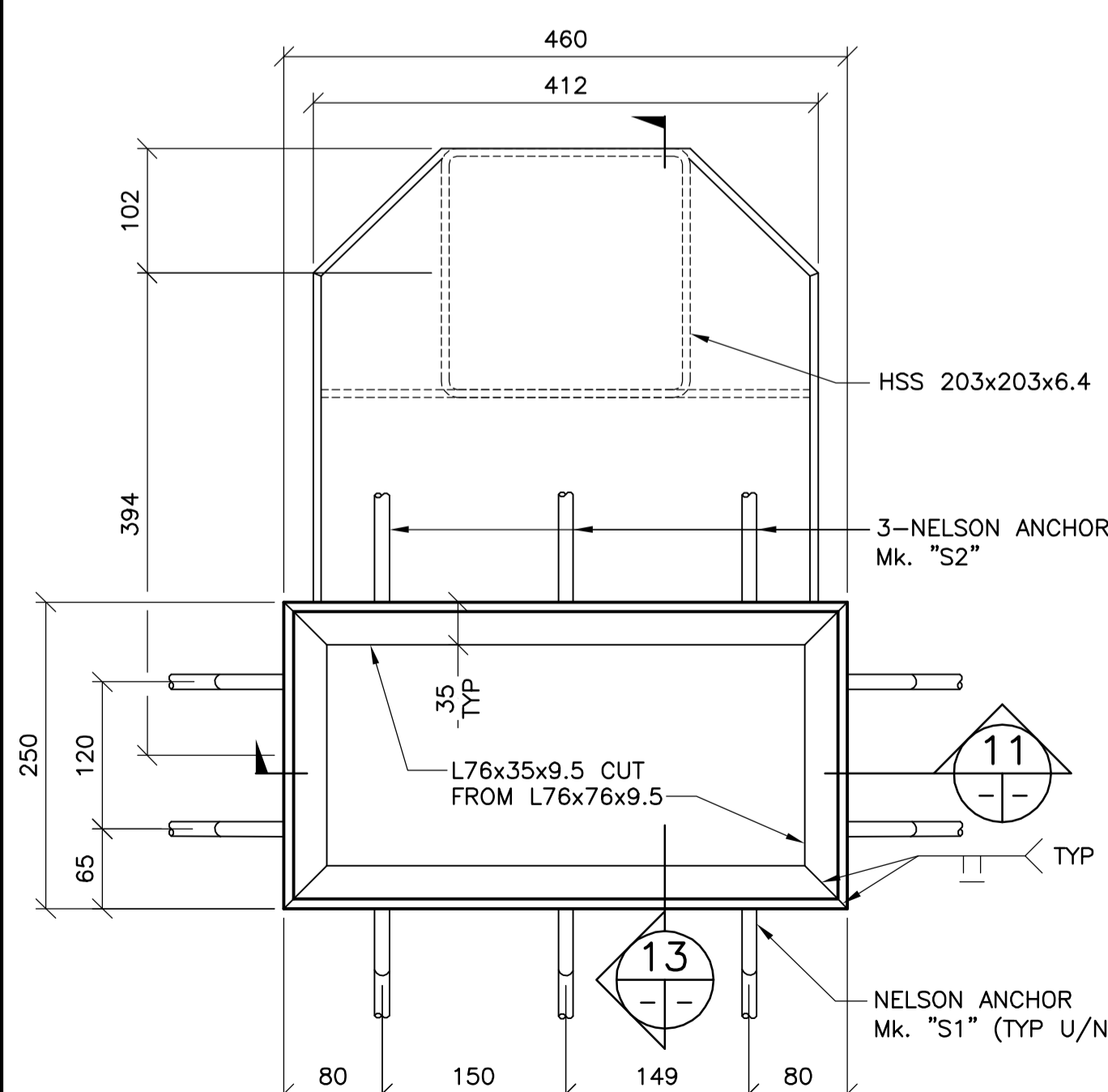
8 DECK DRAIN Mk. "D2"

1 : 10

- REFER TO SHEETS 60 AND 74 FOR LOCATIONS
- 6 LOCATIONS ALONG MEDIAN BARRIER

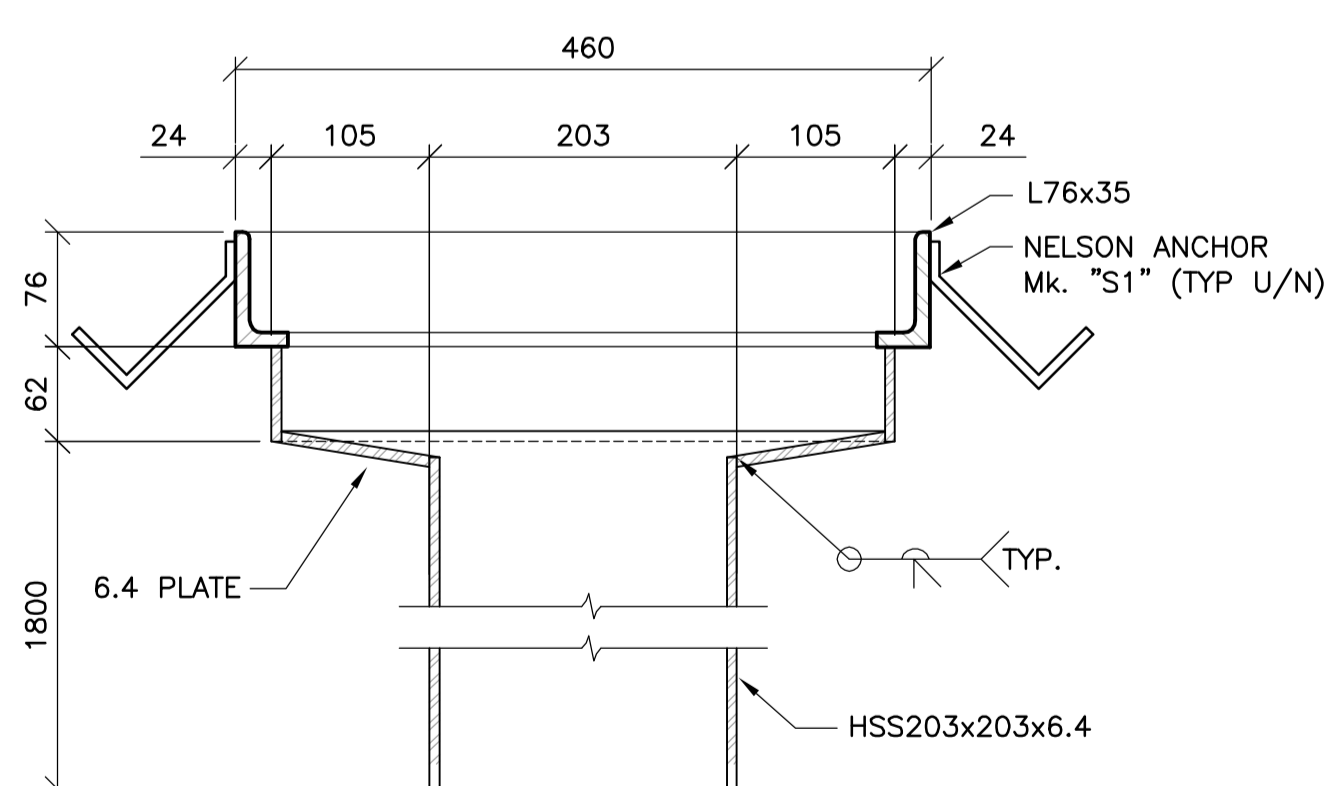
9 SECTION

1 : 10



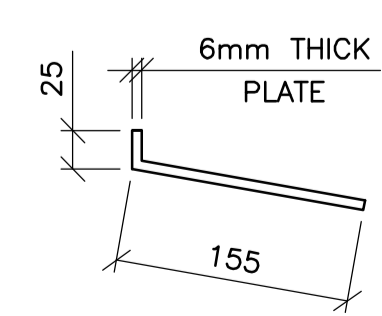
10 PLAN - DECK DRAIN Mk. "D2"

1 : 5



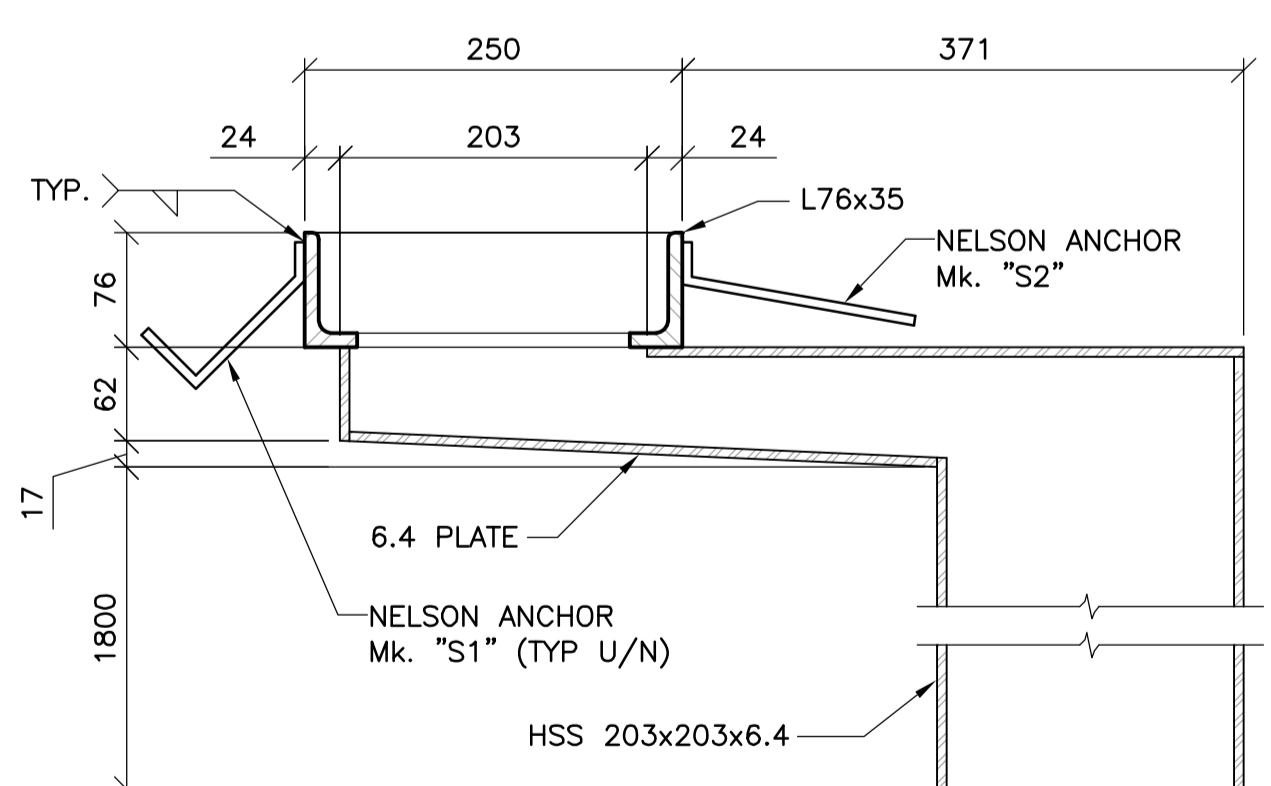
11 SECTION

1 : 5



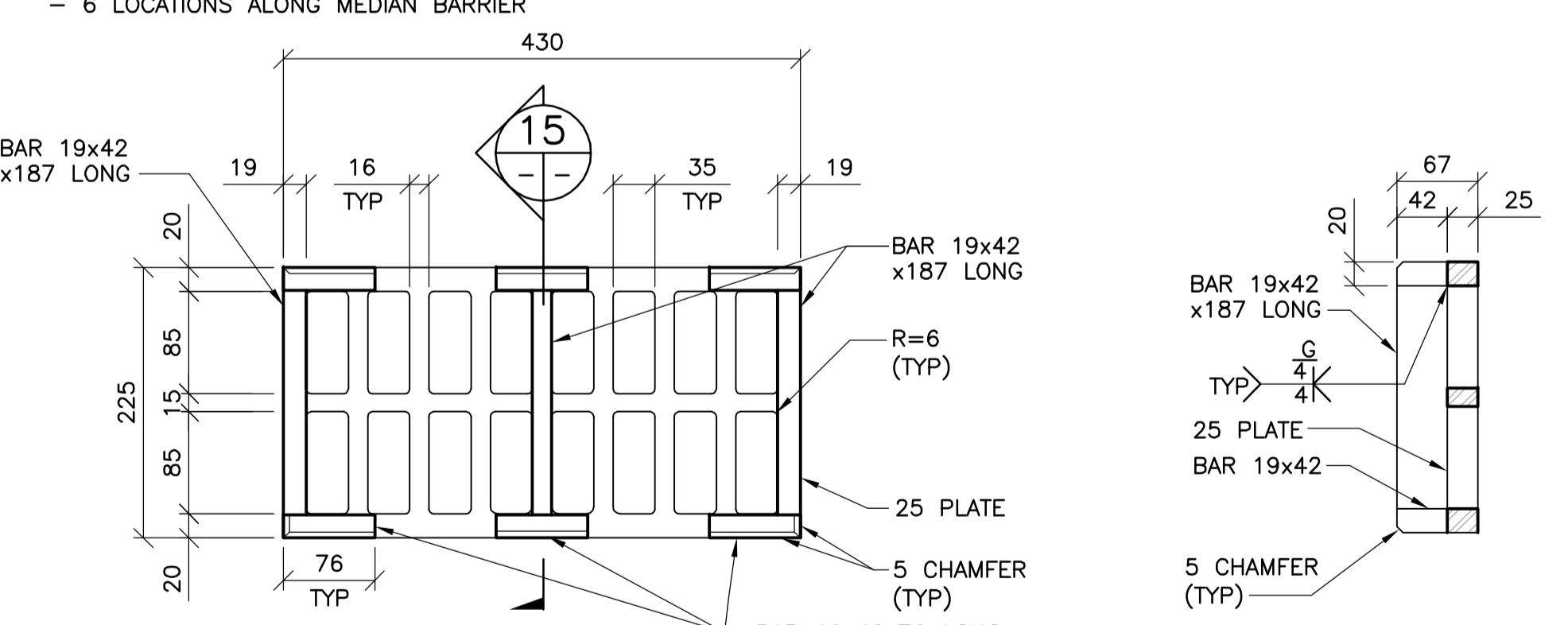
12 NELSON ANCHOR Mk. "S2"

1 : 5



13 SECTION

1 : 5



14 GRATING DETAIL

1 : 5

15 SECTION

1 : 5



B.M. ELEV.	F.B.	DATE	BY
		11.03.07	EFS
		10.10.13	

WARDROP
ATETRA TECH COMPANY

DESIGNED BY: V.B.	CHECKED BY: E.F.S.
DRAWN BY: C.T.	APPROVED BY: R.H.W.
HOR. SCALE: AS NOTED	RELEASED FOR CONSTRUCTION DATE: 11.03.07
VERTICAL: AS NOTED	ORIGINAL SIGNED: 11.03.07

CONSULTANT DRAWING NO. 0900070502-DWG-S0063

ORIGINAL SIGNED 11.03.07

E.F.G. SHEHATA
Member 23439

THE CITY OF WINNIPEG
PUBLIC WORKS DEPARTMENT
ENGINEERING DIVISION

OSBORNE STREET BRIDGE
REHABILITATION & RELATED WORKS

DECK DRAIN DETAILS

CITY DRAWING NUMBER: B109-11-068
SHEET 63 OF 131

94