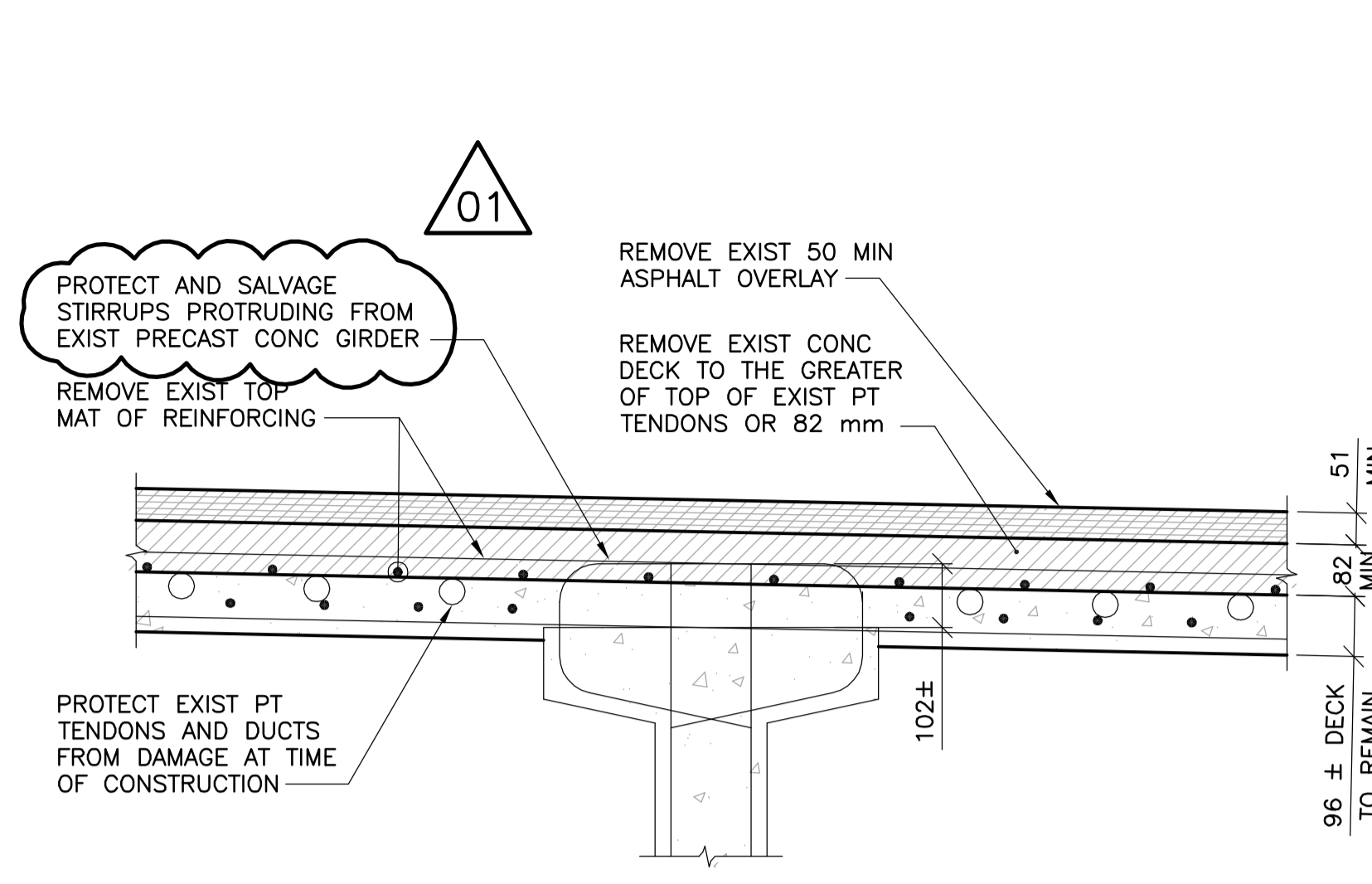
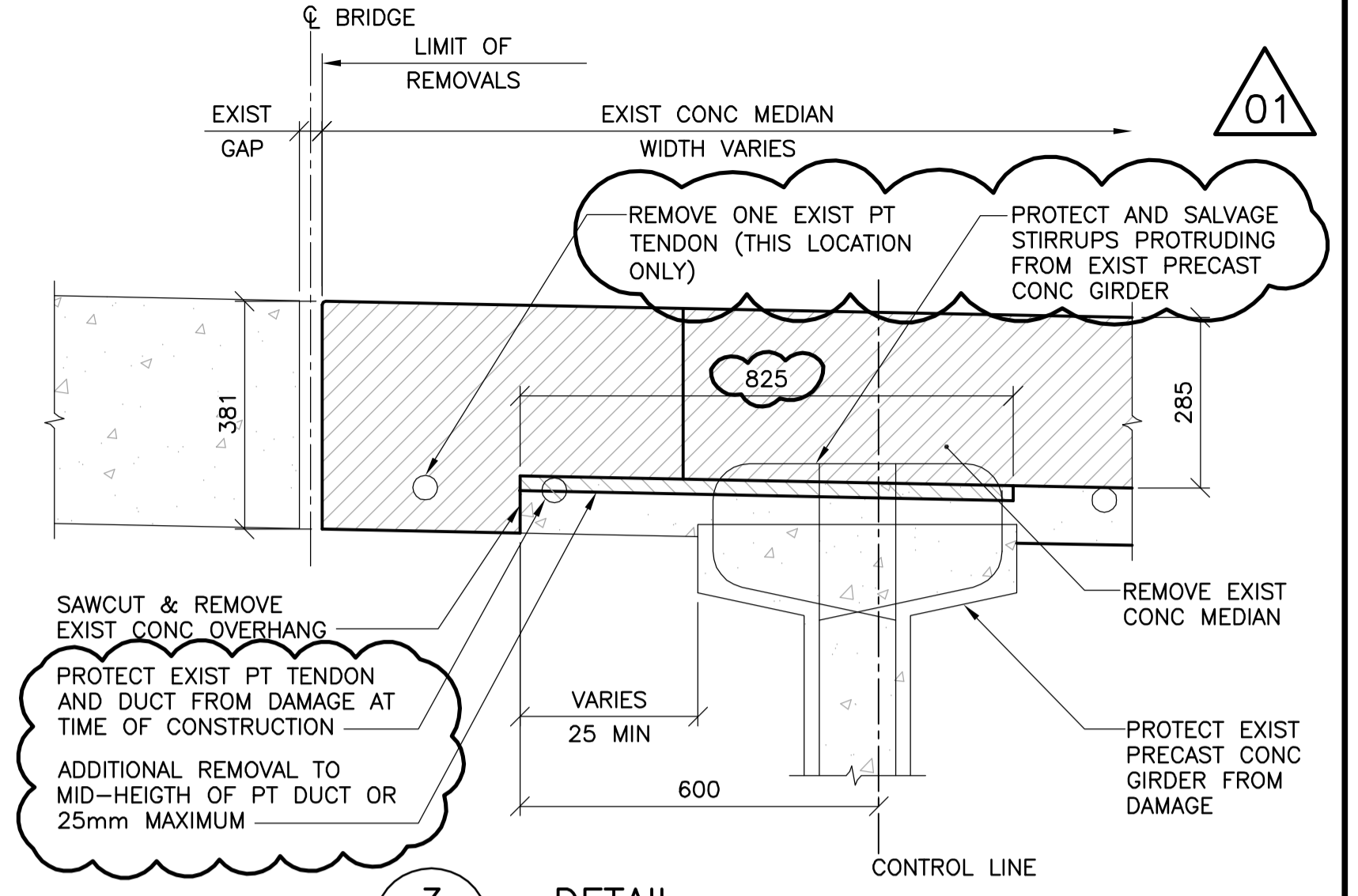


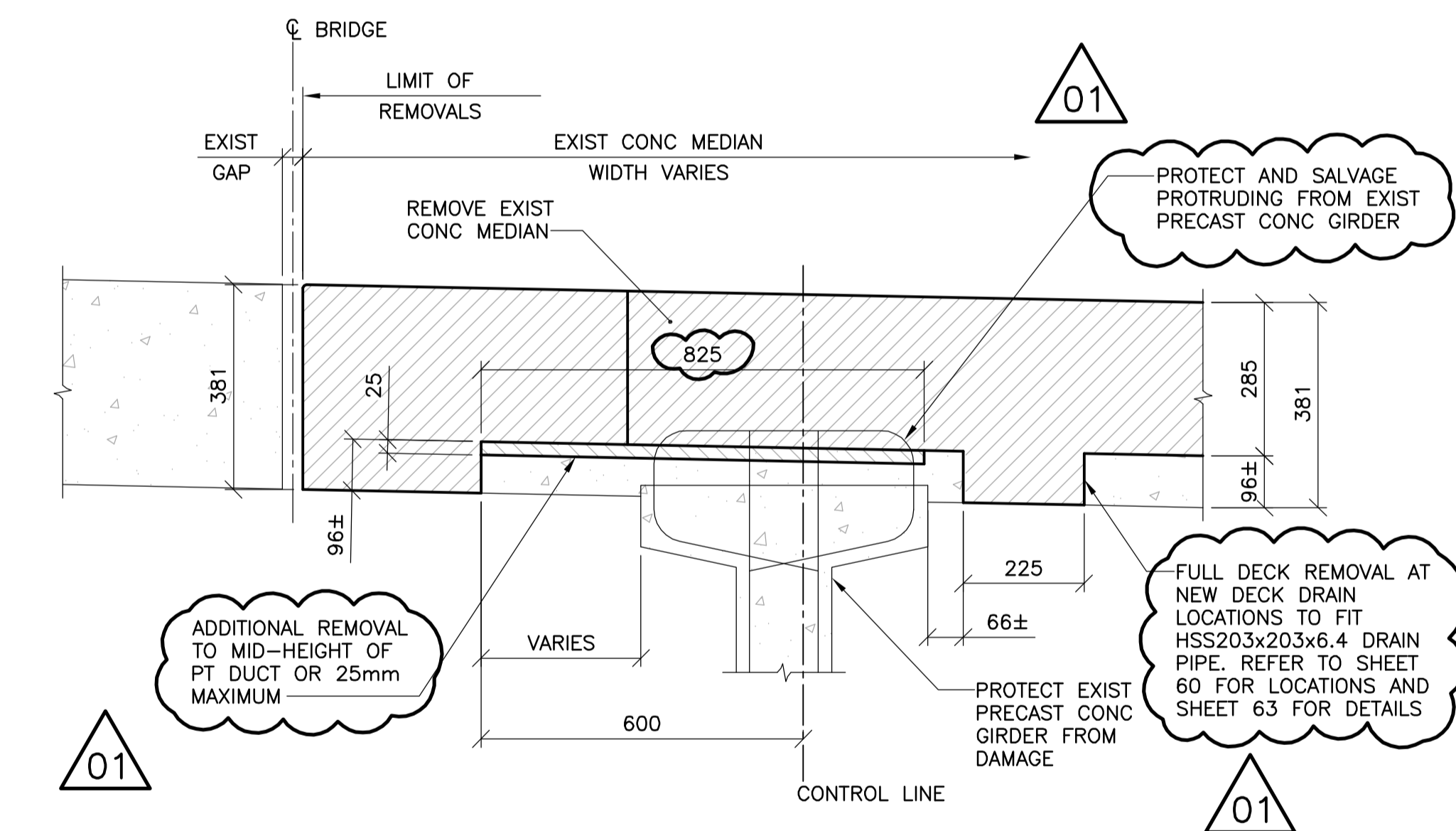
**1 DETAIL**  
56 | 57  
1 : 10



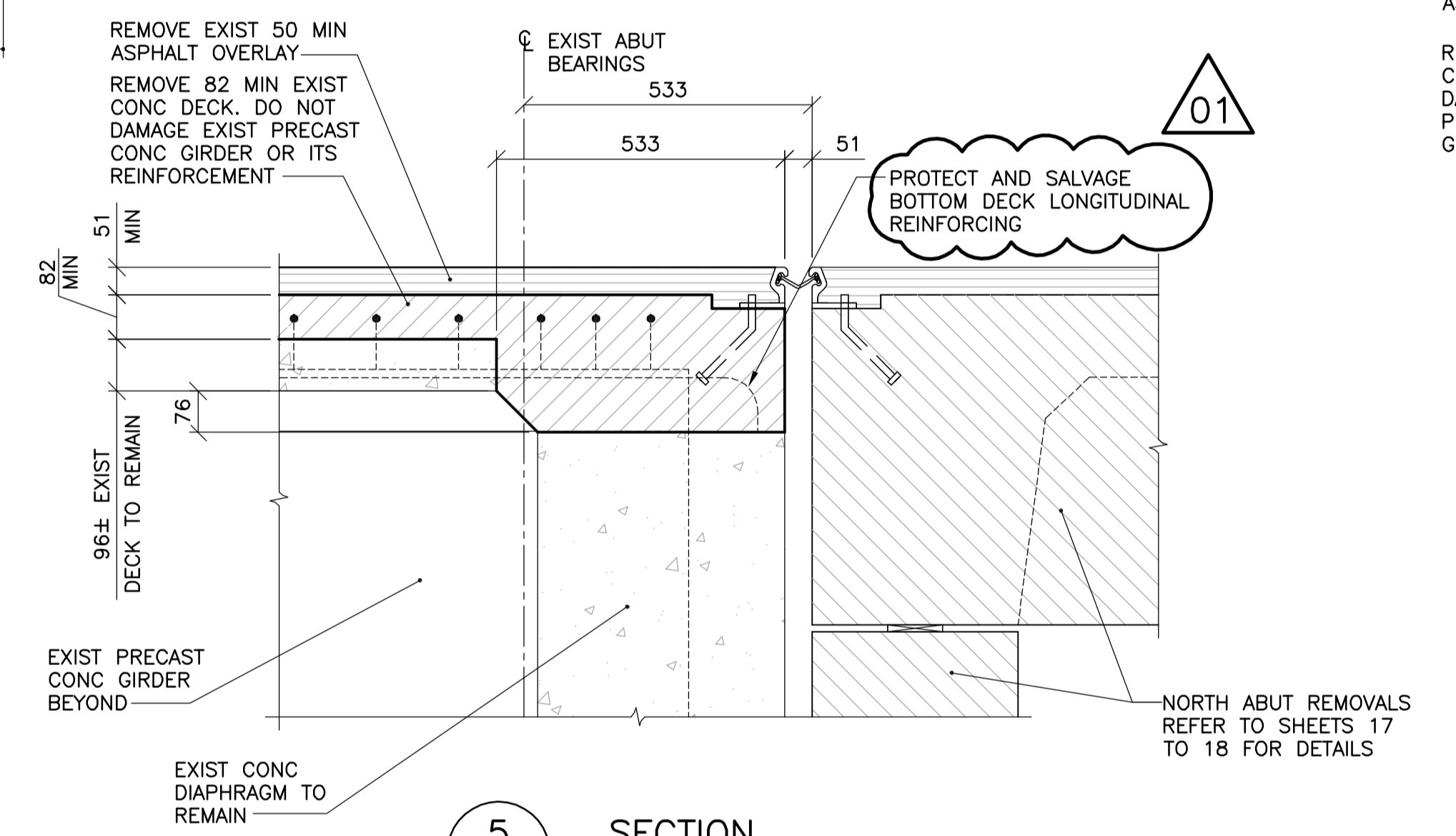
**2 DETAIL**  
56 | 57  
1 : 10  
\* ENSURE THAT CONCRETE REMOVAL IS SUFFICIENT TO COMPLETELY REMOVE TOP MAT OF EXIST REINFORCING



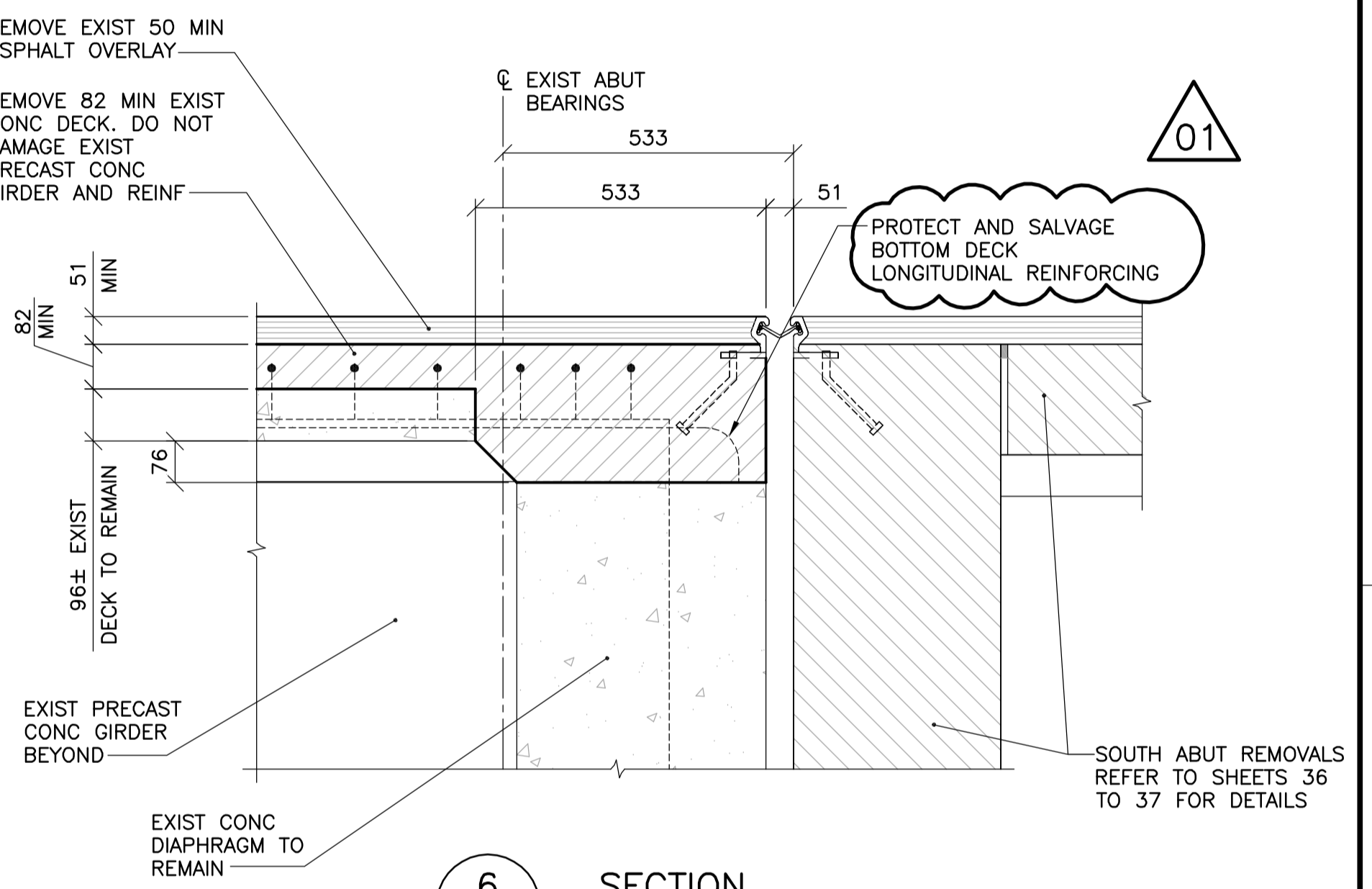
**3 DETAIL**  
56 | 57  
1 : 10



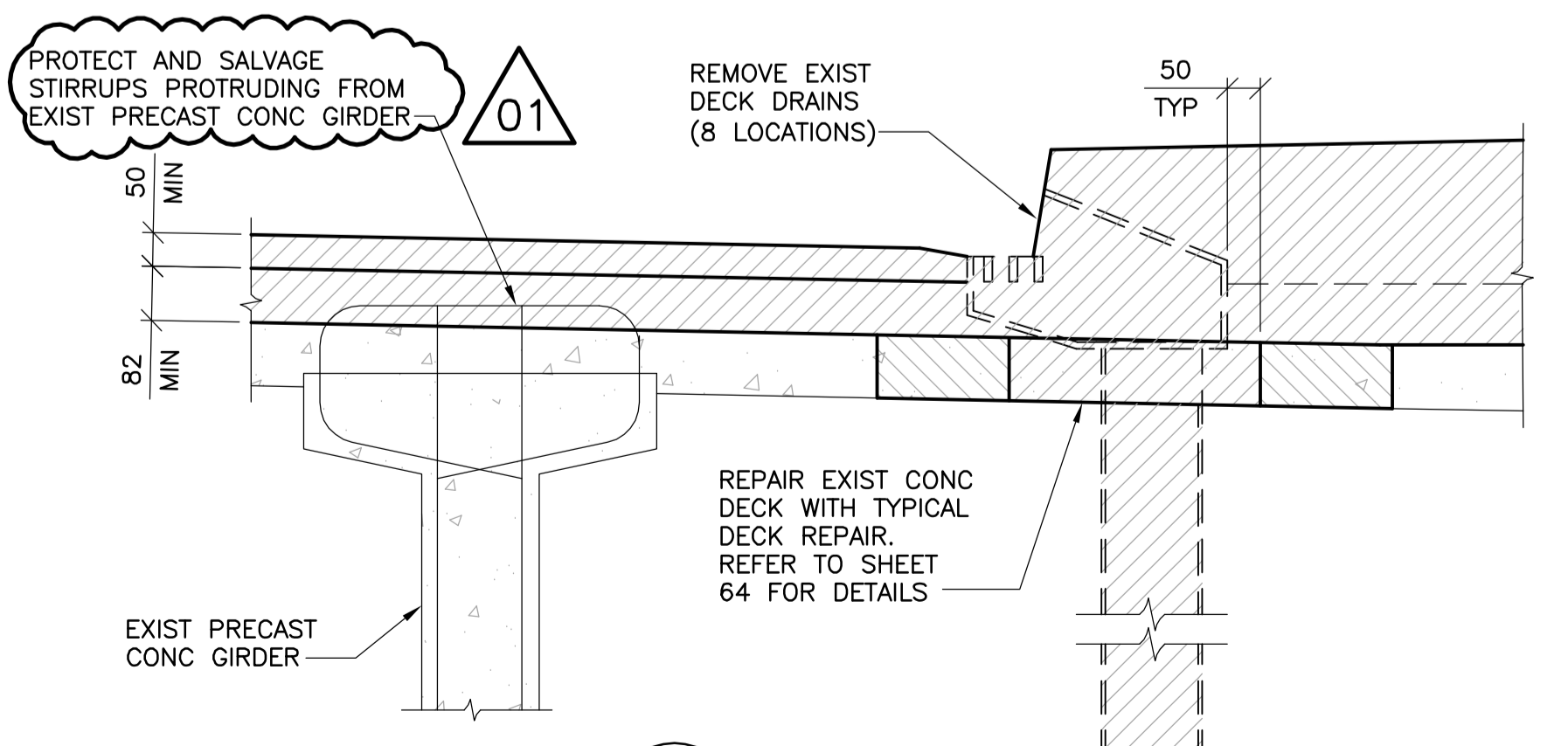
**4 FULL DEPTH REMOVAL**  
56 | 57  
1 : 10



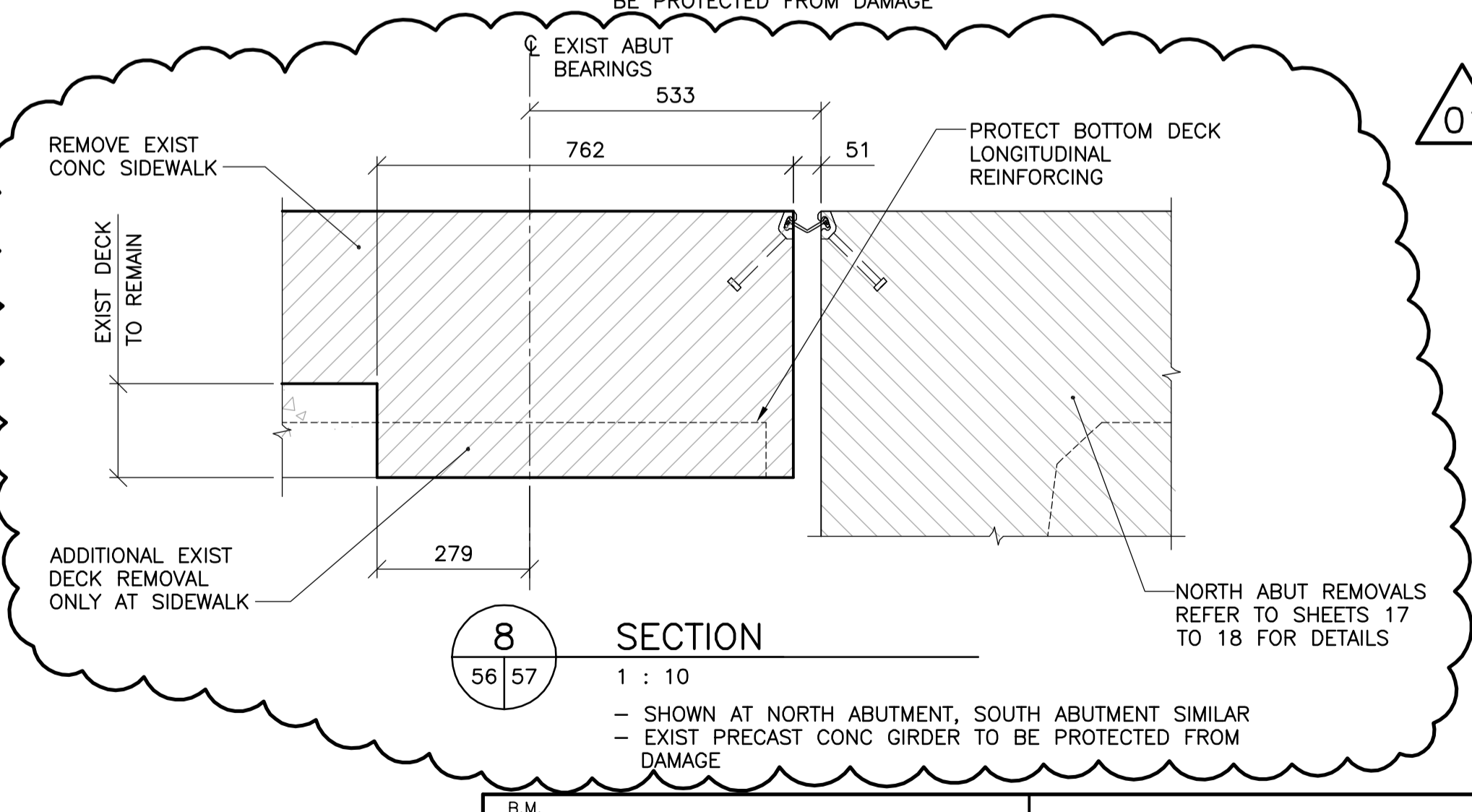
**5 SECTION**  
56 | 57  
1 : 10  
EXIST PRECAST CONC GIRDER TO BE PROTECTED FROM DAMAGE



**6 SECTION**  
56 | 57  
1 : 10  
EXIST PRECAST CONC GIRDER TO BE PROTECTED FROM DAMAGE



**7 DETAIL**  
56 | 57  
1 : 10

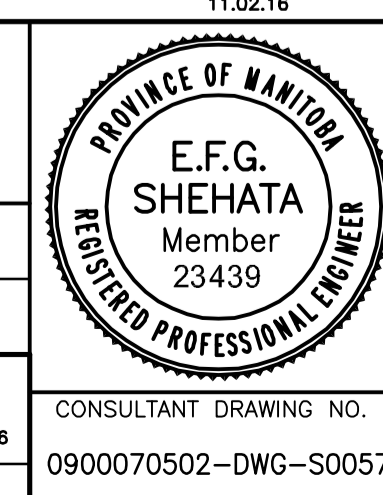


**8 SECTION**  
56 | 57  
1 : 10  
- SHOWN AT NORTH ABUTMENT, SOUTH ABUTMENT SIMILAR  
- EXIST PRECAST CONC GIRDER TO BE PROTECTED FROM DAMAGE



B.M. ELEV.	F.B.	DATE	BY

<b>WARDROP</b> ATETRA TECH COMPANY	
DESIGNED BY: V.B.	CHECKED BY: E.F.S.
DRAWN BY: B.M.	APPROVED BY: R.H.W.
HOR. SCALE: AS NOTED	RELEASED FOR CONSTRUCTION DATE: 11.02.18
VERTICAL: AS NOTED	ORIGINAL SIGNED: 11.02.18
DATE: 10.10.13	DATE: 10.10.13



<b>THE CITY OF WINNIPEG</b> PUBLIC WORKS DEPARTMENT ENGINEERING DIVISION	
<b>OSBORNE STREET BRIDGE</b> REHABILITATION & RELATED WORKS	
<b>BRIDGE DECK - PHASE 1 REMOVAL</b>	
CITY DRAWING NUMBER <b>B109-11-062</b>	SHEET OF <b>57</b> OF <b>131</b>
CONSULTANT DRAWING NO. 0900070502-DWG-S0057	
<b>57</b>	