

Note:
Number of courses may vary (see Grading Drawing)

150 mm x 150 mm PT Timber. 8 mm chamfer on both top edges. Joints at corners to be half lap. Joints in straight runs lap with min 90 cm overlap. Min length of Timber is 120 cm. Used longest lengths possible. Layers of timber below the topmost layer to be offset 10 mm to the outside.

Courses to be LEVEL.

End Cut preservative to be used in accordance with Timber Supplier Instructions

Bottom course to be minimum 1/2 buried into subgrade. (below safety surfacing and drainage course (if required))

75 mm ø Weeping tile or 150 mm depth multi flo connected into subsurface drain system or drained to air.

19mm dia. rebar 50 cm in length placed in predrilled holes 1200 mm o.c. and at all lap and half lap joints.

Compacted 20 mm ø down Limestone

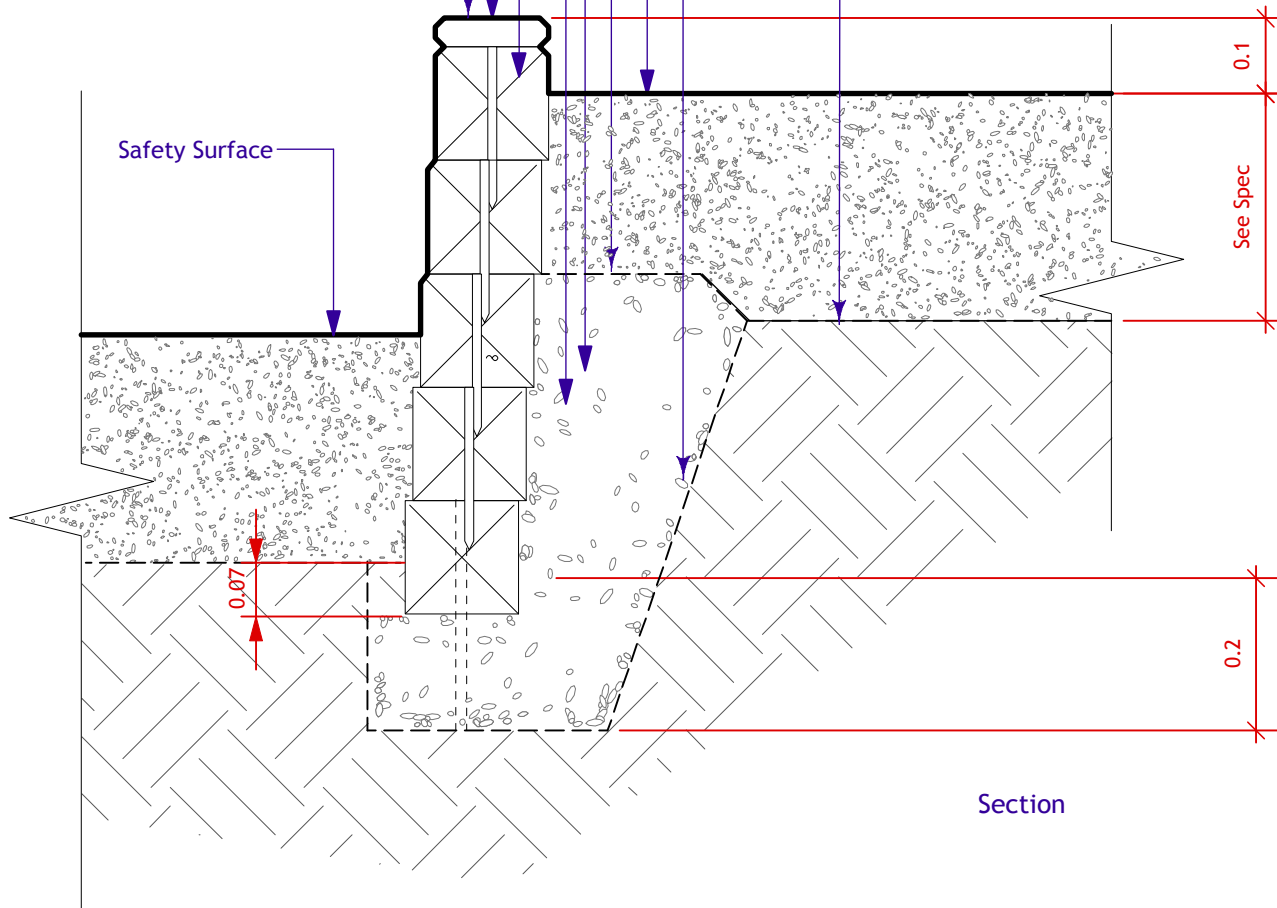
Filter fabric

Safety Surface or adjacent surface

Filter fabric

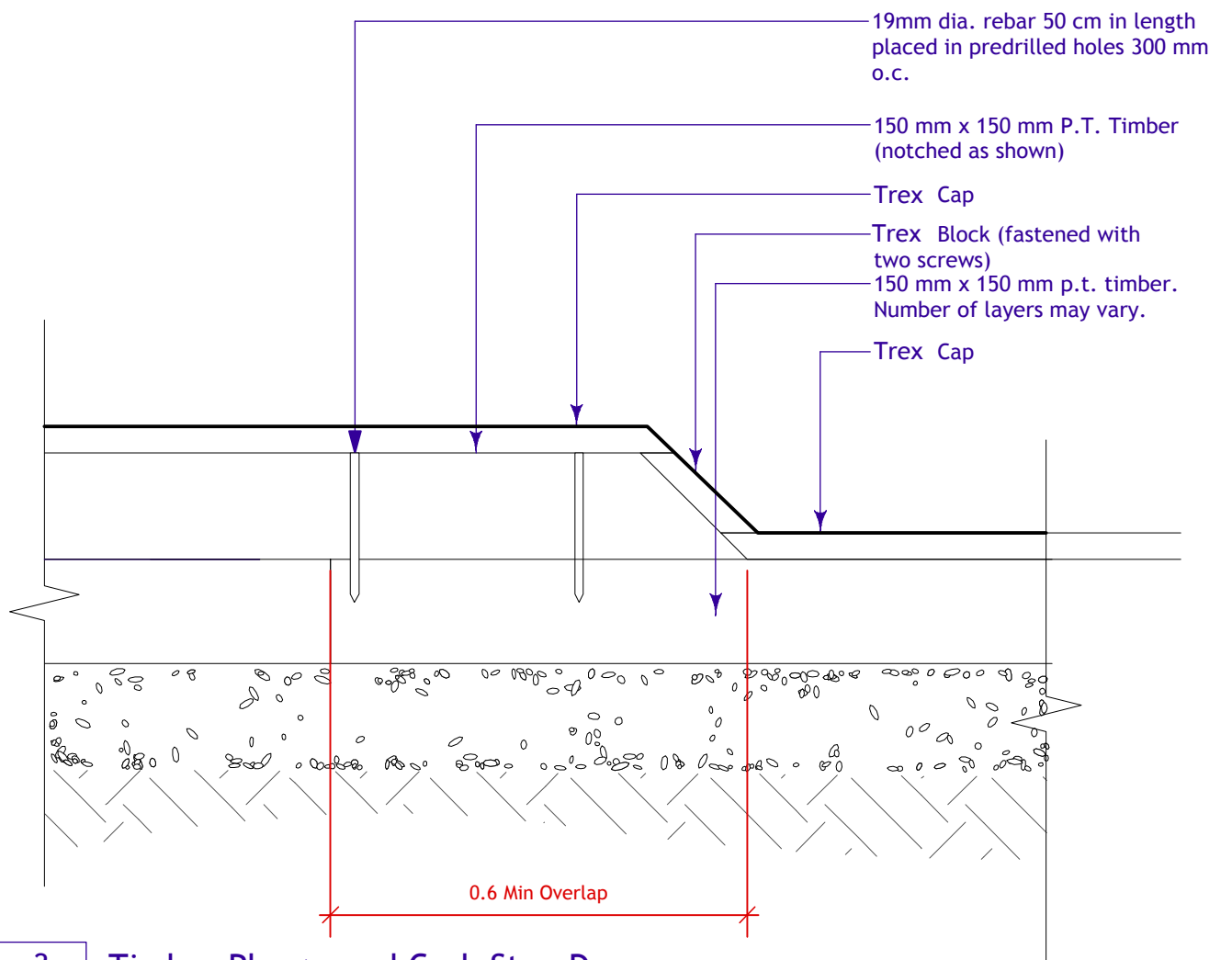
Filter fabric

32 mm x 150 mm Trex Cap. 8 mm chamfer on both top and bottom edges. Bark side to be up. Joints to be lapped with Timber below.



Section

| | |
|-----|--|
| 1 | Timber Playground Curb (Multiple Layer with Cap) |
| L-7 | Scale: 1:10 |



| | |
|-----|----------------------------------|
| 2 | Timber Playground Curb Step Down |
| L-7 | Scale: 1:10 |

2 9/12/11 For Bid Opportunity

No. Date Issue Notes

Drawing No.

L-7 of 11

4/23/10

Burton Cummings CC
Play Curb Details

