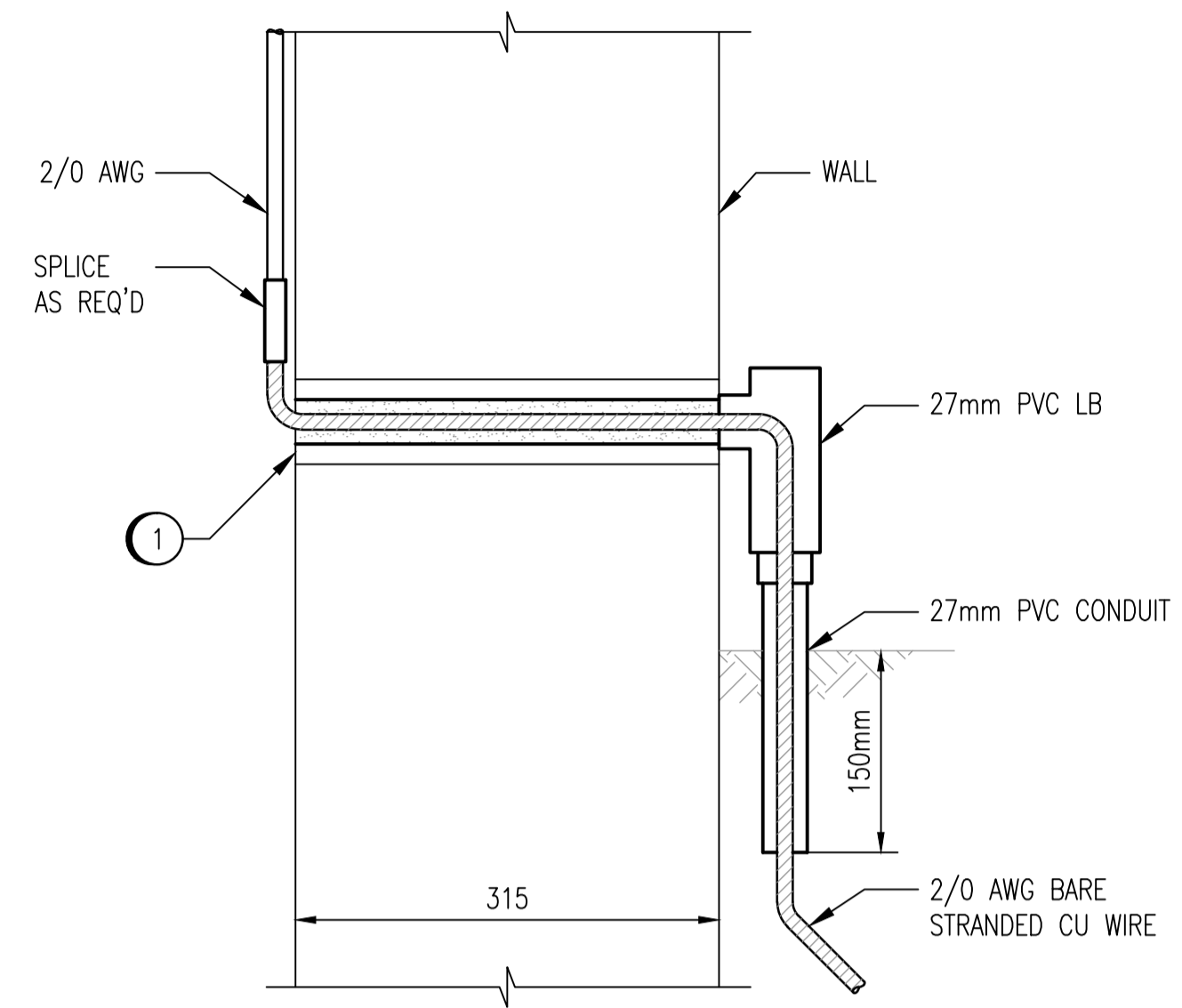
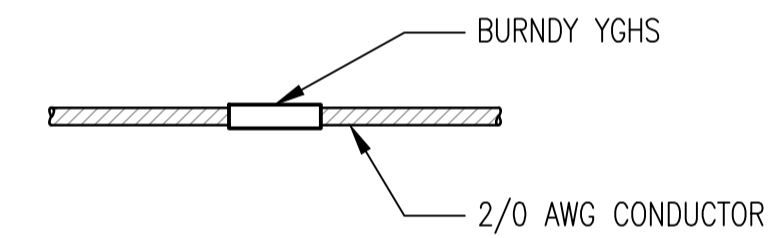


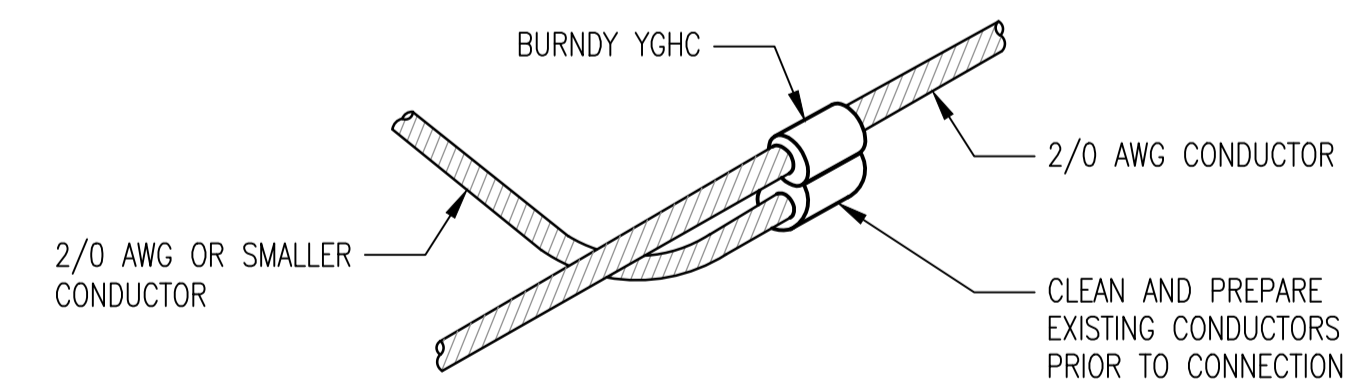
DETAIL: LIFT STATION AND FLOOD STATION RISER DIAGRAM
SCALE: NTS



A BUILDING ENTRY ABOVE GRADE
NTS

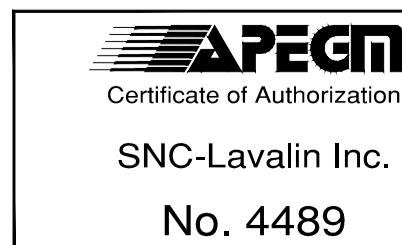


B GROUND CONDUCTOR SPLICE
NTS



C GROUND CONDUCTOR TEE
NTS

CONSTRUCTION NOTES	
1	CORE DRILL HOLE THROUGH WALL, INSTALL CABLE AND SEAL PENETRATION.
2	GROUND CONNECTIONS TO XFMR-L10 AND LIFT STATION WATER SERVICE ARE EXISTING.
3	CONFIRM THE EXISTENCE, LOCATION AND CONDITION OF THE EXISTING GROUNDING ELECTRODE. EXPOSE ALL CONDUCTOR CONNECTIONS AND ALLOW FOR INSPECTION BY THE CONTRACT ADMINISTRATOR.



NO.	REVISIONS	DATE	DESIGN	CHECK
02	ISSUED FOR TENDER, BID OPP. 774-2011	2011/11/10	BC	CJR
01	AS-BUILT	2011/05/10	BC	CJR
00	ISSUED FOR QUOTATION	2011/01/13	BC	CJR

		SNC-LAVALIN INC. 148 Nature Park Way Winnipeg, MB, Canada R3P 0X7 204-796-8080	
DESIGNED BY:	B. CLEVEN	CHECKED BY:	C. REIMER
DRAWN BY:	S. FUNK	APPROVED BY:	C. REIMER
SCALE:	NTS	RELEASED FOR CONSTRUCTION BY:	V. JEANCART
DATE:	2010/12/10	DATE:	2011/11/15
CONSULTANT NO.:	505581-0000-47DD-0001		

ENGINEER'S SEAL
 ORIGINAL DRAWING
 SEALED BY:
 C. J. REIMER
 SNC-LAVALIN INC.
 MEMBER # 21968
 2011/11/15
 REV. 02

THE CITY OF WINNIPEG WATER AND WASTE DEPARTMENT			
MAGER DRIVE FLOOD AND WASTEWATER PUMPING STATIONS GROUNDING DETAILS			
CITY DRAWING NUMBER	SHEET	REV.	SIZE
1-0157A-E0003	001	02	A1

DRAWING NUMBER	REFERENCE DRAWINGS
----------------	--------------------