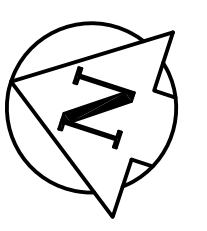


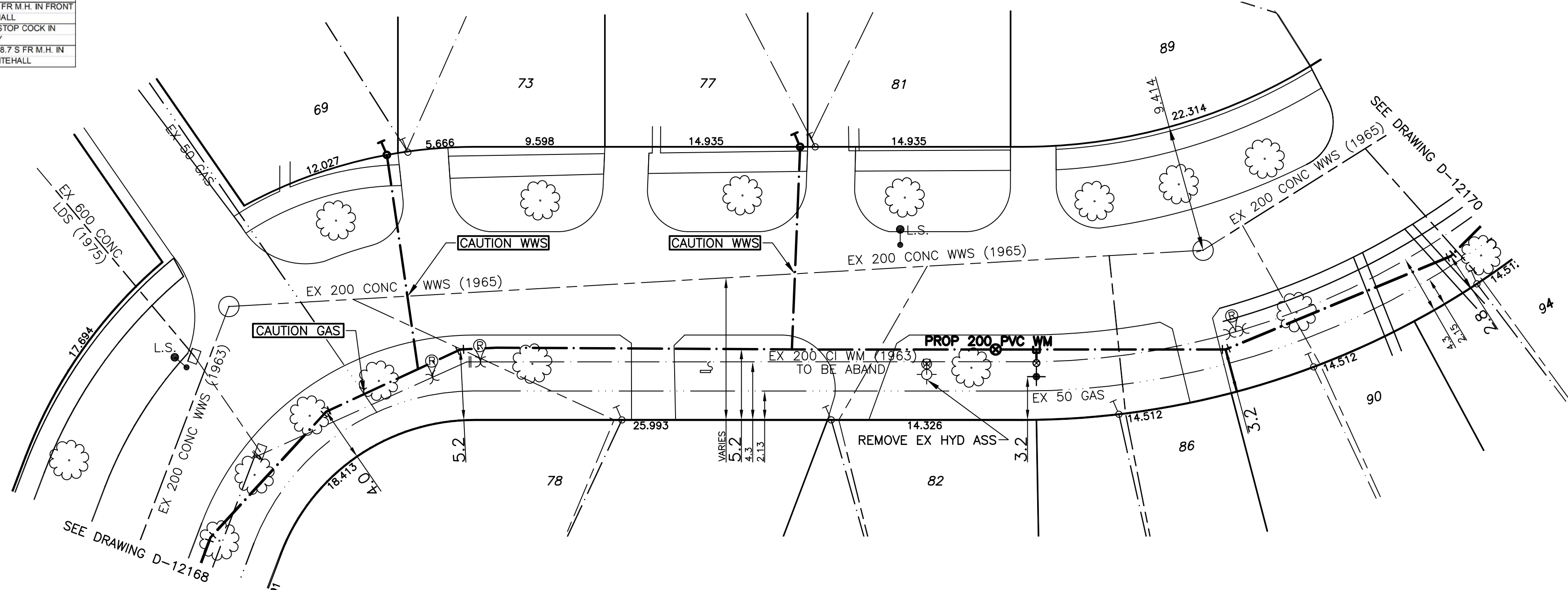
HOUSE WATER SERVICE INFORMATION				
ADDRESS & NATURE OF SERVICE	SIZE (mm) & TYPE	SHORT & LONG MEASUREMENT	CORP LOCATION	REMARKS
69 Whitehall Blvd Residential	19 Copper	2.3 S.S. HSE LINE LOCATED IN DRIVEWAY LOT173		Y AT PROPERTY
73 Whitehall Blvd Residential	19 Copper	1.5 N. N. LINE		Y AT PROPERTY
78 Whitehall Blvd Residential	19 Copper	9.3 FR. HSE. FRT. 7.8 X. S. LINE 9.8 FR. HSE. FRT.		SEE SKETCH SWR JCT - 9.1 S FR M.H. AT N BEND OF WHITEHALL
81 Whitehall Blvd Residential	19 Copper	2 NN HL 8.4 FROM HOUSE FRONT		Y AT PROPERTY LINE S/C LOCATED IN SIDE WALK AT DRIVEWAY
82 Whitehall Blvd Residential	19 Copper	1.7 NNL HOUSE 8.5 OUT FR HSE FRONT		SWR JCT - 51.5 S FR M.H. AT N BEND OF WHITEHALL
86 Whitehall Blvd Residential	19 Copper	5 N. LINE 10.2 FR. HSE. FRT.		SEE SKETCH SWR JCT - 84.9 E FR M.H. AT N BEND OF WHITEHALL
89 Whitehall Blvd Residential	19 Copper	9.8 S/S HSE LINE 8.7 SS CORNER OF HSE		STOP COCK IN DRIVEWAY
90 Whitehall Blvd Residential	19 Copper	4.7 S N. LINE 9.6 FR. HSE. FRT.		SEE SKETCH SWR JCT - 3.4 S FR M.H. IN FRONT OF 90 WHITEHALL
94 Whitehall Blvd Residential	19 Copper	5.2 E. N. LINE 11.2 FR. HSE. FRT.		SEE SKETCH SWR JCT - 14 FR M.H. IN FRONT OF 90 WHITEHALL
97 Whitehall Blvd Residential	19 Copper	7.5 W W/L IN DRIVEWAY		Y AT PROPERTY LINE - STOP COCK IN DRIVEWAY
98 Whitehall Blvd Residential	19 Copper	4.7 E. W. LINE 8.5 FR. HSE. FRT.		SEE SKETCH SWR JCT - 28.7 S FR M.H. IN FRONT OF 90 WHITEHALL

CHAINAGE ALONG SOUTH AND WEST PROPERTY LINES OF WHITEHALL BOULEVARD

WHITEHALL BOULEVARD



- NOTES:**
1. ALL GATE VALVES ARE COUNTER-CLOCKWISE TO OPEN WITH A BLACK OPERATING NUT.
 2. WATERMAIN TO BE INSTALLED BY TRENCHLESS METHODS.
 3. BACKFILL IS CLASS 5 WITHIN BOULEVARD AND CLASS 3 WHEN WITHIN 1.0m OF PAVEMENT OR SIDEWALK.
 4. WATER SERVICES ARE 19mm UNLESS OTHERWISE NOTED.
 5. MINIMUM COVER TO TOP OF WATERMAIN SHALL BE 2.4m.
 6. LOCATION OF ALL SERVICES TO BE CONFIRMED IN FIELD.
 7. EXPOSE EXISTING WATERMAIN TO CONFIRM DEPTH PRIOR TO CONSTRUCTION.
 8. ALL LEAD SERVICES TO BE RENEWED TO PROPERTY LINE.
 9. SERVICES TO BE RENEWED SHALL BE REPLACED FROM WATERMAIN TO PROPERTY LINE. ALL OTHERS TO BE RECONNECTED.



METRIC
WHOLE NUMBERS INDICATE MILLIMETRES
DECIMALIZED NUMBERS INDICATE METRES



EXISTING	LEGEND - PLAN	PROPOSED	EXISTING	LEGEND - PLAN	PROPOSED	EXISTING	LEGEND - PROFILE	PROPOSED
---	WATERMAIN	---	---	REDUCER	---	---	150mm W.M.	---
+	HYDRANT VALVE	+	+	PLUG	+	+	300mm L.D.S.	---
•	LAND DRAINAGE SEWER	•	•	TRAFFIC SIGNAL	•	•	250mm W.W.S.	---
---	WASTE WATER SEWER	---	---	GAS	---	---	300mm L.D.S.	---
○	MANHOLE	○	○	HYDRO	○	○	250mm W.W.S.	---
□	CATCH BASIN	□	□	M.T.S.	□	□	---	---
+	CURB STOP	+	+	C.B. LEAD	+	+	---	---
+	TEE	+	+	SURVEY BAR	+	+	---	---
+	BEND	+	+	TREE	+	+	---	---
+	ANODE	+	+	* H.P.	+	+	---	---
---	---	---	---	HYDRO POLE	---	---	---	---
---	---	---	---	LAMP STANDARD	---	---	---	---

LOCATION APPROVED	
SUPV. U/G STRUCTURES COMMITTEE	DATE
NOTE:	
LOCATION OF UNDERGROUND STRUCTURES AS SHOWN ARE BASED ON THE BEST INFORMATION AVAILABLE BUT NO GUARANTEE IS GIVEN THAT ALL EXISTING UTILITIES ARE SHOWN OR THAT THE GIVEN LOCATIONS ARE EXACT. CONFIRMATION OF EXISTENCE AND EXACT LOCATION OF ALL SERVICES MUST BE OBTAINED FROM THE INDIVIDUAL UTILITIES BEFORE PROCEEDING WITH CONSTRUCTION.	
B.M. ELEV.	CWBM 30-051 234.585
NO.	REVISIONS
DATE	BY

GENIVAR
10 PRINCE WAY WINNIPEG, MANITOBA R2J 3J8
PH: (204)-477-8650 FAX: (204)-474-2864

DESIGNED BY	PR	CHECKED BY	SM
DRAWN BY	PR	APPROVED BY	IMcK
HOR. SCALE:	1:250	RELEASED FOR CONSTRUCTION	ORIGINALLY SIGNED BY
VERT. SCALE:	1:50	DATE	

ENGINEERS SEAL
I. G. MCKINNON
REGISTERED PROFESSIONAL ENGINEER
CONSULTANT DRAWING NO. 010-050-07

THE CITY OF WINNIPEG
WATER AND WASTE DEPARTMENT

2010 CAPITAL WORKS
WATERMAIN RENEWALS
WHITEHALL BOULEVARD
55M EAST OF SOUTHAMPTON PLACE TO
125M EAST OF SOUTHAMPTON PLACE

SHEET 2 OF 3
CITY DRAWING NO. D-12169