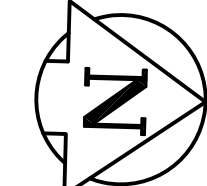
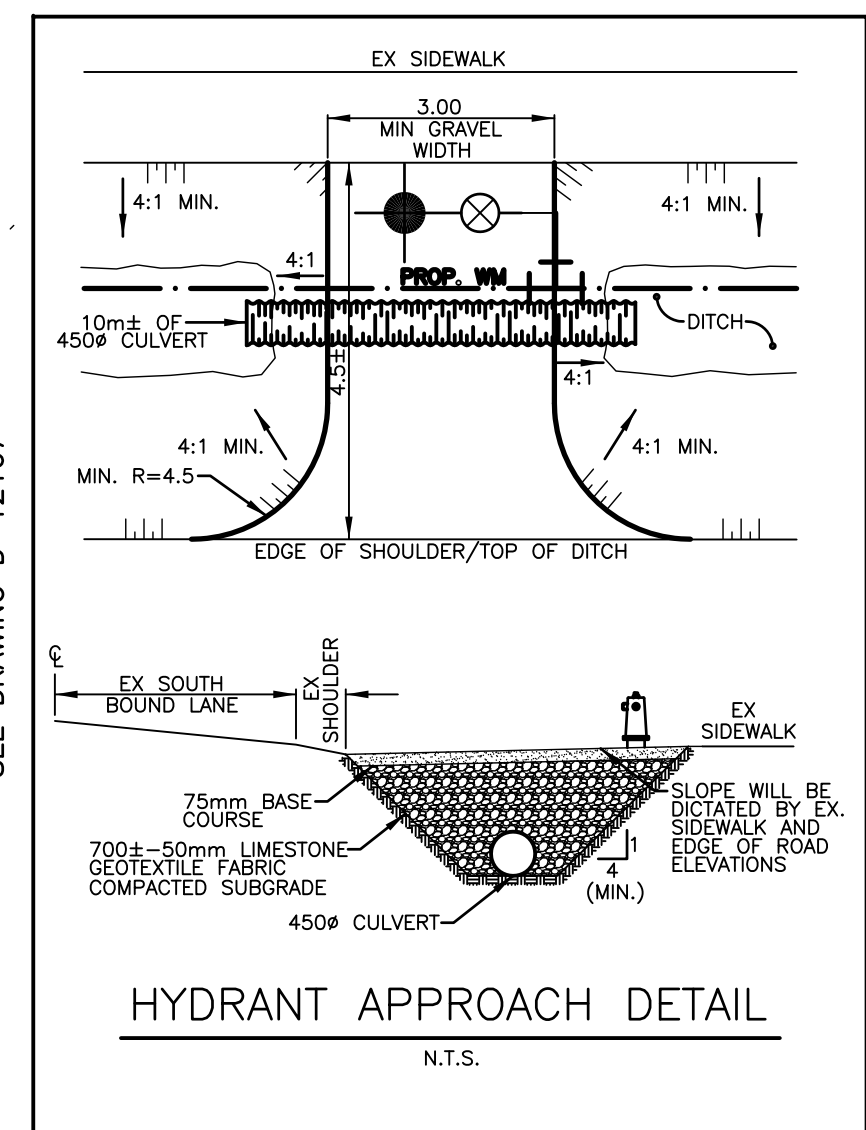
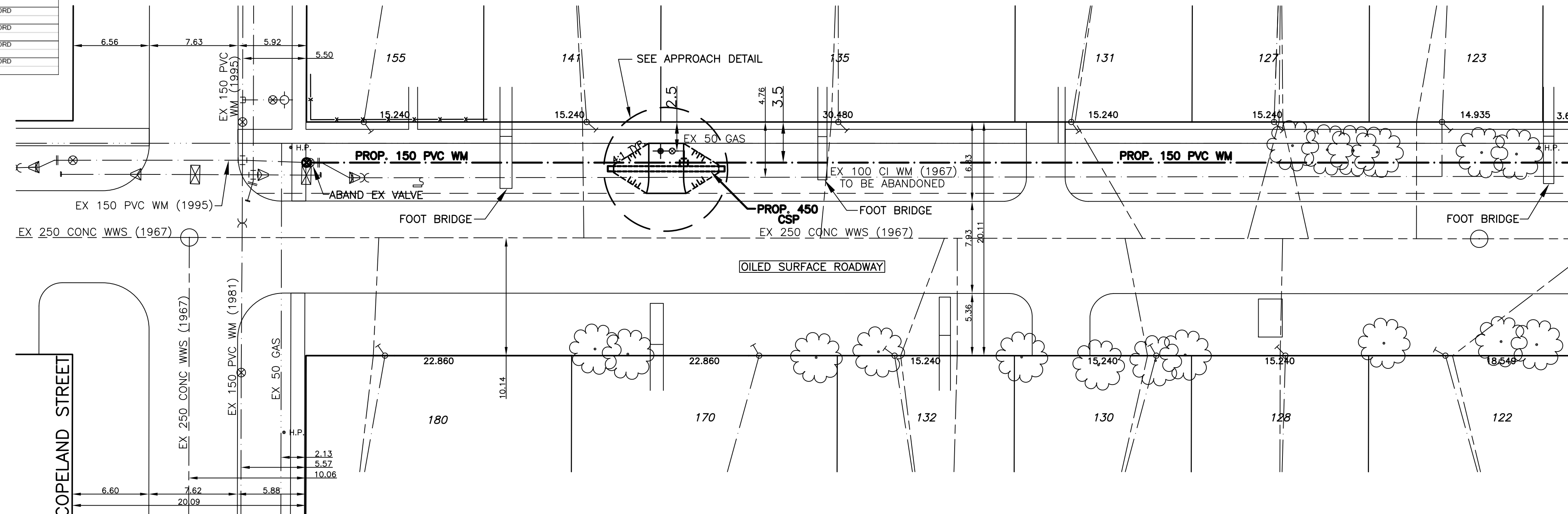


HOUSE WATER SERVICE INFORMATION				
ADDRESS & NATURE OF SERVICE	SIZE (mm) & TYPE	SHORT & LONG MEASUREMENT	CORP. LOCATION	REMARKS
122 McFadden Ave Residential	19 Copper			NO RECORD
123 McFadden Ave Residential	19 Copper			NO RECORD
127 McFadden Ave Residential	19 Copper	0.9 S. N. HSE		
128 McFadden Ave Residential	19 Copper			NO RECORD
130 McFadden Ave Residential	19 Copper			NO RECORD
131 McFadden Ave Residential	19 Copper			NO RECORD
132 McFadden Ave Residential	19 Copper			NO RECORD
135 McFadden Ave Residential	19 Copper			NO RECORD
141 McFadden Ave Residential	19 Copper			NO RECORD
155 McFadden Ave Residential	19 Copper			NO RECORD
170 McFadden Ave Residential	19 Copper			NO RECORD
180 McFadden Ave Residential	19 Copper			NO RECORD

CHAINAGE ALONG WEST PROPERTY LINE OF McFADDEN AVENUE



- NOTES:**
- ALL GATE VALVES ARE COUNTER-CLOCKWISE TO OPEN WITH A BLACK OPERATING NUT.
 - WATERMAIN TO BE INSTALLED BY TRENCHLESS METHODS.
 - BACKFILL IS CLASS 5 WITHIN BOULEVARD AND CLASS 3 WITHIN 1.0m OF PAVEMENT OR SIDEWALK.
 - WATER SERVICES ARE 19mm UNLESS OTHERWISE NOTED.
 - MINIMUM COVER TO TOP OF WATERMAIN SHALL BE 2.4m.
 - LOCATION OF ALL SERVICES TO BE CONFIRMED IN FIELD.
 - EXPOSE EXISTING WATERMAIN TO CONFIRM DEPTH PRIOR TO CONSTRUCTION.
 - ALL LEAD SERVICES TO BE RENEWED TO PROPERTY LINE.
 - SERVICES TO BE RENEWED SHALL BE REPLACED FROM WATERMAIN TO PROPERTY LINE. ALL OTHERS TO BE RECONNECTED.
 - CLEAN AND REGRADE EXISTING DITCH AS REQUIRED AND DIRECTED BY THE CONTRACT ADMINISTRATOR.



EXISTING	LEGEND - PLAN	PROPOSED	EXISTING	LEGEND - PLAN	PROPOSED	EXISTING	LEGEND - PROFILE	PROPOSED
—	WATERMAIN	—	—	REDUCER	—	—	WATERMAIN VALVE	—
—	HYDRANT	—	—	PLUG	—	—	LAND DRAINAGE SEWER	—
—	VALVE	—	—	TRAFFIC SIGNAL	—	—	WASTE WATER SEWER	—
—	LAND DRAINAGE SEWER	—	—	GAS	—	—	JUNCTIONS	—
—	WASTE WATER SEWER	—	—	HYDRO	—	—	CULVERT	—
—	MANHOLE	—	—	M.T.S.	—	—		
—	CATCH BASIN	—	—	C.B. LEAD	—	—		
—	CURB STOP	—	—	SURVEY BAR	—	—		
—	TEE	—	—	TREE	—	—		
—	BEND	—	—	HYDRO POLE	—	—		
—	ANODE	—	—	LAMP STANDARD	—	—		

LOCATION APPROVED

SUPV. U/G STRUCTURES COMMITTEE

DATE

NOTE: LOCATION OF UNDERGROUND STRUCTURES AS SHOWN ARE BASED ON THE BEST INFORMATION AVAILABLE BUT NO GUARANTEE IS GIVEN THAT ALL EXISTING UTILITIES ARE SHOWN OR THAT THE GIVEN LOCATIONS ARE EXACT. CONFIRMATION OF EXISTENCE AND EXACT LOCATION OF ALL SERVICES MUST BE OBTAINED FROM THE INDIVIDUAL UTILITIES BEFORE PROCEEDING WITH CONSTRUCTION.

NO.	REVISIONS	DATE	BY

GENIVAR
10 PRAIRIE WAY WINNIPEG, MANITOBA R2J 3J8
PH: (204)-477-8650 FAX: (204)-474-2864

DESIGNED BY: LV/PR
CHECKED BY: SM
DRAWN BY: LV
APPROVED BY: IMcK
HOR. SCALE: 1:250
VERT. SCALE: 1:50
DATE: JULY 2010

ENGINEERS SEAL
I. G. MCKINNON
REGISTERED PROFESSIONAL ENGINEER
CONSULTANT DRAWING NO. 010-050-04

THE CITY OF WINNIPEG
WATER AND WASTE DEPARTMENT

2010 CAPITAL WORKS
WATERMAIN RENEWALS
McFADDEN AVENUE
COPELAND STREET TO
110M NORTH OF COPELAND STREET

SHEET 1 OF 2
CITY DRAWING NO. D-12166