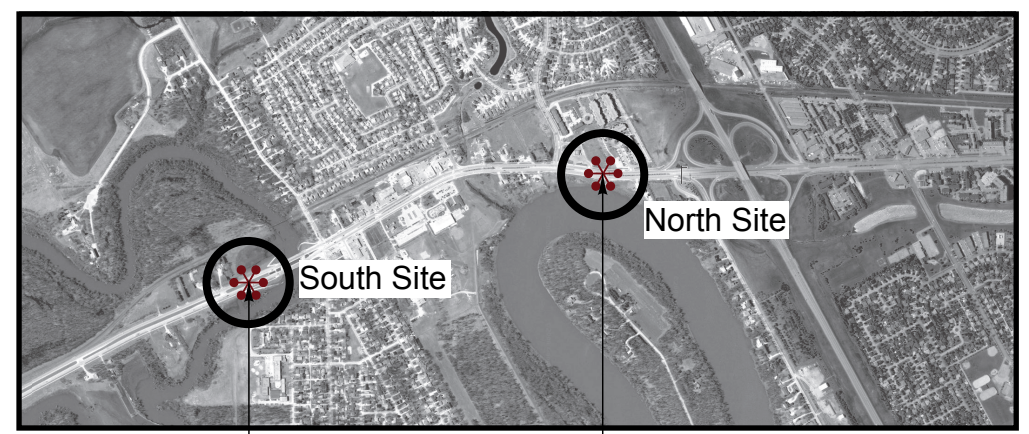
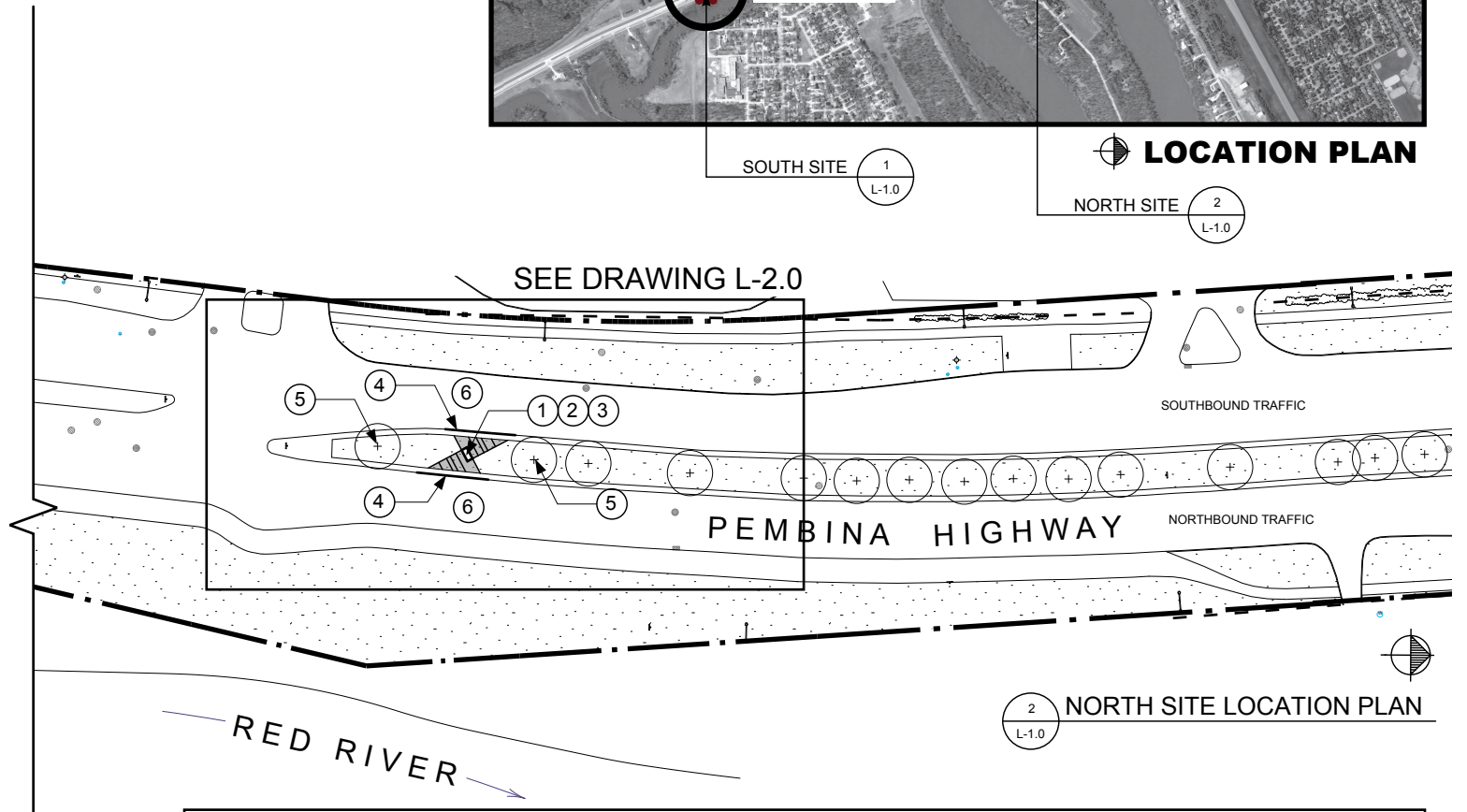


1 SOUTH SITE LOCATION PLAN
L-1.0



1 SOUTH SITE L-1.0
2 NORTH SITE L-1.0
LOCATION PLAN



2 NORTH SITE LOCATION PLAN
L-1.0

SCOPE OF WORK

ITEM	DESCRIPTION
①	REMOVAL OF EXISTING SOD
②	SUPPLY & INSTALL GATEWAY SIGN STRUCTURE
③	INSTALLATION OF PLANTING BEDS
④	INSTALLATION OF SAFETY CURB
⑤	PROTECT EXISTING TREES
⑥	PEDESTRIAN & VEHICULAR TRAFFIC CONTROL DURING CONSTRUCTION
⑦	REMOVAL OF EXISTING PLANT MATERIAL

General Notes:
THIS DRAWING MUST NOT BE SCALED.
THE GENERAL CONTRACTOR SHALL VERIFY ALL DIMENSIONS, DATUMS AND LEVELS PRIOR TO COMMENCEMENT OF WORK. ALL ERRORS AND OMISSIONS TO BE REPORTED IMMEDIATELY TO THE LANDSCAPE ARCHITECT.
VARIATIONS & MODIFICATIONS TO WORK SHOWN ON THESE DRAWINGS SHALL NOT BE CARRIED OUT WITHOUT WRITTEN PERMISSION FROM THE LANDSCAPE ARCHITECT.
THIS DRAWING IS THE EXCLUSIVE PROPERTY OF THE LANDSCAPE ARCHITECTS AND CAN BE REPRODUCED ONLY WITH THE PERMISSION OF THE LANDSCAPE ARCHITECTS, IN WHICH CASE THE REPRODUCTION MUST BEAR THEIR NAME AS LANDSCAPE ARCHITECTS.

Revisions:

No.	Revision	Date
2	RELEASED FOR TENDER	Sept. 20, 2011
1	RELEASED FOR REVIEW	Aug. 19, 2011

Project:
**St. Norbert Gateway
Pembina Highway**

Landscape Architect
**HILDERMAN
THOMAS
FRANK
CRAM**
Landscape Architecture • Planning
500-115 Bannatyne Avenue East, Winnipeg, Manitoba R3B 0R3 Telephone 204 • 944 • 9907 Facsimile 204 • 957 • 1467

Drawing Title: **Scope of Work**

Drawn:	LW
Approved:	GM
Date:	September 20, 2011
Scale:	1:1000
Project No.	10-080
Drawing No.	L - 1.0