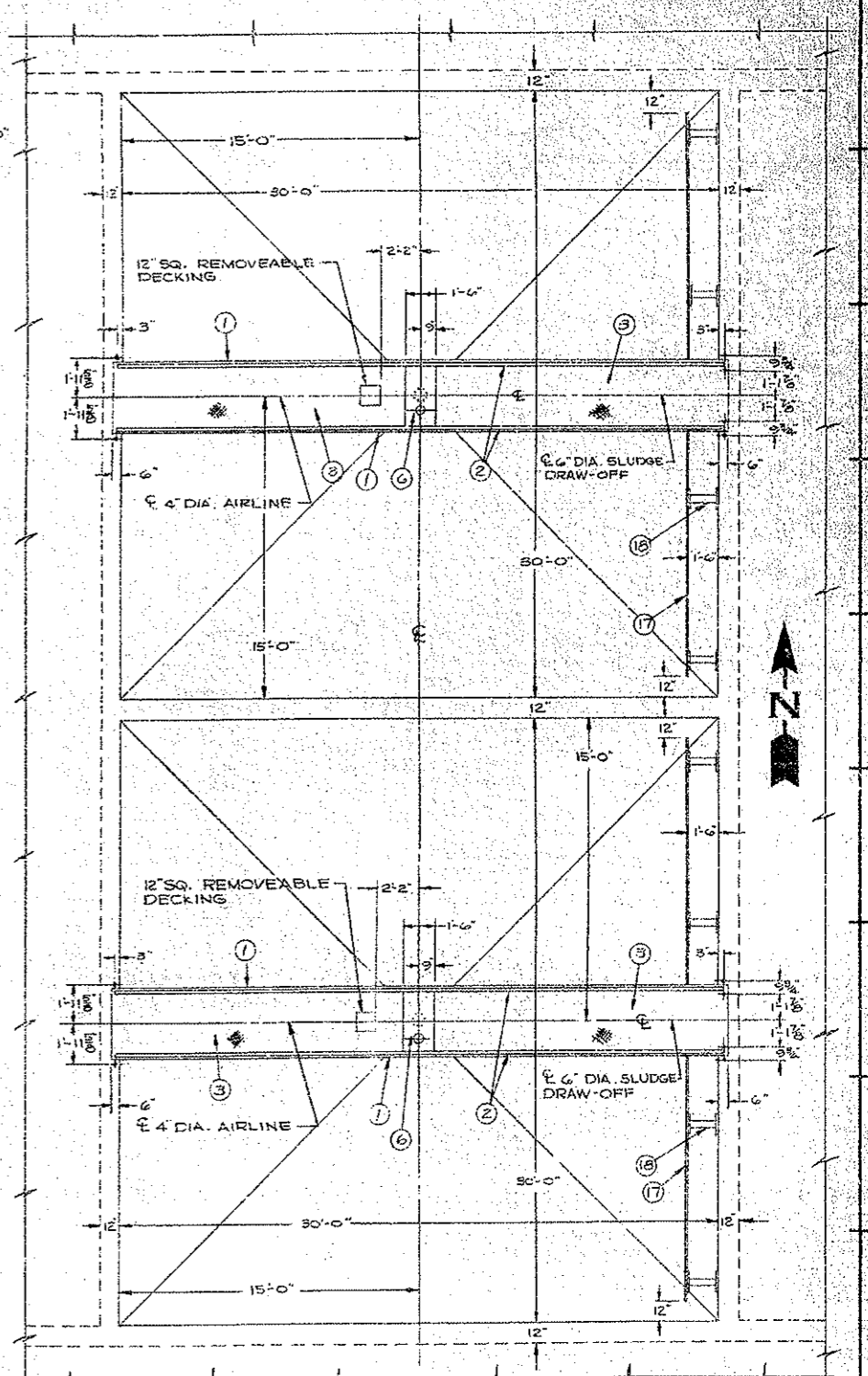
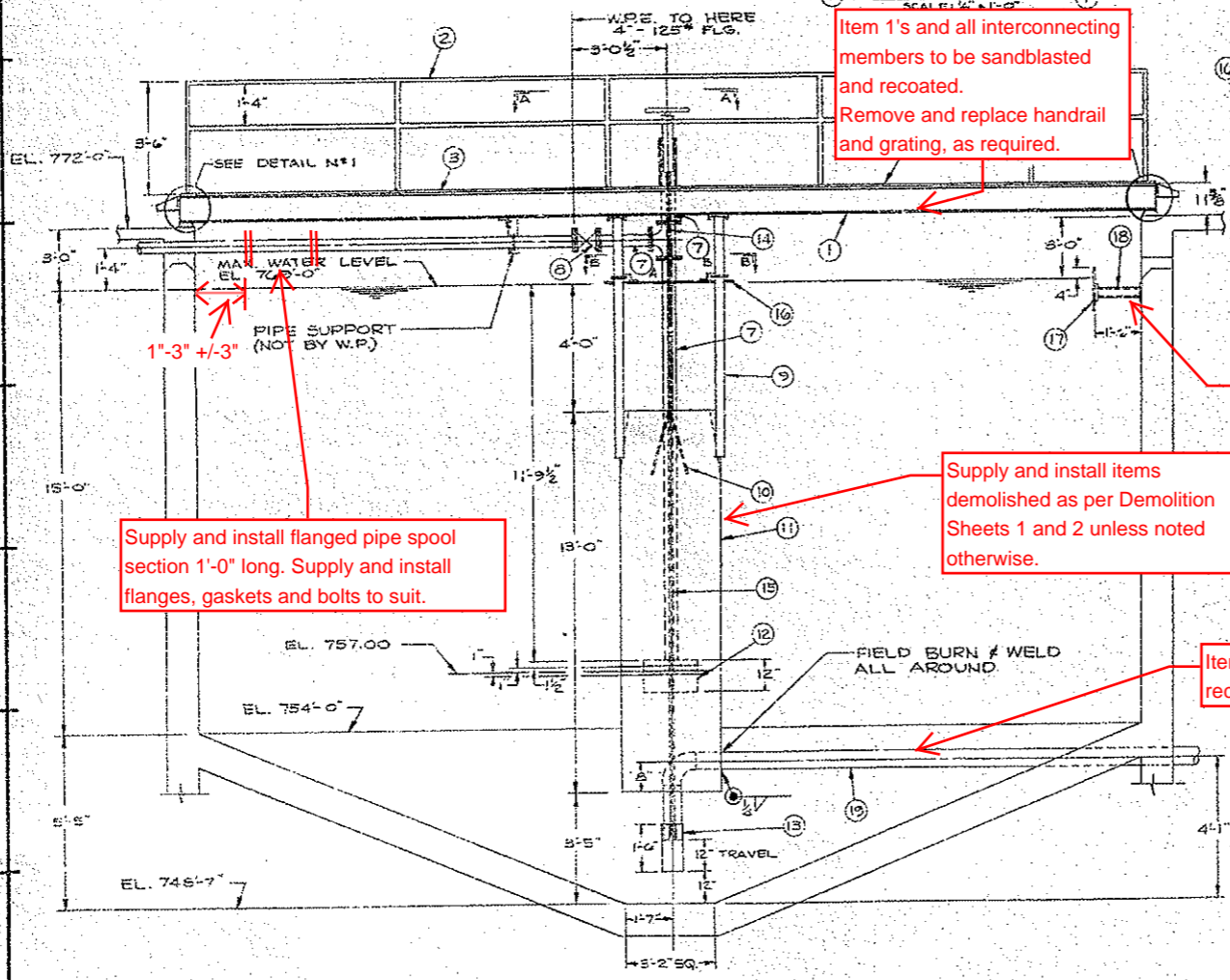
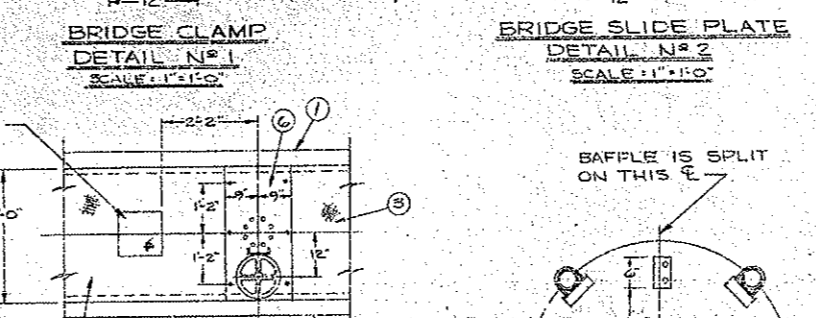
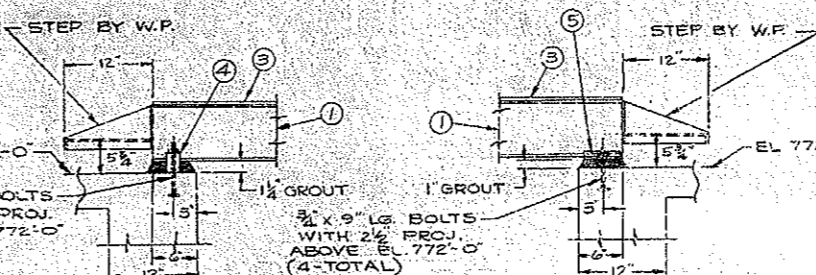


ASSEMBLY LIST

- ① BRIDGE BEAM, W10x25, 3'-3" CENTER OF BEAMS
- ② HANDRAILS, 1 1/2" DIA. STD. GALV. WITH DENIER FITTINGS
- ③ BRIDGE WALKWAY GRATING, GARY GAL-100
- ④ BRIDGE CLAMP, SEE DRG. 1516223
- ⑤ BRIDGE SLIDE PLATE, SEE DRG. 1516261
- ⑥ BRIDGE PLATE, 5/8" THICK
- ⑦ AIRLINE 4" DIA. SAE
- ⑧ 4" valve (provided by the City)
- ⑨ SUPPORT PIPES (4) 3" DIA. STD. WT. STL. PIPES
- ⑩ SWIRL VANES 4 @ 90°, 4" WIDE, TIPPED 20°
- ⑪ EDUCTOR TUBE, 3/8" O.D. 1/4" WALL
- ⑫ AIR DIFFUSION HEAD, 20" SCH. 10 PIPE, SEE DRG. 3534405
- ⑬ HUDSON FOOT PIECE, 7 1/4" O.D. x 1/2" WALL
- ⑭ ADJUSTING ROD, 1" DIA. STD. WT. PIPE
- ⑮ ADJUSTING ROD, 1" DIA.
- ⑯ BAFFLE, 4'-0" DIA. x 1/2" THICK
- ⑰ BAFFLE (NOT BY W.P.)
- ⑱ BAFFLE SUPPORTS (NOT BY W.P.)
- ⑲ SLUDGE DRAW-OFF 6" DIA. (NOT BY W.P.) STD. WT. STL. PIPE



Item 1's and all interconnecting members to be sandblasted and recoated. Remove and replace handrail and grating, as required.

Items 17 and 18 to be sandblasted and recoated

Supply and install items demolished as per Demolition Sheets 1 and 2 unless noted otherwise.

Item 19 to be sandblasted and recoated

Supply and install flanged pipe spool section 1'-0" long. Supply and install flanges, gaskets and bolts to suit.

Refurbishment works are typical for Grit Aeration Units #1 and #2

SUBSTITUTION OF CINCH ANCHORS, EXPANSION SHIELDS, STUDS SET WITH A STUD DRIVEN ON THE LIKE, IN PLACE OF ANCHOR BOLTS PROVIDED BY WALKER PROCESS EQUIPMENT WHICH ARE INTENDED TO BE POURED IN THE CONCRETE, WILL BE DONE AT THE CONTRACTOR'S RISK.

NO.	REVISIONS	DATE
1	REV 0 FOR CONSTRUCTION	

THIS DRAWING IS THE PROPERTY OF WALKER PROCESS EQUIPMENT AND IS TO BE USED ONLY IN CONNECTION WITH THE PERFORMANCE OF WORK BY WALKER PROCESS EQUIPMENT. REPRODUCTION IN WHOLE OR IN PART FOR ANY OTHER PURPOSE IS EXPRESSLY FORBIDDEN.

DATE BY WALKER PROCESS EQUIPMENT
 R1-SEWPCC Grit Aeration Unit
 Refurbishment Sheet 1
 CONTRACT 72-W06-BW/FILE 4534406-1