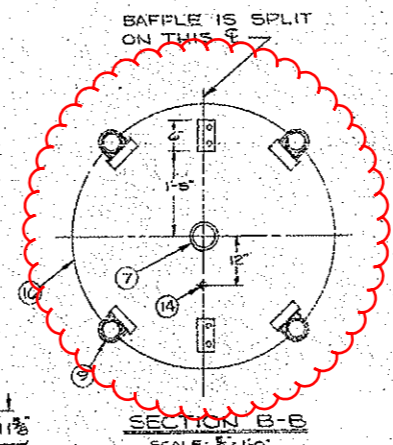
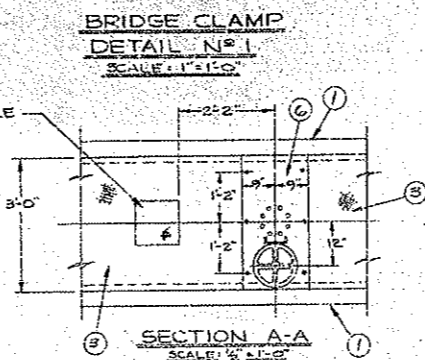
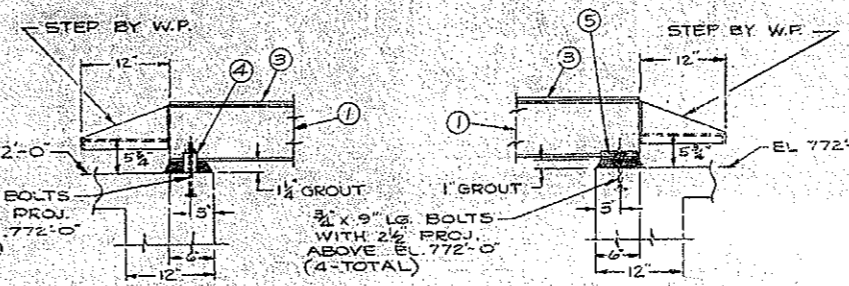


- ASSEMBLY LIST**
- ① BRIDGE BEAM, W10x25, 3'-3" CENTER OF BEAMS
 - ② HANDRAILS, 1 1/2" DIA. STD. GALV. WITH DENIER FITTINGS
 - ③ BRIDGE WALKWAY GRATING, GARY GAL-100
 - ④ BRIDGE CLAMP, SEE DRG. 1516223
 - ⑤ BRIDGE SLIDE PLATE, SEE DRG. 1516261
 - ⑥ BRIDGE PLATE, 5/8" THICK
 - ⑦ AIRLINE 4" DIA. GALV.
 - ⑧ PLUG VALVE, DEZURIK FIG. 115F 4" (BY W.P.)
 - ⑨ SUPPORT PIPES - (4) 3" DIA. STD. WT. STL. PIPES
 - ⑩ SWIRL VANES 4 @ 90°, 4" WIDE, TIPPED 20°
 - ⑪ EDUCTOR TUBE, 58" O.D. 1/4" WALL
 - ⑫ AIR DIFFUSION HEAD, 20" SCH. 10 PIPE, SEE DRG. 3534405
 - ⑬ HUDSON FOOT PIECE, 7 1/4" O.D. x 1/2" WALL
 - ⑭ ADJUSTING ROD, 1" DIA. STD. WT. PIPE
 - ⑮ ADJUSTING ROD, 1" DIA.
 - ⑯ BAFFLE, 4'-0" DIA. x 1/4" THICK
 - ⑰ BAFFLE (NOT BY W.P.)
 - ⑱ BAFFLE SUPPORTS (NOT BY W.P.)
 - ⑲ SLUDGE DRAW-OFF 6" DIA. (NOT BY W.P.) STD. WT. STL. PIPE

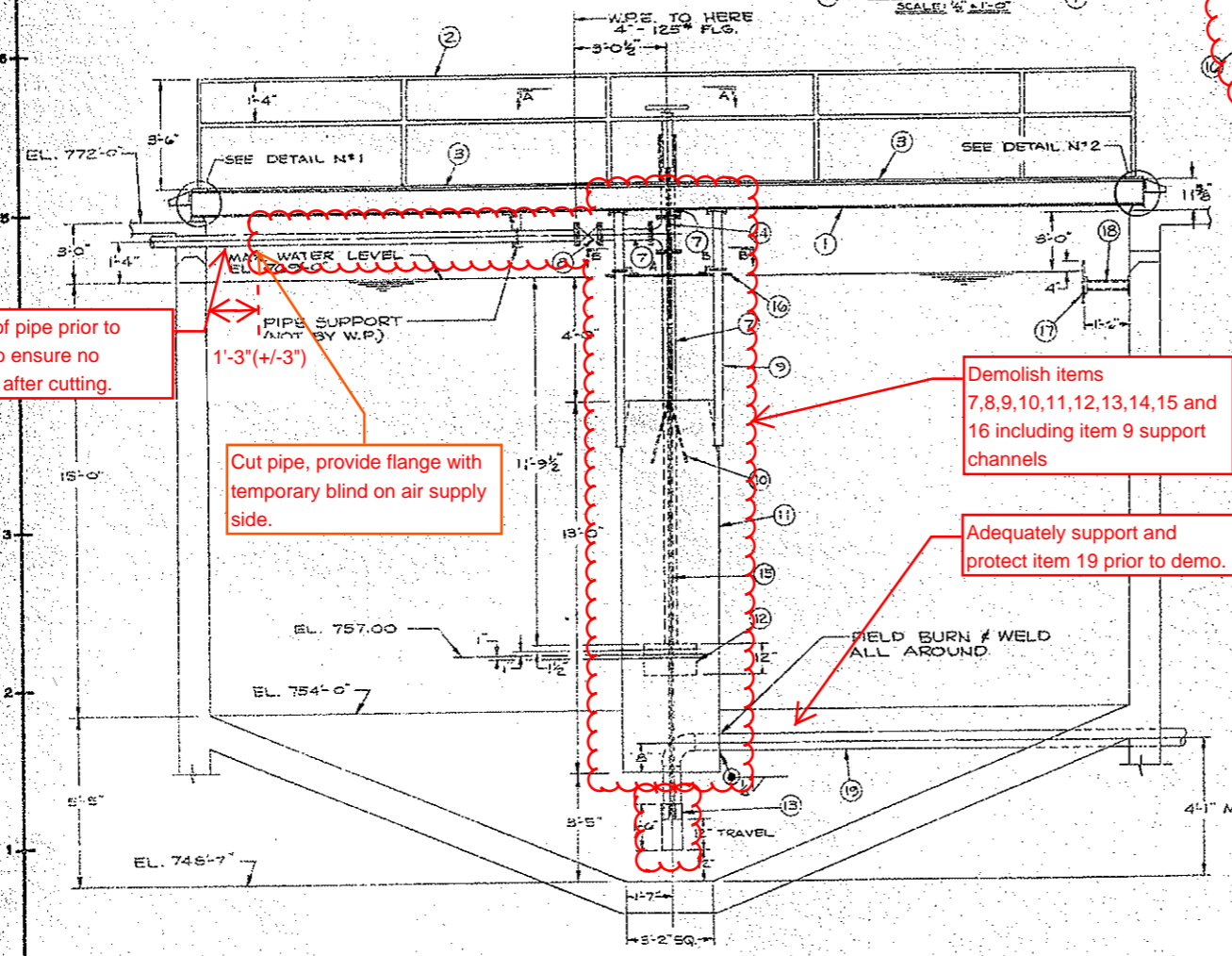


Support this side of pipe prior to demolition so as to ensure no movement of pipe after cutting.

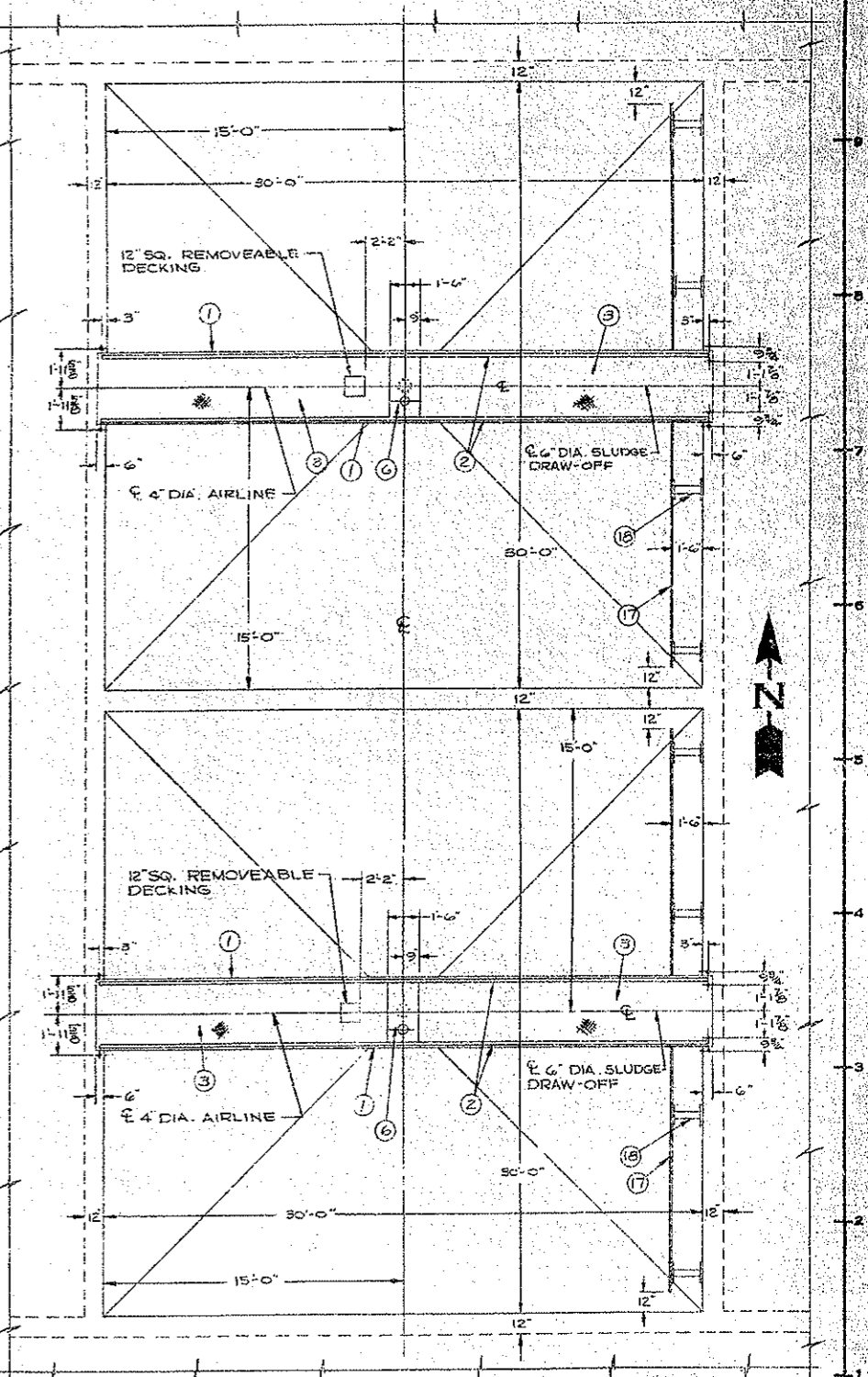
Cut pipe, provide flange with temporary blind on air supply side.

Demolish items 7,8,9,10,11,12,13,14,15 and 16 including item 9 support channels

Adequately support and protect item 19 prior to demo.



TYPICAL SECTIONAL ELEVATION
 GRIT TANKS
 SCALE: 1/2" = 1'-0"



PLAN VIEW
 GRIT TANKS
 SCALE: 1/4" = 1'-0"

SUBSTITUTION OF CINCH ANCHORS, EXPANSION SHIELDS, STUDS SET WITH A STUD DRIVER OR THE LIKE, IN PLACE OF ANCHOR BOLTS PROVIDED BY WALKER PROCESS EQUIPMENT WHICH ARE INTENDED TO BE POURED IN THE CONCRETE, WILL BE DONE AT THE CONTRACTOR'S RISK.

Demolition is typical for Grit Aeration Units #1 and #2

1	REV 0 FOR CONSTRUCTION	DATE	BY

THIS DRAWING IS THE PROPERTY OF WALKER PROCESS EQUIPMENT AND IS TO BE USED ONLY IN CONNECTION WITH THE PERFORMANCE OF WORK BY WALKER PROCESS EQUIPMENT. REPRODUCTION IN WHOLE OR IN PART FOR ANY OTHER PURPOSE IS EXPRESSLY FORBIDDEN.

DATE	BY	WALKER PROCESS EQUIPMENT DIVISION OF CHICAGO BRIDGE & IRON CO.

D1-SEWPCC Grit Aeration Unit
 Demolition Sheet 1