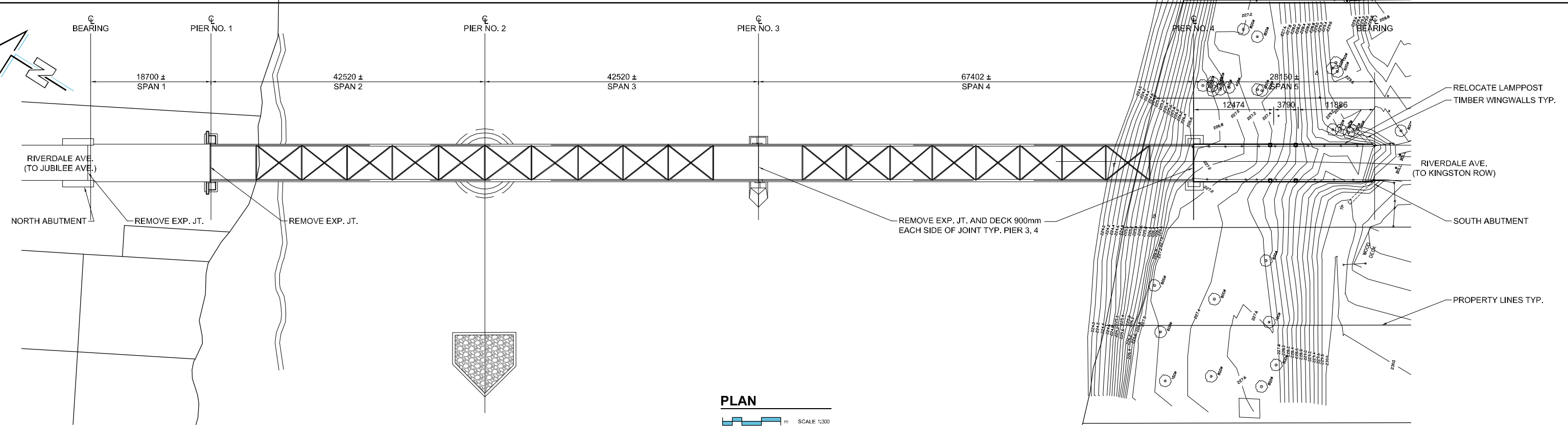


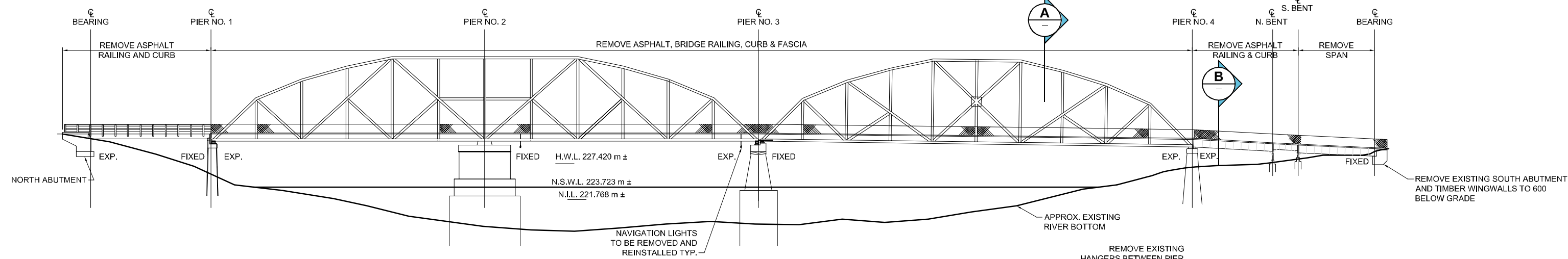
D SIZE 22" x 34" (599mm x 864mm)

PLOT: 11/07/28 1:49:55 PM

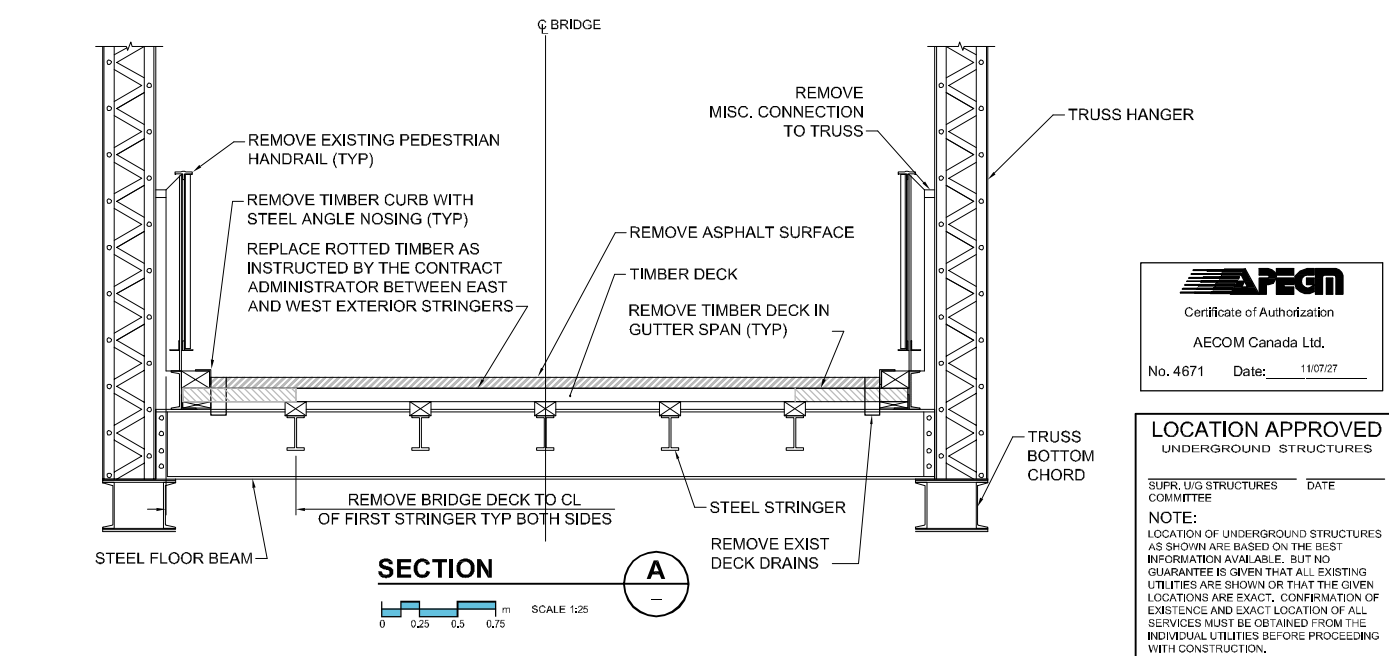
AECOM FILE NAME: 60216082-S-102\_RX.dwg Saved By: cameronkj



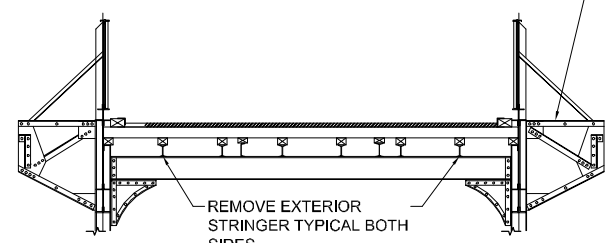
**PLAN**  
SCALE 1:300



**ELEVATION**  
SCALE 1:300



**SECTION A**  
SCALE 1:25



**SECTION B**  
SCALE 1:50

- GENERAL NOTES:**
- ACCESS AND LAYDOWN AREA TO BE APPROVED BY CONTRACT ADMINISTRATOR.
  - THE DETAILS AND DIMENSIONS SHOWN ON THE DRAWINGS HAVE BEEN OBTAINED FROM FIELD MEASUREMENT. ORIGINAL DESIGN DRAWING ARE UNAVAILABLE. CONTRACTOR TO VERIFY ALL DETAILS AND DIMENSIONS AND REPORT ANY DISCREPANCIES TO THE CONTRACT ADMINISTRATOR PRIOR TO COMMENCING WORK.



**LOCATION APPROVED UNDERGROUND STRUCTURES**

SUPR. U/G STRUCTURES DATE COMMITTEE

**NOTE:** LOCATION OF UNDERGROUND STRUCTURES AS SHOWN ARE BASED ON THE BEST INFORMATION AVAILABLE. BUT NO GUARANTEE IS GIVEN THAT ALL EXISTING UTILITIES ARE SHOWN OR THAT THE GIVEN LOCATIONS ARE EXACT. CONFIRMATION OF EXISTENCE AND EXACT LOCATION OF ALL SERVICES MUST BE OBTAINED FROM THE INDIVIDUAL UTILITIES BEFORE PROCEEDING WITH CONSTRUCTION.

NO.	REVISIONS	YYMMDD	BY
0	ISSUED FOR TENDER	11/07/27	KC

<b>AECOM</b>		PROFESSIONAL'S SEAL	
DESIGNED BY	MK	CHECKED BY	EBL/ARB
DRAWN BY	KC	APPROVED BY	EBL
HOR. SCALE	AS NOTED	RELEASED FOR CONSTRUCTION	
VERT. SCALE	AS NOTED	DATE	

ORIGINAL SIGNED BY  
ANDREW BROMLEY  
2011, 07, 28

CONSULTANT DRAWING NO.  
60216082-S-102\_RX.dwg

BID OPPORTUNITY NO. 632-2011

**THE CITY OF WINNIPEG PUBLIC WORKS DEPARTMENT**

**ELM PARK PEDESTRIAN BRIDGE REHABILITATION**

DEMOLITION

CITY DRAWING NUMBER	B131-11-07
SHEET	03 OF 13
REV	03