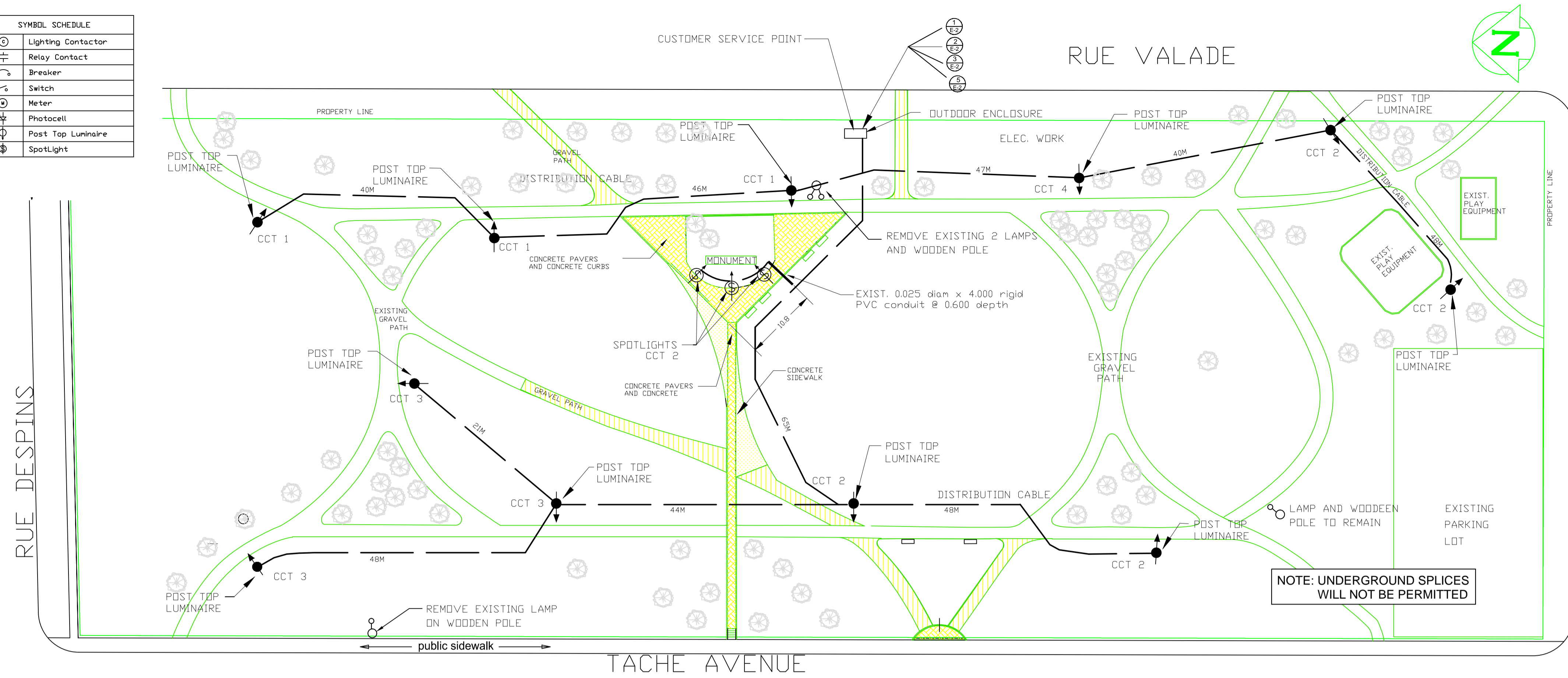
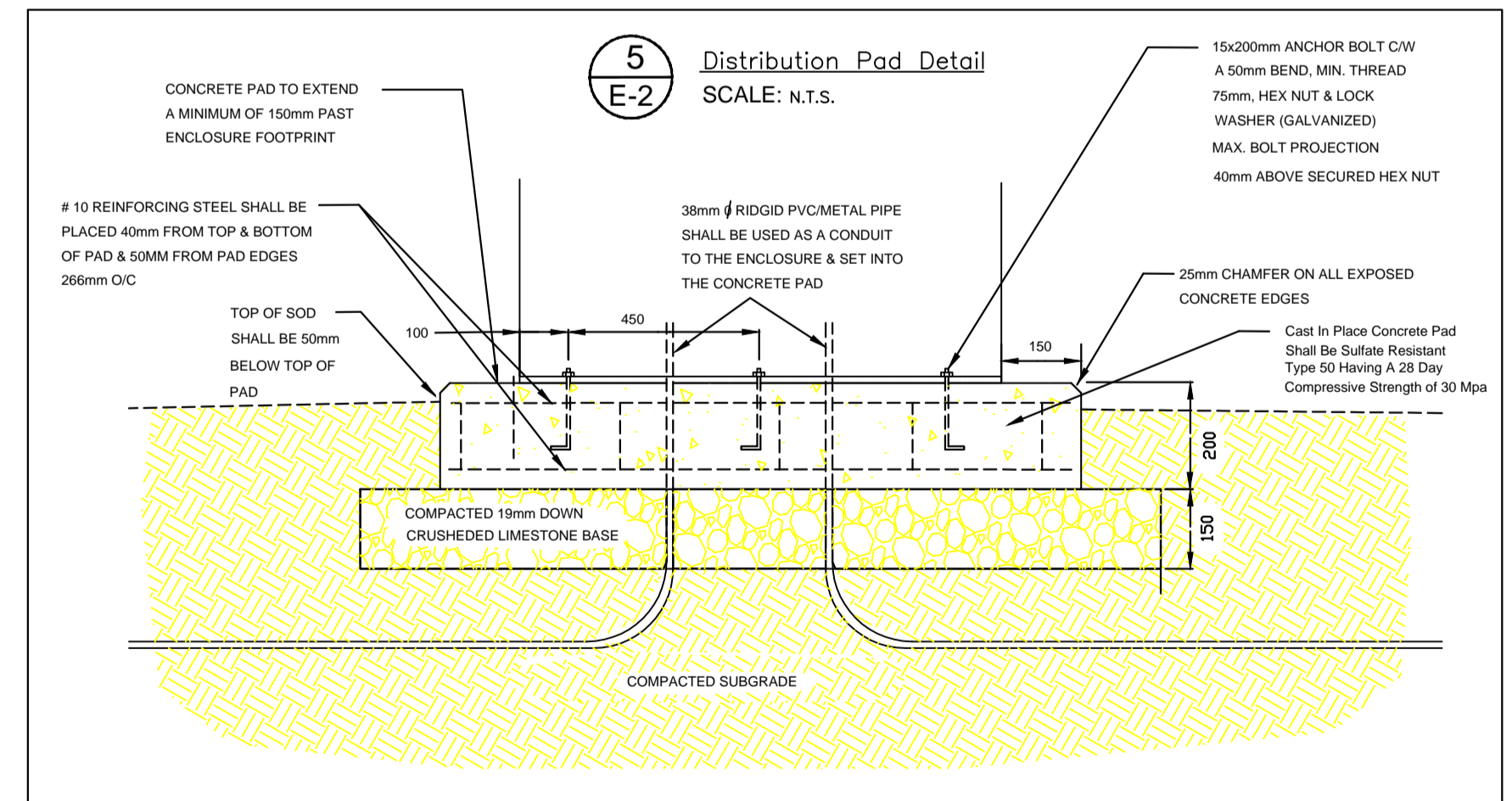
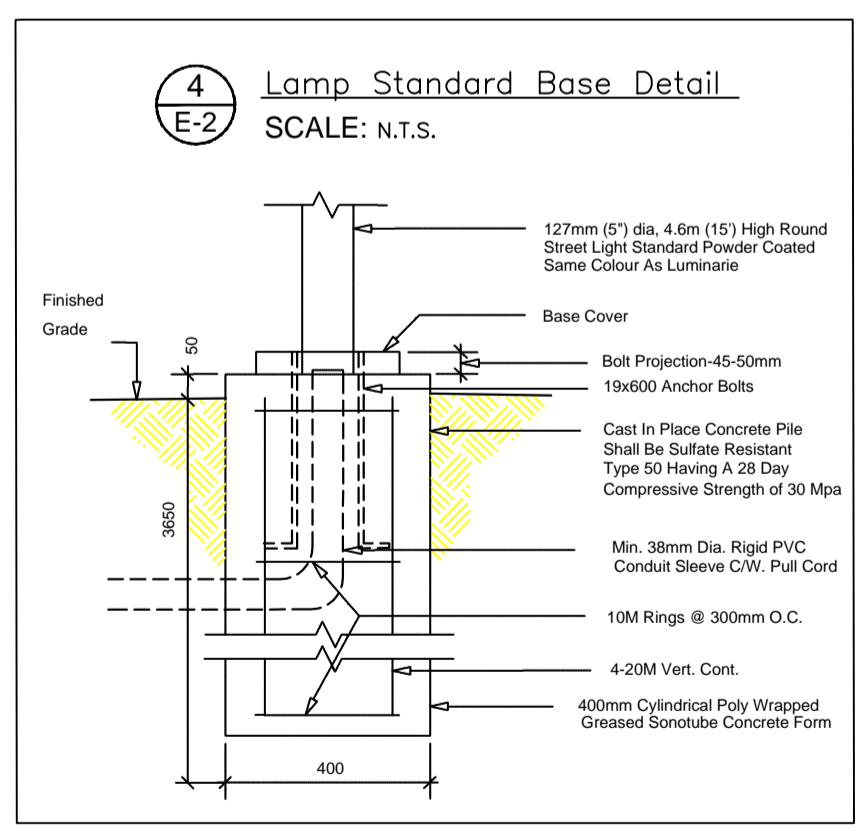
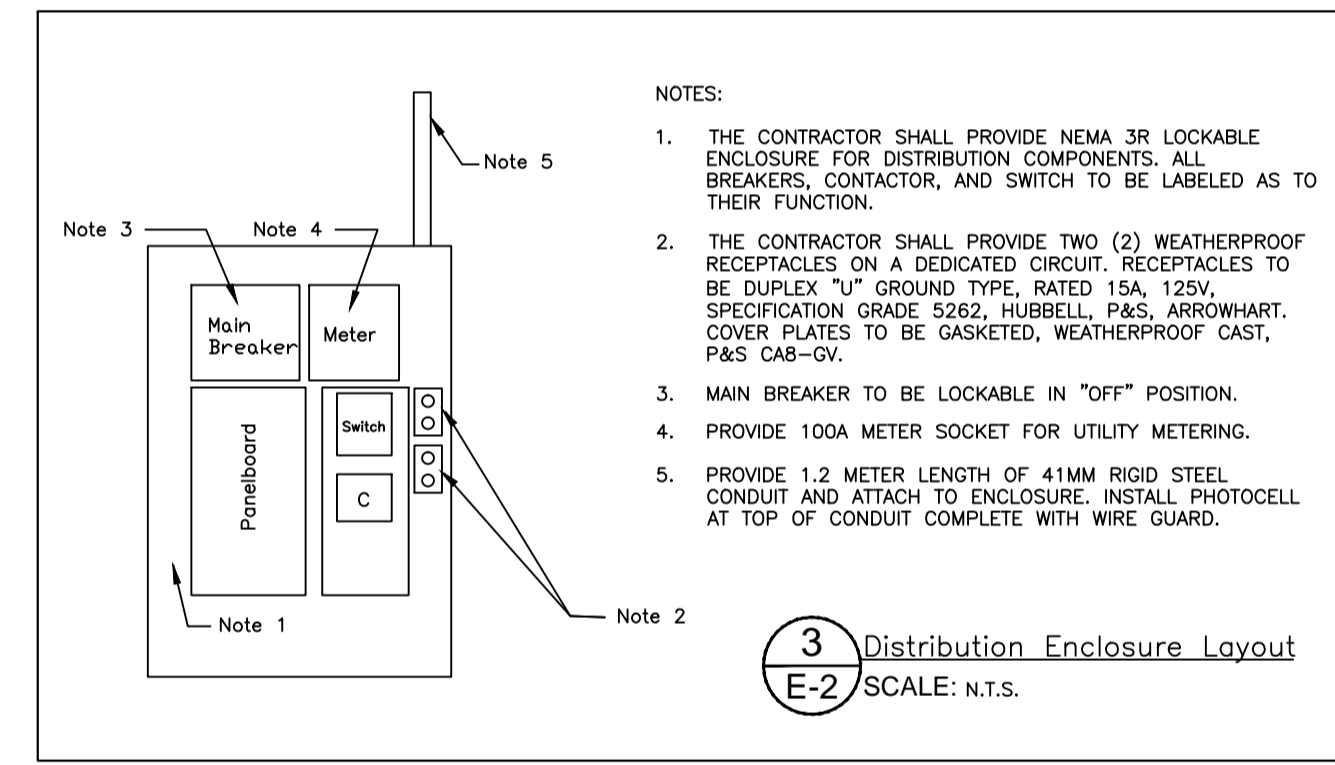
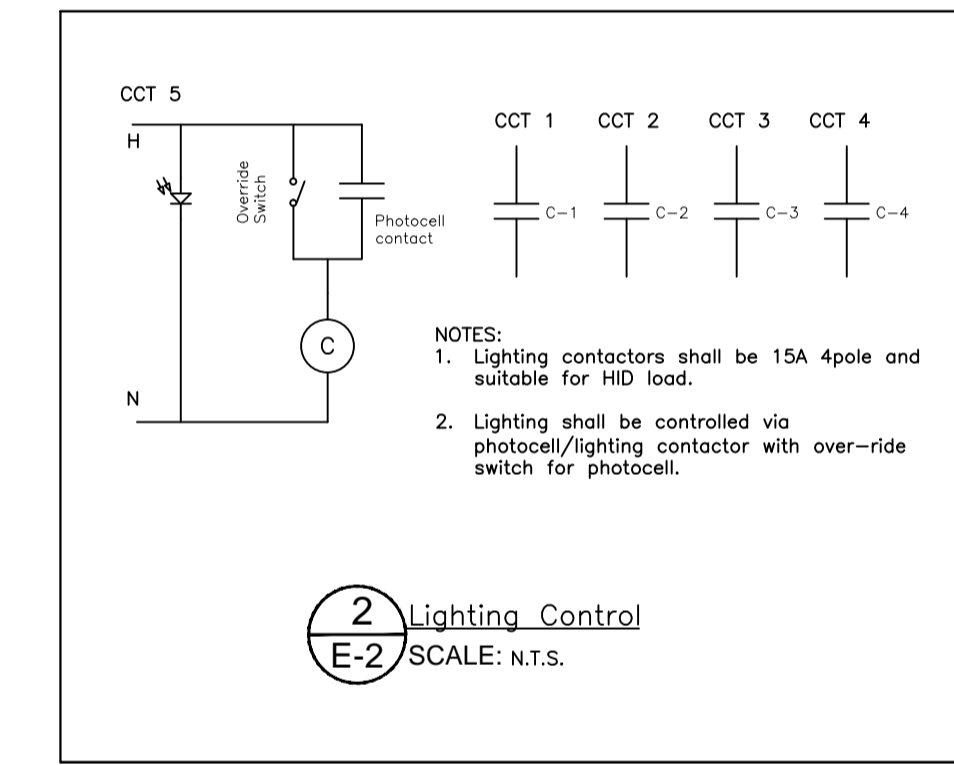
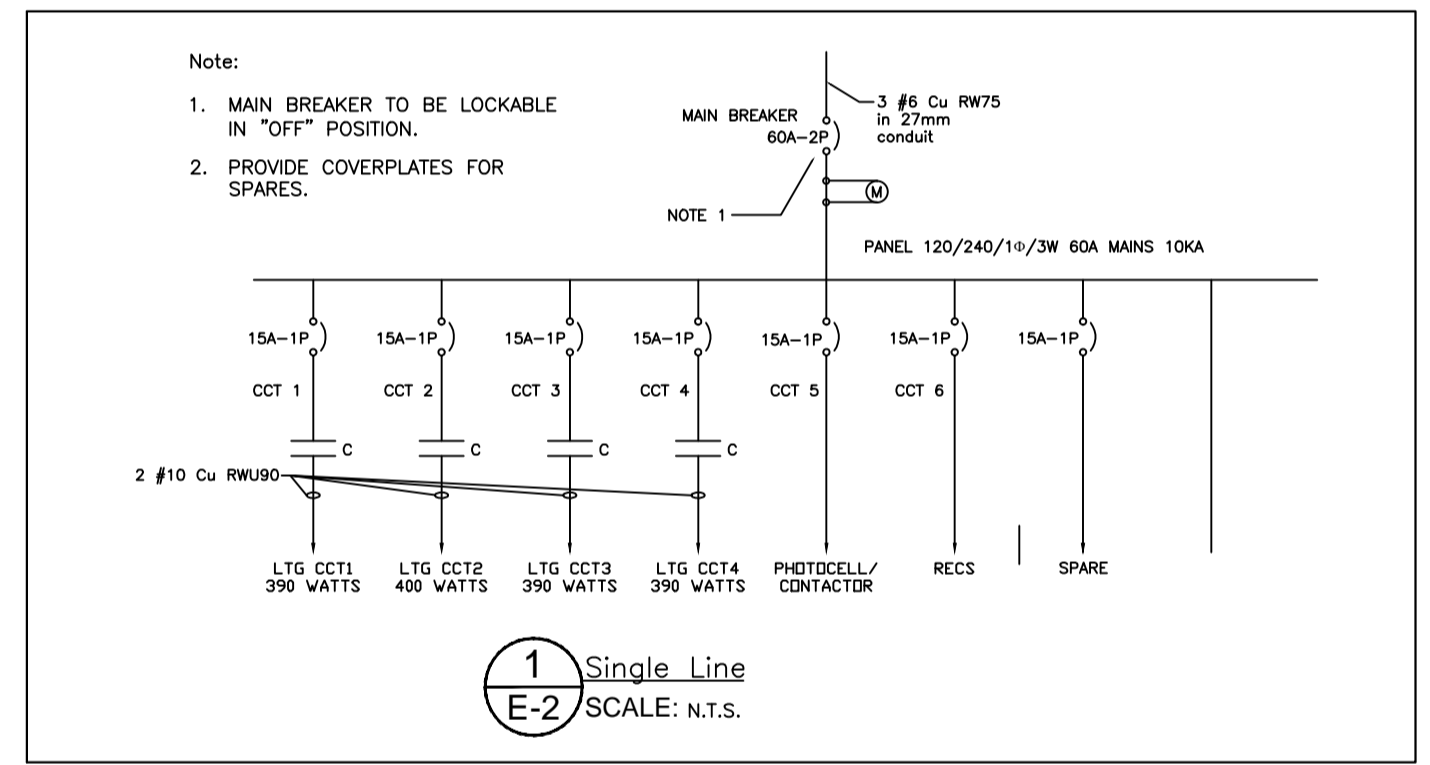


SYMBOL SCHEDULE	
	Lighting Contactor
	Relay Contact
	Breaker
	Switch
	Meter
	Photocell
	Post Top Luminaire
	SpotLight

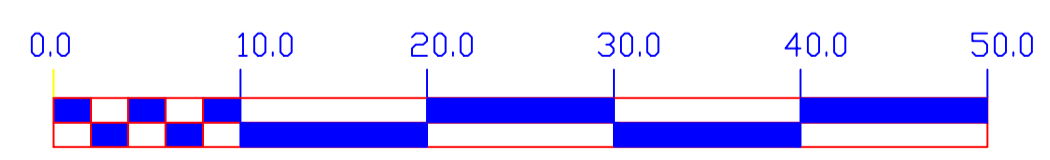


SUMMARY OF ELECTRICAL WORK

- PATHWAY AND DECORATIVE LIGHTING IS TO BE INSTALLED FOR LA VERENDRYE PARK. THE LIGHTING WILL CONSIST OF 11 x 100W HPS POST TOP LUMINAIRES INSTALLED ADJACENT TO THE PATHWAY AND 3 x 39W CMI SPOTLIGHTS TO ILLUMINATE THE STATUE. ALL LIGHTING TO BE CONTROLLED VIA AN OUTDOOR DISTRIBUTION CABINET C/W PHOTOCELL. CONTRACTOR SHALL BE RESPONSIBLE FOR LIAISING WITH MANITOBA HYDRO FOR THE INSTALLATION OF A CUSTOMER SERVICE POINT AT THE EAST SIDE OF THE PARK. MANITOBA HYDRO CONTACT TD 609MAY 635-4270
- SPOT LIGHTS TO BE GARDED.
 - SPOTS-U-PAR30-35/39MH-120-BPR-OR APPROVED EQUAL. SPOTLIGHTS TO BE INSTALLED IN POURED CONCRETE BLOCK. BLOCK TO BE RECESSED FLUSH WITH GRADE 30mm x 30mm x 30mm MINIMUM COMPLETE WITH LOCKABLE GALVANIZED WIRE CAGE AND ANCHORED INTO CONCRETE. CONTACT HUNTER WIRE FOR APPROV. THRU SYMBOL INDICATE AIMING ANGLE.
 - POST TOP LUMINAIRES TO BE VANDAL-RESISTANT SDI LIGHTING VPR0-LR2-100S-120/240-H1-PC/8G. LUMINAIRES TO BE MOUNTED ON 20 FOOT STEEL POLES. POLES TO BE INSTALLED IN POURED CONCRETE BASES REFER TO DETAIL 4 E-2. NOTE THAT BASE TO EXTEND 50mm ABOVE GRADE.
 - CONTRACTOR TO PROVIDE NEMA 3R LOCKABLE OUTDOOR ENCLOSURE TO HOUSE ALL ELECTRICAL COMPONENTS. REFER TO DETAIL 3 E-2.
 - OUTDOOR ENCLOSURE TO INSTALLED ON STRUCTURAL CONCRETE REINFORCED PAD TO EXTEND A MINIMUM OF 150mm PAST ENCLOSURE FOOTPRINT. DETAIL 5 E-2. CONFIRM EXACT LOCATION OF PAD WITH CONTRACT ADMINISTRATOR PRIOR TO COMMENCING WORK.
 - CONTRACTOR SHALL BE RESPONSIBLE FOR ALL COSTS AND PROVIDE ALL REQUIREMENTS OF MANITOBA HYDRO TO PROVIDE A 120/240V 100A CUSTOMER SERVICE POINT AT DISTRIBUTION ENCLOSURE AS INDICATED. THE CONTRACTOR MUST CARRY ALL COSTS ASSOCIATED WITH THE REMOVAL OF 2 HYDRO PARK LIGHTS AND POLES. ONE EXISTING POLE WILL REMAIN TO FACILITATE THE FEED TO THE BUS SHELTER AT THE SOUTH WEST CORNER OF THE PARK.
 - ALL LUMINAIRE LOCATIONS TO BE CONFIRMED BY CONTRACT ADMINISTRATOR (TODNI BUS 986-3781 OR CELL 803-3351) PRIOR TO COMMENCING WORK.
 - CONTRACTOR SHALL INFORM THE CONTRACT ADMINISTRATOR AT LEAST FIVE DAYS IN ADVANCE OF POURING THE BASES TO ALLOW THE CONTRACT ADMINISTRATOR TO VERIFY LOCATIONS AND WITNESS PROCESSES. THE CONTRACTOR TO ALSO INFORM THE CONTRACT ADMINISTRATOR AT LEAST FIVE DAYS IN ADVANCE OF THE TRENCHING TO ALLOW THE CONTRACT ADMINISTRATOR TO WITNESS THE PROCESS.
 - ALL DIMENSIONS IN METERS UNLESS INDICATED OTHERWISE.
 - THE CONTRACTOR UPON COMPLETION OF THE JOB MEET THE CONTRACT ADMINISTRATOR ON SITE DURING THE EVENING FOR THE PURPOSE OF DIMMING THE LIGHTS. THE CONTRACTOR TO PROVIDE MANPOWER AND EQUIPMENT TO ROTATE THE LUMINAIRES TO ENSURE THAT LIGHTING DISTRIBUTION IS APPROPRIATELY AIMED WITH RESPECT TO PATHWAY.
- TRENCHING**
- CONTRACTOR TO PROVIDE TRENCHING REQUIRED TO POWER ALL LUMINAIRES. DEPTH TO BE MINIMUM 600mm PER ELECTRICAL CODE. WIRING TO BE DIRECT-BURY RWJ. PROVIDE MINIMUM 150mm SAND ABOVE AND BELOW WIRING. MAINTAIN ACCURATE LOCATIONS OF TRENCHING FOR INCLUSION ON AS-BUILT DRAWINGS. CONTRACTOR TO COORDINATE TRENCHING WITH CONTRACT ADMINISTRATOR AND OTHER ON SITE CONTRACTORS COMPLETING LANDSCAPE WORK.
- CONTRACTOR TO PROVIDE SDIL COMPACTION TO 95% PROCTOR DENSITY. RE-SDD AS REQUIRED IN ACCORDANCE WITH THE CITY OF WINNIPEG STANDARD CONSTRUCTION SPECIFICATIONS CW 3510 TO RETURN AREA TO ORIGINAL CONDITION.
- GENERAL**
- THE ELECTRICAL SYSTEM SHALL COMPLY WITH THE REQUIREMENTS OF THE LATEST EDITION OF THE CANADIAN ELECTRICAL CODE (CEC) AND WITH ALL PROVINCIAL AND MUNICIPAL LAWS, RULES AND ORDINANCES.
 - THE CONTRACTOR SHALL PROVIDE ALL MATERIALS, LABOUR AND EQUIPMENT NECESSARY FOR INSTALLING, TESTING AND PLACING IN INITIAL OPERATION THE COMPLETE ELECTRICAL SYSTEM.
 - EXAMINE ALL PLANS AND SPECIFICATIONS PERTAINING TO THIS CONTRACT. NOTIFY CONTRACT ADMINISTRATOR OF ERRORS OR OMISSIONS BEFORE SUBMITTING THE PRICE. FILING SUCH NOTIFICATION THIS CONTRACTOR SHALL MEET ALL SUCH REQUIREMENTS WITHOUT EXTRA COST TO THE CITY.
 - THE CONTRACTOR SHALL OBTAIN ALL NECESSARY PERMITS. PAY ALL NECESSARY FEES AND GIVE ALL NECESSARY NOTICES.
 - ALL EQUIPMENT SUPPLIED UNDER THIS CONTRACT SHALL BE NEW AND SHALL BE CSA AND LOCALLY APPROVED.
 - ALL WORK SHALL BE LAID OUT IN ITS MECHANICAL APPEARANCE. IT SHALL BE LOGICALLY ARRANGED FOR SIMPLICITY OF ACCESSIBILITY AND ELECTRICAL EFFICIENCY.
 - THE CONTRACTOR SHALL PROVIDE LAMACOID NAMEPLATES FOR ALL ELECTRICAL DISTRIBUTION EQUIPMENT/DEVICES AND MOUNT NAME PLATES ON ALL EQUIPMENT TO INDICATE FUNCTION VOLTAGE AND POWER OF DEVICES.
 - THIS SPECIFICATION IS NOT INTENDED TO RESTATE THE APPLICABLE CODES. THE CONTRACTOR WILL BE RESPONSIBLE FOR PROVIDING ALL GROUNDING, ETC. AND FOLLOWING ALL WIRING METHODS.
 - THE CONTRACTOR SHALL EXAMINE THE CONDITIONS OF THE SITE AND SHALL BE RESPONSIBLE FOR ALL EQUIPMENT, MATERIAL, AND LABOUR NECESSARY FOR THE WORK REQUIRED FOR THIS PROJECT.
 - PRIOR TO SCHEDULING FINAL INSPECTION THE CONTRACTOR SHALL ENSURE THAT ALL WORK IS COMPLETED AND IN PARTICULAR THAT OPERATION AND MAINTENANCE MANUALS ARE COMPLETED, ALL NAMEPLATES INSTALLED, VERIFICATION TESTS HAVE BEEN DONE AND CERTIFICATES HAVE BEEN RECEIVED THAT INDICATE WORK INSTALLED CONFORMS TO ALL REQUIREMENTS.
 - ALL TREES WITHIN THE CONSTRUCTION AREA MUST BE PROTECTED FOR THE DURATION OF THE CONSTRUCTION PERIOD IN ACCORDANCE WITH SECTION 3.19(CW 1130 SITE REQUIREMENTS) CITY OF WINNIPEG STANDARD CONSTRUCTION SPECIFICATIONS.
- DELIVERABLES**
- THE CONTRACTOR SHALL MAINTAIN ONE SET OF PLANS AT JOB SITE WHICH HE SHALL CLEARLY NOTE ALL CHANGES OR DEVIATIONS FROM THE CONTRACT DOCUMENT AS THE JOB PROGRESSES. THE CONTRACTOR SHALL SUBMIT THREE SETS OF AS-BUILT DRAWINGS TO THE CONTRACT ADMINISTRATOR ON COMPLETION OF THE JOB.
- WARNING**
- IF POWER EQUIPMENT OR EXPLOSIVES ARE TO BE USED FOR EXCAVATION ON THIS PROJECT THE CONTRACTOR MUST:
- NOTIFY THE GAS COMPANY OF THE PROPOSED LOCATION OF EXCAVATION.
 - TAKE PRECAUTION TO AVOID DAMAGE TO GAS COMPANY INSTALLATIONS.
- SEE PROVINCIAL REGULATION 210/72 FOR DETAILS



METRIC
WHOLE NUMBERS INDICATE MILLIMETRES
DECIMALIZED NUMBERS INDICATE METRES



200 WM	WATERMAIN	200 WM	SL, HYDRO	150 WM	WATERMAIN	150 WM
	HYDRANT		MTS		HYDRANT	
	VALVE		TRAFFIC SIGNALS		VALVE	
	LAND DRAINAGE SEWER		GAS		LAND DRAINAGE SEWER	
	WASTEWATER SEWER		SURVEY BAR		WASTEWATER SEWER	
	MANHOLE		POLE TOP LUMINAIRES		TOP OF ASPHALT	
	CATCH BASIN		EXIST. POLE TOP LUMINAIRES		TOP OF LIMESTONE BASE	
	CURB INLET		PROP. POLE & LUMINAIRE			
	REDUCER		PROP. BASE, POLE & LUMINAIRE			
	COUPLER		BURIED LIGHT CABLE			
	ANODE		TREE			
	LEGEND-PLAN		LEGEND-PLAN		LEGEND-PROFILE	

LOCATION APPROVED	B.M. ELEV.	FIELD BOOK #
UNDERGROUND STRUCTURES		
SUPV. U/G STRUCTURES COMMITTEE		
DATE		
NOTE: LOCATION OF UNDERGROUND STRUCTURES AS SHOWN ARE BASED ON THE BEST INFORMATION AVAILABLE BUT NO GUARANTEE IS GIVEN THAT ALL EXISTING UTILITIES ARE SHOWN OR THAT THE GIVEN LOCATIONS ARE EXACT. CONFIRMATION OF EXISTENCE AND EXACT LOCATION OF ALL SERVICES MUST BE OBTAINED FROM THE INDIVIDUAL UTILITIES BEFORE PROCEEDING WITH CONSTRUCTION.		
ND. REVISIONS	DATE	BY

CITY OF WINNIPEG PARKS WATERWAYS AND COMMUNITY INITIATIVES	
DESIGNED BY	TB
CHECKED BY	RZ
DRAWN BY	TB
APPROVED BY	RZ
HOR. SCALE	1:400
VERTICAL	
RELEASED FOR CONSTRUCTION	
DATE	JULY 20, 2011
DATE	JUNE 20, 2010

LANDSCAPE ARCHITECT'S/ ENGINEER'S SEAL

THE CITY OF WINNIPEG
Planning, Property and Development Department
Parks, Waterways and Community Initiatives
Unit 15-30 Fort Street

LA VERENDRYE PARK
PATHWAY LIGHTING

SHEET 1 OF 1
CITY DRAWING NUMBER L.37-E

BID OPPORTUNITY FILE NAME: PLOT DATE: