

NEW FLOORING/FINISHES: GENERAL NOTES

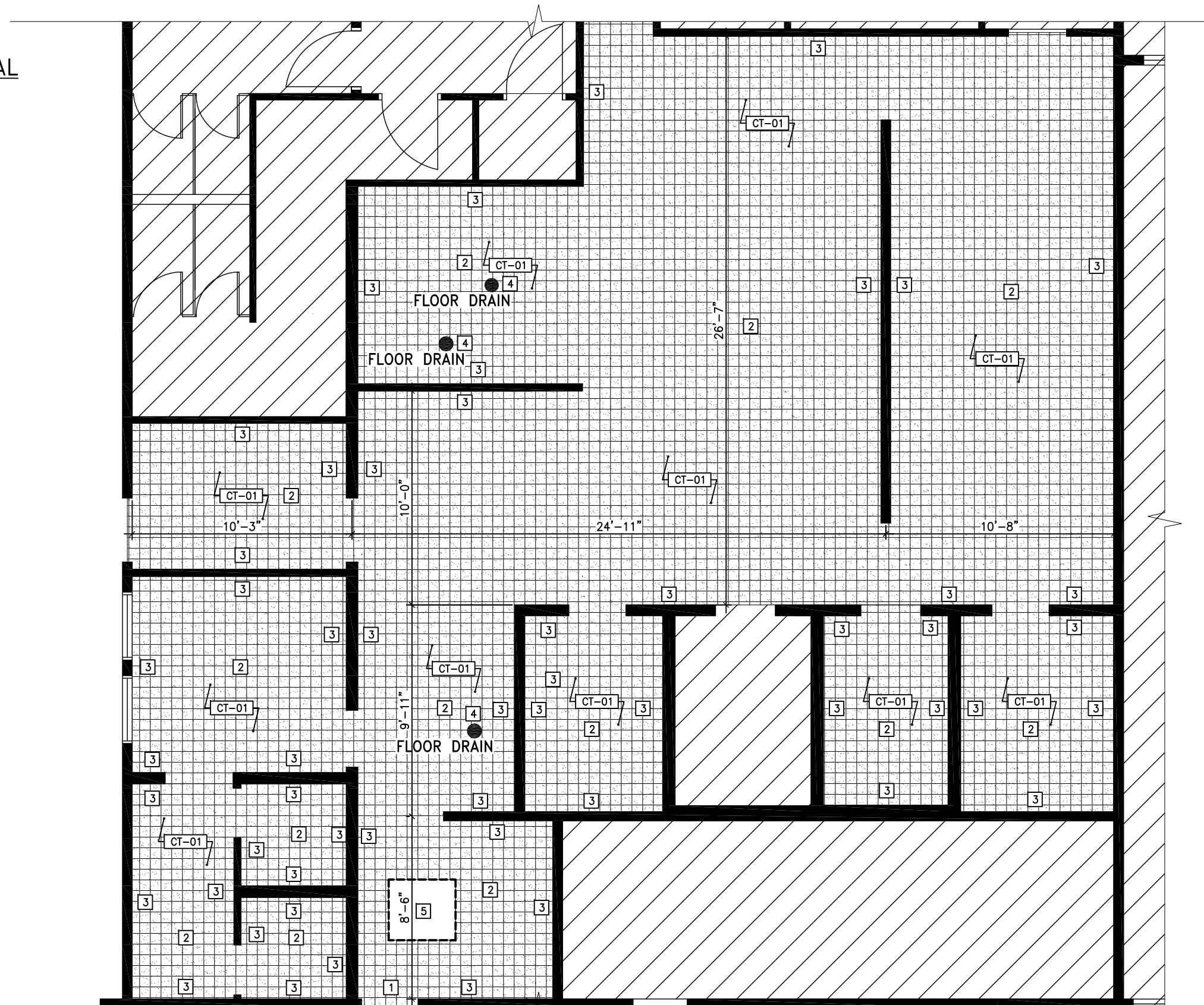
1. CONTRACTOR TO ENSURE SITE IS CLEAN AND READY TO ACCEPT INSTALLATION OF NEW FINISHES.
2. ALL MATERIALS FOR INSTALLATION ADHESIVE AS PER MANUFACTURER'S RECOMMENDATION AND SPECIFICATIONS FOR THE INTENDED USAGE.
3. CONTRACTOR TO SUPPLY AND INSTALL NEW CERAMIC TILE AND WALL BASE AS INDICATED ON NEW FLOORING/FINISHES PLAN.

FLOOR FINISH LEGEND:

- CT-01** CERAMIC / QUARRY TILE TO BE:
 OLYMPIA TILE
 METROPOLITAN SERIES
 STONE GREY 57X
 MT.STONE.GREY.6x6
 DIMENSIONS: 6" X 6"
- GROUT TO BE:
 MAPEI
 KERAPOXY IEG EPOXY GROUT
 #09 GRAY
- CT-02** COVE BASE TO BE:
 OLYMPIA TILE
 METROPOLITAN SERIES
 Q3565 or Q3565 L/R (DEPENDING ON WALL LOCATION)
 DIMENSIONS: 6" X 6"
- GROUT TO BE:
 MAPEI
 KERAPOXY IEG EPOXY GROUT
 #09 GRAY

FLOORING NOTES: KEY NOTE LEGEND

1. CONTRACTOR TO SUPPLY AND INSTALL TRANSITION STRIP AT ALL FLOOR CHANGES.
2. CONTRACTOR TO SUPPLY AND INSTALL NE CT AS INDICATED PER MANUFACTURER'S RECOMMENDED INSTALLATION INSTRUCTIONS
3. CONTRACTOR TO SUPPLY AND INSTALL NEW CT COVE BASE AT ALL WALL LOCATIONS THROUGHOUT CONTRACT AREA PER MANUFACTURER'S RECOMMENDED INSTALLATION INSTRUCTIONS.
4. CONTRACTOR TO RE-SLOPE FLOORS TOWARD NEAREST DRAIN AS NECESSARY TO ENSURE EFFICIENT WATER FLOW.
5. FLOOR ACCESS PANEL TO REMAIN. NEW CT TO BE INSTALLED FLUSH TO ACCESS PANEL. CONTRACTOR TO MAKE ALL ADJUSTMENTS NECESSARY. PROVIDE METAL EDGE PROTECTION (SCHLUTER OR EQUIVALENT) TO SUIT TILES.



1 NEW FLOORING PLAN – KITCHEN AREA
 ID-3.0 SCALE: 3/16" = 1'-0"