

- REFERENCE NOTES**
- A. PAVEMENT DIMENSIONS ARE TO BACK OF CURB
 - B. BASELINE IS CENTRE LINE RIGHT-OF-WAY
 - C. PROPERTY LINES OBTAINED FROM CITY OF WINNIPEG L.B.I.S., AND NO SCALE FACTOR WAS APPLIED
 - D. REFER TO AECOM FIELD BOOK NO. 4700

- CONSTRUCTION NOTES**
1. REMOVE EXISTING CONCRETE PAVEMENT AND CONSTRUCT NEW 100mm ASPHALTIC PAVEMENT (TYPE 1A)
 2. REMOVE EXISTING CONCRETE PAVEMENT AND CONSTRUCT NEW 150mm REINFORCED CONCRETE PAVEMENT c/w 50mm ASPHALT OVERLAY (TYPE 1A)
 3. REMOVE EXISTING CONCRETE PAVEMENT AND CONSTRUCT NEW 150mm REINFORCED CONCRETE PAVEMENT
 4. REMOVE AND REINSTALL EXISTING PAVING STONES AND CONSTRUCT 150mm HT. CONCRETE BARRIER CURB EDGING
 5. CONSTRUCT NEW BARRIER CURB AND GUTTER (180mm HT.)
 6. CONSTRUCT NEW LIP CURB AND GUTTER (40mm HT.)
 7. CONSTRUCT NEW CURB RAMP AND GUTTER (10mm HT. INTEGRAL)
 8. INSTALL NEW CURB AND GUTTER INLET c/w CATCH BASIN (SD-024) AND CONNECT NEW 250mm LEAD TO EXISTING LDS
 9. REMOVE EXISTING COVER AND PLACE NEW SOLID COVER (AP-005)
 10. REMOVE EXISTING CURB INLET
 11. REMOVE EXISTING CATCHBASIN
 12. INSTALL 150mm SUBDRAIN
 13. ADJUST EXISTING MANHOLE/CATCH BASIN TO GRADE
 14. INSTALL NEW CAST IRON RISER RING
 15. ADJUST EXISTING WATER VALVE TO GRADE
 16. RENEW EXISTING CONCRETE SIDEWALK
 17. ADJUST EXISTING CURB STOP
 18. INSTALL NEW CURB AND GUTTER INLET c/w CATCHPIT (SD-023) AND CONNECT NEW 250mm LEAD TO EXISTING CATCHBASIN
 19. CONSTRUCT NEW MODIFIED BARRIER CURB AND GUTTER (180mm HT.)



METRIC
WHOLE NUMBERS INDICATE MILLIMETRES
DECIMALIZED NUMBERS INDICATE METRES

EXISTING	LEGEND - PLAN	PROPOSED	EXISTING	LEGEND - PLAN	PROPOSED	EXISTING	LEGEND - PROFILE	PROPOSED
150 mm W.M.	WATERMAIN	150 mm W.M.	---	HYDRO	---	---	C PROFILE	---
Hydrant	HYDRANT	Hydrant	---	M.T.S.	---	---	NORTH/WEST GUTTER	---
Valve	VALVE	Valve	---	CONCRETE	---	---	SOUTH/EAST GUTTER	---
300mm L.D.S.	LAND DRAINAGE SEWER	300mm L.D.S.	---	ASPHALT	---	---	N/W PROPERTY LINE	---
250mm W.W.S.	WASTEWATER SEWER	250mm W.W.S.	---	PROPERTY LINE	---	---	S/E PROPERTY LINE	---
Manhole	MANHOLE	Manhole	---	SURVEY BAR	---	---		
Catch Basin	CATCH BASIN	Catch Basin	---	ELEVATION	---	---		
Curb Inlet	CURB INLET	Curb Inlet	---	TREE	---	---		
Junctions	JUNCTIONS	Junctions	---	SIDEWALK RAMP	---	---		
Culvert	CULVERT	Culvert	---	CONCRETE SIDEWALK	---	---		
Gas	GAS	Gas	---	FENCE	---	---		

LOCATION APPROVED UNDERGROUND STRUCTURES

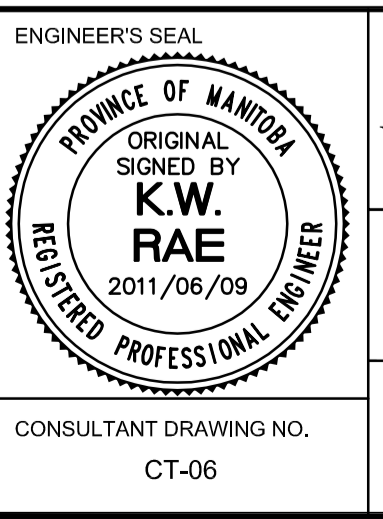
SUPV. U/G STRUCTURES COMMITTEE DATE

NOTE:
LOCATION OF UNDERGROUND STRUCTURES AS SHOWN ARE BASED ON THE BEST INFORMATION AVAILABLE. BUT NO GUARANTEE IS GIVEN THAT ALL EXISTING UTILITIES ARE SHOWN OR THAT THE GIVEN LOCATIONS ARE EXACT. CONFIRMATION OF EXISTENCE AND EXACT LOCATION OF ALL SERVICES MUST BE OBTAINED FROM THE INDIVIDUAL UTILITIES BEFORE PROCEEDING WITH CONSTRUCTION.

B.M. 82-016	N. side Killarney Ave. E. of Greyfriars Rd., Tbl. in S. Conc. foundation of Acadia Junior High School.		
ELEV. 234.106	0.2m E. & 0.1m below tyndall of S.W. Cor. of school.		
0	ISSUED FOR TENDER	2011/06/09	BC
A	ISSUED FOR REVIEW	2011/06/03	BC
NO.	REVISIONS	DATE	BY

This drawing has been prepared for the use of AECOM's client and may not be used, reproduced or relied upon by third parties, except as agreed by AECOM and its client, as required by law or for use by governmental reviewing agencies. AECOM accepts no responsibility, and denies any liability whatsoever, to any party that modifies this drawing without AECOM's express written consent. Do not scale this document. All measurements must be obtained from stated dimensions.

DESIGNED BY	BC	CHECKED BY	TDW
DRAWN BY	RAM	APPROVED BY	KWR
HOR. SCALE:	1:250	RELEASED FOR CONSTRUCTION BY:	
VERTICAL:	1:10	DATE	2011/03/30



THE CITY OF WINNIPEG
PUBLIC WORKS DEPARTMENT
ENGINEERING DIVISION

2011 LOCAL STREET RENEWAL PROGRAM

ACADIA BAY- KILLARNEY AVE. TO KILLARNEY AVE.
PAVEMENT RECONSTRUCTION
KILLARNEY AVE. TO STATION 2+30 PLAN/PROFILE

CITY DRAWING NUMBER
SHEET 1 OF 4