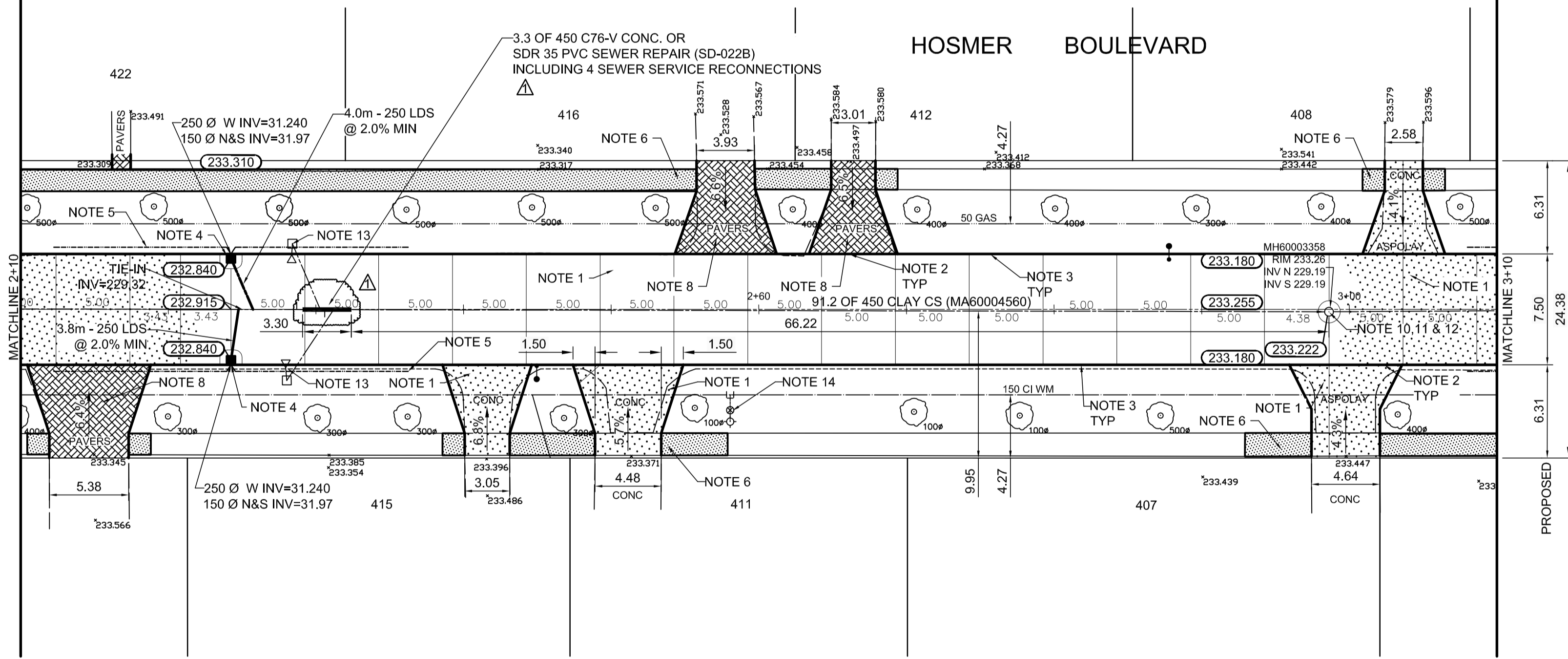


SEWER JUNCTION INFORMATION*

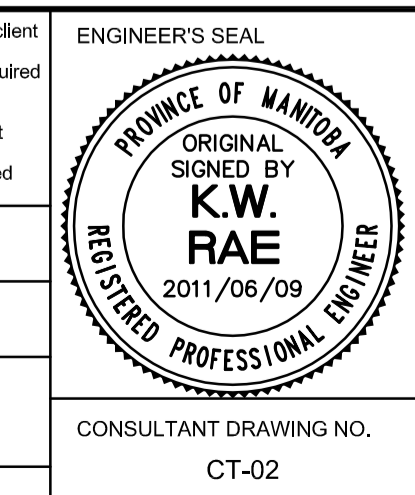
REF MH	DIST FROM REF MH	SIZE	CLOCK AT
MH60003356	3.50	150ø	02
MH60003356	21.30	100ø	11
MH60003356	22.90	150ø	01
MH60003356	23.20	100ø	02
MH60003356	23.80	150ø	01
MH60003356	36.20	100ø	11
MH60003356	50.60	100ø	02
MH60003356	54.90	100ø	01
MH60003356	67.00	100ø	11
MH60003356	81.20	100ø	01
MH60003356	82.00	100ø	11

*JUNCTION INFORMATION FROM VIDEO INSPECTION



- REFERENCE NOTES**
- PAVEMENT DIMENSIONS ARE TO BACK OF CURB
 - BASELINE IS CENTRE LINE RIGHT-OF-WAY
 - PROPERTY LINES OBTAINED FROM CITY OF WINNIPEG L.B.I.S., AND NO SCALE FACTOR WAS APPLIED
 - REFER TO AECOM FIELD BOOK NO. 4695

- CONSTRUCTION NOTES**
- REMOVE EXISTING PAVEMENT AND CONSTRUCT NEW 150mm REINFORCED CONCRETE PAVEMENT
 - CONSTRUCT NEW LIP CURB (40mm HT, INTEGRAL)
 - CONSTRUCT NEW BARRIER CURB (180mm HT, SEPARATE)
 - INSTALL NEW CURB AND GUTTER INLET c/w CATCH BASIN (SD-024) AND CONNECT NEW 250mm LEAD TO EXISTING 450mm COMBINED SEWER
 - INSTALL 150mm SUBDRAIN
 - RENEW EXISTING 100mm CONCRETE SIDEWALK
 - CONSTRUCT NEW 150mm REINFORCED CONCRETE PAVEMENT C/W 50mm TYPE 1A ASPHALT PAVEMENT
 - REMOVE AND REINSTALL EXISTING PAVING STONE AND CONSTRUCT NEW 150mm HT, CONCRETE CURB EDGING
 - CONSTRUCT NEW MODIFIED BARRIER CURB (180mm HT, INTEGRAL)
 - REMOVE EXISTING FRAME AND COVER AND PLACE NEW FRAME AND COVER (AP-005)
 - ADJUST EXISTING MANHOLE/CATCHBASIN TO GRADE
 - INSTALL NEW CAST IRON LIFTER RING
 - REMOVE EXISTING CATCHBASIN AND CURB INLET AND PLUG EXISTING LEAD
 - ADJUST EXISTING WATER VALVE TO GRADE



THE CITY OF WINNIPEG
PUBLIC WORKS DEPARTMENT
ENGINEERING DIVISION

2011 LOCAL STREET RENEWAL PROGRAM

HOSMER BLVD - MOUNTBATTEN AVE. TO CUTHBERTSON AVE
PAVEMENT RECONSTRUCTION
STATION 2+10 TO STATION 3+10 PLAN/PROFILE

CITY DRAWING NUMBER
SHEET 2 OF 3

EXISTING	LEGEND - PLAN	PROPOSED	EXISTING	LEGEND - PLAN	PROPOSED	EXISTING	LEGEND - PROFILE	PROPOSED
150mm W.M.	WATERMAIN	150mm W.M.	HYDRO	HYDRO	HYDRO	---	C PROFILE	---
300mm L.D.S.	LAND DRAINAGE SEWER	300mm L.D.S.	CONCRETE	CONCRETE	CONCRETE	---	NORTH/WEST GUTTER	---
250mm W.W.S.	WASTEWATER SEWER	250mm W.W.S.	ASPHALT	ASPHALT	ASPHALT	---	SOUTH/EAST GUTTER	---
MANHOLE	MANHOLE	MANHOLE	PROPERTY LINE	PROPERTY LINE	PROPERTY LINE	---	N/W PROPERTY LINE	---
CATCH BASIN	CATCH BASIN	CATCH BASIN	SURVEY BAR	SURVEY BAR	SURVEY BAR	---	S/E PROPERTY LINE	---
CURB INLET	CURB INLET	CURB INLET	ELEVATION	ELEVATION	ELEVATION	---		
JUNCTIONS	JUNCTIONS	JUNCTIONS	TREE	TREE	TREE	---		
CULVERT	CULVERT	CULVERT	SIDEWALK RAMP	SIDEWALK RAMP	SIDEWALK RAMP	---		
GAS	GAS	GAS	CONCRETE SIDEWALK	CONCRETE SIDEWALK	CONCRETE SIDEWALK	---		
			FENCE	FENCE	FENCE	---		

LOCATION APPROVED UNDERGROUND STRUCTURES

SUPV. U/G STRUCTURES COMMITTEE DATE

NOTE:
LOCATION OF UNDERGROUND STRUCTURES AS SHOWN ARE BASED ON THE BEST INFORMATION AVAILABLE. BUT NO GUARANTEE IS GIVEN THAT ALL EXISTING UTILITIES ARE SHOWN OR THAT THE GIVEN LOCATIONS ARE EXACT. CONFIRMATION OF EXISTENCE AND EXACT LOCATION OF ALL SERVICES MUST BE OBTAINED FROM THE INDIVIDUAL UTILITIES BEFORE PROCEEDING WITH CONSTRUCTION.

NO.	REVISIONS	DATE	BY
1	ADDENDUM 1 SEWER REPAIRS	2011/06/17	BC
0	ISSUED FOR TENDER	2011/06/09	BC
A	ISSUED FOR REVIEW	2011/06/03	BC

DESIGNED BY	BC	CHECKED BY	TDW
DRAWN BY <td>SS</td> <td>APPROVED BY</td> <td>KWR</td>	SS	APPROVED BY	KWR
HOR. SCALE:	1:250	RELEASED FOR CONSTRUCTION BY:	
VERTICAL:	1:10		
DATE	2011/03/30	DATE	

METRIC
WHOLE NUMBERS INDICATE MILLIMETRES
DECIMALIZED NUMBERS INDICATE METRES