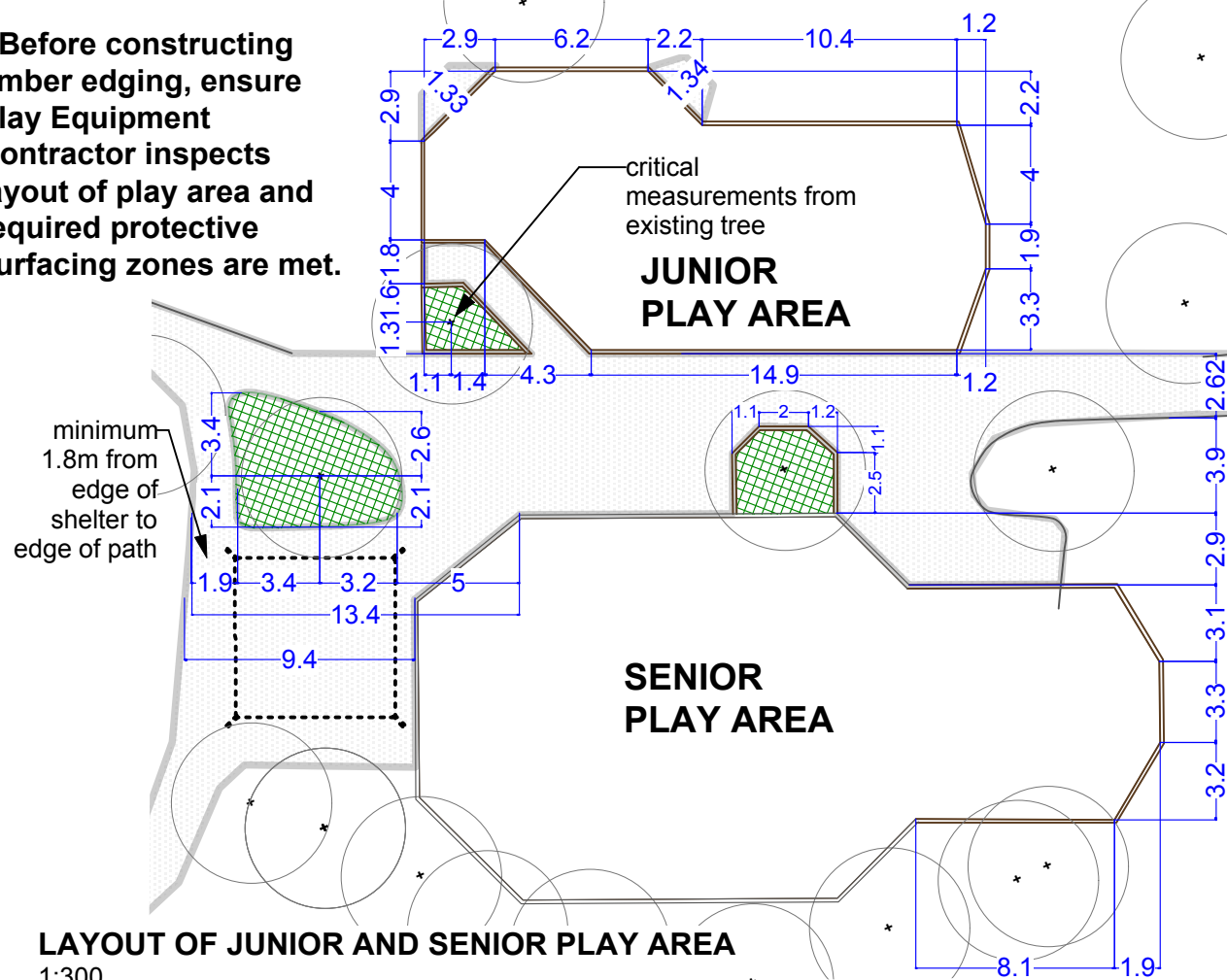
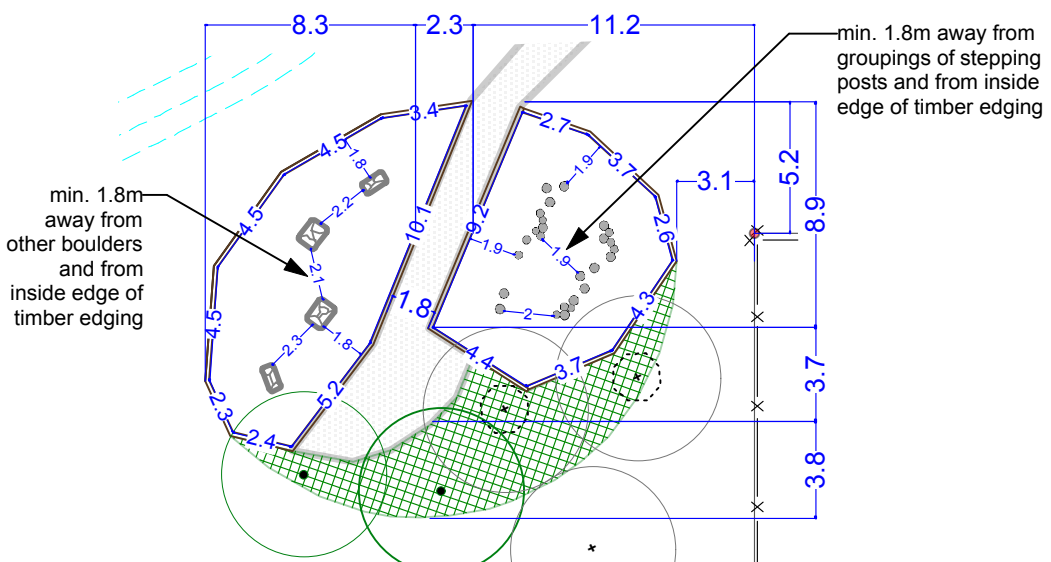


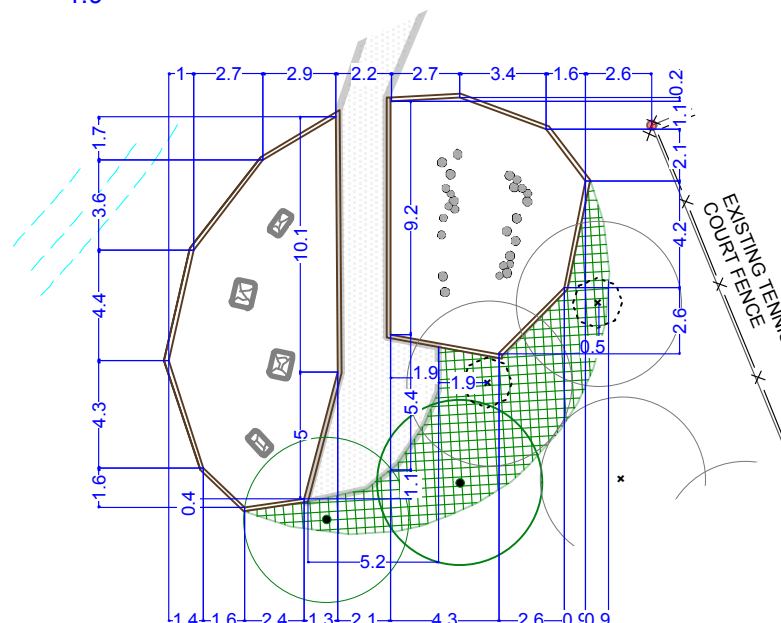
* Before constructing timber edging, ensure Play Equipment Contractor inspects layout of play area and required protective surfacing zones are met.



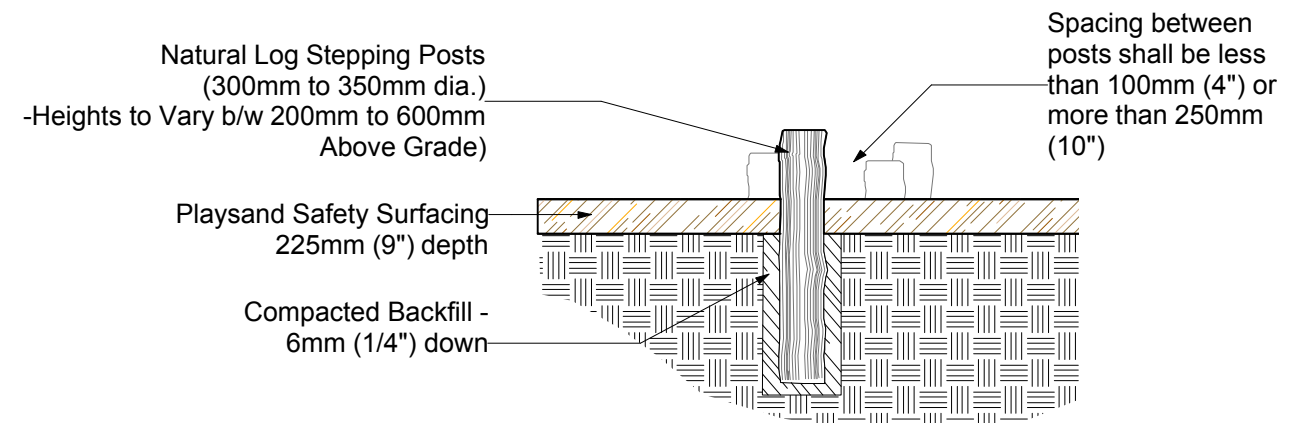
LAYOUT OF JUNIOR AND SENIOR PLAY AREA
1:300



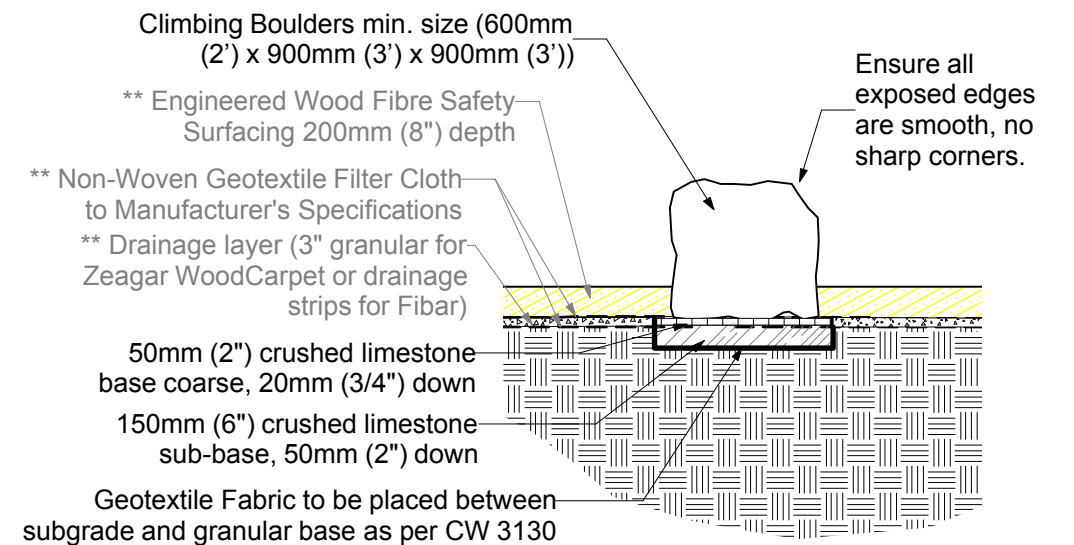
LAYOUT 1 OF CLIMBING BOULDERS AND STEPPING POST AREAS
1:300



LAYOUT 2 OF CLIMBING BOULDERS AND STEPPING POST AREAS
1:300



LOG STEPPING POST DETAIL
SCALE - 1:50



CLIMBING BOULDER DETAIL
SCALE - 1:50

NOTE: ** Engineered Wood Fibre Safety Surfacing, geotextile, and granular or strip drainage layer to be supplied and installed by Play Equipment Contractor

CONTRACTOR TO CONFIRM ALL DIMENSIONS AND REPORT ANY DISCREPANCIES TO CONTRACT ADMINISTRATOR PRIOR TO CONSTRUCTION. LOCATION OF UNDERGROUND STRUCTURES AS SHOWN ARE BASED ON THE BEST INFORMATION AVAILABLE BUT NO GUARANTEE IS GIVEN THAT ALL EXISTING UTILITIES ARE SHOWN OR THAT THE GIVEN LOCATIONS ARE EXACT. CONFIRMATION OF EXISTENCE AND EXACT LOCATION OF ALL SERVICES MUST BE OBTAINED FROM THE INDIVIDUAL UTILITIES BEFORE PROCEEDING WITH CONSTRUCTION.



THE CITY OF WINNIPEG
Planning, Property and Development Department
Planning and Land Use Division
Unit 15 - 30 Fort Street, Winnipeg, MB, (R3C 4X5)

DESIGNED BY	SP	CHECKED BY	
DRAWN BY	SP	APPROVED BY	
HORIZ. SCALE	1:400		
VERT. SCALE			
DATE	MAY 2011		

MANAGER, PARK AND OPEN SPACES	DATE
MANAGER, PLANNING AND LAND USE DIVISION	DATE

DRAWING TITLE
Archambault Park
Site Works Redevelopment
Layout and Details

SITE ADDRESS **224 Rutledge Crescent**

DRAWING NO.

A.63-A3

BID OPPORTUNITY NO.
464-2011