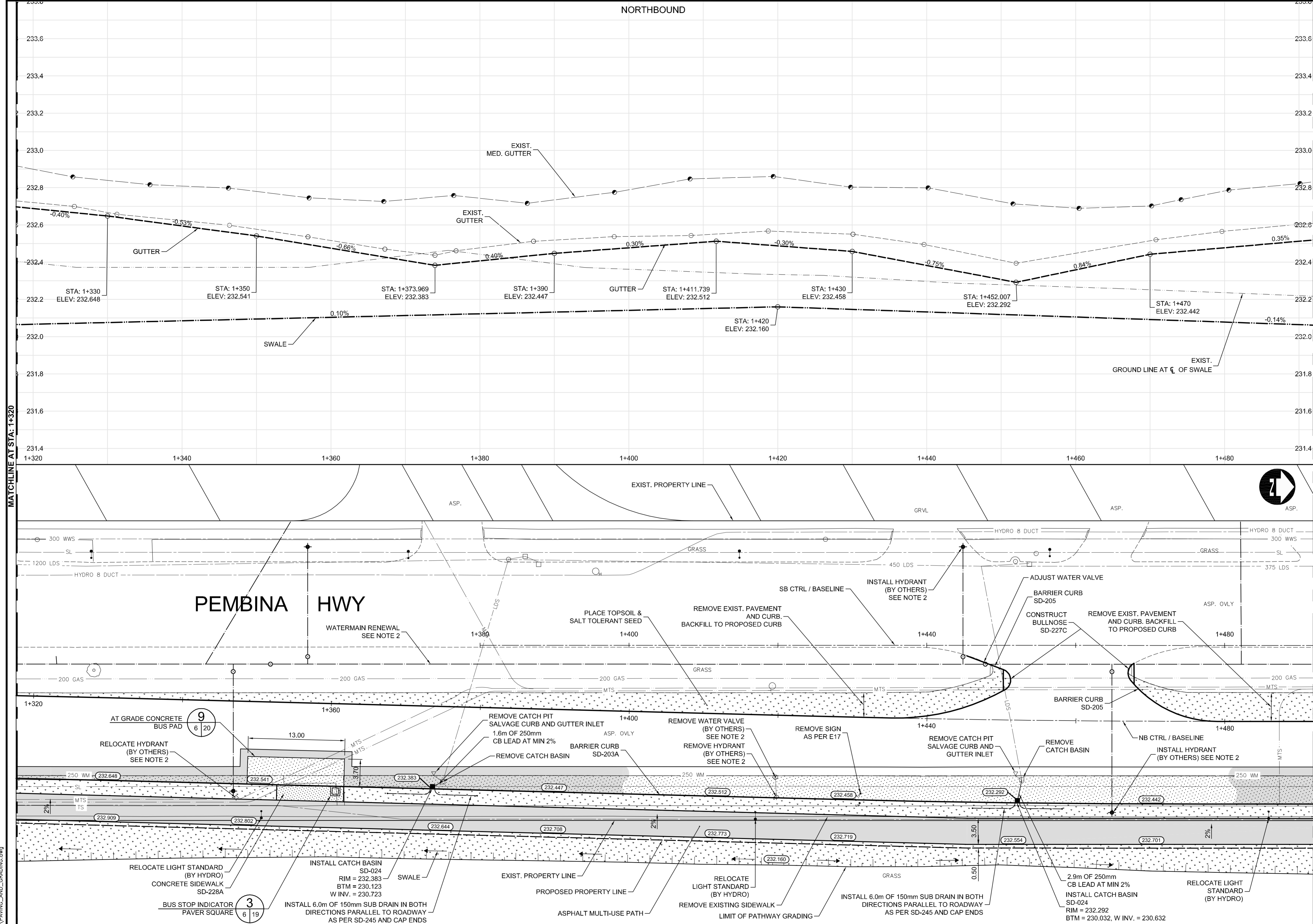


NORTHBOUND



- CONSTRUCTION NOTES:**
1. THE CONTRACTOR MUST COMPLY WITH ALL SPECIFICATIONS OUTLINED IN E23 - OPERATING CONSTRAINTS FOR WORK IN CLOSE PROXIMITY TO FEEDERMANS.
 2. PROPOSED WATERMAIN RENEWAL TO BE COMPLETED BY OTHERS IN JUNE / JULY 2011.
 3. EXIST. ALUMINUM GUARDRAIL TO BE SALVAGED AND DELIVERED TO CITY YARD. IN ACCORDANCE WITH E21

METRIC
WHOLE NUMBERS INDICATE MILLIMETRES
DECIMALIZED NUMBERS INDICATE METRES

- WARNING**
- IF POWER EQUIPMENT OR EXPLOSIVES ARE TO BE USED FOR EXCAVATION ON THIS PROJECT THE CONTRACTOR MUST:
1. NOTIFY THE GAS COMPANY OF THE PROPOSED LOCATION OF EXCAVATION.
 2. TAKE PRECAUTION TO AVOID DAMAGE TO GAS COMPANY INSTALLATIONS SEE PROVINCIAL REGULATION 210/72 FOR DETAILS.
 3. OBTAIN EXCAVATION PERMITS PRIOR TO CONSTRUCTION.

150 WM	WATERMAIN	150 WM	HYDRO	HYDRO	HYDRO	150 mm W.M.	WATERMAIN	150 mm W.M.
+	HYDRANT VALVE	+	MTS	MTS	+	+	HYDRANT VALVE	+
⊗	LAND DRAINAGE SEWER	⊗	300 LDS	300 LDS	⊗	⊗	LAND DRAINAGE SEWER	⊗
⊙	WASTE WATER SEWER	⊙	250 WWS	250 WWS	⊙	⊙	WASTE WATER SEWER	⊙
○	MANHOLE	○			○	○	MANHOLE	○
□	CATCH BASIN	□			□	□	CATCH BASIN	□
▽	CURB INLET	▽			▽	▽	CURB INLET	▽
+	JUNCTIONS	+			+	+	JUNCTIONS	+
⊕	CULVERT	⊕			⊕	⊕	CULVERT	⊕
⊖	GAS	⊖			⊖	⊖	GAS	⊖
---	EXISTING	---	EXISTING	---	---	---	EXISTING	---
---	LEGEND-PLAN	---	LEGEND-PLAN	---	---	---	LEGEND-PROFILE	---
---	PROPOSED	---	PROPOSED	---	---	---	PROPOSED	---
---	EXISTING	---	EXISTING	---	---	---	EXISTING	---
---	LEGEND-PLAN	---	LEGEND-PLAN	---	---	---	LEGEND-PROFILE	---
---	PROPOSED	---	PROPOSED	---	---	---	PROPOSED	---
---	EXISTING	---	EXISTING	---	---	---	EXISTING	---

UNDERGROUND STRUCTURES

DESIGNED BY: RTP
DRAWN BY: PMW
CHECKED BY: JNC
APPROVED BY: DPK

DATE: 2011/06/23

NO. REVISIONS: 1
DATE: 11/06/23
BY: JNC

B.M. 654271 N 5517192.470 E 632610.651
ELEV. 233.084

DILLON CONSULTING

RELEASED FOR CONSTRUCTION
ORIGINAL SIGNED BY B. KIBBINS
DATE: 11/06/23

ENGINEER'S SEAL
PROVINCE OF MANITOBA
ORIGINAL STAMPED BY
J.N. CRANG
2011/06/23
REGISTERED PROFESSIONAL ENGINEER

CONSULTANT PROJECT NUMBER
11-4587

THE CITY OF WINNIPEG
PUBLIC WORKS DEPARTMENT

Winnipeg

BISON DRIVE & PEMBINA HIGHWAY
INTERSECTION IMPROVEMENTS

PAVING AND GRADING
STA: 1+320 TO 1+490

CITY DRAWING NUMBER: P-3327-6
SHEET 6 OF 24
CONSULTANT DRAWING NUMBER

G:\CAD\114587\Contract\Curent\Roadway\PAVING_AND_GRADING.dwg