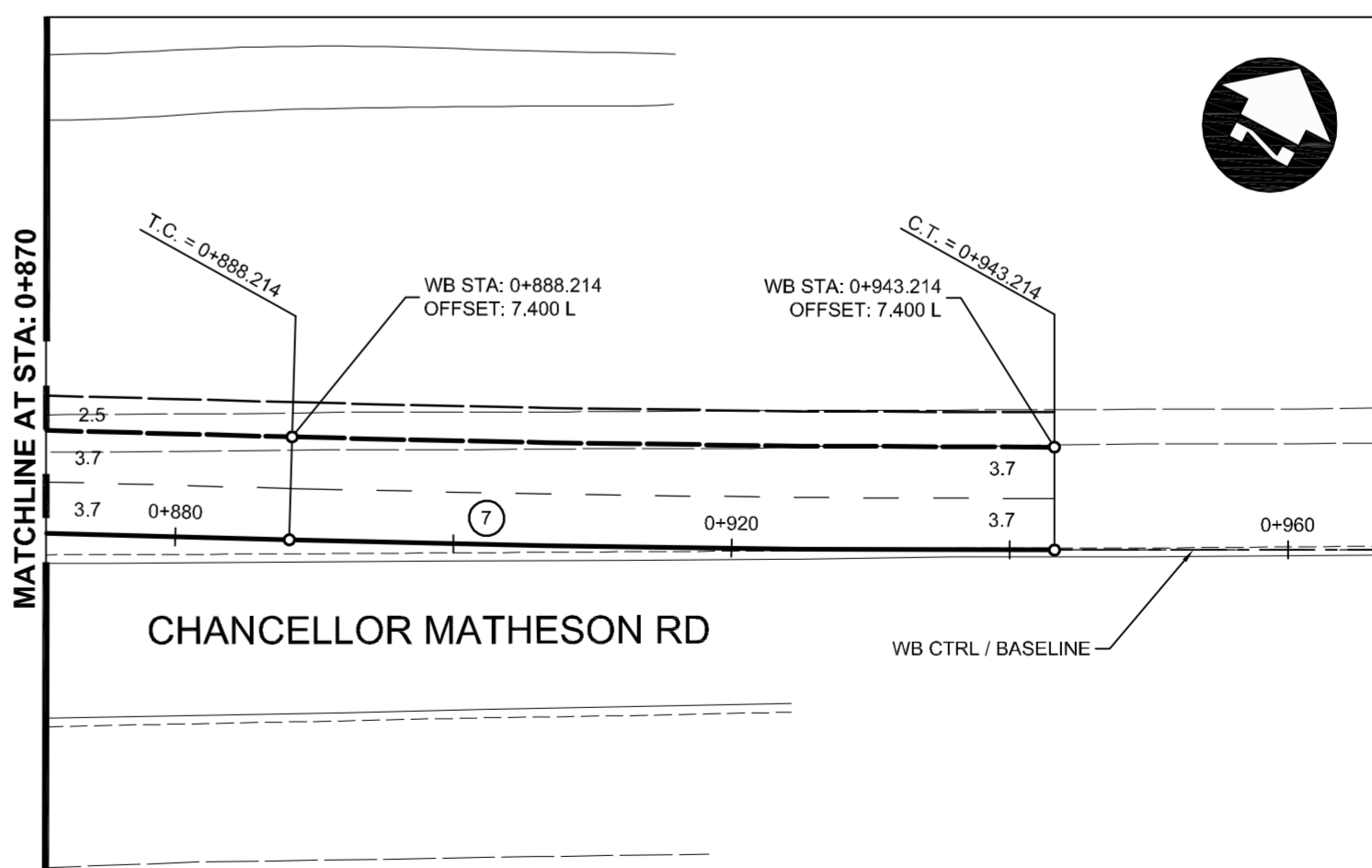


| WESTBOUND (WB) CONTROL LINE / BASELINE | | | | | | |
|--|-----------|-------------|------------|-----------|------------|----------|
| CONTROL POINT | STATION | COORDINATES | | PARAMETER | CURVE DATA | |
| | | NORTHING | EASTING | | (5) | (7) |
| P.O.T. | 0+100 | 5518200.782 | 632216.217 | R. | 307.400 | 2000.000 |
| T.C. | 0+398.600 | 5518189.873 | 632514.617 | Δc | 30°08'39" | 1°34'32" |
| C.T. | 0+560.328 | 5518225.778 | 632670.403 | Tc | 82.783 | 27.502 |
| T.C. | 0+760.929 | 5518320.111 | 632847.439 | L. | 161.728 | 55.000 |
| C.T. | 0+815.929 | 5518345.304 | 632896.328 | L.C. | 159.869 | 54.998 |
| T.C. | 0+888.214 | 5518377.530 | 632961.032 | | | |
| C.T. | 0+943.214 | 5518402.723 | 633009.921 | | | |
| P.O.T. | 1+011.771 | 5518434.962 | 633070.425 | | | |

| EASTBOUND (EB) CONTROL LINE | | | | |
|-----------------------------|-----------|-------------|------------|--------------|
| CONTROL POINT | STATION | COORDINATES | | CURVE DATA |
| | | NORTHING | EASTING | |
| P.O.T. | 0+100 | 5518191.513 | 632219.029 | R. 300.000 |
| T.C. | 0+424.656 | 5518179.653 | 632543.469 | Δc 31°12'10" |
| C.T. | 0+588.034 | 5518217.344 | 632700.371 | Tc 83.769 |
| P.O.T. | 0+687.912 | 5518265.932 | 632787.634 | L. 163.377 |
| | | | | L.C. 161.366 |

| EASTBOUND LEFT TURN LANE (EB LTL) CONTROL LINE | | | | |
|--|-----------|-------------|------------|--------------|
| CONTROL POINT | STATION | COORDINATES | | CURVE DATA |
| | | NORTHING | EASTING | |
| P.O.T. | 0+403.755 | 5518183.914 | 632522.709 | R. 200.000 |
| T.C. | 0+483.499 | 5518196.755 | 632600.878 | Δc 22°50'42" |
| | | | | Tc 40.409 |
| | | | | L. 79.744 |
| | | | | L.C. 79.217 |



METRIC
WHOLE NUMBERS INDICATE MILLIMETRES
DECIMALIZED NUMBERS INDICATE METRES

WARNING
IF POWER EQUIPMENT OR EXPLOSIVES ARE TO BE USED FOR EXCAVATION ON THIS PROJECT THE CONTRACTOR MUST:
1. NOTIFY THE GAS COMPANY OF THE PROPOSED LOCATION OF EXCAVATION.
2. TAKE PRECAUTION TO AVOID DAMAGE TO GAS COMPANY INSTALLATIONS SEE PROVINCIAL REGULATION 210/72 FOR DETAILS.
3. OBTAIN EXCAVATION PERMITS PRIOR TO CONSTRUCTION.

| 150 MM | WATERMAIN | 150 MM | HYDRO | HYDRO | 150 mm W.M. | WATERMAIN | 150 mm W.M. |
|----------|---------------------|----------|----------|-------------|---------------|---------------------|----------------|
| ⊕ | HYDRANT VALVE | ⊕ | M.T.S. | M.T.S. | + | HYDRANT VALVE | + |
| 300 LDS | LAND DRAINAGE SEWER | 300 LDS | | | 300 mm L.D.S. | LAND DRAINAGE SEWER | 300 mm L.D.S. |
| 250 WWS | WASTE WATER SEWER | 250 WWS | | | 250 mm W.W.S. | WASTE WATER SEWER | 250 mm W.W.S. |
| ○ | MANHOLE | ● | | | — | PROFILE | — |
| □ | CATCH BASIN | ■ | | | — | NORTH/WEST GUTTER | — |
| ▽ | CURB INLET | ▽ | | | — | SOUTH/EAST GUTTER | — |
| — | JUNCTIONS | — | | | — | NORTH/WEST T/LANE | — |
| — | CULVERT | — | | | — | SOUTH/EAST T/LANE | — |
| 100 GAS | GAS | 100 GAS | | | | | |
| EXISTING | LEGEND—PLAN | PROPOSED | EXISTING | LEGEND—PLAN | PROPOSED | EXISTING | LEGEND—PROFILE |

| | | | | | | | | | |
|--|--|--|--|--|--|---|--|---|--|
| UNDERGROUND STRUCTURES SUPPLY, U/G STRUCTURES COMMITTEE DATE | | B.M. 654271 N 551792.470 E 632610.651 ELEV. 233.084 | | DESIGNED BY RTP DRAWN BY PMW CHECKED BY JNC APPROVED BY DPK | | ENGINEER'S SEAL PROVINCE OF MANITOBA ORIGINAL STAMPED BY J.N. CRANG 2011/06/23 REGISTERED PROFESSIONAL ENGINEER | | THE CITY OF WINNIPEG PUBLIC WORKS DEPARTMENT WINNIPEG | |
| NOTE: LOCATION OF UNDERGROUND STRUCTURES AS SHOWN ARE BASED ON THE BEST INFORMATION AVAILABLE BUT NO GUARANTEE IS GIVEN THAT ALL EXISTING UTILITIES ARE SHOWN OR THAT THE GIVEN LOCATIONS ARE EXACT. CONFIRMATION OF EXISTENCE AND EXACT LOCATION OF ALL SERVICES MUST BE OBTAINED FROM THE INDIVIDUAL UTILITIES BEFORE PROCEEDING WITH CONSTRUCTION. | | 1 ISSUED FOR TENDER 11/06/23 JNC | | HOR. SCALE 1:500 VERTICAL | | RELEASED FOR CONSTRUCTION ORIGINAL SIGNED BY B. KIBBINS CONSULTANT PROJECT NUMBER 11-4587 | | CONTROL LINE GEOMETRY BISON DR. & CHANCELLOR MATHESON RD. | |
| NO. REVISIONS | | DATE BY | | DATE 2011/06/23 | | CITY DRAWING NUMBER P-3327-3 SHEET 3 OF 24 | | CONSULTANT DRAWING NUMBER | |

G:\CAD\114587\Contract\Current\Roadway\CONTROL_LINE_GEOMETRY.dwg