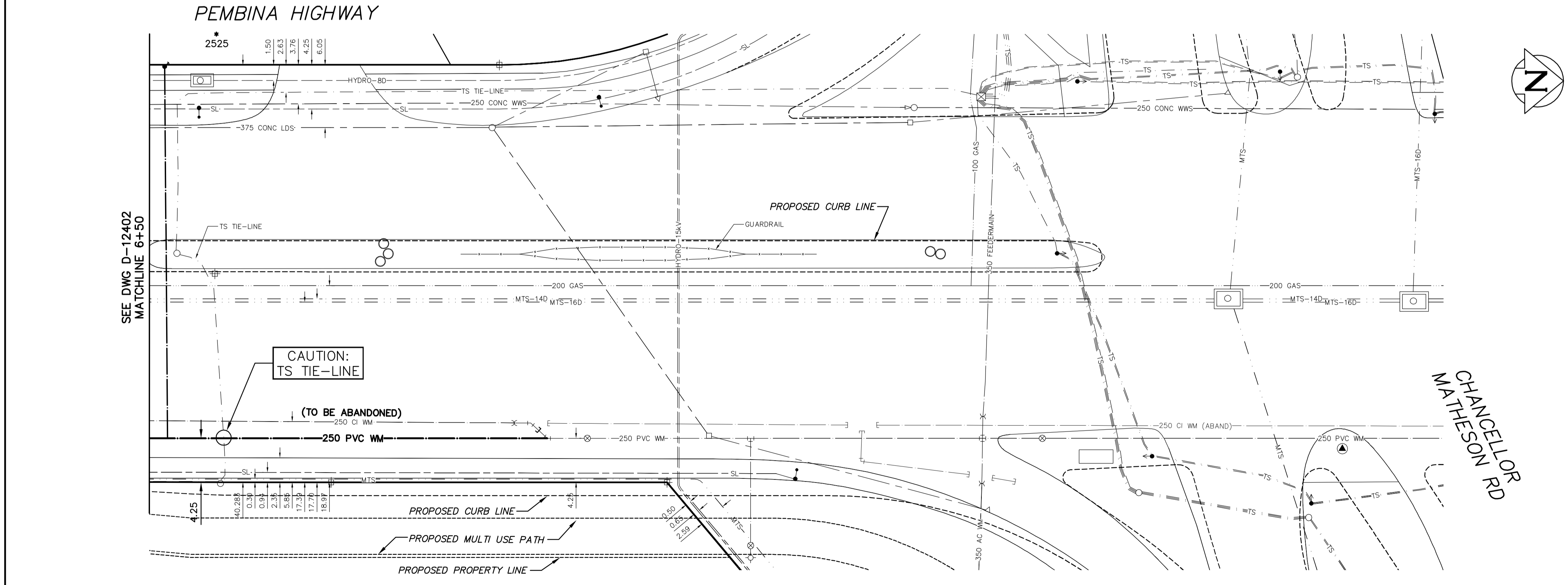


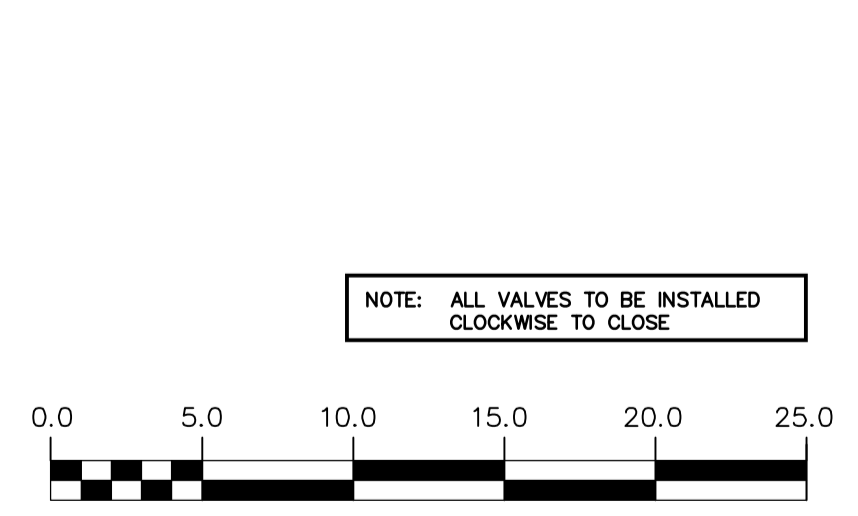
WATER SERVICE INFORMATION					
ADDRESS	SIZE(mm) & TYPE (STREET)	SIZE(mm) & TYPE (PROP.)	SHORT & LONG MEASUREMENT	CORP. LOCATION	REMARKS
2525 PEMBINA HWY	20	20	-	-	RENEW TO R W/25 COPPER
2537 PEMBINA HWY	38	38	-	-	RECONNECT SERVICE
2567 PEMBINA HWY	20	20	129.23 SSL CHANCELLOR	2.4 S S/C	SHARED W/ 2571
2571 PEMBINA HWY	20	20	181.98 SSL CHANCELLOR	8.4 S S/C	RENEW TO R W/25 COPPER
2579 PEMBINA HWY	50	50	181.98 SSL CHANCELLOR	8.4 S S/C	RENEW TO R W/25 COPPER
2589 PEMBINA HWY	50	50	222.43 SSL CHANCELLOR	18.1 S S/C	SHARED W/ 2579
2593 PEMBINA HWY	20	20	222.43 SSL CHANCELLOR	18.1 S S/C	ABANDON SERVICE
2599 PEMBINA HWY	20	20	275 SSL BLDG	17.2 S OF S/C	RENEW TO R W/25 COPPER
2599 PEMBINA HWY	20	20	308.82 SSL CHANCELLOR	17.2 S OF S/C	RENEW TO R W/25 COPPER

* SERVICES TO BE RENEWED TO R UPON CONFIRMATION BY THE CONTRACTOR OF EXISTING LEAD SERVICE.

NOTE: CHAINAGES SHOWN ARE ALONG E. R. OF PEMBINA HWY.



- CONSTRUCTION NOTES**
1. EXPOSE EXISTING WATERMAIN & CONFIRM INVERTS PRIOR TO CONSTRUCTION.
 2. LOCATION OF ALL SERVICES TO BE CONFIRMED IN THE FIELD.
 3. INSTALL WATERMAIN BY TRENCHLESS METHODS.
 4. TRENCHES AND EXCAVATIONS WITHIN 1 METRE OF A PAVED AREA INCLUDING SIDEWALKS SHALL BE CLASS 3 BACKFILL.
 5. ALL MATERIALS SHALL CONFORM TO THE CITY OF WINNIPEG STANDARD CONSTRUCTION SPECIFICATIONS.
 6. MINIMUM COVER TO TOP OF WATERMAIN SHALL BE 2.4 m.
 7. REPLACE ALL EXISTING LEAD SERVICES FROM PROPOSED WATERMAIN TO R.
 8. NOTIFY ALL AFFECTED RESIDENTS AND BUSINESSES 24 HOURS IN ADVANCE OF ANY WATER SHUTDOWNS OR DISRUPTION OF SERVICE.



METRIC
WHOLE NUMBERS INDICATE MILLIMETRES
DECIMALIZED NUMBERS INDICATE METRES

WARNING
IF POWER EQUIPMENT OR EXPLOSIVES ARE TO BE USED FOR EXCAVATION ON THIS PROJECT THE CONTRACTOR MUST:
1) NOTIFY THE GAS COMPANY OF THE PROPOSED LOCATION OF EXCAVATION.
2) TAKE PRECAUTION TO AVOID DAMAGE TO GAS COMPANY INSTALLATIONS.
SEE PROVINCIAL REGULATION 210/72 FOR DETAILS

200 WM	WATERMAIN	200 WM	SL, HYDRO	150 WM	WATERMAIN	150 WM
⊕	HYDRANT	⊕	MTS	⊕	HYDRANT	⊕
⊙	VALVE	⊙	TRAFFIC SIGNALS	⊙	VALVE	⊙
⊖	LAND DRAINAGE SEWER	⊖	GAS	⊖	LAND DRAINAGE SEWER	⊖
⊗	WASTEWATER SEWER	⊗	SURVEY BAR	⊗	WASTEWATER SEWER	⊗
○	MANHOLE	○	FENCE	⊘	PROFILE	⊘
□	CATCH BASIN	■	POLE - HYDRO, MTS	⊔	GROUND ABOVE PIPE	⊔
▽	CURB INLET	▽	CURB STOP	⊔	DITCH (NORTH & WEST)	⊔
△	REDUCER	△	GUY ANCHOR	⊔	DITCH (SOUTH & EAST)	⊔
×	COUPLER	×	LIGHT STANDARD	⊔	GUTTER (NORTH & WEST)	⊔
⊕	ANODE	⊕	TREE	⊔	GUTTER (SOUTH & EAST)	⊔
EXISTING	LEGEND-PLAN	PROPOSED	EXISTING	LEGEND-PLAN	PROPOSED	EXISTING

LOCATION APPROVED UNDERGROUND STRUCTURES		B.M. ELEV.	FIELD BOOK #:
POSTED TO LBIS			
SUPV. U/G STRUCTURES COMMITTEE	DATE		
NOTE:	LOCATION OF UNDERGROUND STRUCTURES AS SHOWN ARE BASED ON THE BEST INFORMATION AVAILABLE BUT NO GUARANTEE IS GIVEN THAT ALL EXISTING UTILITIES ARE SHOWN OR THAT THE GIVEN LOCATIONS ARE EXACT. CONFIRMATION OF EXISTENCE AND EXACT LOCATION OF ALL SERVICES MUST BE OBTAINED FROM THE INDIVIDUAL UTILITIES BEFORE PROCEEDING WITH CONSTRUCTION.		
NO.	REVISIONS	DATE	BY
1	ADJUSTED HYDRANTS FOR PROPOSED MULTI USE PATH	11.05.12	CJH

CITY OF WINNIPEG WATER AND WASTE ENGINEERING DIVISION

DESIGNED BY: DB
CHECKED BY: KZ

DRAWN BY: CJH
APPROVED BY: KZ

HOR. SCALE: 1:250
VERTICAL: 1:50

RELEASED FOR CONSTRUCTION
K.R. ZUREK
MAY 12, 2011

ENGINEER'S SEAL

ORIGINAL SIGNED BY K.R. ZUREK
MAY 12, 2011

BID OPPORTUNITY: 373-2011
FILENAME: 12403.dwg
PLOT DATE: 2011 05 12

THE CITY OF WINNIPEG WATER AND WASTE DEPARTMENT

2011 WATERMAIN RENEWALS
CONTRACT NO. 17
PEMBINA HIGHWAY
50 S OF CHANCELLOR MATHESON ROAD TO CHANCELLOR MATHESON ROAD

SHEET 5 OF 5
CITY DRAWING NUMBER
D-12403