

B SIZE 11" x 17" (279.4mm x 431.8mm)

PLOT: 5/27/2011 11:17:32 AM

UMA FILE NAME: SK-1-3.dwg Saved By: sawchukm

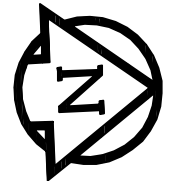
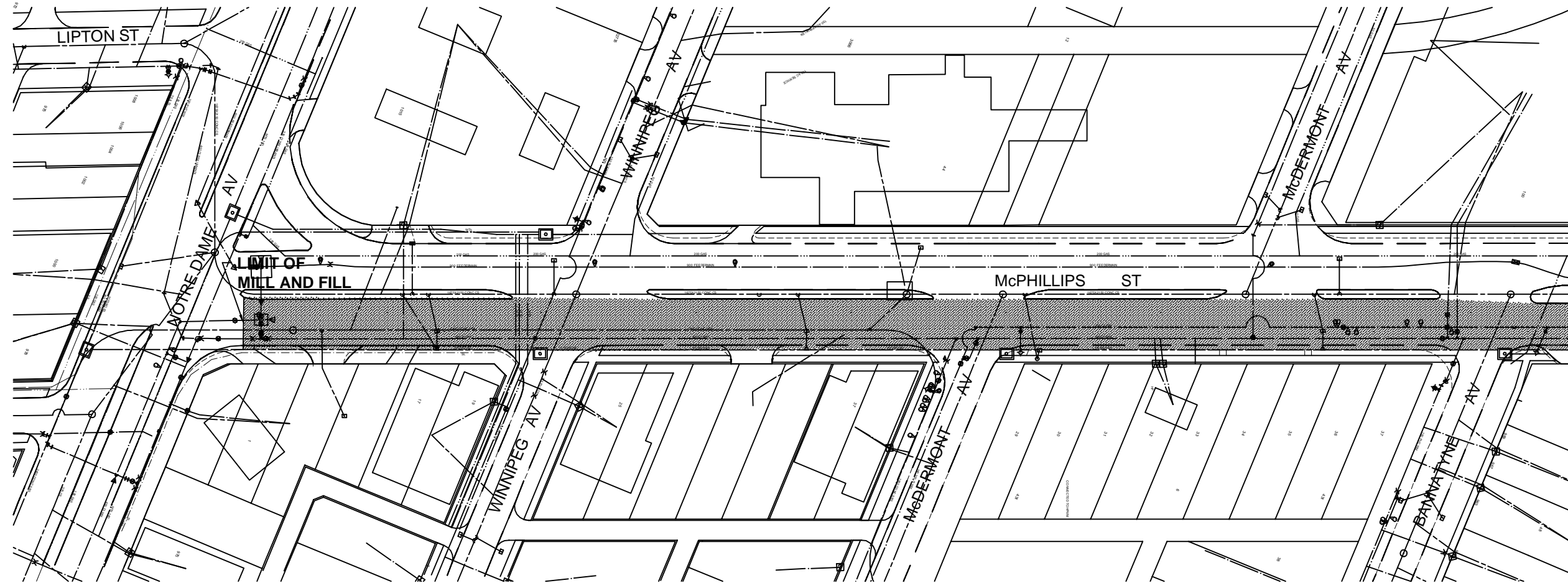
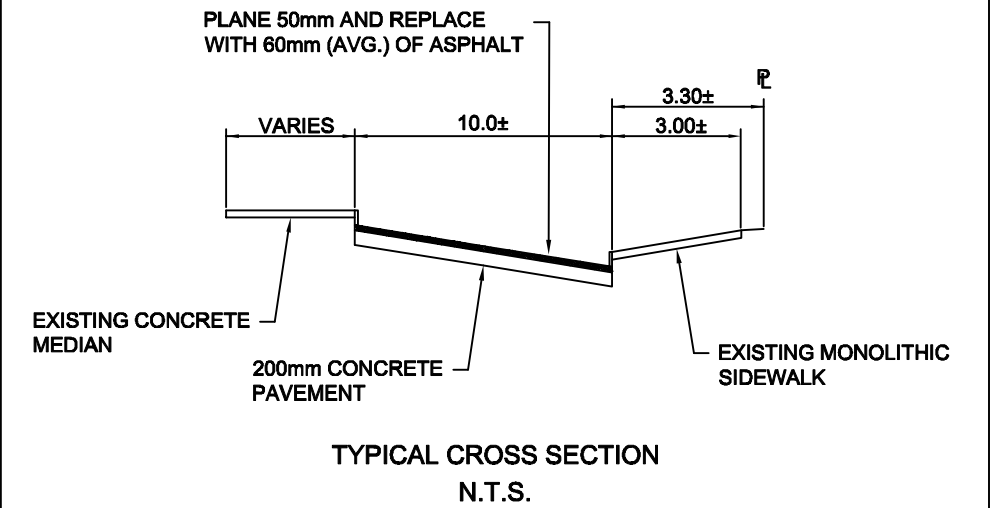
**BID OPPORTUNITY No.: 360-2011**

**FILE No.: 60212147**

Type of Work: **MILL AND FILL**

NOTES:

- PLANING OF EXISTING ASPHALT OVERLAY
- FULL DEPTH REPAIR OF EXISTING CONCRETE JOINTS AND SLABS AS REQUIRED
- ADJUSTMENT OF EXISTING MANHOLES, CATCHBASINS AND WATER VALVES AS REQUIRED
- REPLACEMENT OF EXISTING DRAINAGE INLETS WITH CATCH PITS OR CURB BOXES, AS REQUIRED
- REPAIR OF SECTIONS OF CURB AND SIDEWALK AS REQUIRED
- PLACEMENT OF ASPHALT OVERLAY (AVERAGE THICKNESS 60mm)
- BOULEVARD RESTORATION AS REQUIRED



**METRIC**  
 WHOLE NUMBERS INDICATE MILLIMETRES  
 DECIMALIZED NUMBERS INDICATE METRES

- ASPHALT OVERLAY



This drawing has been prepared for the use of AECOM's client and may not be used, reproduced or relied upon by third parties, except as agreed by AECOM and its client, as required by law or for use by governmental reviewing agencies. AECOM accepts no responsibility, and denies any liability whatsoever, to any party that modifies this drawing without AECOM's express written consent. Do not scale this document. All measurements must be obtained from stated dimensions.



**THE CITY OF WINNIPEG**  
**PUBLIC WORKS DEPARTMENT**  
 ENGINEERING DIVISION  
 TECHNOLOGY SERVICES BRANCH  
 106 - 1155 PACIFIC AVE

DATE:  
2010/05/27

DRAWN BY:  
SS

DRAWING NO.:  
SK-1

SCALE:  
1:1000

**2011 REGIONAL STREET PROGRAM**  
**McPILLIPS STREET NORTHBOUND**  
**NOTRE DAME AVENUE**  
**TO LOGAN AVENUE,**  
**MILL AND FILL**