

**SECTION DETAIL "A"**  
N.T.S.

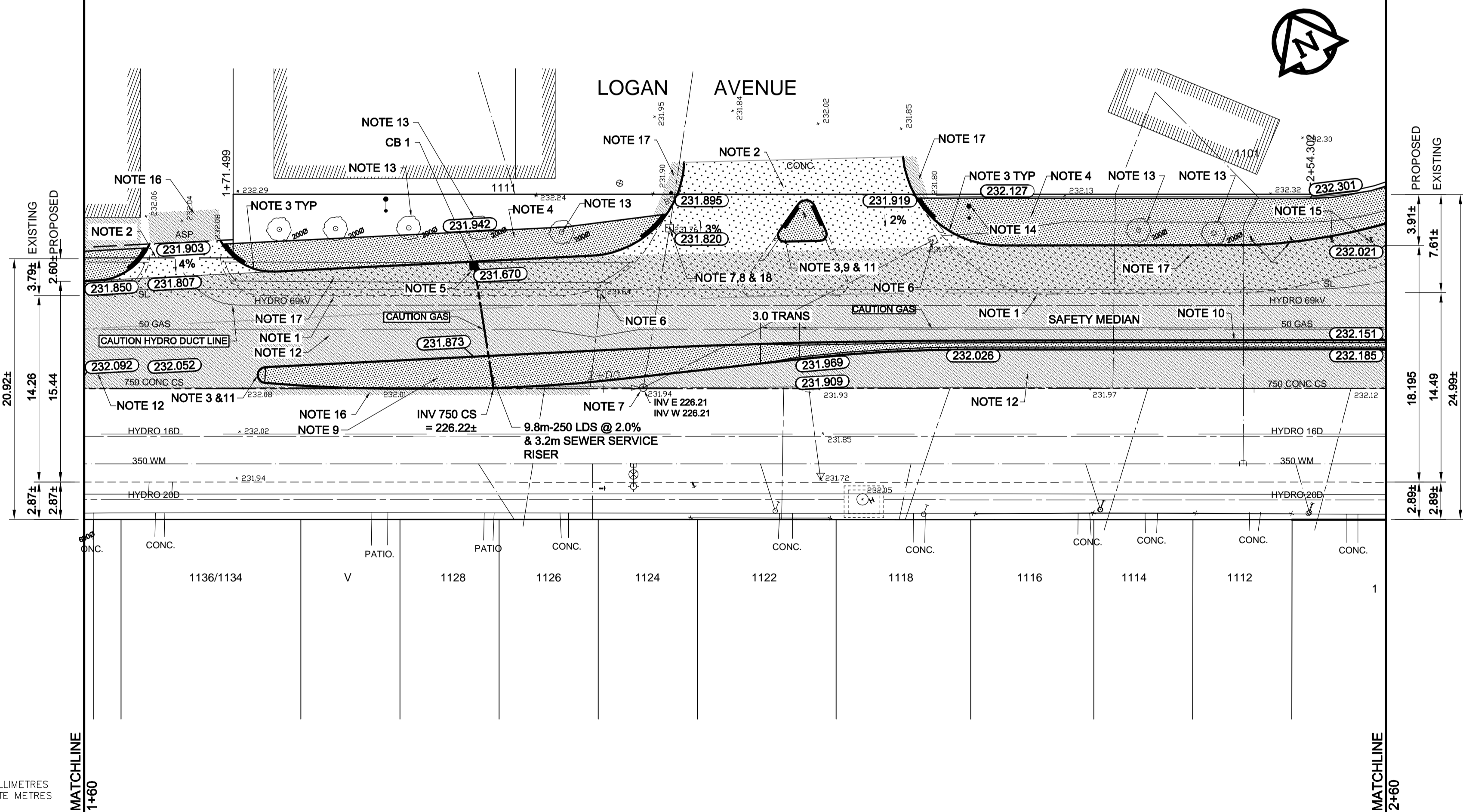
CB TABLE - COMBINED SEWER					
DESCRIPTION	RIM ELEV.	INVERT			
		EAST	WEST	NORTH	SOUTH
CB 1	231.670				230.020

**REFERENCE NOTES**

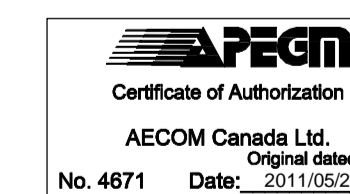
- A. PAVEMENT DIMENSIONS ARE TO BACK OF CURB
- B. BASELINE IS CENTRELINE OF RIGHT-OF-WAY
- C. PROPERTY LINES OBTAINED FROM THE CITY OF WINNIPEG L.B.I.S., AND NO SCALE FACTOR WAS APPLIED
- D. REFER TO AECOM FIELD BOOK NO. 4703

**CONSTRUCTION NOTES**

1. SAW CUT 150mm FROM FACE OF CURB AND REMOVE EXISTING PAVEMENT AND CONSTRUCT NEW 230mm PLAIN DOWELLED CONCRETE PAVEMENT
2. CONSTRUCT NEW 200mm REINFORCED CONCRETE PAVEMENT
3. CONSTRUCT NEW MODIFIED BARRIER CURB (180mm HT, INTEGRAL)
4. CONSTRUCT NEW MONOLITHIC BARRIER CURB (180mm HT.) AND CONCRETE 100mm SIDEWALK
5. INSTALL NEW CURB AND GUTTER INLET c/w CATCH BASIN (SD-024) AND CONNECT NEW 250mm LEAD TO EXISTING 750mm COMBINED SEWER
6. REMOVE EXISTING CATCHBASIN AND ABANDON EXISTING LEAD
7. ADJUST EXISTING CATCHBASIN/MANHOLE FRAME AND COVER
8. INSTALL NEW 50mm CAST IRON RISER RING
9. CONSTRUCT NEW MONOLITHIC CONCRETE MEDIAN
10. CONSTRUCT NEW MONOLITHIC CONCRETE SAFETY MEDIAN
11. CONSTRUCT NEW CONCRETE BULLNOSE
12. PLANE EXISTING ASPHALTIC CONCRETE OVERLAY AND CONSTRUCT NEW ASPHALTIC CONCRETE OVERLAY
13. REMOVE EXISTING TREE
14. RELOCATE EXISTING LIGHT STANDARD (BY OTHERS)
15. REMOVE AND SALVAGE EXISTING BANNER POLES
16. REMOVE EXIST ASPHALTIC CONCRETE PAVEMENT AND PLACE NEW ASPHALTIC CONCRETE PAVEMENT
17. CONSTRUCT NEW ASPHALTIC CONCRETE OVERLAY
18. SUPPLY AND INSTALL NEW FRAME AND COVER (AP004/AP005)



**METRIC**  
WHOLE NUMBERS INDICATE MILLIMETRES  
DECIMALIZED NUMBERS INDICATE METRES

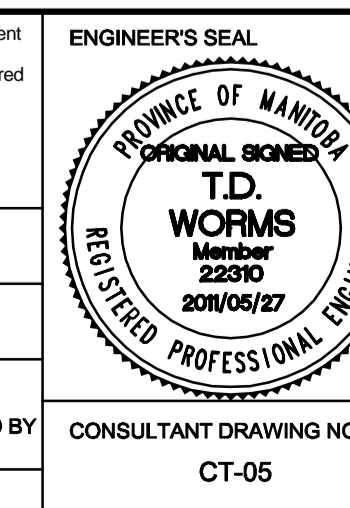


EXISTING	LEGEND - PLAN	PROPOSED	EXISTING	LEGEND - PLAN	PROPOSED	EXISTING	LEGEND - PROFILE	PROPOSED
150 mm W.M.	WATERMAIN	150 mm W.M.	HYDRO	M.T.S.	C PROFILE	---	NORTH/WEST GUTTER	---
300mm L.D.S.	LAND DRAINAGE SEWER	300mm L.D.S.	CONCRETE	ASPHALT	PROPERTY LINE	---	SOUTH/EAST GUTTER	---
250mm W.W.S.	WASTEWATER SEWER	250mm W.W.S.	SURVEY BAR	ELEVATION	(35.750)	---	NORTH MEDIUM GUTTER	---
○	MANHOLE	○	TREE	---	---	---	SOUTH T/L GUTTER	---
□	CATCH BASIN	□	SIDEWALK RAMP	---	---	---	N/W PROPERTY LINE	---
▽	CURB INLET	▽	CONCRETE SIDEWALK	---	---	---	S/E PROPERTY LINE	---
+	JUNCTIONS	+	FENCE	---	---	---		
—	CULVERT	—						
—	GAS	—						

LOCATION APPROVED	UNDERGROUND STRUCTURES	DATE
SUPV. U/G STRUCTURES COMMITTEE		

NO.	REVISIONS	DATE	BY
0	ISSUED FOR TENDER	2011/05/27	KWR
A	ISSUED FOR REVIEW	2011/05/13	KWR

DESIGNED BY	TDW	CHECKED BY	KWR
DRAWN BY	PAAP	APPROVED BY	KWR
HOR. SCALE:	1:250	RELEASED FOR CONSTRUCTION BY:	B.S. KIBBINS
VERTICAL:	1:10	ORIGINAL SIGNED BY:	B.S. KIBBINS
DATE	2011/05/27	CONSULTANT DRAWING NO.:	CT-05



**THE CITY OF WINNIPEG**  
PUBLIC WORKS DEPARTMENT  
ENGINEERING DIVISION

**LOGAN AVENUE**  
McPHILLIPS STREET TO TRINITY STREET  
PAVEMENT RECONSTRUCTION

PLAN/PROFILE  
STATION 1+60 TO STATION 2+60

CITY DRAWING NUMBER  
P-3326-05  
SHEET 5 OF 10