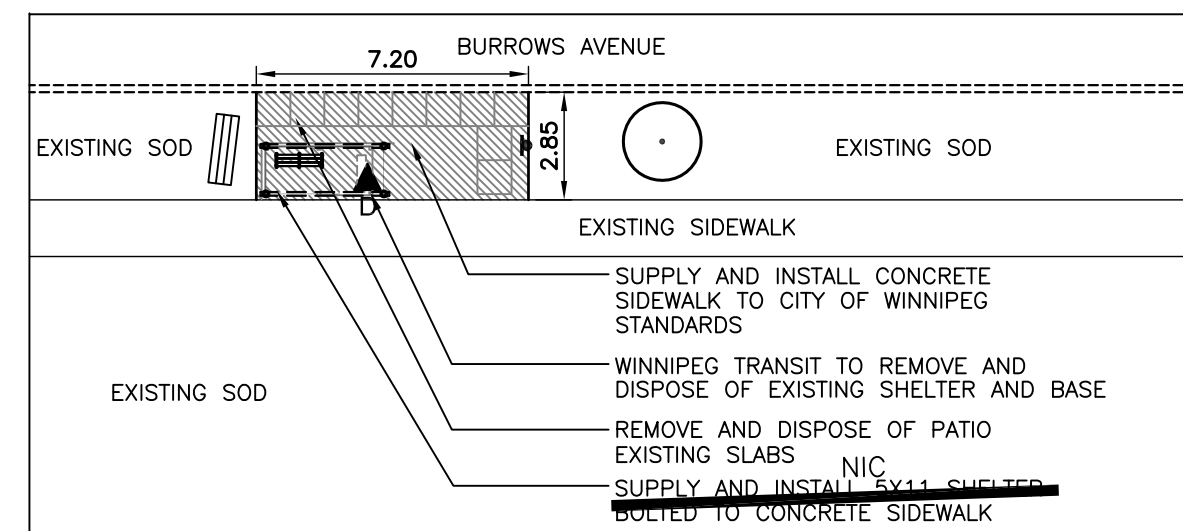
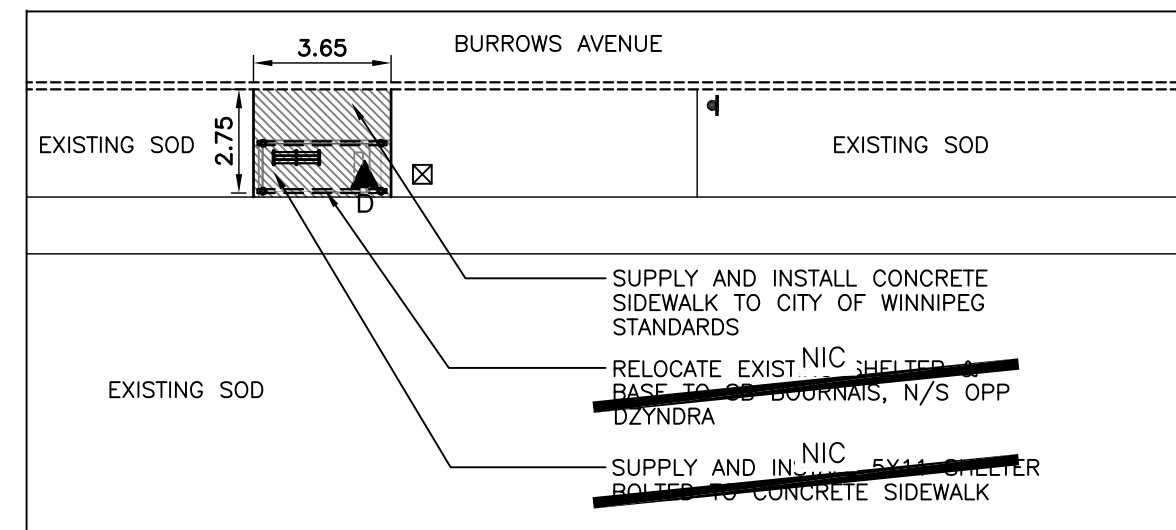


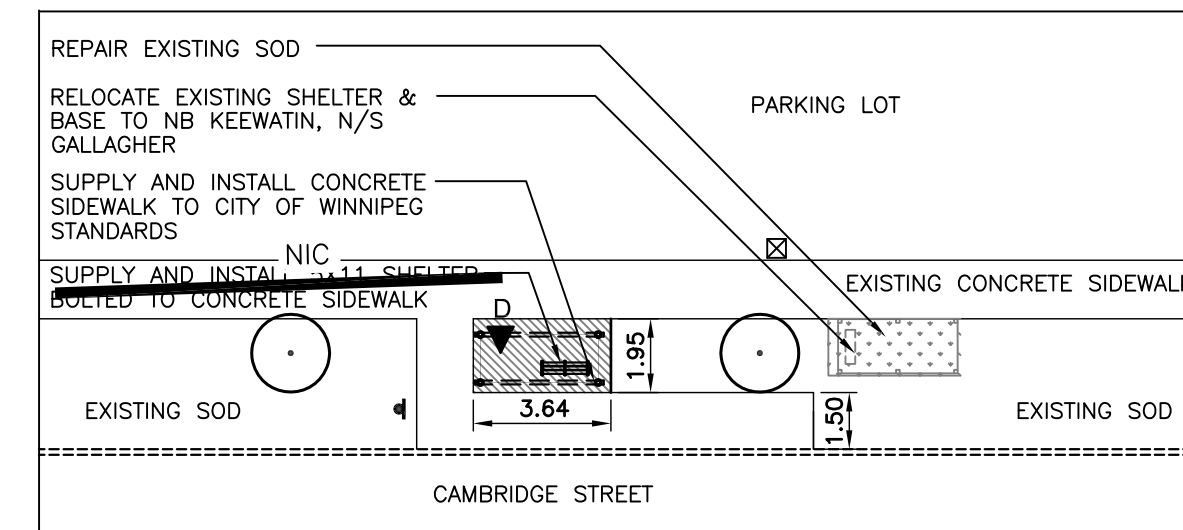
Southbound Aulneau, F/S Masson
Stop 50178 Masson



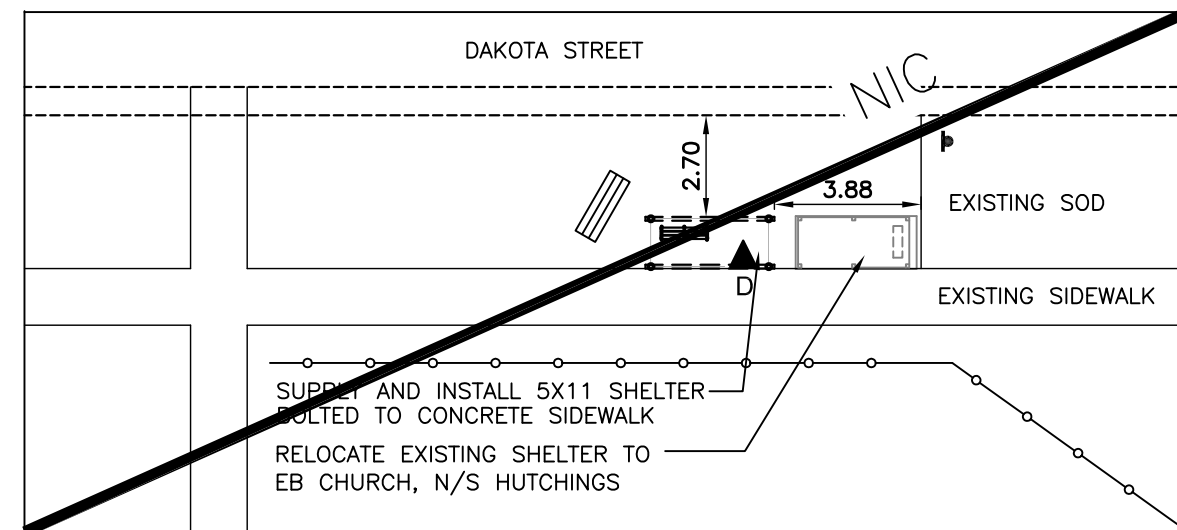
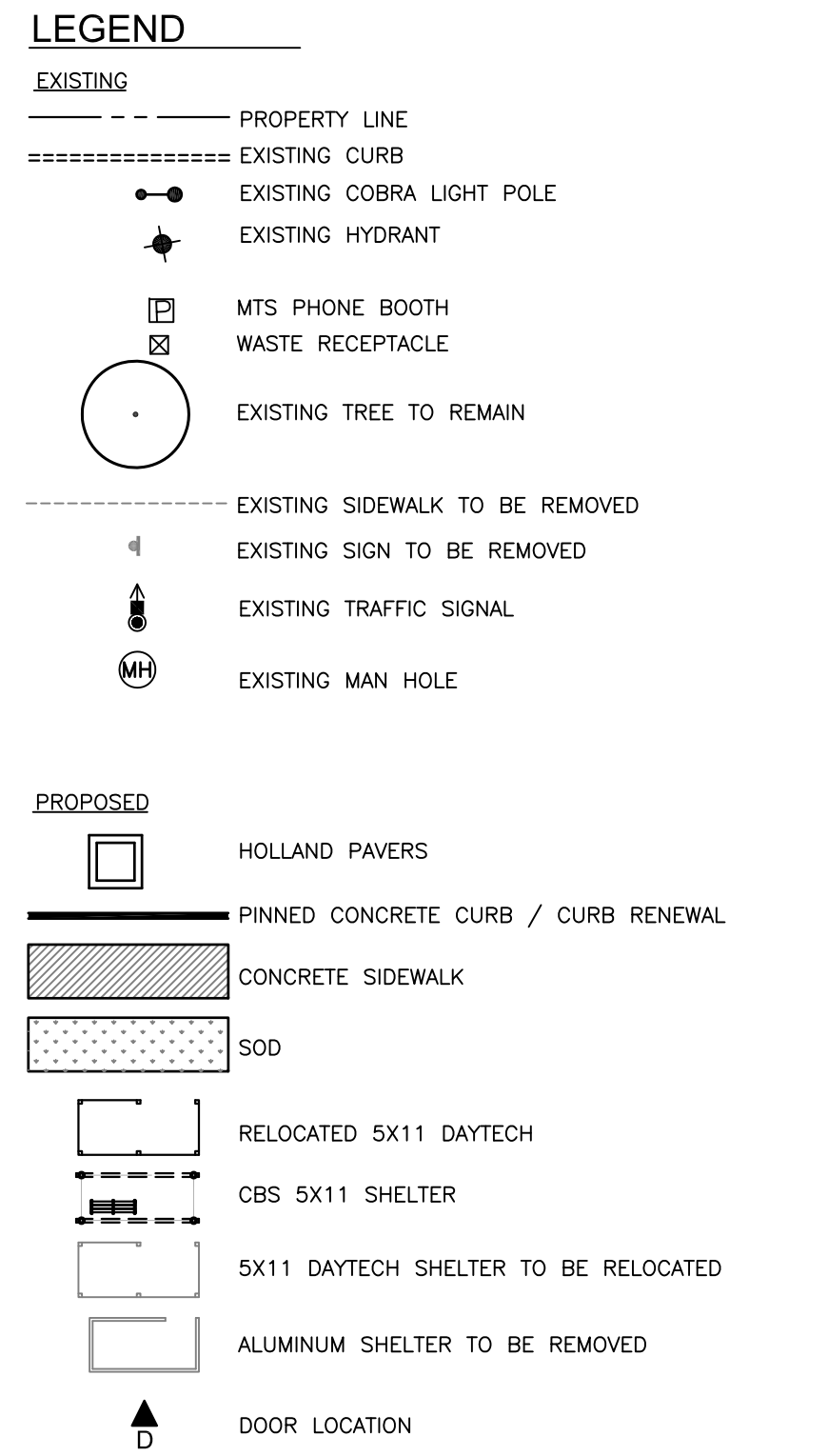
Eastbound Burrows, N/S Keewatin
Stop 30668 Keewatin West



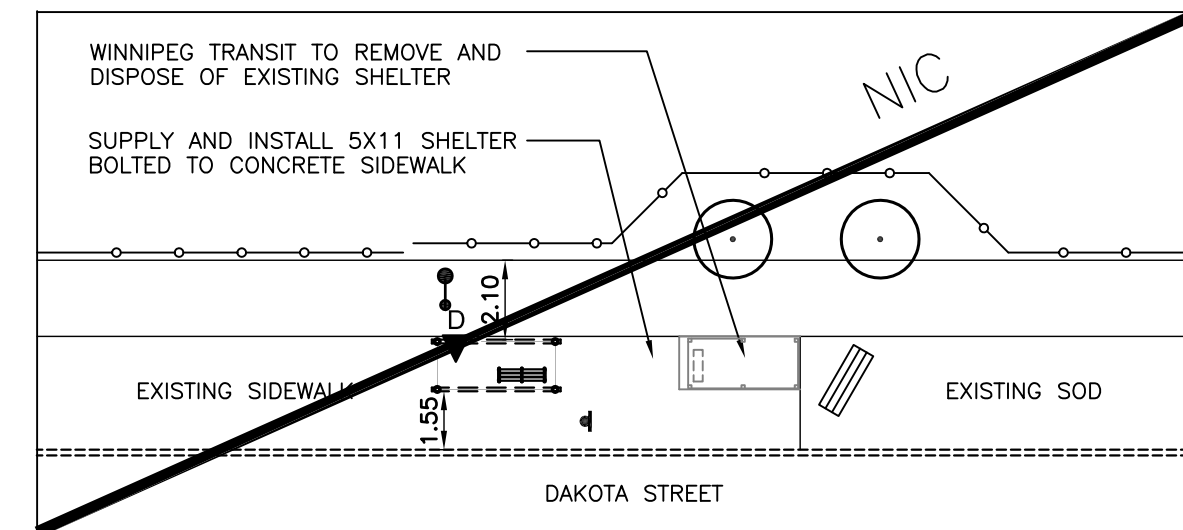
Eastbound Burrows, F/S Keewatin
Stop 30677 Keewatin East



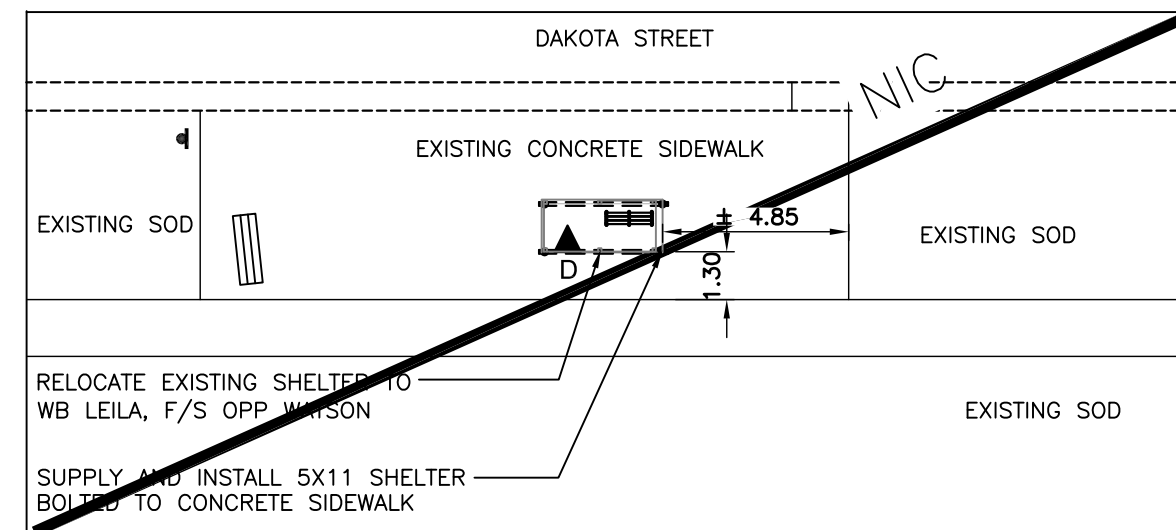
Southbound Cambridge, F/S Grant
Stop 60289 Grant South



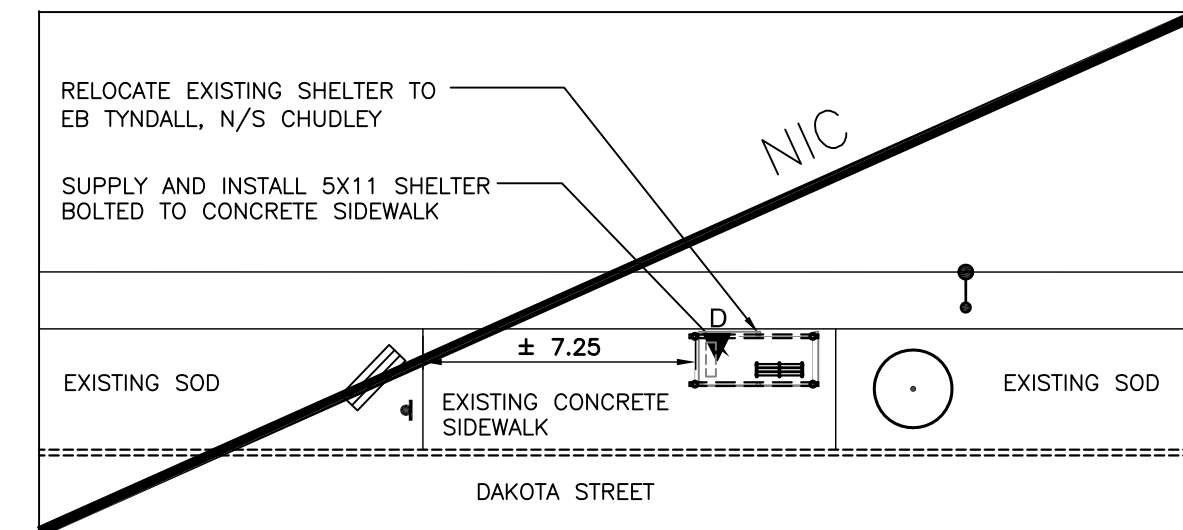
Northbound Dakota, N/S Hyatt
Stop 50190 Dakota Community Club



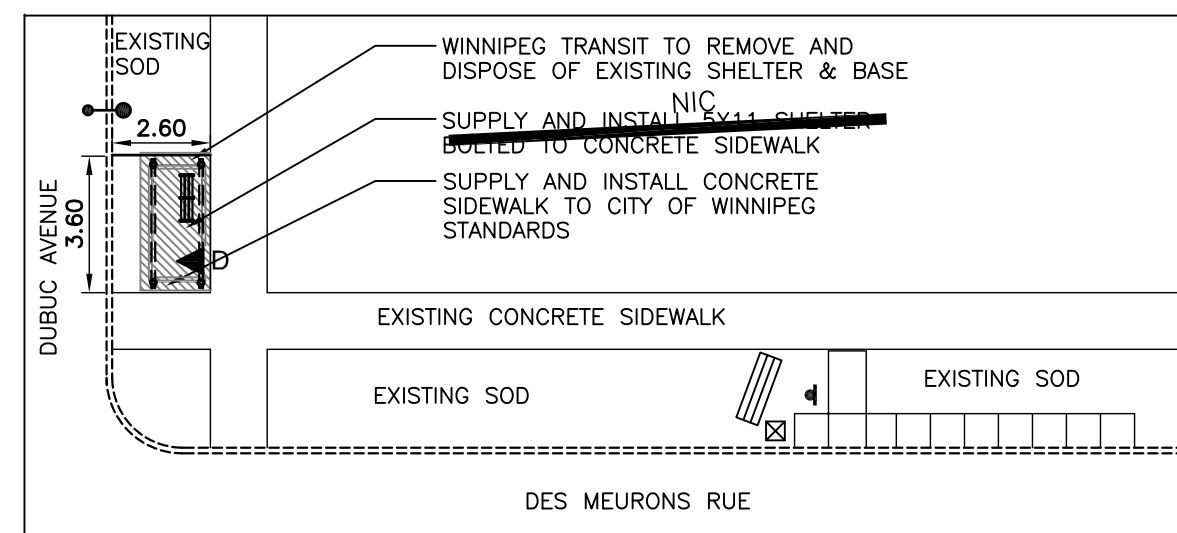
Southbound Dakota, F/S Chesterfield
Stop 50484 Chesterfield



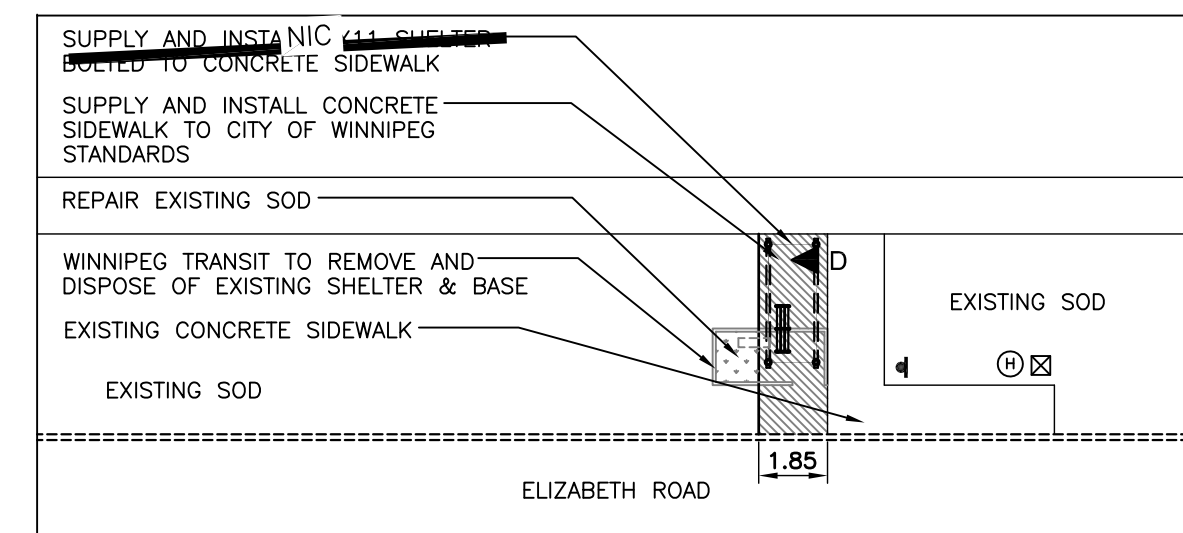
Southbound Dakota, N/S Hyatt
Stop 50496 Hyatt



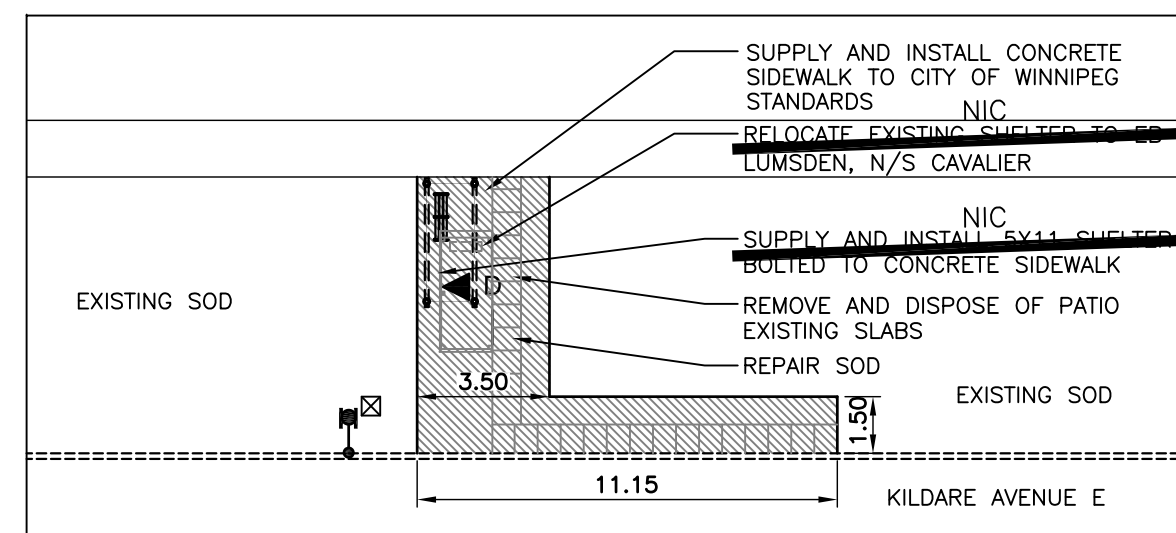
Northbound Dakota, F/S Novavista
Stop 50497 Novavista



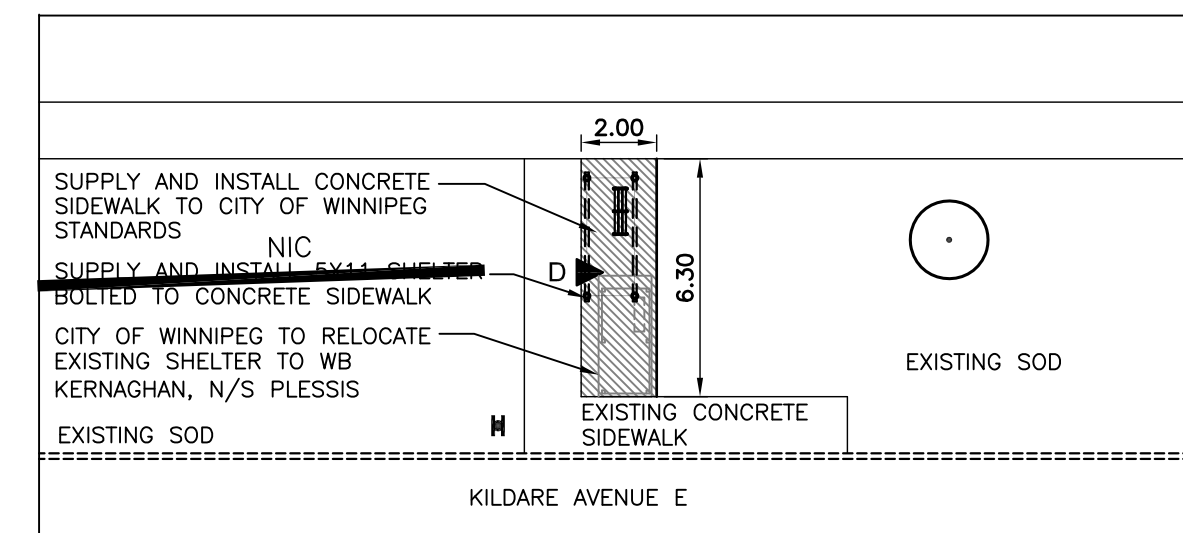
Southbound Des Meurons, N/S Dubuc
Stop 50230 Dubec



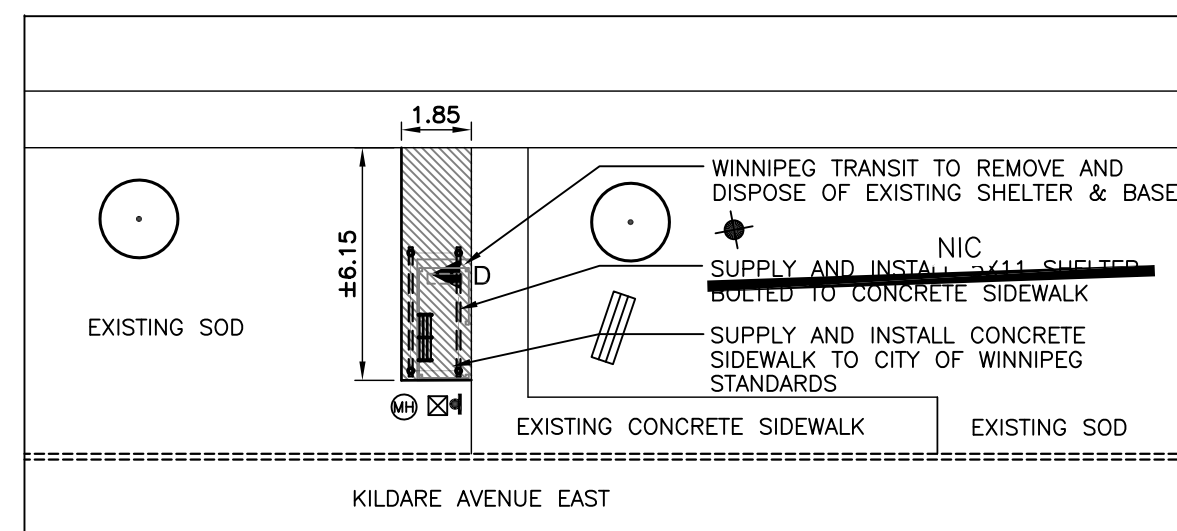
Westbound Elizabeth, F/S De Bourmont
Stop 50044 De Bourmont



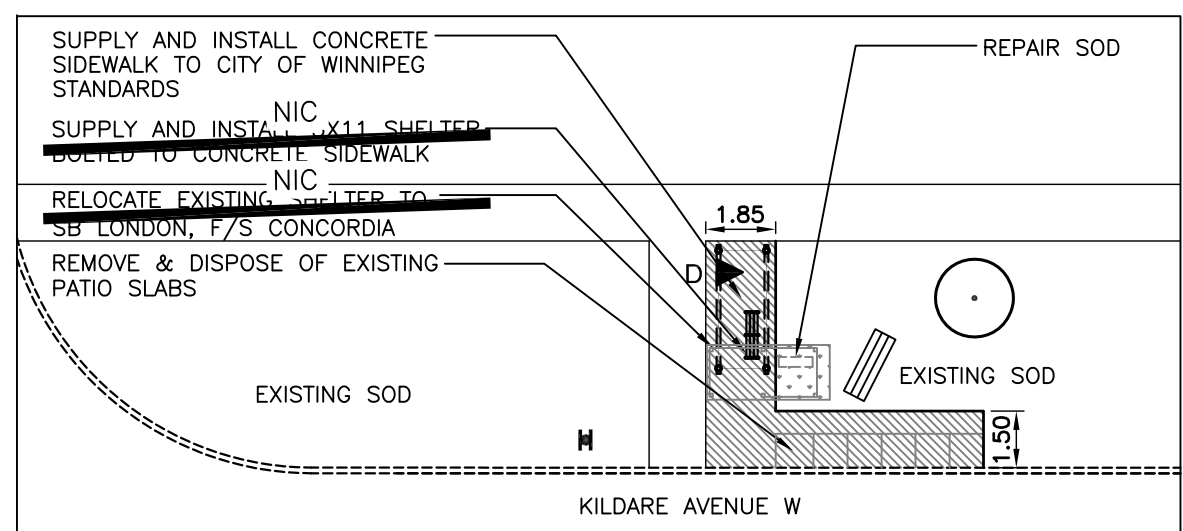
Westbound Kildare, N/S Redonda
Stop 40007 Redonda East



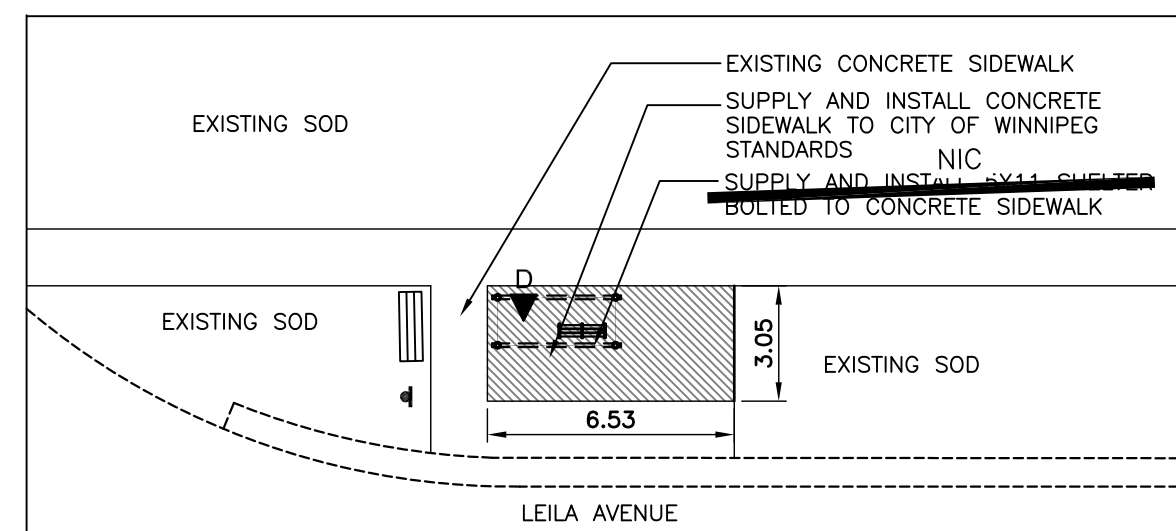
Westbound Kildare, N/S Opp Wildlake
Stop 40022 Wildlake



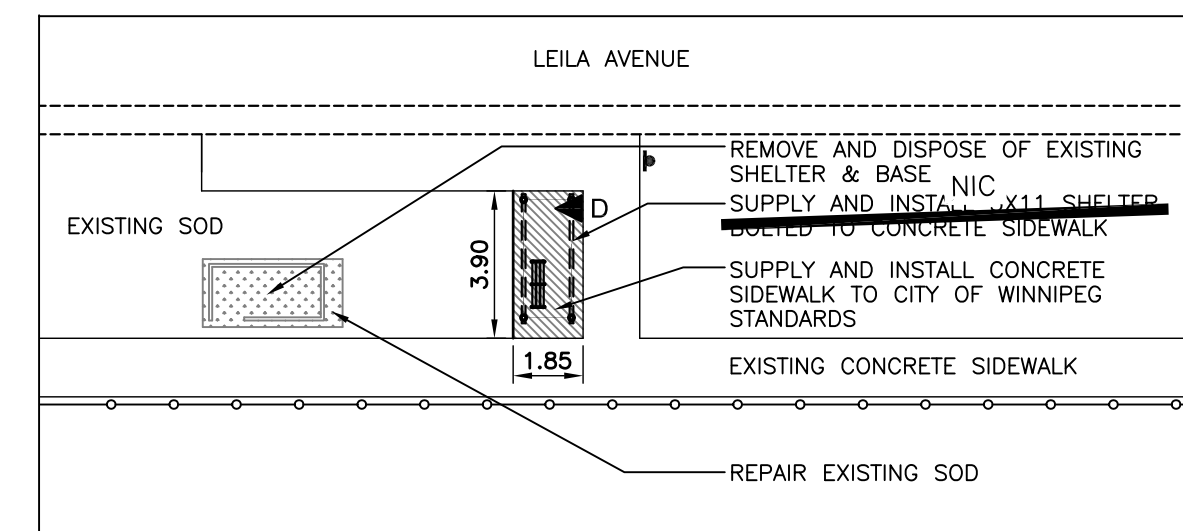
Westbound Kildare, N/S Wayoata
Stop 40034 Wayoata



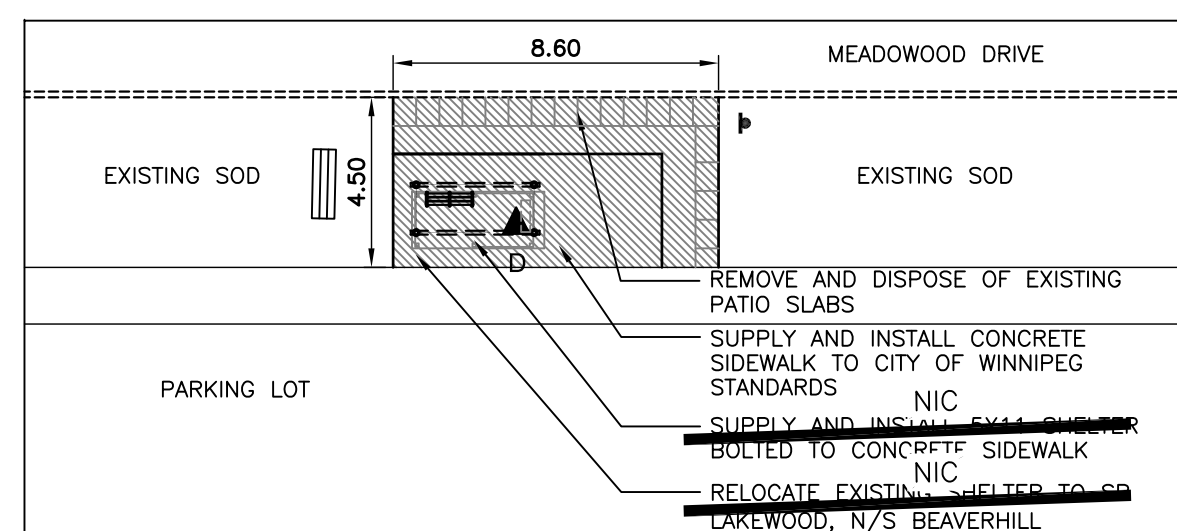
Westbound Kildare, F/S Day
Stop 40061 Day



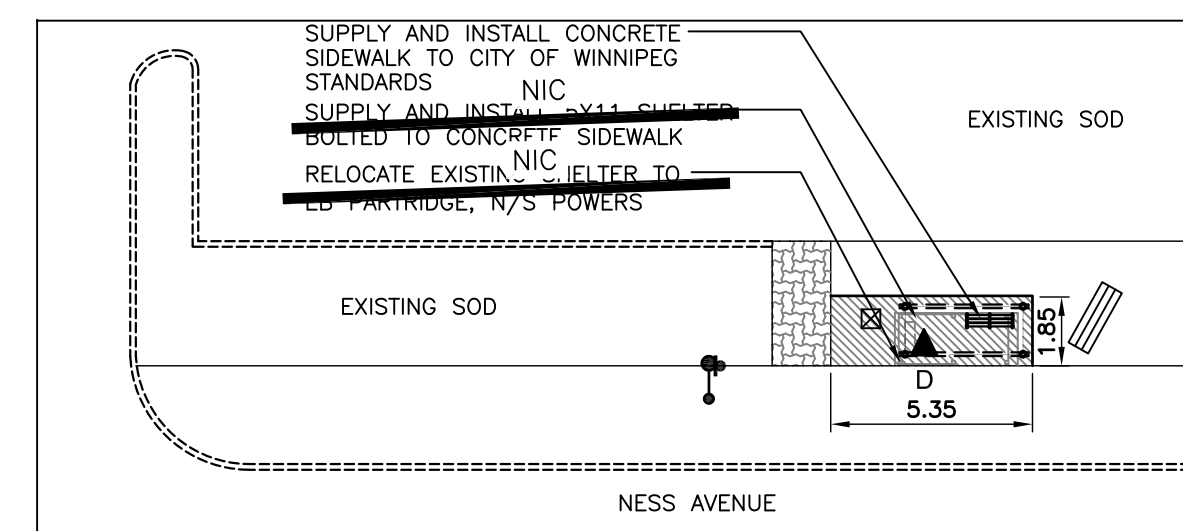
Westbound Leila, F/S McPhillips
Stop 30365 McPhillips West



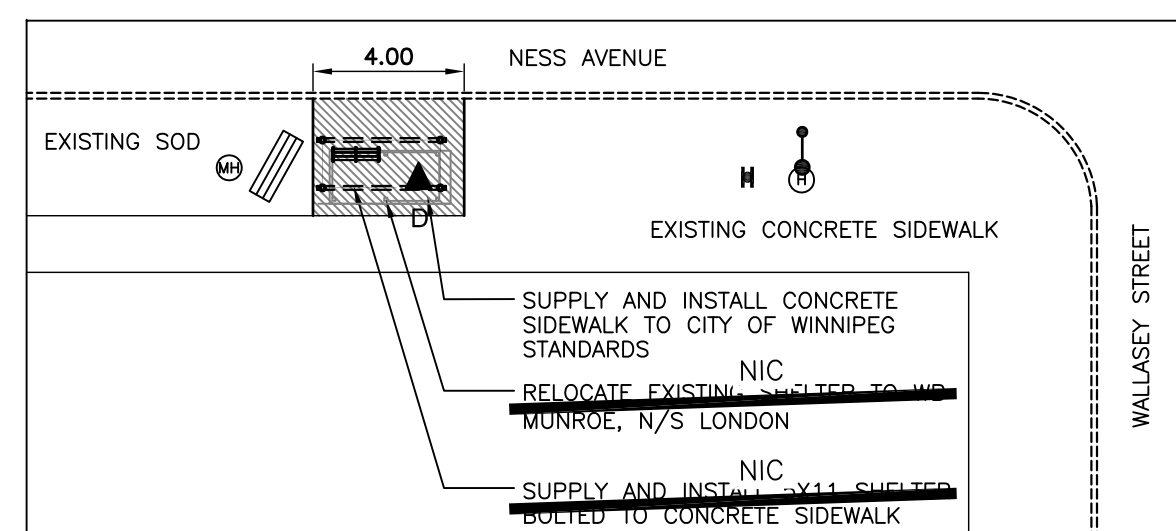
Eastbound Leila, N/S Simkin
Stop 30879 Simkin West



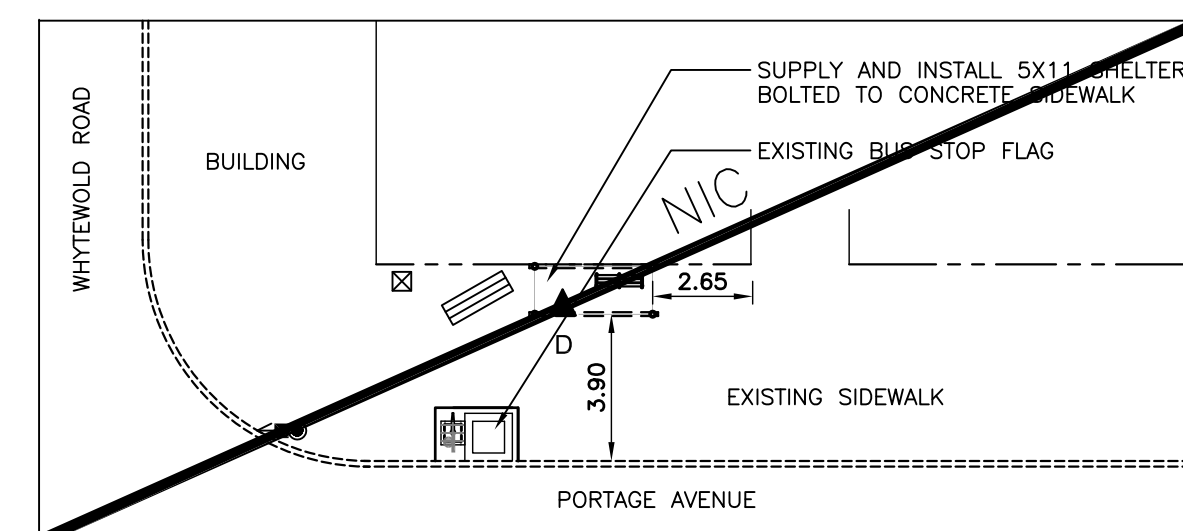
Eastbound Meadowood, N/S Dakota
Stop 50617 Dakota



Westbound Ness, F/S Moray
Stop 20156 Moray



Eastbound Ness, N/S Wallasey
Stop 20177 Wallasey



Westbound Portage, N/S Whytewold
Stop 20221 Whytewold

No.	Revisions	Date	By
Date Scale			
04-18-11		1:200	
Designed By	Drawn By	Checked By	
JW	MH	JW	



Client
WINNIPEG TRANSIT
Project Title
BUS STOP IMPROVEMENTS 2011
Sheet Title
SITE WORKS LAYOUT PLANS
Project No. 06-029
Drawing No. L1.1