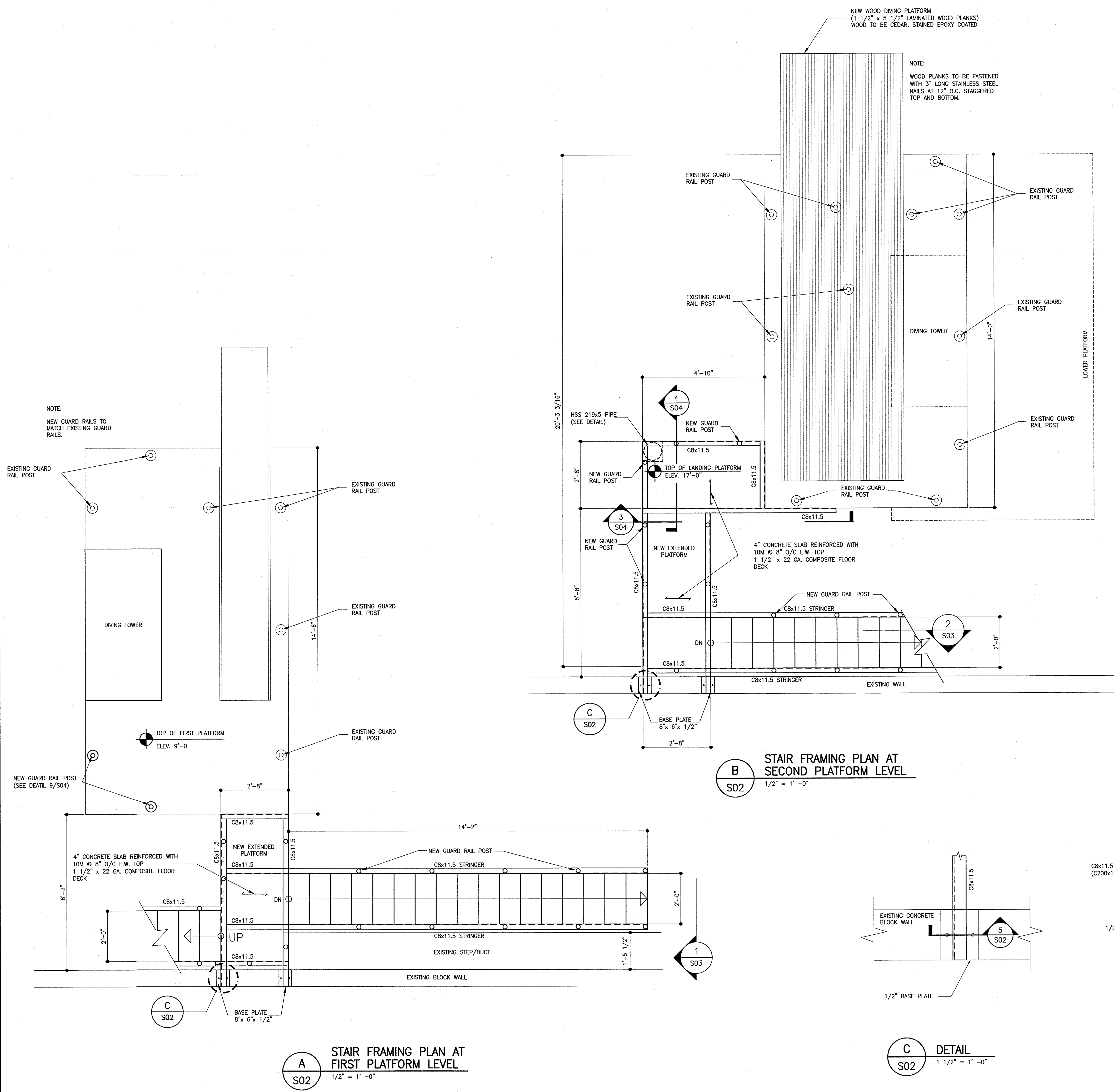


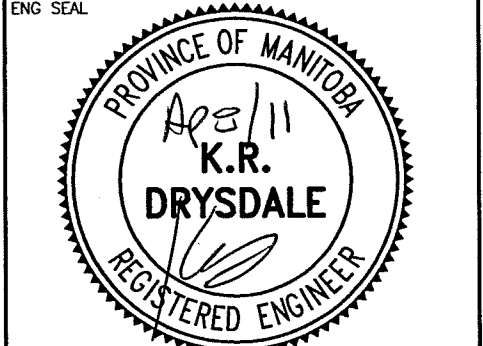
- DRAWING NOTES:**
- A. GENERAL**
- DO NOT SCALE DRAWINGS.
 - VERIFY ALL DIMENSIONS SHOWN PRIOR TO COMMENCING CONSTRUCTION.
 - VERIFY WEIGHT AND LOCATION OF ALL EQUIPMENT ON STRUCTURE AND REPORT ANY DISCREPANCIES TO ENGINEER PRIOR TO CONSTRUCTION.
 - LOCATE UNDERGROUND SERVICES AND PROTECT THEM AT ALL TIMES DURING CONSTRUCTION.
 - STRUCTURAL DRAWINGS SHOWING THE COMPLETED STRUCTURE DO NOT INDICATE COMPONENTS WHICH MAY BE NECESSARY FOR SAFETY DURING CONSTRUCTION.
- B. SELECTIVE DEMOLITION**
- REMOVE ITEMS AND MATERIALS WHERE SHOWN ON DRAWINGS. REMOVE ONLY MATERIALS REQUIRED TO ACCOMMODATE NEW CONSTRUCTION.
 - PROTECT WORK TO REMAIN.
 - PROVIDE PROTECTION TO PERSONNEL WORKING IN ADJACENT AREAS, AND TO THE PUBLIC.
 - PROVIDE INSULATED, DUSTPROOF TEMPORARY HOARDING WHERE SHOWN.
 - CAP OFF AND MAKE SAFE MECHANICAL AND ELECTRICAL SERVICES AS REQUIRED.
 - STORE AND PROTECT MATERIALS AND ITEMS TO BE INSTALLED IN RENOVATED AREAS.
 - REMOVE FROM SITE ALL MATERIALS NOT REQUIRED.
 - EXAMINE PREVAILING CONDITIONS AT SITE PRIOR TO SUBMITTING BID. NO EXTRAS SHALL BE GRANTED SHOULD ACTUAL SITE CONDITIONS DIFFER FROM THOSE INDICATED.
- C. CAST-IN-PLACE CONCRETE**
- ALL CONCRETE TO BE MANUFACTURED AND INSTALLED IN ACCORDANCE WITH LATEST EDITION OF CSA A23.1 AND CSA A23.2.
 - CONCRETE STRENGTH AT 28 DAYS SHALL BE AS FOLLOWS UNLESS NOTED OTHERWISE ON DRAWINGS:
 - STRUCTURAL SLABS AND STAIR CONCRETE STEPS:
 - 30 Mpa.
 - SUMP MAX. 90 mm.
 - AGGREGATE MAX. 20 mm.
 - ENTRAINED AIR: 4-7%
 - MASONRY FILL:
 - 20 Mpa.
 - SUMP MAX. 250 mm.
 - AGGREGATE MAX. 10 mm.
 - AIR ENTRAINING ADMIXTURES SHALL CONFORM TO REQUIREMENTS OF ASTM C260.
- D. REINFORCING STEEL**
- ALL REINFORCING STEEL TO BE CSA G30.12 M 400 MPa DEFORMED BARS EPOXY COATED. ALL REINFORCING TO BE DETAILED IN ACCORDANCE WITH LATEST EDITION OF ACI DETAILING MANUAL, UNLESS OTHERWISE NOTED.
 - REINFORCING STEEL COVER TO CONFORM TO LATEST EDITION OF CSA A23.3 AND AS FOLLOWS:
 - SLABS: 1 IN. (25 mm)
- E. STRUCTURAL STEEL**
- STRUCTURAL STEEL TO CONFORM TO CSA G40.21 "STRUCTURAL QUALITY STEEL" AND CSA G40.20 "GENERAL REQUIREMENTS FOR ROLLED OR WELDED STRUCTURAL QUALITY STEEL".
 - ROLLED OR WELDED STEEL STRUCTURAL SECTIONS AND PLATES TO BE G40.21-M (350 MPa) GRADE STEEL.
 - HOLLOW STRUCTURAL SECTIONS TO BE G40.21-M (350 MPa) CLASS C UNLESS NOTED OTHERWISE.
 - FABRICATION AND ERECTION OF STRUCTURAL STEEL TO CONFORM TO LATEST EDITION OF CAN3-S16.1, "LIMIT STATES DESIGN OF STEEL STRUCTURES".
 - ALL WELDING TO CONFORM TO CAN3-W59-1989 WELDED STEEL CONSTRUCTION.
 - FABRICATORS SHALL BE CERTIFIED IN ACCORDANCE WITH CAN3-W47.1-M83 "CERTIFICATION OF COMPANIES FOR FUSION WELDING OF STEEL STRUCTURES".
 - BOLTED CONNECTIONS TO USE A MINIMUM OF 2-A325 HIGH STRENGTH BOLTS.
 - STRUCTURAL STEEL TO RECEIVE ONE COAT OF CISC/CPMA 2-75 SHOP PRIMER.
 - STRUCTURAL STEEL SUPPLIER TO PROVIDE 1-1/2" X 3/16" (40 X 5 mm) GALVANIZED MASONRY ANCHORS AT MAX. 32" (800 mm) O.C. ON ALL COLUMNS AND BEAMS IN CONTACT WITH MASONRY UNLESS NOTED OTHERWISE.
 - NO HOLES PERMITTED IN TOP FLANGE OF BEAMS AT COLUMNS WHERE BEAMS ARE CONTINUOUS OVER COLUMNS.
 - OBTAIN CONTRACT ADMINISTRATOR'S APPROVAL PRIOR TO MAKING ANY MEMBER SUBSTITUTIONS OR CONNECTION DETAIL CHANGES.
 - PROVIDE HOLES IN STEEL SECTIONS AS REQUIRED. SECTIONS SHALL BE STRENGTHENED AS REQUIRED TO GUARANTEE ORIGINAL STRENGTH OF BEAM. CUTTING OF STEEL AT JOBSITE SHALL BE DONE ONLY AS APPROVED AND DIRECTED BY CONTRACT ADMINISTRATOR.
 - SUPPLY AND ERECT TEMPORARY GUYING AND BRACING TO PROVIDE STABILITY FOR STRUCTURE AS A WHOLE. THESE SHALL REMAIN IN PLACE UNTIL STEEL DECKING AND PERMANENT BRACING IS ERECTED AND FULLY WELDED IN PLACE AND ALL MASONRY WALLS ARE CONSTRUCTED.
 - SUBMIT ENGINEERING DRAWINGS BEARING SEAL OF A REGISTERED PROFESSIONAL ENGINEER REGISTERED IN THE PROVINCE OF MANITOBA COVERING DESIGN OF CONNECTIONS TO CONTRACT ADMINISTRATOR FOR REVIEW PRIOR TO CONSTRUCTION.
- F. STEEL DECK**
- FLOOR DECK: 1 1/2" (38 mm) - 22 GAUGE (0.76 mm) GALVANIZED COMPOSITE DECK, VIC-WEST HB-938.
- G. STEEL PAN STAIRS**
- DESIGN TO REQUIREMENTS OF NATIONAL BUILDING CODE OF CANADA FOR ALL VERTICAL AND HORIZONTAL LIVE AND DEAD LOADS ON TREADS, LANDINGS AND HANDRAILS.
 - SHOP DRAWINGS: PROVIDE ENGINEERING DRAWINGS BEARING SEAL OF A PROFESSIONAL ENGINEER REGISTERED IN THE PROVINCE OF MANITOBA FOR APPROVAL PRIOR TO CONSTRUCTION.
 - TREADS AND RISERS: STEEL PAN, CONCRETE FILLED EPOXY PAINTED FINISHED.
 - STRINGERS: STEEL CHANNELS.
 - LANDINGS: STEEL PAN, CONCRETE FILLED, REINFORCED BY STEEL ANGLES.
 - GUARDRAILS: AS DETAILED.
- H. METAL FABRICATIONS**
- PROVIDE SHOP DRAWINGS FOR APPROVAL PRIOR TO CONSTRUCTION.
 - MATERIALS: STEEL HOT ROLLED.
 - WELDING: STEEL TO CSA W59.
 - STEEL SECTIONS AND PLATES: TO CAN3 G40.21-92 GRADE 350 W.
 - STRINGERS: STEEL CHANNELS.
 - BOLTS AND ANCHORS: TO ASTM A307.
 - SHOP COAT PRIMER: TO CISC/CPMA 2-75 COLOR BROY.
- I. STAINLESS STEEL**
- PROVIDE GUARDRAILS SHOP DRAWINGS FOR APPROVAL PRIOR TO SHOP FABRICATIONS.
 - STAINLESS STEEL PRODUCT SHALL MEET 1316 MATERIAL.
 - STAINLESS STEEL GUARD RAILS SURFACE AREA SHALL BE FREE OF CONTAMINANTS SUCH AS DEPOSITS OF IRON AND NON-STAINLESS STEEL METALS.
 - PRECAUTION SHALL BE TAKEN IN HANDLING, SHIPPING, FABRICATION AND INSTALLATION OF STAINLESS STEEL GUARD RAILS.



REV	DESCRIPTION	DWN	APP	REV DATE
2	REVISED AS PER CLIENT COMMENTS	QBG	KRD	APR 15 2011
1	ISSUED FOR TENDER	QBG	KRD	APR 08 2011
0	ISSUED FOR CLIENT REVIEW	QBG	KRD	MAR 30 2011

Accutech Engineering Inc.
Tomorrow's Technology Today

605-287 Broadway, Winnipeg, Manitoba Canada R3C 0R9
Phone 204.944.1555 Fax 204.944.1444
www.accutecheng.ca



CITY OF WINNIPEG
SEVEN OAKS POOL DIVING TOWER

PROJECT: **NEW STAIRS PLANS AND NOTES**

DRAWN BY: QBG	CHECKED BY: ATD	DATE: APR 15 2011	SHEET NO: S02
DESIGNED BY: ATD	CHECKED BY: KR D	SCALE: AS NOTED	REVISION NO: 2