



**THE CITY OF WINNIPEG  
WATER AND WASTE DEPARTMENT**

**KILDONAN PARK  
LIFT STATION AND MANHOLE  
REPAIRS**



LOCATION PLAN  
N.T.S.



LIFT STATION



MANHOLE

GENERAL NOTES

GENERAL

1. Contractor must verify all geometry, dimensions, elevations and layout in the field prior to fabrication and commencement of construction, and shall notify the contract administrator of any discrepancies.
2. Contractor shall prevent construction debris from falling down into the wetwell during the repair of the manhole.
3. Any damage to existing structures including existing electrical equipment by the contractor's operation must be repaired by the contractor at his own cost.
4. The Contractor shall prevent stray currents during welding from damaging existing electrical equipment.
5. All references to codes, standards, specifications, guidelines, etc. shall mean the latest edition.

STRUCTURAL STEEL

1. Hollow structural sections shall be in accordance with CAN/CSA G40.21, grade 350W, class C. All other structural sections shall be in accordance with CAN/CSA G40.21, Grade 300W.
2. All structural steel connections shall be in accordance with CSA G40.21, Grade 300W.
3. Welding shall be undertaken by a company with proven capability in this type of work and shall have the approval of the Canadian Welding Bureau to the requirements of CSA W47.1.
4. Welding shall conform to the requirements of the latest issue of CSA W59 (latest edition).
5. Fabricator shall notify the engineer of any proposed member substitutions or changed connection details.
6. Any field modification of any members, including existing members, must be approved by the engineer, except for those members specifically shown on the drawings.
7. All members requiring field modifications (i.e., drilling holes and cutting) shall be painted prior to assembly.
8. All high strength bolts to be galvanized, and in accordance with the latest edition of ASTM A325 unless otherwise noted.

SURFACE PREPARATION AND COATING

1. All surfaces to be painted will be properly prepared in a workmanlike manner to obtain a smooth, clean and dry surface.
2. All rust, dust, and mill scale, as well as other extraneous matter, will be removed from the interior surfaces by means of near white sandblast SSPC-SP10. All external surfaces will be commercial sandblasted to SSPC-SP6.
3. Paint shall be Cloverdale Clovaguard Primer finished with Cloverdale Clovamastic or approved equal.

**ISSUED FOR PRICING  
APRIL 12, 2011**

**METRIC**

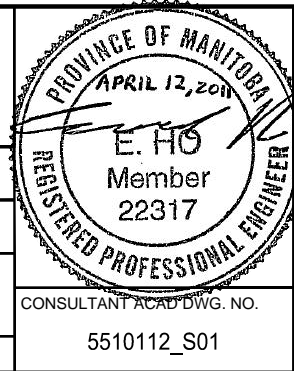
WHOLE NUMBERS INDICATE MILLIMETRES  
DECIMALIZED NUMBERS INDICATE METRES

Apr 12, 2011 - 1:12pm  
P:\5510100-5510199\5510112-000 Kildonan Park Lift Station Manhole Repairs\MMM Drawings\5510112\_04.12.11.dwg - tab:LD-5635

NOTE:  
These design documents are prepared solely for the use by the party with whom the design professional has entered into a contract and there are no representations of any kind made by the design professional to any party with whom the design professional has not entered into a contract.

NO.	REVISIONS	DATE	BY

MMM Group Limited Suite 111 - 93 Lombard Ave. Winnipeg, MB R3B 3B1 t. 204.943.3178 f. 204.943.4948 www.mmm.ca			
DESIGNED BY	EH	CHECKED BY	JPL
DRAWN BY	RCS	APPROVED BY	JPL
SCALE:	AS SHOWN	RELEASED FOR CONSTRUCTION	-
DATE:	04.12.2011	DATE	-



THE CITY OF WINNIPEG WATER AND WASTE DEPARTMENT	
<b>KILDONAN PARK LIFT STATION AND MANHOLE REPAIRS</b>	
<b>LD-5635</b>	
SHEET	1 OF 2