

- NOTES:**
1. ALL WORK AND MATERIALS TO BE IN ACCORDANCE WITH THE LATEST REVISIONS OF THE CITY OF WINNIPEG STANDARD CONSTRUCTION SPECIFICATIONS.
 2. CONTRACTOR TO VERIFY DEPTH OF UTILITIES PRIOR TO CONSTRUCTION.
 3. LOCATION OF UNDERGROUND STRUCTURES AS SHOWN ARE BASED ON THE BEST INFORMATION AVAILABLE, BUT NO GUARANTEE IS GIVEN THAT ALL EXISTING UTILITIES ARE SHOWN OR THAT THE GIVEN LOCATIONS ARE EXACT. CONFIRMATION OF EXISTENCE AND EXACT LOCATION OF ALL SERVICES MUST BE OBTAINED FROM THE INDIVIDUAL UTILITIES BEFORE PROCEEDING WITH CONSTRUCTION.
 4. EXCAVATED MATERIAL TO BE USED AS BACKFILL WHERE REQUIRED.
 5. ALL SURFACES TO BE MAINTAINED OR RESTORED TO PREVIOUS CONDITION OR BETTER.
 6. THE LIGHTING WILL CONSIST OF 100W HPS POST TOP LUMINARIES INSTALLED ADJACENT TO THE PATHWAY. ALL LIGHTING TO BE CONTROLLED VIA AN OUTDOOR DISTRIBUTION CABINET C/W PHOTOCCELL.
 7. POST TOP LUMINARIES TO BE VANDAL-RESISTANT SCL LIGHTING: VP80-LR2-100S-120/240-H11-PC/8G. LUMINARIES TO BE MOUNTED ON 15 FOOT STEEL POLES. POLES TO BE INSTALLED ON POURED CONCRETE BASES REFER TO SCD-652R. NOTE THAT BASE TO EXTEND 50mm ABOVE GRADE.
 8. ALL LUMINAIRE LOCATIONS TO BE CONFIRMED BY CONTRACT ADMINISTRATOR PRIOR TO COMMENCING WORK.
 9. THE CONTRACTOR SHALL INFORM THE CONTRACT ADMINISTRATOR AT LEAST FIVE DAYS IN ADVANCE OF POURING THE BASES TO ALLOW THE CONTRACT ADMINISTRATOR TO VERIFY LOCATIONS AND WITNESS PROCESSES. THE CONTRACTOR TO ALSO INFORM THE CONTRACT ADMINISTRATOR AT LEAST FIVE DAYS IN ADVANCE OF THE TRENCHING TO ALLOW THE CONTRACT ADMINISTRATOR TO WITNESS THE PROCESS.
 10. ALL DIMENSIONS IN METERS UNLESS INDICATED OTHERWISE.
 11. TRENCHING
 12. CONTRACTOR TO PROVIDE TRENCHING REQUIRED TO POWER ALL LUMINARIES. DEPTH TO BE MINIMUM 600mm AS PER ELECTRICAL CODE. WIRING TO BE DIRECT-BURY RWJ. PROVIDE MINIMUM 150mm SAND ABOVE AND BELOW WIRING. MAINTAIN ACCURATE LOCATIONS OF TRENCHING FOR INCLUSION ON AS-BUILT DRAWINGS.
 13. CONTRACTOR TO COORDINATE TRENCHING WITH CONTRACT ADMINISTRATOR AND OTHER ON SITE CONTRACTORS COMPLETING LANDSCAPE WORK.
 14. CONTRACTOR TO PROVIDE SOIL COMPACTION TO 95% PROCTOR DENSITY. RE-SOO AS REQUIRED IN ACCORDANCE WITH THE CITY OF WINNIPEG STANDARD CONSTRUCTION SPECIFICATIONS CW 3510 TO RETURN AREA TO ORIGINAL CONDITION.



METRIC
WHOLE NUMBERS INDICATE MILLIMETERS
DECIMALIZED NUMBERS INDICATE METERS

NOTE:
These design documents are prepared solely for the use by the party with whom the design professional has contracted for a service and there are no representations of any kind made by the design professional to any party with whom the design professional has no contractual relationship.

231.99	ELEVATION	(32.50)	+	HYDRANT	---	EXISTING GROUND	---
○	WATER VALVE			150mm BARRIER CURB	---	PROPOSED CENTERLINE	---
□	MANHOLE			CONCRETE	---		---
	CATCH BASIN			ASPHALT	---		---
	MTS CABLE		LS →	LIGHT STANDARD	---		---
	LDS				---		---
	WWS				---		---
	WATER				---		---
	PROPERTY LINE				---		---
HP	HYDRO POLE				---		---
●	HYDRO POLE WITH LIGHT				---		---
---	EXISTING			LEGEND-PLAN	---	EXISTING	---
---	PROPOSED			LEGEND-PLAN	---	PROPOSED	---
---	EXISTING			LEGEND-PROFILE	---	EXISTING	---
---	PROPOSED			LEGEND-PROFILE	---	PROPOSED	---

LOCATIONS APPROVED

STRUCTURES

SIGNED BY: _____ DATE: _____

SUPV U/G STRUCTURES _____ DATE _____

LOCATION OF UNDERGROUND STRUCTURES AS SHOWN ARE BASED ON THE BEST INFORMATION AVAILABLE BUT NO GUARANTEE IS GIVEN THAT ALL EXISTING UTILITIES ARE SHOWN OR THAT THE GIVEN LOCATIONS ARE EXACT CONFIRMATION OF EXISTENCE AND EXACT LOCATION OF ALL SERVICES MUST BE OBTAINED FROM THE INDIVIDUAL UTILITIES BEFORE PROCEEDING

G.B.M. TBL IN 3.7m CONC PILE, 3.7m N OF S.L. OF PORTAGE AVE, & 3.4m E OF LINE OF W.L. OF KING EDWARD ST. ELEV. 235.437m

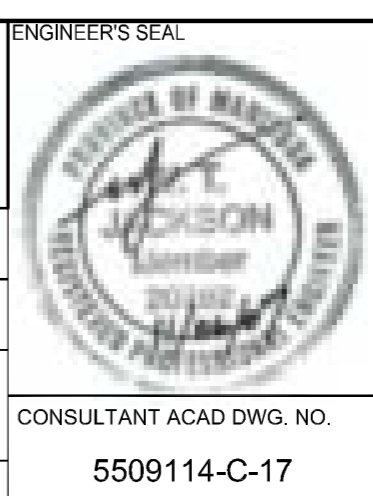
NO.	REVISIONS	DATE	BY
4	ISSUED FOR TENDER	07.06.11	RP
3	FOR CITY REVIEW	05.05.11	RP
2	FOR CITY REVIEW - OPTION 2	03.05.11	RP
1	FOR REVIEW	27.04.11	WTJ

MMM GROUP

DESIGNED BY: RP
CHECKED BY: -
DRAWN BY: TR
APPROVED BY: RP

HOR. SCALE 1:200
VERTICAL 1:50

DATE: 10.09.10



ENGINEER'S SEAL

MMM Group Limited
Suite 111 - 93 Lombard Ave
Winnipeg, MB R2B 3B1
T: 204.943.3179
F: 204.943.4548
www.mmm.ca

CITY OF WINNIPEG
PUBLIC WORKS DEPARTMENT
TRANSPORTATION ENGINEERING DIVISION

2010 ACTIVE TRANSPORTATION/
INFRASTRUCTURE STIMULUS PROGRAM
OMAND PARK UPGRADES

MULTI-USE PATH
PORTAGE AVENUE SIDEWALK

CONSULTANT ACAD DWG. NO.
5509114-C-17

C-17

SHEET 4 OF 5

Jun 07 2011 - 2:48pm
P:\5509114-C-17\5509114-000 2010 Active Transportation Infrastructure Stimulus Program\MMM Drawings\Omand Park Upgrades\5509114 Omand Park C-14-18_030611.dwg -tab.C-17