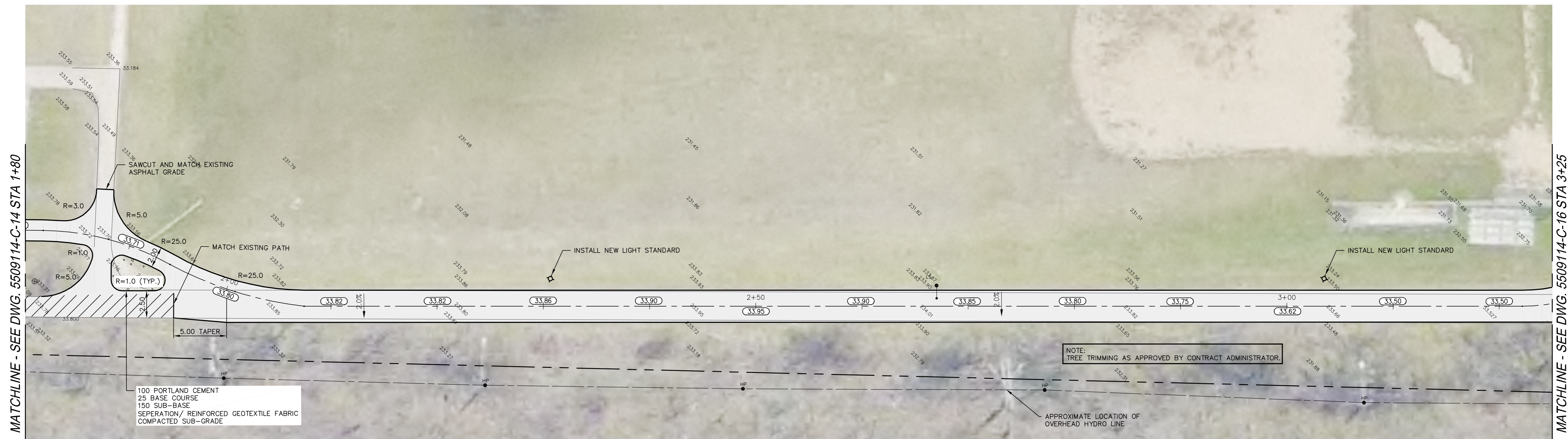
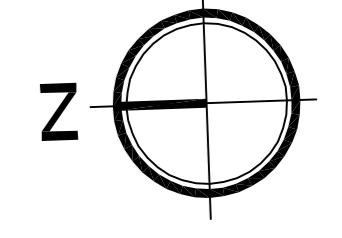
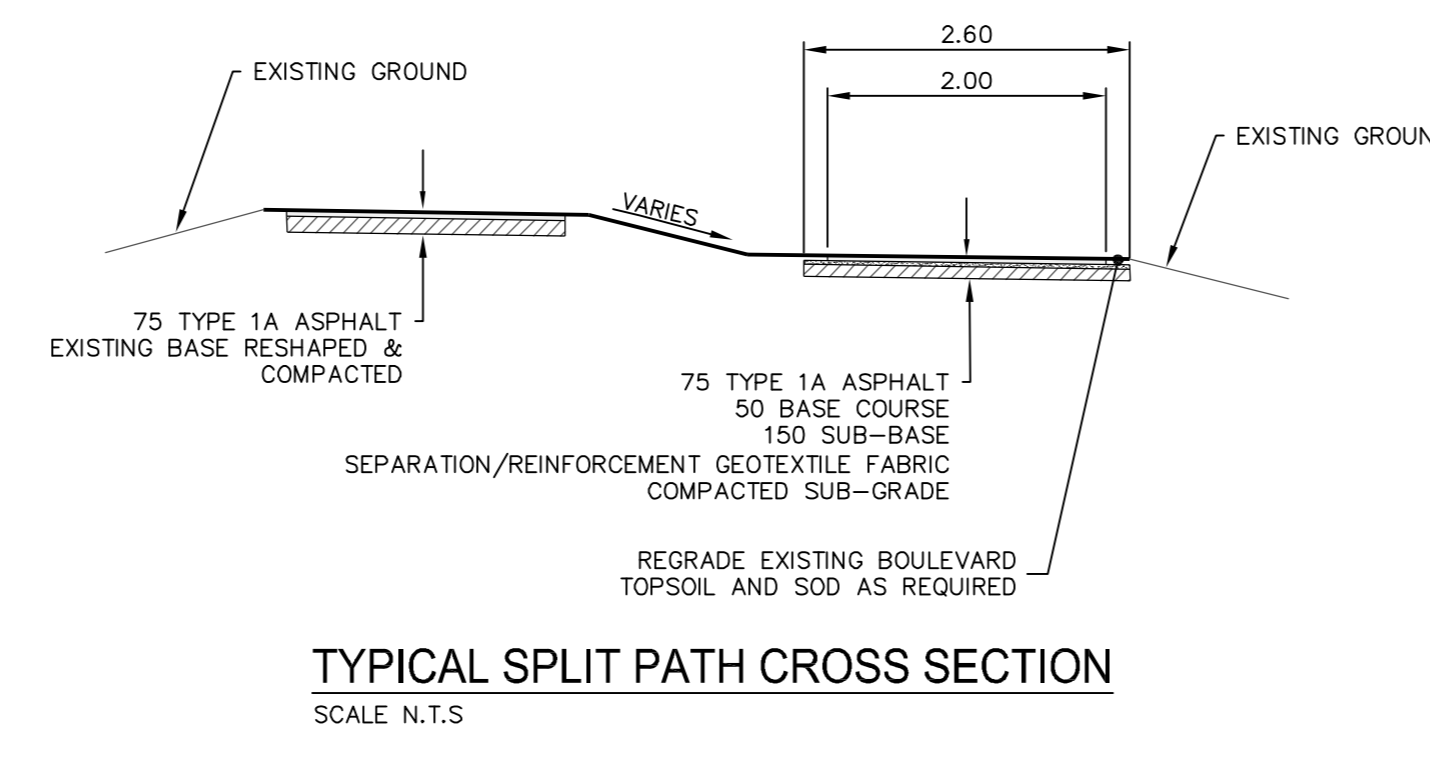
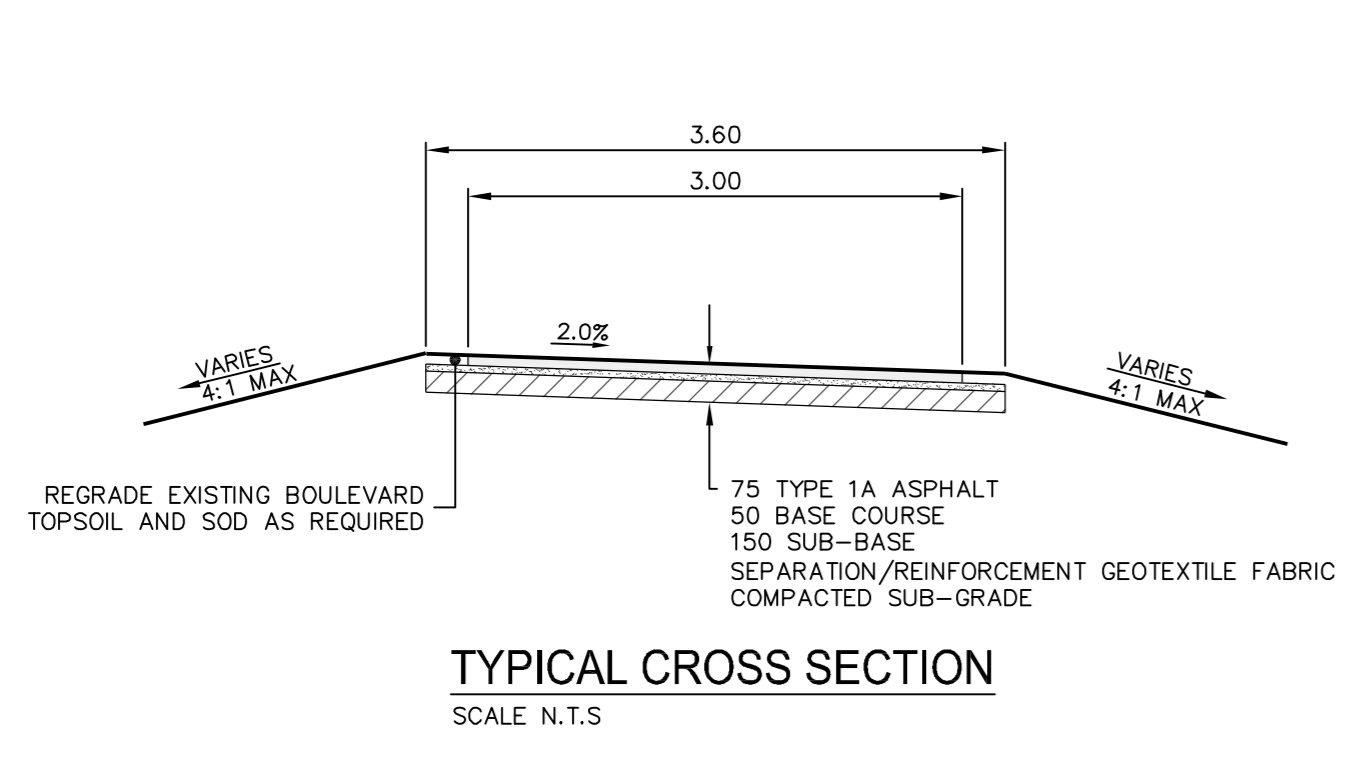


OMAND PARK MULTI-USE PATH



MATCHLINE - SEE DWG. 5509114-C-14 STA 1+80

MATCHLINE - SEE DWG. 5509114-C-16 STA 3+25



- NOTES:**
- ALL WORK AND MATERIALS TO BE IN ACCORDANCE WITH THE LATEST REVISIONS OF THE CITY OF WINNIPEG STANDARD CONSTRUCTION SPECIFICATIONS.
 - CONTRACTOR TO VERIFY DEPTH OF UTILITIES PRIOR TO CONSTRUCTION.
 - LOCATION OF UNDERGROUND STRUCTURES AS SHOWN ARE BASED ON THE BEST INFORMATION AVAILABLE, BUT NO GUARANTEE IS GIVEN THAT ALL EXISTING UTILITIES ARE SHOWN OR THAT THE GIVEN LOCATIONS ARE EXACT. CONFIRMATION OF EXISTENCE AND EXACT LOCATION OF ALL SERVICES MUST BE OBTAINED FROM THE INDIVIDUAL UTILITIES BEFORE PROCEEDING WITH CONSTRUCTION.
 - EXCAVATED MATERIAL TO BE USED AS BACKFILL WHERE REQUIRED.
 - ALL SURFACES TO BE MAINTAINED OR RESTORED TO PREVIOUS CONDITION OR BETTER.
 - THE LIGHTING WILL CONSIST OF 100W HPS POST TOP LUMINARIES INSTALLED ADJACENT TO THE PATHWAY. ALL LIGHTING TO BE CONTROLLED VIA AN OUTDOOR DISTRIBUTION CABINET C/W PHOTOCCELL.
 - POST TOP LUMINARIES TO BE VANDAL-RESISTANT SCL LIGHTING: VP80-LR2-100S-120/240-H11-PC/BG. LUMINARIES TO BE MOUNTED ON 15 FOOT STEEL POLES. POLES TO BE INSTALLED ON POURED CONCRETE BASES REFER TO SCD-652R. NOTE THAT BASE TO EXTEND 50mm ABOVE GRADE.
 - ALL LUMINAIRE LOCATIONS TO BE CONFIRMED BY CONTRACT ADMINISTRATOR PRIOR TO COMMENCING WORK.
 - THE CONTRACTOR SHALL INFORM THE CONTRACT ADMINISTRATOR AT LEAST FIVE DAYS IN ADVANCE OF POURING THE BASES TO ALLOW THE CONTRACT ADMINISTRATOR TO VERIFY LOCATIONS AND WITNESS PROCESSES. THE CONTRACTOR TO ALSO INFORM THE CONTRACT ADMINISTRATOR AT LEAST FIVE DAYS IN ADVANCE OF THE TRENCHING TO ALLOW THE CONTRACT ADMINISTRATOR TO WITNESS THE PROCESS.
 - ALL DIMENSIONS IN METERS UNLESS INDICATED OTHERWISE.
 - TRENCHING
 - CONTRACTOR TO PROVIDE TRENCHING REQUIRED TO POWER ALL LUMINARIES. DEPTH TO BE MINIMUM 600mm AS PER ELECTRICAL CODE. WIRING TO BE DIRECT-BURY RWU. PROVIDE MINIMUM 150mm SAND ABOVE AND BELOW WIRING. MAINTAIN ACCURATE LOCATIONS OF TRENCHING FOR INCLUSION ON AS-BUILT DRAWINGS.
 - CONTRACTOR TO COORDINATE TRENCHING WITH CONTRACT ADMINISTRATOR AND OTHER ON SITE.
 - CONTRACTOR TO PROVIDE SOIL COMPACTION TO 95% PROCTOR DENSITY. RE-SOD AS REQUIRED IN ACCORDANCE WITH THE CITY OF WINNIPEG STANDARD CONSTRUCTION SPECIFICATIONS CW 3510 TO RETURN AREA TO ORIGINAL CONDITION.

APEGM
Certificate of Authorization
MMM Group Limited
No. 4531 Date: JUNE 6, 2011

METRIC
WHOLE NUMBERS INDICATE MILLIMETERS
DECIMALIZED NUMBERS INDICATE METERS

NOTE:
These design documents are prepared solely for the use by the party with whom the design professional has contracted and their use for any other purpose is prohibited. The design professional is not responsible for any errors or omissions in these documents.

EXISTING	LEGEND-PLAN	PROPOSED	EXISTING	LEGEND-PLAN	PROPOSED	EXISTING	LEGEND-PROFILE	PROPOSED
○	ELEVATION	(32.50)	◇	HYDRANT	---	---	EXISTING GROUND	---
○	WATER VALVE		◇	150mm BARRIER CURB	---	---	PROPOSED CENTERLINE	---
□	MANHOLE		◇	CONCRETE	---	---		
□	CATCH BASIN		◇	ASPHALT	---	---		
○	MTS CABLE		◇	LIGHT STANDARD	☆	☆		
○	LDS		◇					
○	WWS		◇					
---	WATER		◇					
---	PROPERTY LINE		◇					
HP	HYDRO POLE		◇					
HP	HYDRO POLE WITH LIGHT		◇					

LOCATIONS APPROVED

NO.	REVISIONS	DATE	BY
4	ISSUED FOR TENDER	07.06.11	RP
3	FOR CITY REVIEW	05.05.11	RP
2	FOR CITY REVIEW - OPTION 2	03.05.11	RP
1	FOR REVIEW	27.04.11	WTJ

G.B.M. TBLT IN 3.7m CONC PILE, 3.7m N OF S.L. OF PORTAGE AVE, & 3.4m E OF LINE OF W.L. OF KING EDWARD ST. 235-437m

MMM GROUP

DESIGNED BY: RP
CHECKED BY: -
DRAWN BY: TR
APPROVED BY: RP

HOR. SCALE 1:200
VERTICAL 1:50

RELEASED FOR CONSTRUCTION

DATE: 10.09.10

ENGINEER'S SEAL

PROVINCE OF MANITOBA
REGISTERED PROFESSIONAL ENGINEER
JACKSON
20182

CONSULTANT ACAD DWG. NO.
5509114-C-15

CITY OF WINNIPEG
PUBLIC WORKS DEPARTMENT
TRANSPORTATION ENGINEERING DIVISION

2010 ACTIVE TRANSPORTATION/
INFRASTRUCTURE STIMULUS PROGRAM
OMAND PARK UPGRADES

MULTI-USE PATH
STA. 1+80.00 TO 3+25.00

C-15

SHEET 2 OF 5

Jun 07, 2011 2:47pm
 P:\3509114-000 2010 Active Transportation Infrastructure Stimulus Program\MMM Drawings\Omand Park Upgrades\5509114 Omand Park C-14-18_030611.dwg -tab-C-15