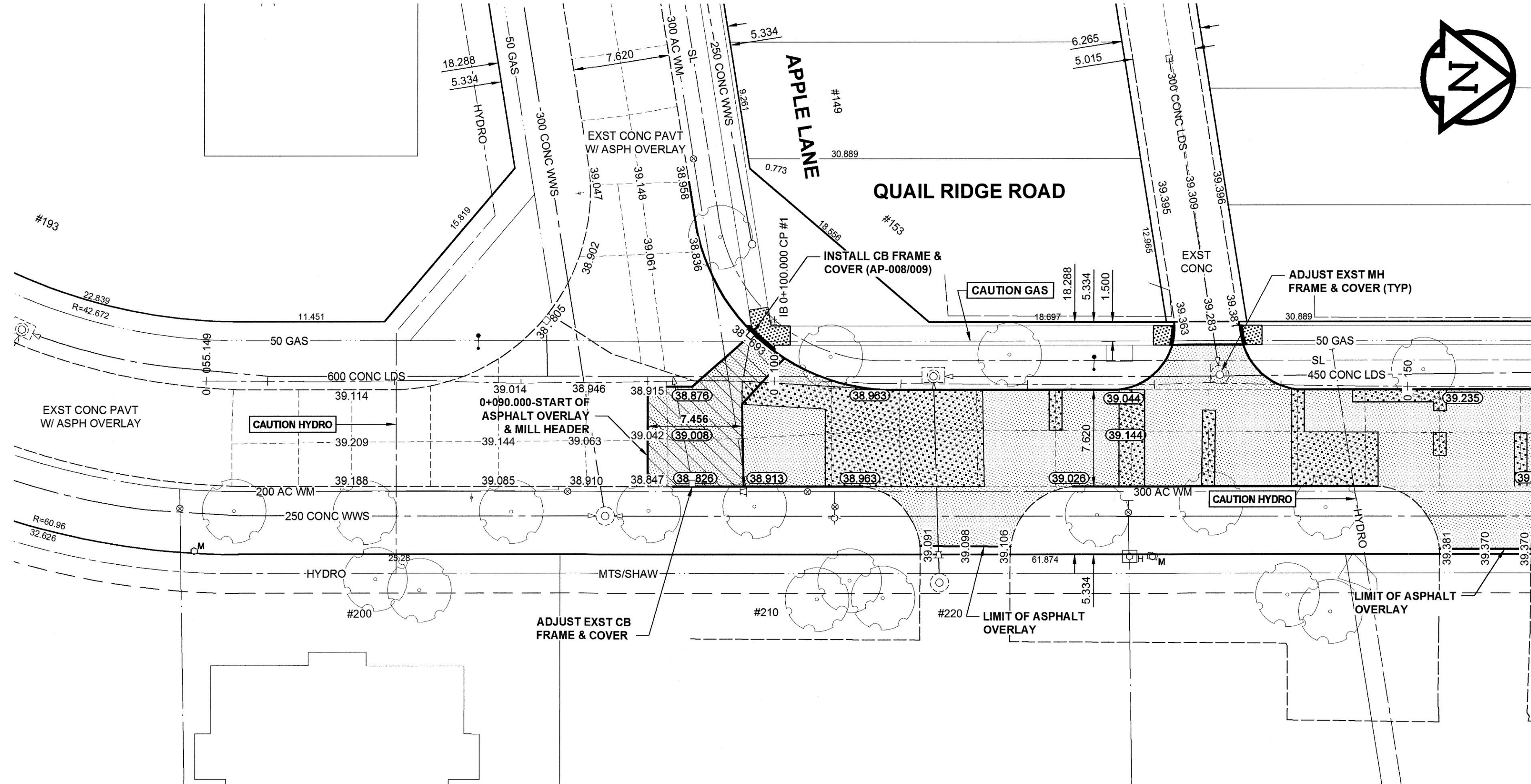
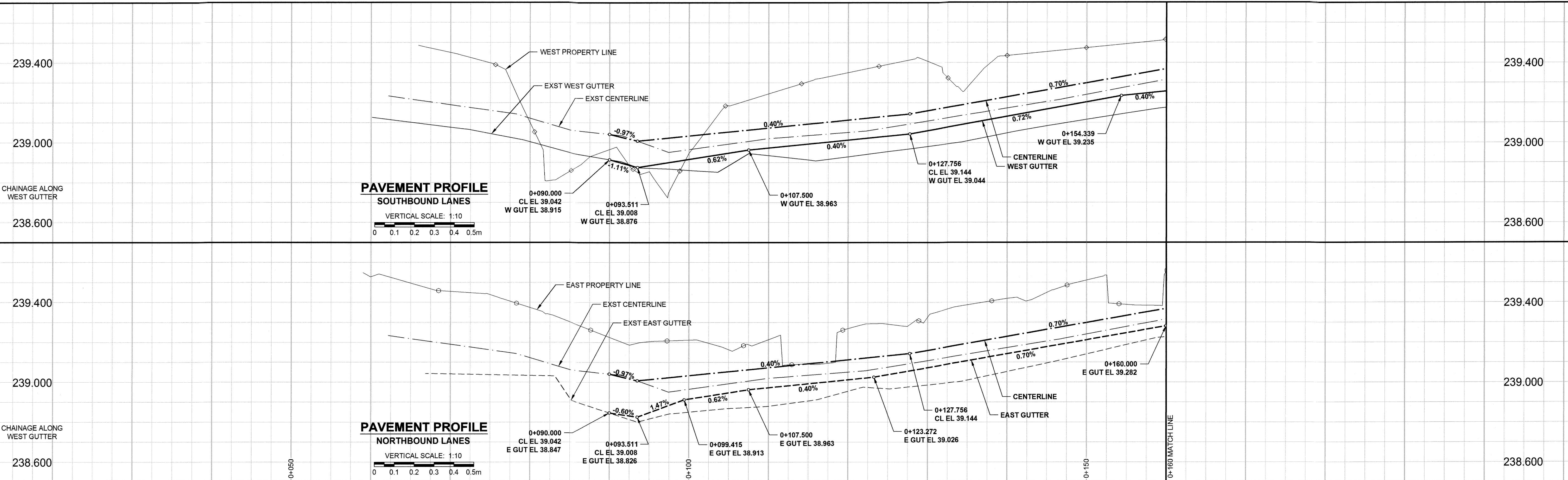


A1 SIZE 594mm x 841mm

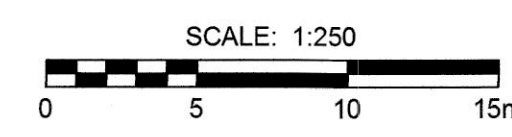
FILE NAME: W11400100-T-026\_RX.dwg, Saved By: dlane

PL01: 5/31/2011 3:15:01 PM



- NOTES**
1. ADJUST MH AND CB RIMS TO NEW GRADES.
  2. LAMP STANDARDS, HYDRO POLES, AND ANCHORS MAY REQUIRE TEMPORARY SUPPORT/REMOVAL OR REPLACEMENT AT THE CONTRACTOR'S EXPENSE.
  3. CONTRACTOR SHALL REGRADE/RENEW EXST PRIVATE SIDEWALKS TO LIMITS AS SHOWN. SIDEWALKS TO BE RENEWED WITH CONCRETE UNLESS NOTED OTHERWISE.
  4. CONTRACTOR SHALL TAKE PRECAUTIONARY STEPS TO PROTECT EXISTING TREES WITHIN THE LIMITS OF CONSTRUCTION FROM DAMAGE FROM CONSTRUCTION ACTIVITIES AS OUTLINED IN THE SPECIFICATIONS.
  5. MODIFIED BARRIER CURB TO BE USED AT ALL INTERSECTION RADII, BACK LANE RADII AND BULLNOSES.
  6. THE LOCATION OF ALL SERVICES TO BE CONFIRMED IN THE FIELD BY THE CONTRACTOR.
  7. ADD 200.000m TO ABBREVIATED ELEVATIONS TO OBTAIN GEODETIC ELEVATIONS.

**METRIC**  
WHOLE NUMBERS INDICATE MILLIMETRES  
DECIMALIZED NUMBERS INDICATE METRES



**APEGM**  
Certificate of Authorization  
MORRISON HERSHFIELD  
No. 1736 Date: June 1/11  
BID OPPORTUNITY No. 262-2011

|  |                           |  |                         |  |                        |
|--|---------------------------|--|-------------------------|--|------------------------|
|  | GAS                       |  | MANHOLE                 |  | CONCRETE PAVEMENT      |
|  | MTS                       |  | CATCH BASIN / CATCH PIT |  | CONC SIDEWALK / MEDIAN |
|  | HYDRO                     |  | CURB INLET WITH BOX     |  | ASPHALT PAVEMENT       |
|  | CATV / FIBRE OPTIC        |  | TREE                    |  | PAVING STONE           |
|  | TRAFFIC SIGNALS / PIT     |  | TEST HOLE               |  | GRAVEL                 |
|  | LAND DRAINAGE SEWER       |  | PROPERTY LINE           |  | RAMP CURB              |
|  | SANITARY / COMBINED SEWER |  | SURVEY BAR              |  | PLANING / REMOVAL      |
|  | SEWER SERV/DRAINAGE CONN  |  | FENCE                   |  |                        |
|  | WATERMAIN                 |  | BOC / EDGE OF PAVEMENT  |  |                        |
|  | SUBDRAIN                  |  | ELEVATION               |  |                        |
|  | DITCH                     |  | TRAFFIC SIGN            |  |                        |
|  | EXISTING                  |  | LEGEND - PLAN           |  | EXISTING               |
|  | NEW                       |  | LEGEND - PLAN           |  | NEW                    |

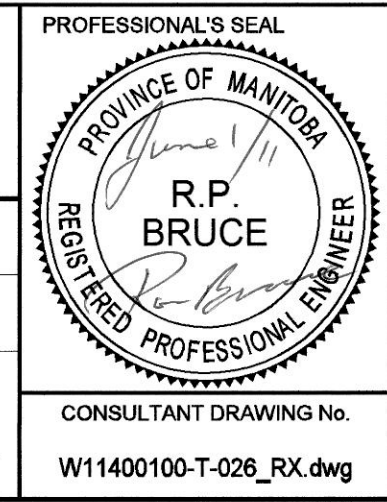
**LOCATION APPROVED UNDERGROUND STRUCTURES**

|    |      |
|----|------|
| BY | DATE |
|    |      |

**NOTE:**  
LOCATION OF UNDERGROUND STRUCTURES AS SHOWN ARE BASED ON THE BEST INFORMATION AVAILABLE. BUT NO GUARANTEE IS GIVEN THAT ALL EXISTING UTILITIES ARE SHOWN OR THAT THE GIVEN LOCATIONS ARE EXACT. CONFIRMATION OF EXISTENCE AND EXACT LOCATION OF ALL SERVICES MUST BE OBTAINED FROM THE INDIVIDUAL UTILITIES BEFORE PROCEEDING WITH CONSTRUCTION.

**MORRISON HERSHFIELD**

|             |       |                           |                 |
|-------------|-------|---------------------------|-----------------|
| DESIGNED BY | RPB   | CHECKED BY                | JGK             |
| DRAWN BY    | DID   | APPROVED BY               | BWB             |
| HOR. SCALE  | 1:250 | RELEASED FOR CONSTRUCTION | <i>K.A. ...</i> |
| VERT. SCALE | 1:10  | DATE                      | June 1/11       |



**THE CITY OF WINNIPEG**  
PUBLIC WORKS DEPARTMENT  
ENGINEERING DIVISION

**2011 LOCAL STREET RENEWAL PROGRAM**

**QUAIL RIDGE RD - REHABILITATION**  
APPLE LN TO SASKATCHEWAN AVE

STA 0+090 TO STA 0+160

|                     |          |
|---------------------|----------|
| CITY DRAWING NUMBER | N/A      |
| SHEET               | 26 OF 29 |
| DRAWING No.         | 26       |
| REV                 | 0        |