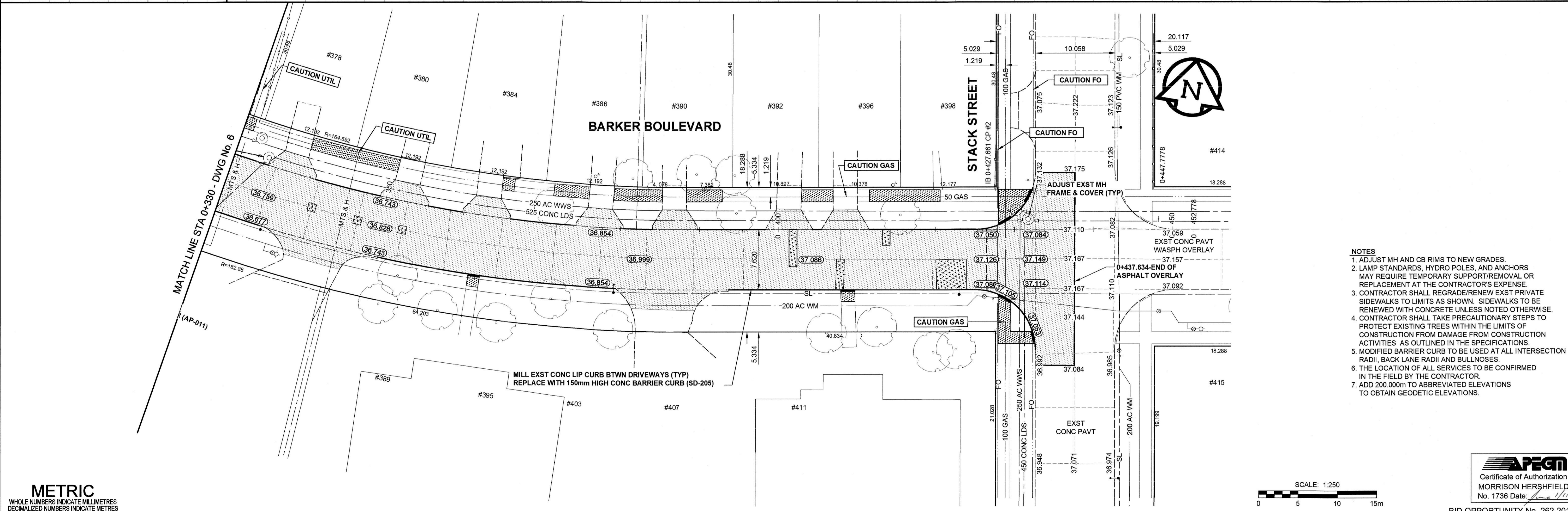
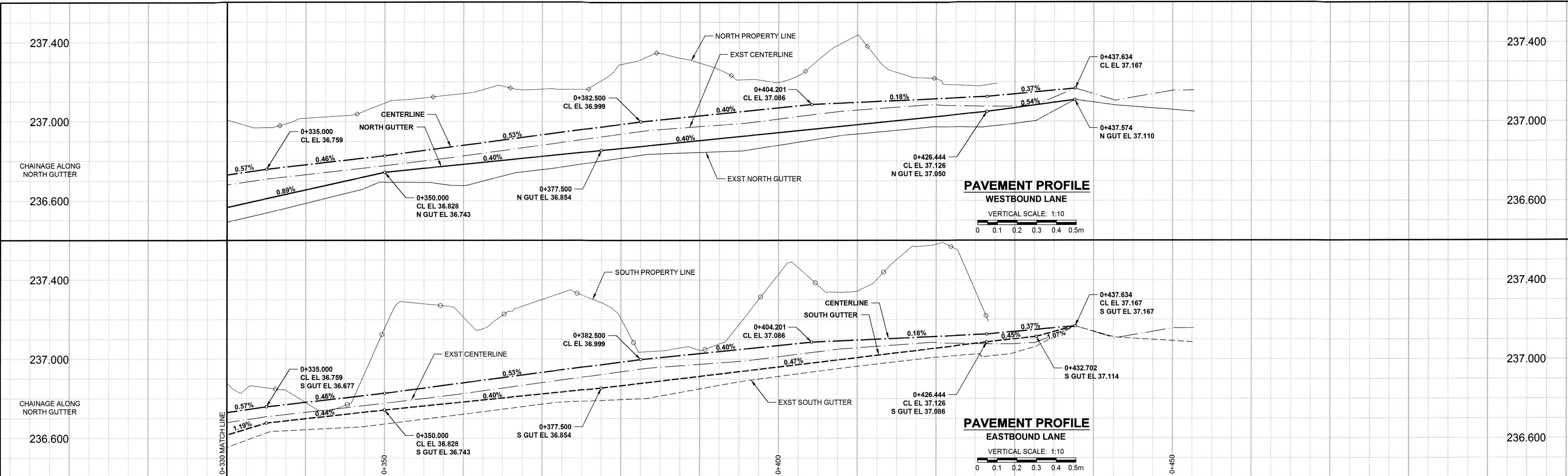


A1 SIZE 594mm x 841mm

PL01-5/31/2011 2:44:21 PM

FILE NAME: W11400100-T-007\_RX.dwg Saved By: dlane



- NOTES**
1. ADJUST MH AND CB RIMS TO NEW GRADES.
  2. LAMP STANDARDS, HYDRO POLES, AND ANCHORS MAY REQUIRE TEMPORARY SUPPORT/REMOVAL OR REPLACEMENT AT THE CONTRACTOR'S EXPENSE.
  3. CONTRACTOR SHALL REGRADE/RENEW EXIST PRIVATE SIDEWALKS TO LIMITS AS SHOWN. SIDEWALKS TO BE RENEWED WITH CONCRETE UNLESS NOTED OTHERWISE.
  4. CONTRACTOR SHALL TAKE PRECAUTIONARY STEPS TO PROTECT EXISTING TREES WITHIN THE LIMITS OF CONSTRUCTION FROM DAMAGE FROM CONSTRUCTION ACTIVITIES AS OUTLINED IN THE SPECIFICATIONS.
  5. MODIFIED BARRIER CURB TO BE USED AT ALL INTERSECTION RADII, BACK LANE RADII AND BULLNOSES.
  6. THE LOCATION OF ALL SERVICES TO BE CONFIRMED IN THE FIELD BY THE CONTRACTOR.
  7. ADD 200.000m TO ABBREVIATED ELEVATIONS TO OBTAIN GEODETIC ELEVATIONS.

**METRIC**  
WHOLE NUMBERS INDICATE MILLIMETRES  
DECIMALIZED NUMBERS INDICATE METRES

|  |                                 |  |                                |  |                               |
|--|---------------------------------|--|--------------------------------|--|-------------------------------|
|  | <b>GAS</b>                      |  | <b>MANHOLE</b>                 |  | <b>CONCRETE PAVEMENT</b>      |
|  | <b>MTS</b>                      |  | <b>CATCH BASIN / CATCH PIT</b> |  | <b>CONC SIDEWALK / MEDIAN</b> |
|  | <b>HYDRO</b>                    |  | <b>CURB INLET WITH BOX</b>     |  | <b>ASPHALT PAVEMENT</b>       |
|  | <b>CATV / FIBRE OPTIC</b>       |  | <b>TREE</b>                    |  | <b>PAVING STONE</b>           |
|  | <b>TRAFFIC SIGNALS / PIT</b>    |  | <b>TEST HOLE</b>               |  | <b>GRAVEL</b>                 |
|  | <b>LAND DRAINAGE SEWER</b>      |  | <b>PROPERTY LINE</b>           |  | <b>RAMP CURB</b>              |
|  | <b>SANITARY/COMBINED SEWER</b>  |  | <b>SURVEY BAR</b>              |  | <b>PLANING / REMOVAL</b>      |
|  | <b>SEWER SERV/DRAINAGE CONN</b> |  | <b>FENCE</b>                   |  |                               |
|  | <b>WATERMAIN</b>                |  | <b>BOC / EDGE OF PAVEMENT</b>  |  |                               |
|  | <b>SUBDRAIN</b>                 |  | <b>ELEVATION</b>               |  |                               |
|  | <b>DITCH</b>                    |  | <b>TRAFFIC SIGN</b>            |  |                               |
|  | <b>EXISTING</b>                 |  | <b>LEGEND - PLAN</b>           |  | <b>EXISTING</b>               |
|  | <b>NEW</b>                      |  | <b>LEGEND - PLAN</b>           |  | <b>NEW</b>                    |

**LOCATION APPROVED UNDERGROUND STRUCTURES**

|      |                         |              |
|------|-------------------------|--------------|
| BM   | GBM No. 48-034          |              |
| ELEV | 236.737m                |              |
| No.  | ISSUED FOR CONSTRUCTION | 11/06/01 RPB |
|      | REVISIONS               | YYMMDD BY    |

**NOTE:**  
LOCATION OF UNDERGROUND STRUCTURES AS SHOWN ARE BASED ON THE BEST INFORMATION AVAILABLE. BUT NO GUARANTEE IS GIVEN THAT ALL EXISTING UTILITIES ARE SHOWN OR THAT THE GIVEN LOCATIONS ARE EXACT. CONFIRMATION OF EXISTENCE AND EXACT LOCATION OF ALL SERVICES MUST BE OBTAINED FROM THE INDIVIDUAL UTILITIES BEFORE PROCEEDING WITH CONSTRUCTION.

**MORRISON HERSHFELD**

DESIGNED BY: RPB  
CHECKED BY: JGK  
DRAWN BY: DID/DML  
APPROVED BY: BWB

HOR. SCALE: 1:250  
VERT. SCALE: 1:10

DATE: 11/06/01

PROFESSIONAL'S SEAL

PROVINCE OF MANITOBA  
REGISTERED PROFESSIONAL ENGINEER

R.P. BRUCE

CONSULTANT DRAWING No. W11400100-T-007\_RX.dwg

**THE CITY OF WINNIPEG**  
PUBLIC WORKS DEPARTMENT  
ENGINEERING DIVISION

**2011 LOCAL STREET RENEWAL PROGRAM**  
BARKER BLVD (S.LEG) - REHABILITATION  
SINNOTT ST TO STACK ST

SCALE: 1:250

CITY DRAWING NUMBER: N/A  
SHEET: 7 OF 29  
DRAWING No.: 7  
REV: 0

STA 0+330 TO STA 0+437

BID OPPORTUNITY No. 262-2011