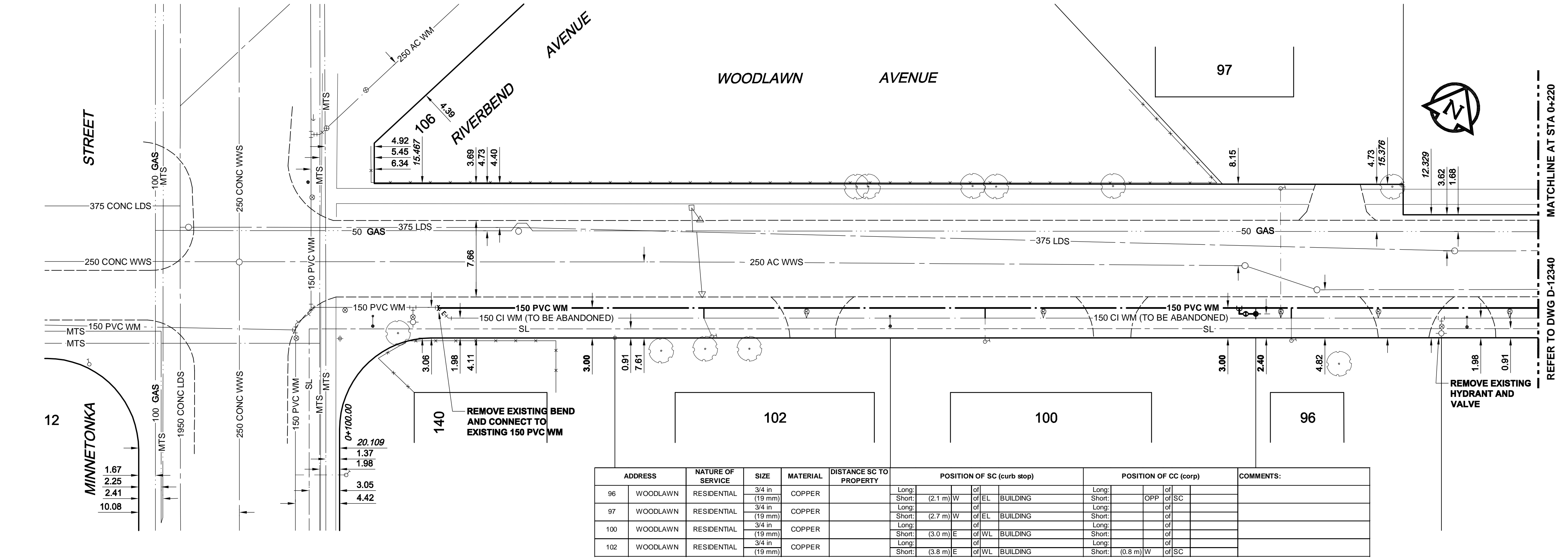
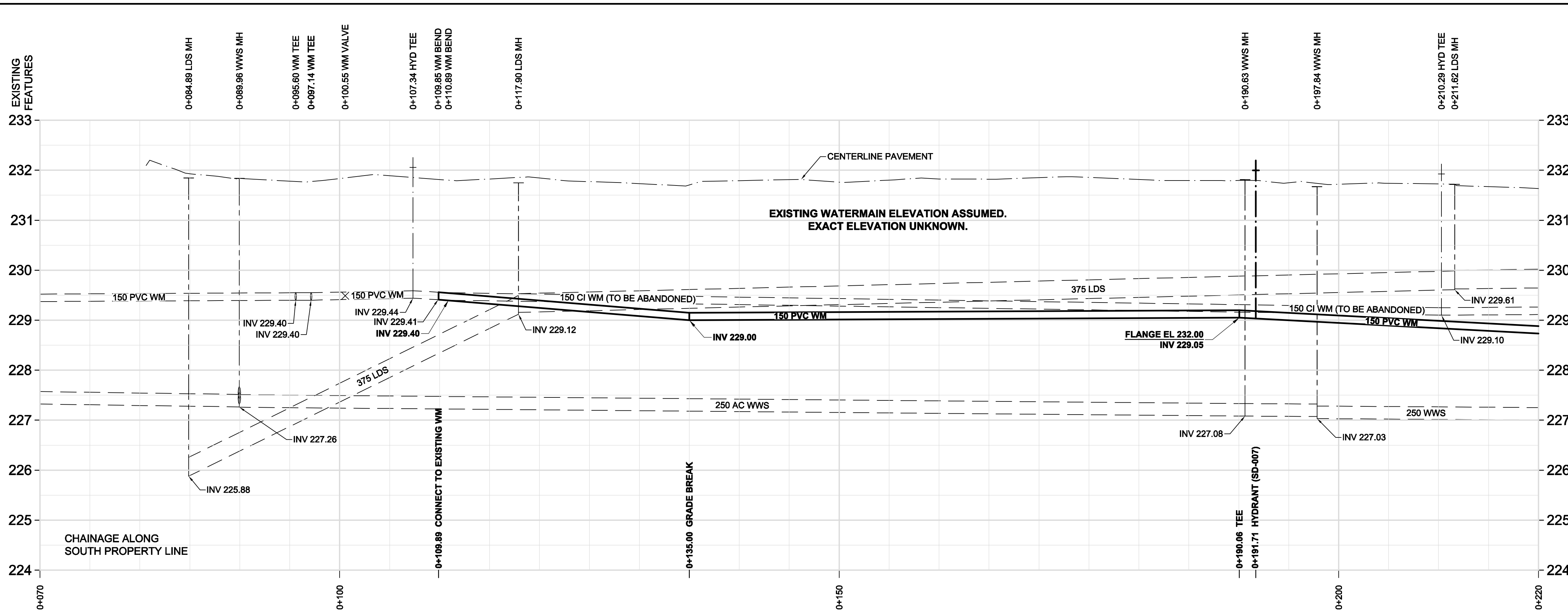


D SIZE 22" x 34" (559mm x 864mm)

PLOT: 11/04/07 12:35:09 PM

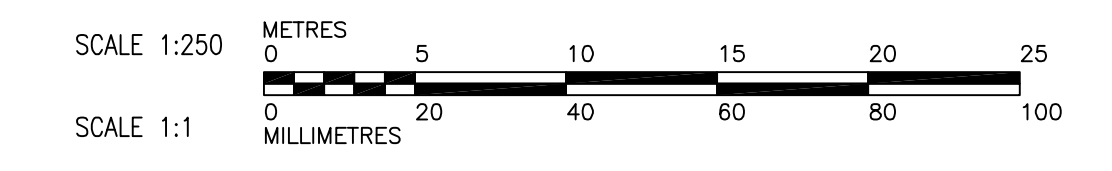
AECOM REVIEW DRFT CHK AECOM FILE NAME: 60189122-01-C-104-RDX.dwg Saved By: locosteg



ADDRESS	NATURE OF SERVICE	SIZE	MATERIAL	DISTANCE SC TO PROPERTY	POSITION OF SC (curb stop)	POSITION OF CC (corp)	COMMENTS:
96 WOODLAWN	RESIDENTIAL	3/4 in (19 mm)	COPPER		Long: (2.1 m) W of EL BUILDING Short: of SC	Long: of OPP Short: of SC	
97 WOODLAWN	RESIDENTIAL	3/4 in (19 mm)	COPPER		Long: (2.7 m) W of EL BUILDING Short: of SC	Long: of Short: of	
100 WOODLAWN	RESIDENTIAL	3/4 in (19 mm)	COPPER		Long: (3.0 m) E of WL BUILDING Short: of SC	Long: of Short: of	
102 WOODLAWN	RESIDENTIAL	3/4 in (19 mm)	COPPER		Long: (3.8 m) E of WL BUILDING Short: (0.8 m) W of SC	Long: of Short: of	

**WARNING**  
IF POWER EQUIPMENT OR EXPLOSIVES ARE TO BE USED FOR EXCAVATION ON THIS PROJECT, THE CONTRACTOR MUST NOTIFY THE GAS COMPANY OF THE PROPOSED LOCATION OF EXCAVATION. TAKE PRECAUTION TO AVOID DAMAGE TO GAS COMPANY INSTALLATIONS. SEE PROVINCIAL REGULATION 140/92 FOR DETAILS

- CONSTRUCTION NOTES:**
- EXPOSE WATERMAIN CONNECTIONS AND CONFIRM INVERTS PRIOR TO CONSTRUCTION
  - INSTALL WATERMAIN BY TRENCHLESS METHODS.
  - ALL MATERIALS SHALL CONFORM TO THE CITY OF WINNIPEG STANDARD CONSTRUCTION SPECIFICATIONS.
  - MINIMUM COVER TO TOP OF PROPOSED WATERMAIN SHALL BE 2.5m FROM STREET CENTERLINE.
  - INSTALL ALL HYDRANTS WITH FLANGE ELEVATION 50mm TO 150mm ABOVE FINISHED GRADE.
  - REPLACE ALL EXISTING LEAD SERVICES FROM THE PROPOSED WATERMAIN TO PROPERTY LINE.
  - NOTIFY ALL AFFECTED RESIDENTS AND BUSINESSES 24 HOURS IN ADVANCE OF ANY WATER SHUTDOWN OR DISRUPTION OF SERVICE.
  - LOCATION OF WATER SERVICES SHOWN ON DRAWINGS ARE APPROXIMATE. THE CONTRACTOR SHALL FIELD LOCATE ALL WATER SERVICES PRIOR TO CONSTRUCTION.
  - BACKFILL UNDER OR WITHIN 1.0m OF PAVEMENTS, INCLUDING SIDEWALKS SHALL BE CLASS 3 BACKFILL EXCEPT AS NOTED. BACKFILL IN BOULEVARDS SHALL BE CLASS 5 BACKFILL.



**METRIC**  
WHOLE NUMBERS INDICATE MILLIMETRES  
DECIMALIZED NUMBERS INDICATE METRES

**AECOM**  
Certificate of Authorization  
AECOM Canada Ltd.  
No. 4671 Date: APRIL 7, 2011

BID OPPORTUNITY NO. 260-2011

LEGEND - PLAN	LEGEND - PROFILE
150 WM WATERMAIN	150 WM WATERMAIN
HYDRANT VALVE	HYDRANT VALVE
300 LDS LAND DRAINAGE SEWER	300 LDS LAND DRAINAGE SEWER
250 WWS WASTE WATER SEWER	250 WWS WASTE WATER SEWER
MANHOLE	MANHOLE
CATCH BASIN	CATCH BASIN
CURB INLET	CURB INLET
CULVERT	CULVERT
PIPE ABANDONMENTS	PIPE ABANDONMENTS
SURVEY BAR	SURVEY BAR
EXISTING	NEW

**LOCATION APPROVED UNDERGROUND STRUCTURES**

DATE COMMITTEE

NOTE: LOCATION OF UNDERGROUND STRUCTURES AS SHOWN ARE BASED ON THE BEST INFORMATION AVAILABLE. BUT NO GUARANTEE IS GIVEN THAT ALL EXISTING UTILITIES ARE SHOWN OR THAT THE GIVEN LOCATIONS ARE EXACT. CONFIRMATION OF EXISTENCE AND EXACT LOCATION OF ALL SERVICES MUST BE OBTAINED FROM THE INDIVIDUAL UTILITIES BEFORE PROCEEDING WITH CONSTRUCTION.

NO.	REVISIONS	DATE	BY
0	ISSUED FOR TENDER	11/04/06	GDL
1	ISSUED FOR REVIEW	11/03/22	JP

DESIGNED BY	CHECKED BY	APPROVED BY	DATE
GSK	FMI	CCM	2011/04/07
JP			

**AECOM**

PROFESSIONAL'S SEAL  
PROVINCE OF MANITOBA  
ORIGINAL SIGNED BY  
**K.W. FITCHETT**  
APRIL 7, 2011  
REGISTERED PROFESSIONAL ENGINEER

CONSULTANT DRAWING NO.  
60189122-01-C-104-RDX.dwg

**THE CITY OF WINNIPEG**  
WATER AND WASTE DEPARTMENT

**2011 WATERMAIN RENEWALS CONTRACT 6**

WOODLAWN AVENUE  
MINNETONKA STREET TO STATION 0+220

SHEET 4 OF 10  
CITY DRAWING NUMBER  
**D-12339**

REV 0