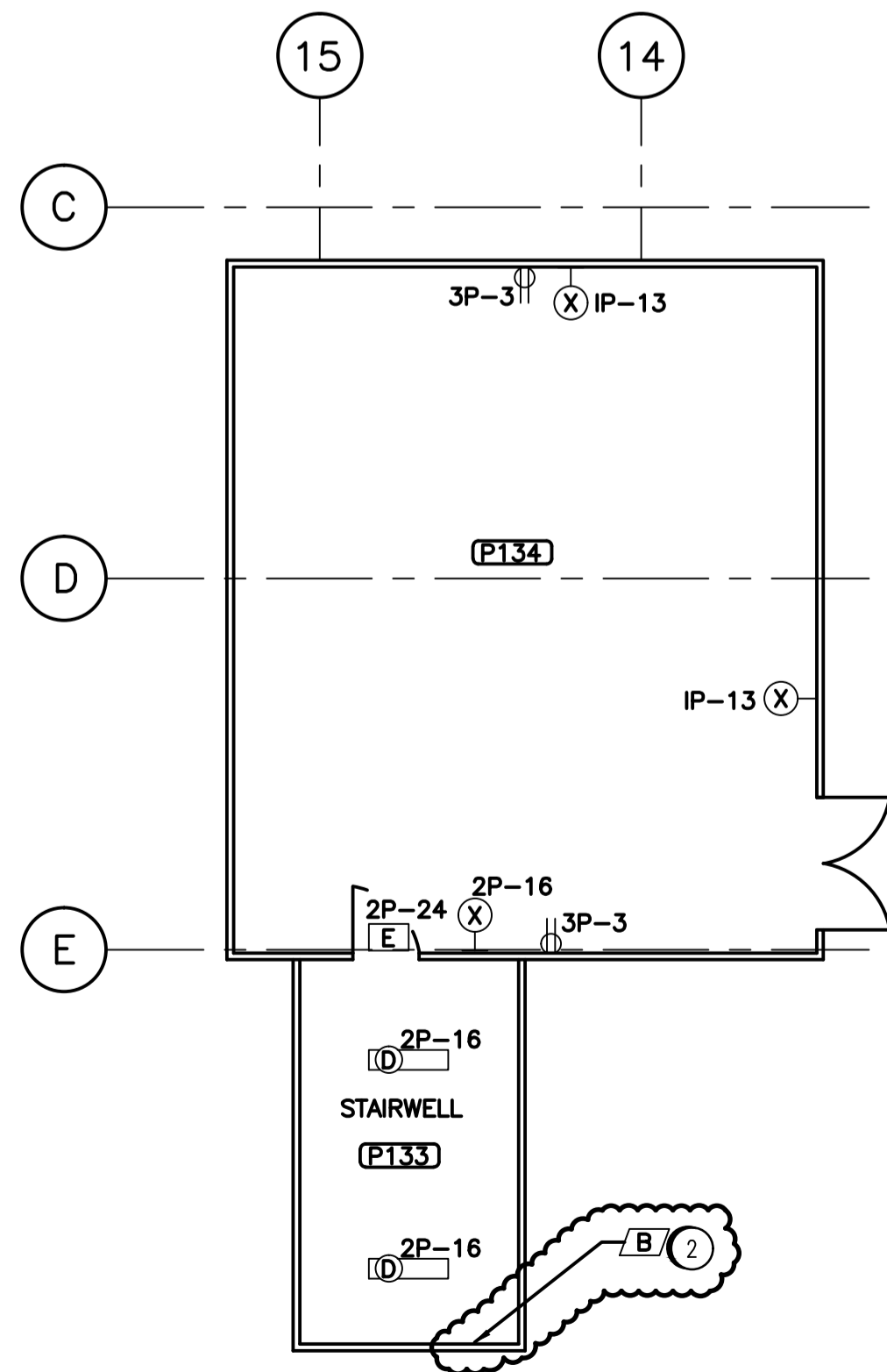


PLAN ELEV. 234.390 M



PLAN ELEV. 239.635 M

NOTES

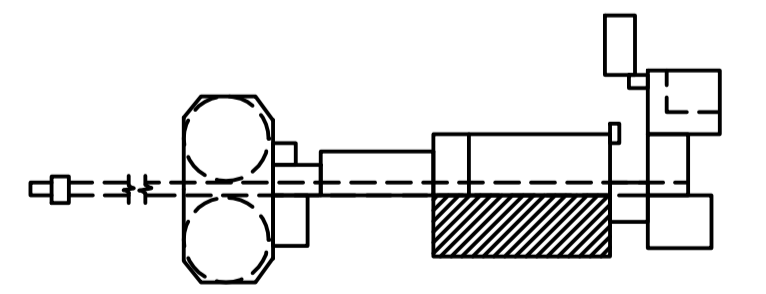
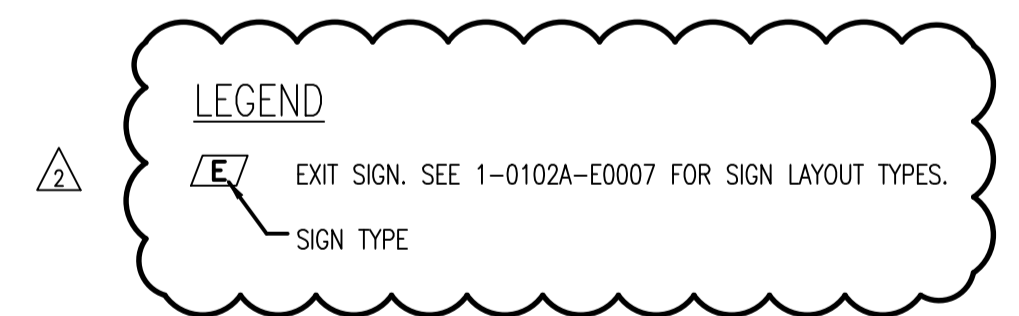
1. WELDING RECEPTACLES ARE FED FROM MCC'S IN ELECTRICAL ROOM No.P102
2. 3/4" CONDUIT FROM 4 LOUDSPEAKER HORN (X) LOCATIONS TO CABLE TRAY RUNNING EAST-WEST IN CLARIFIER #2 SOUTH GALLERY.

CONSTRUCTION NOTES	
1	INSTALL EXIT SIGN ON SOUTH WALL AS SHOWN.
2	INSTALL 'RUNNING PERSON' EXIT SIGN ON WALL.
3	INSTALL "NOT AN EXIT" SIGN ON THE STAIRWELL SIDE OF THE DOOR.

REFER TO DRAWING SEP-278 FOR FIXTURE SCHEDULE.

B.M. ELEV.		MACLAREN ENGINEERS INC. WARDROP ENGINEERING INC.	
		ENGINEERING CONSULTANTS	
		DESIGNED BY R. TIBOR	CHECKED BY
		DRAWN BY B.C. TIANGSING / CAD	APPROVED BY
		HOR. SCALE: VERTICAL: 1:100	RELEASED FOR CONSTRUCTION:
2	ADDED ESSENTIAL LIGHTING AND EXIT SIGNS	011/03/14	T.M.C.
1	AS CONSTRUCTED	05/91	B.T.
NO.	REVISIONS	DATE	BY
		DATE	89-01-11

SNC-LAVALIN INC. 148 Nelson Park Way Winnipeg, Manitoba Canada R3P 0X7	
DESIGNED BY T. CHURCH	APPROVED BY C. REIMER
CHECKED BY C. REIMER	DATE: 2011/03/11
PROJECT No. 112577	SUBJECT 0106
SUBJECT 47 DD	SERIAL 2402
REV. 2	



KEY PLAN
N.T.S.

THE CITY OF WINNIPEG
WORKS AND OPERATIONS DIVISION
WATERWORKS, WASTE & DISPOSAL DEPARTMENT

SOUTH END WATER POLLUTION CONTROL CENTRE
CITY DRAWING NUMBER

PRIMARY CLARIFIER EXPANSION - ELECTRICAL
NEW CLARIFIER-EL.234.390 M
& EL.239.635 M
ELECTRICAL - LIGHTING

SHEET OF
SEP-279

ORIGINAL DRAWING SEALED BY:
T. M. CHURCH
SNC-LAVALIN
2011/03/25
REV. 02
CHANGES ONLY

CONSULTANT DRAWING NO.
870012-01-16-E105