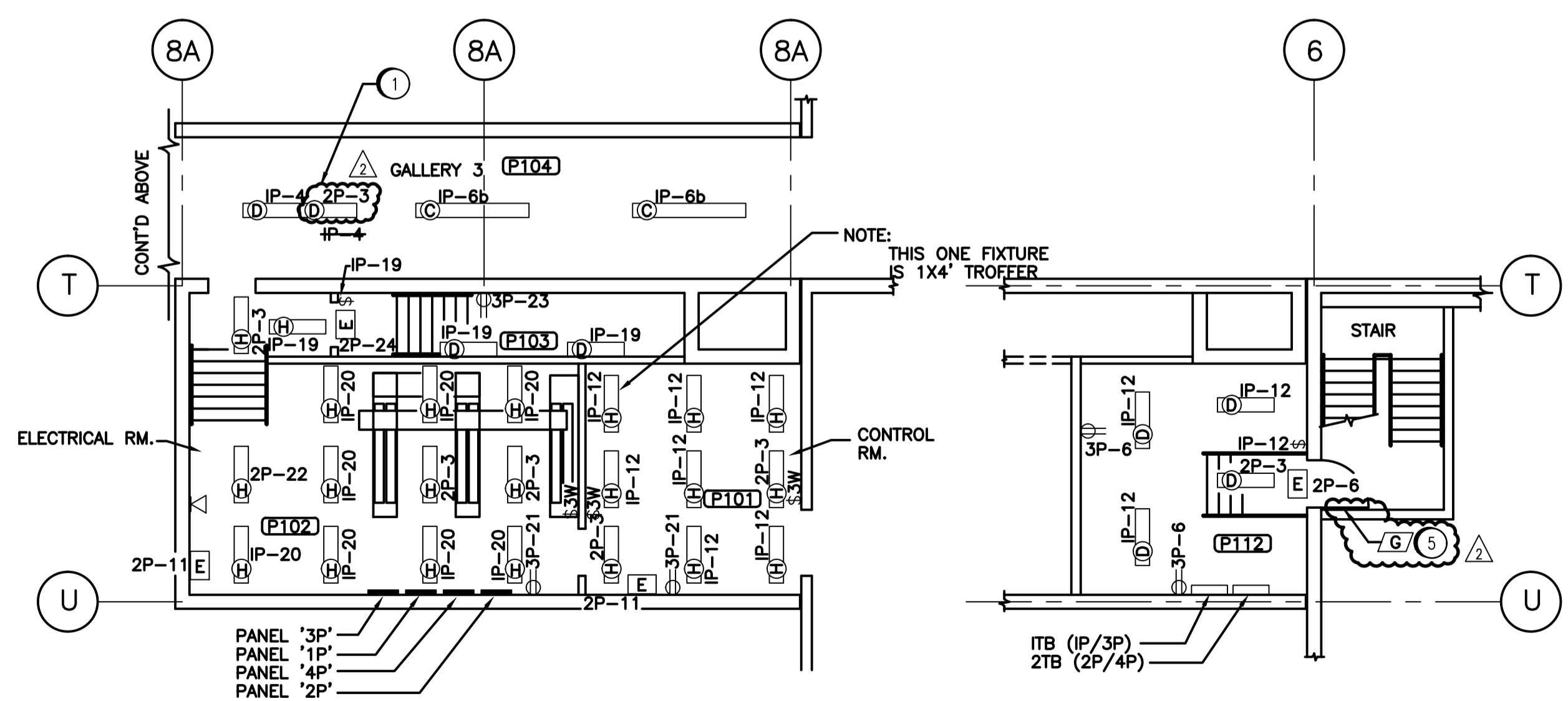


PLAN ELEV. 229 M



PLAN ELEV. 227.38 M

MECHANICAL ROOM  
PLAN ELEV. 230.12 M

DESIGNATION	DESCRIPTION & TYPE	LOCATION	MOUNTING METHOD	MOUNTING HEIGHT TO UNDERSIDE OF FIXTURE
(A)	150W HPS, 347V BALLAST C/W 250W QUARTZ LAMP	WALKWAYS	PENDANT	4M IN BUILDING
(B)	SAME AS 'A' BUT WITHOUT QUARTZ LAMP	WALKWAYS	PENDANT	4M IN BUILDING
(D)	2 X 40W, 347V BALLAST FLUORESCENT ENCLOSED FIXTURE	STAIRWELLS GALLERIES PENTHOUSE	SURFACE PENDANT PENDANT	--- 3.5M 3.5M
(E)	EXIT LIGHT			
(E) H2	CLASS 1, ZONE 2 RATED EXIT LIGHT 5W, 347V			
(K)	5W, 347V EXIT LIGHT DOUBLE FACED, CEILING MOUNTED			
(K)	5W, 347V EXIT LIGHT DOUBLE FACED, END MOUNTED			
(K)	5W, 347V EXIT LIGHT, WALL MOUNTED			
(F)	70W, 347V, HPS WALLPACK FIXTURE C/W PHOTOCCELL	OUTSIDE ABOVE THE DOORS	WALL	
(G)	100W HPS, 347V BALLAST WALLPACK	FAN ROOM	WALL	3M
(H)	2 X 40W, 347V BALLAST 2 X 4' TROFFER	ELECTRICAL ROOM	T-BAR CEILING	
(C)	2 X 75W, 347V BALLAST FLUORESCENT ENCLOSED FIXTURE	GALLERIES	PENDANT	3.5M

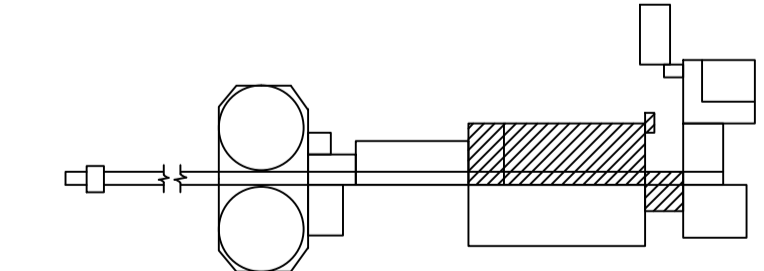
**LEGEND**

(E) EXIT SIGN. SEE 1-0102A-E0007 FOR SIGN LAYOUT TYPES.

(K) SIGN TYPE

(D) DOOR HOLD OPEN DEVICE

- CONSTRUCTION NOTES**
- REWIRE EXISTING FIXTURES IN GALLERY 3 AS SHOWN.
  - INSTALL EXIT SIGNS IN GALLERY 3 AS SHOWN.
  - REPLACE EXISTING EXIT SIGNS WITH END MOUNTED, DOUBLE FACED SIGNS.
  - INSTALL 'RUNNING PERSON' EXIT SIGN ON WALL.
  - INSTALL 'NOT AN EXIT' SIGN ON THE STAIRWELL SIDE OF THE DOOR.



KEY PLAN  
N.T.S.

SNC-LAVALIN INC. 148 Nelson Park Way Winnipeg, Manitoba Canada R3P 0X7	
DESIGNED BY T. CHURCH	APPROVED BY C. REMER
CHECKED BY C. REMER	DATE 2011/03/11
PROJECT No. 112577	SUBJECT 0106 47 DD 2401 2

B.M. ELEV.	MACLAREN ENGINEERS INC. WARDROP ENGINEERING INC.
	ENGINEERING CONSULTANTS
	DESIGNED BY R. TIBOR
	CHECKED BY
	DRAWN BY B.C. TIANGSING / CAD
	APPROVED BY
	RELEASED FOR CONSTRUCTION:
2 ADDED ESSENTIAL LIGHTING AND EXIT SIGNS	011/03/11 T.M.C.
1 AS CONSTRUCTED	05/91 B.T.
NO. REVISIONS	DATE BY DATE
	88-12-20

ORIGINAL DRAWING SEALED BY:  
T. M. CHURCH  
SNC-LAVALIN  
2011/03/25  
REV. 02  
CHANGES ONLY

CONSULTANT DRAWING NO.  
870012-01-16-E104

**THE CITY OF WINNIPEG**  
WORKS AND OPERATIONS DIVISION  
WATERWORKS, WASTE & DISPOSAL DEPARTMENT

SOUTH END WATER POLLUTION CONTROL CENTRE

PRIMARY CLARIFIER EXPANSION - ELECTRICAL  
EXISTING CLARIFIERS-EL.227.38 M  
EL.229 M & 230.12 M  
ELECTRICAL - LIGHTING

CITY DRAWING NUMBER  
SEP-278