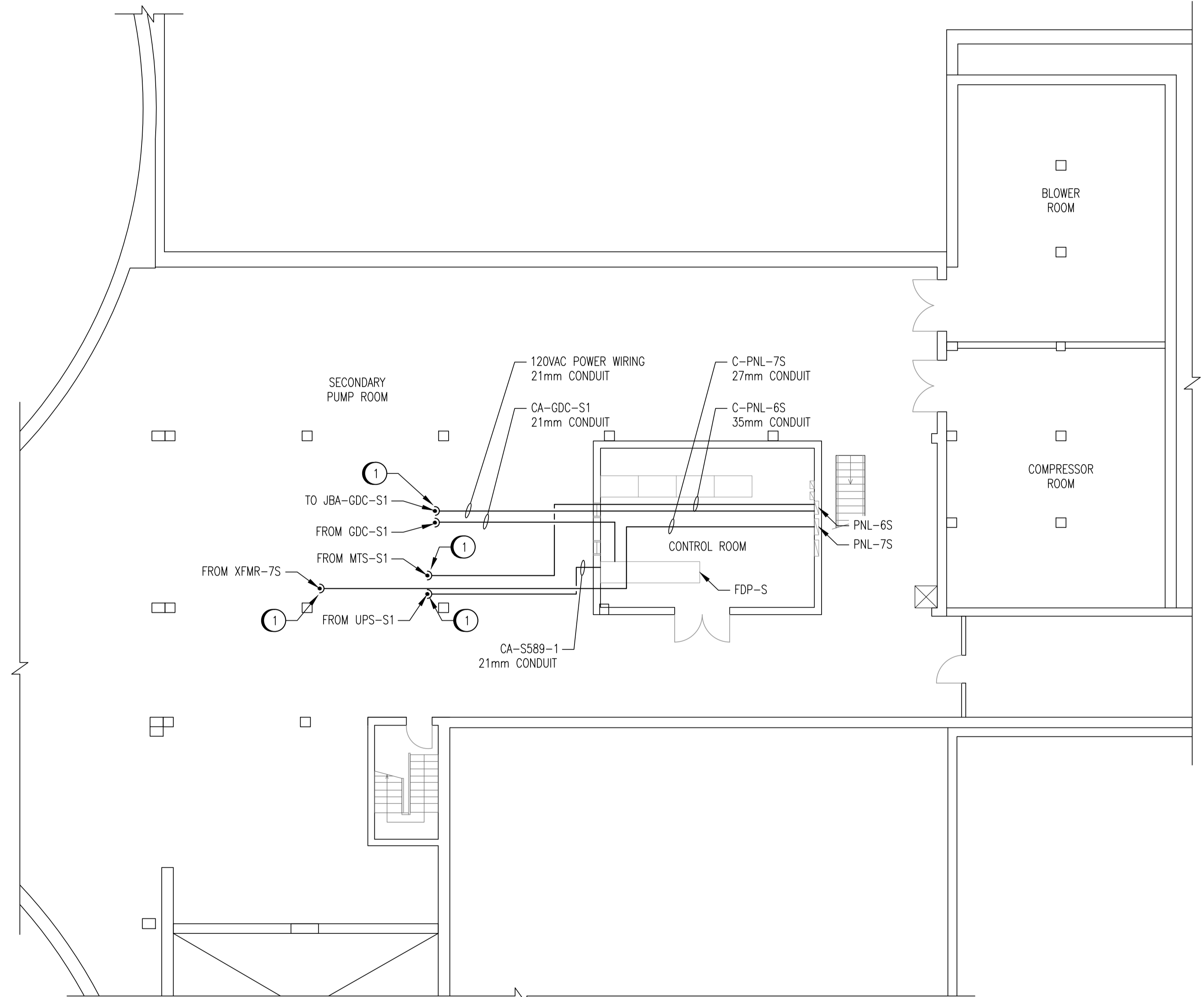
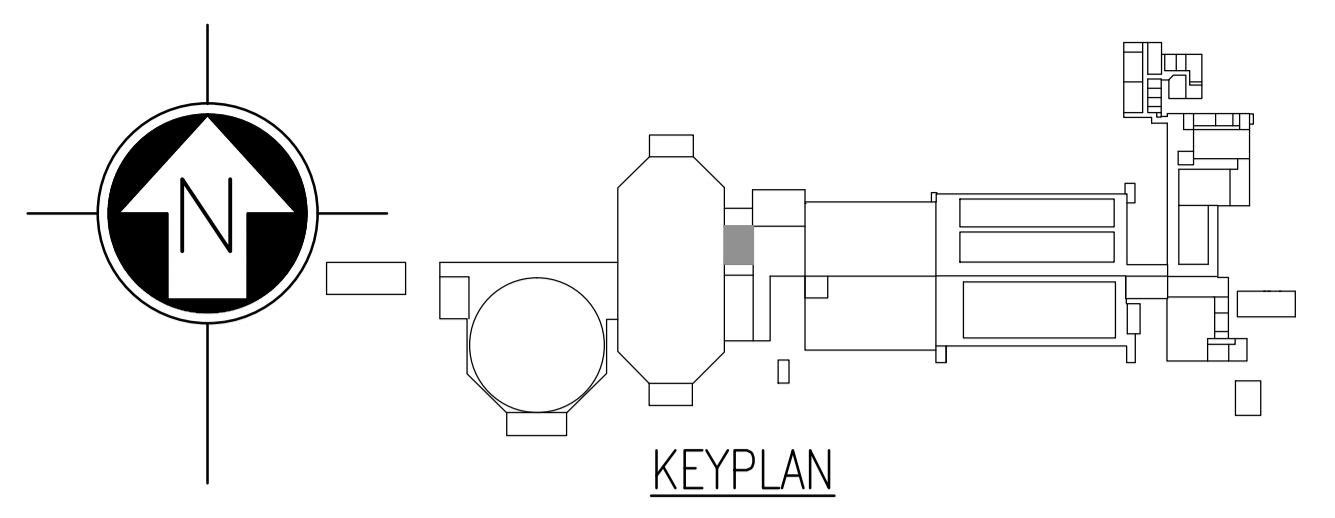


MAIN LEVEL
 SCALE: 1 : 100



LOWER LEVEL
 SCALE: 1 : 100



NOTES:

1. THE LOCATION OF THE CONDUITS AND CABLE IS APPROXIMATE. INSPECT THE ROUTE AND INSTALL AS REQUIRED. REQUEST APPROVAL PRIOR TO MAKING MAJOR ROUTE MODIFICATIONS.
2. NOT ALL THE CONDUITS AND CABLES ARE SHOWN.

CONSTRUCTION NOTES

1. INSTALL PENETRATIONS AS PER DETAIL 1 OF 1-0102A-E0008. FIELD LOCATE OPENINGS CLEAR OF MIXED LIQUOR CHANNELS THAT RUN UNDER SECONDARY LAB.



NO.	REVISIONS	DATE	DESIGN	CHECK
00	ISSUED FOR TENDER, BID OPP. 209-2011	2011/03/11	TMC	CJR

<p>SNC-LAVALIN INC. 148 Nature Park Way Winnipeg, MB, Canada R3P 0X7 204-798-8080</p>	
DESIGNED BY: T. CHURCH	CHECKED BY: C. REIMER
DRAWN BY: S. FUNK	APPROVED BY: C. REIMER
SCALE: 1:100	RELEASED FOR CONSTRUCTION BY: N. HARRINGTON
DATE: 2010/11/30	DATE: 2011/03/11
CONSULTANT NO.: 112577-0106-47DD-0605	

ENGINEER'S SEAL

ORIGINAL DRAWING
 SEALED BY:
 T. M. CHURCH
 SNC-LAVALIN
 MEMBER # 32682
 2011/03/25
 REV. 00

THE CITY OF WINNIPEG
 WATER AND WASTE DEPARTMENT

SOUTH END WATER POLLUTION CONTROL CENTRE
 ESSENTIAL SYSTEMS UPGRADES
 CONDUIT AND CABLE ROUTING
 SECONDARY CLARIFIER

CITY DRAWING NUMBER	SHEET	REV.	SIZE
1-0102S-E0023	001	00	A1